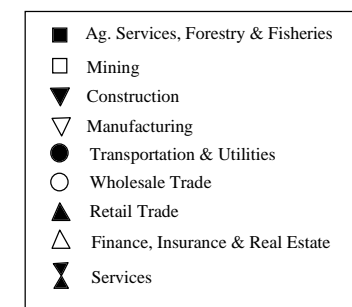
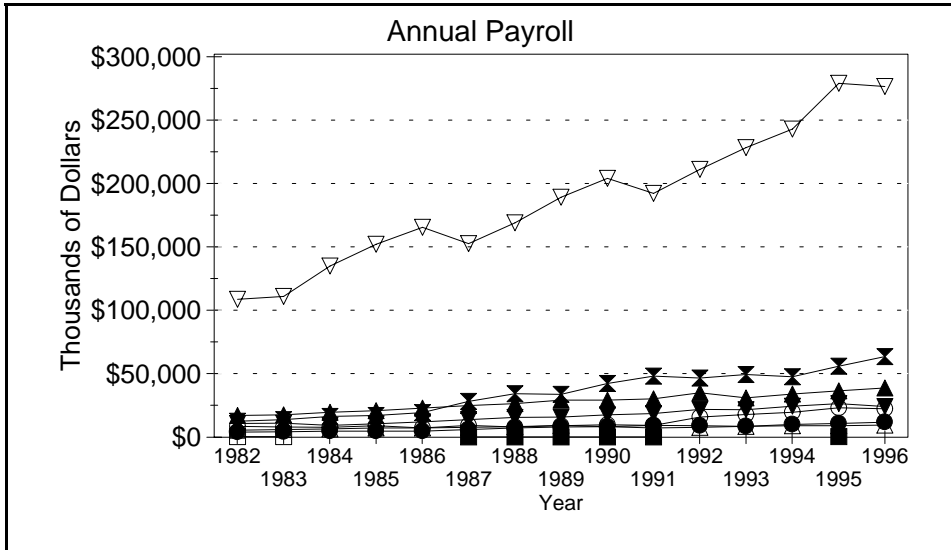
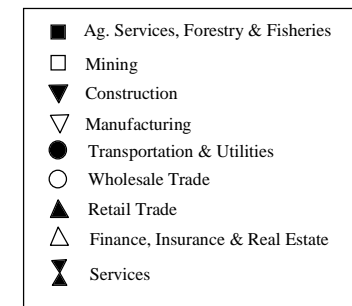
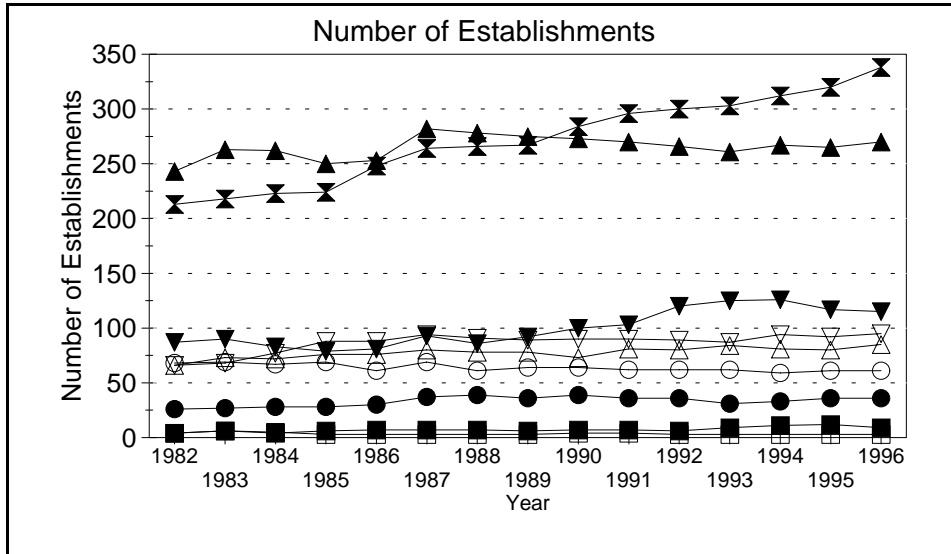
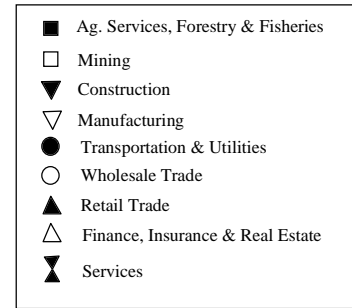
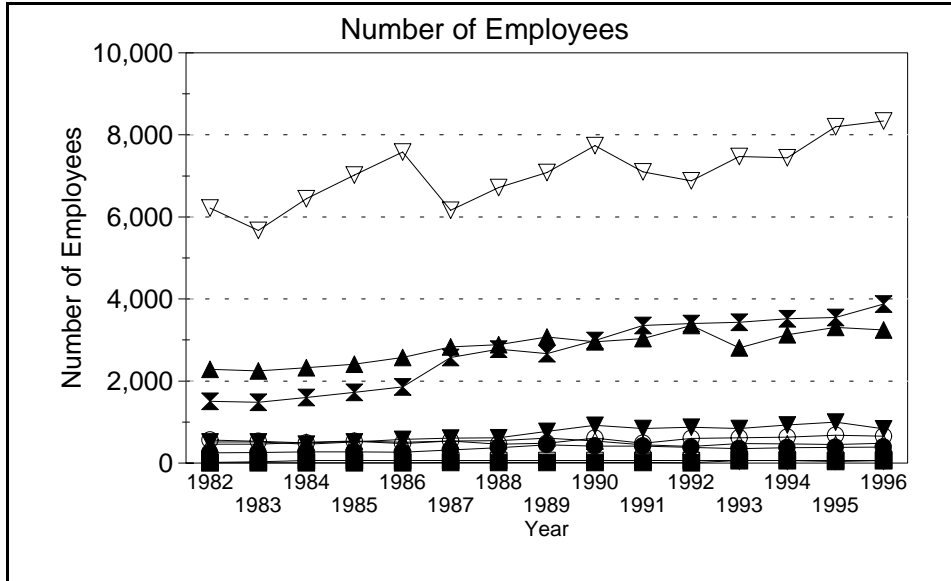


Business Statistics



Source: County Business Patterns, Ohio. These data are derived from all wage and salary employment covered by FICA which includes private non-farm employers and non-profit organizations, but does not include farms and the self employed.

Business Statistics

Number of Employees

Year	Ag. Services, Forestry, Fisheries*	Mining	Construction	Manufacturing	Transportation & Utilities	Wholesale Trade	Retail Trade	Finance, Insurance, Real Estate	Services	Not Classifiable	Total
1982	A	18	514	6,220	251	560	2,286	457	1,509	A	11,830
1983	A	31	513	5,671	260	534	2,249	463	1,482	B	11,248
1984	A	B	457	6,442	275	495	2,323	510	1,599	70	12,215
1985	A	B	513	7,020	271	532	2,407	536	1,721	135	13,176
1986	A	B	578	7,584	265	476	2,576	506	1,860	70	13,955
1987	13	B	610	6,164	320	539	2,831	537	2,575	A	13,632
1988	17	B	614	6,713	377	459	2,886	543	2,775	B	14,502
1989	17	B	770	7,080	448	485	3,073	605	2,670	B	15,265
1990	15	B	917	7,737	415	605	2,957	539	2,984	B	16,236
1991	12	B	846	7,098	413	482	3,036	444	3,358	B	15,740
1992	A	B	876	6,881	384	597	3,353	405	3,402	21	15,954
1993	B	B	840	7,469	350	613	2,810	476	3,432	16	16,063
1994	B	B	930	7,438	376	634	3,129	470	3,516	8	16,561
1995	41	B	995	8,196	386	682	3,307	450	3,552	A	17,658
1996	B	B	834	8,338	389	656	3,247	480	3,874	A	17,876

Number of Establishments

Year	Ag. Services, Forestry, Fisheries*	Mining	Construction	Manufacturing	Transportation & Utilities	Wholesale Trade	Retail Trade	Finance, Insurance, Real Estate	Services	Not Classifiable	Total
1982	4	4	87	66	26	68	243	66	213	3	780
1983	6	6	90	68	27	69	263	73	218	29	849
1984	4	5	83	77	28	67	262	72	223	57	878
1985	6	3	79	88	28	69	250	76	224	76	899
1986	7	3	81	88	30	61	253	76	248	50	897
1987	7	3	93	94	37	69	282	80	264	14	943
1988	7	3	86	91	39	61	278	78	266	53	962
1989	6	3	92	89	36	64	275	78	267	59	969
1990	7	4	100	90	39	64	273	73	284	32	966
1991	7	4	103	90	36	62	270	81	296	24	973
1992	6	3	120	89	36	62	266	80	300	8	970
1993	9	3	125	87	31	62	261	84	303	13	978
1994	11	3	126	94	33	59	267	81	312	10	996
1995	12	3	117	92	36	61	265	80	320	15	1,001
1996	9	3	115	95	36	61	270	85	338	1	1,013

Annual Payroll (Thousands of Dollars)

Year	Ag. Services, Forestry, Fisheries*	Mining	Construction	Manufacturing	Transportation & Utilities	Wholesale Trade	Retail Trade	Finance, Insurance, Real Estate	Services	Not Classifiable	Total
1982	D	404	10,868	108,014	4,086	8,402	17,115	5,455	12,432	D	166,949
1983	D	461	11,123	110,156	4,155	7,981	17,596	5,981	13,695	D	171,807
1984	D	D	9,355	134,007	4,702	7,647	19,482	6,502	16,269	1,041	199,762
1985	D	D	10,651	151,167	4,815	8,987	20,864	7,165	17,091	1,140	222,559
1986	D	D	12,066	164,434	4,810	7,167	22,879	7,277	19,376	823	239,556
1987	203	D	13,779	151,615	6,060	9,344	24,693	7,655	28,120	D	242,248
1988	246	D	15,509	168,034	7,232	7,949	26,441	8,363	34,072	D	269,647
1989	266	D	15,909	188,077	8,143	9,100	29,005	9,335	33,487	D	295,439
1990	291	D	17,660	202,850	8,223	9,776	29,107	8,188	42,074	D	319,162
1991	267	D	18,667	190,981	9,385	9,363	30,059	7,254	47,968	D	315,058
1992	D	D	21,771	209,664	8,912	15,831	34,787	7,775	46,385	197	346,210
1993	D	D	21,493	226,711	8,412	17,792	30,893	8,642	49,001	146	363,981
1994	D	D	24,360	241,405	9,960	19,510	33,747	9,034	47,395	122	386,521
1995	617	D	26,375	277,227	10,797	23,129	36,380	8,945	55,566	D	439,871
1996	D	D	24,023	274,807	11,759	22,307	38,649	9,438	63,068	D	445,329

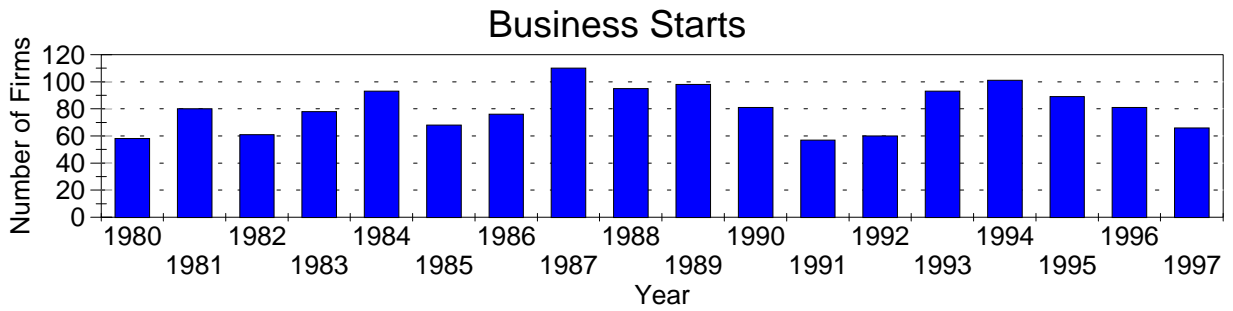
A=0-19, B=20-99, C=100-249, D=figures withheld, E=250-499,

F=500-999, G=1,000-2,499, H=2,500-4,999, I=5,000-9,999,

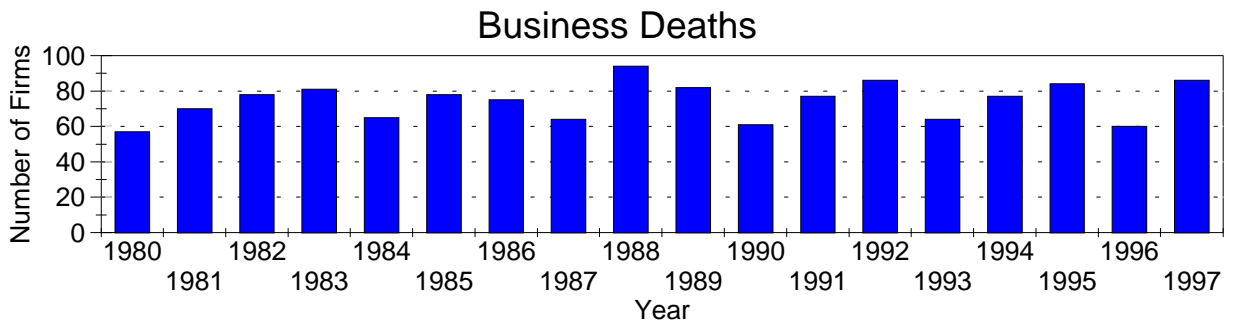
J=10,000-24,999, K=25,000-49,999, L=50,000-99,999, M=100,000 or more

*Ag. Services, Forestry & Fisheries include only non-farm businesses.

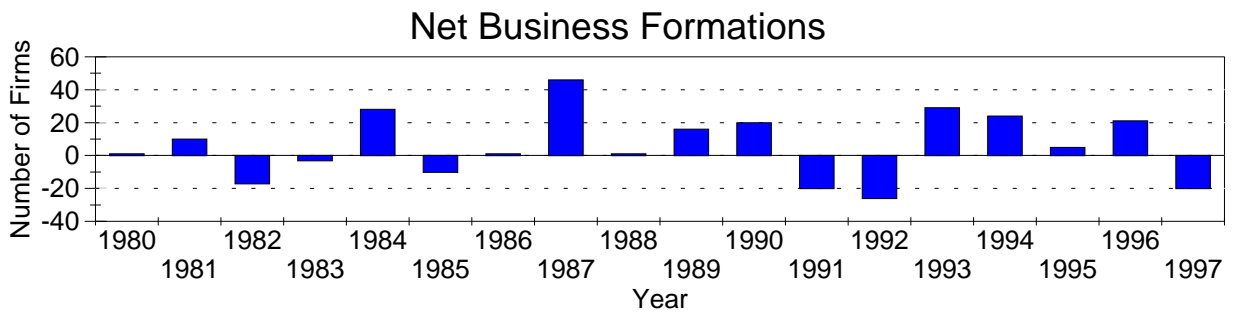
Business Statistics



Business starts and business deaths are determined from workers compensation records.



Business starts less business deaths equal net business formations.



Business Starts

Year	Number of Firms
1980	58
1981	80
1982	61
1983	78
1984	93
1985	68
1986	76
1987	110
1988	95
1989	98
1990	81
1991	57
1992	60
1993	93
1994	101
1995	89
1996	81
1997	66

Business Deaths

Year	Number of Firms
1980	57
1981	70
1982	78
1983	81
1984	65
1985	78
1986	75
1987	64
1988	94
1989	82
1990	61
1991	77
1992	86
1993	64
1994	77
1995	84
1996	60
1997	86

Net Business Formations

Year	Number of Firms
1980	1
1981	10
1982	-17
1983	-3
1984	28
1985	-10
1986	1
1987	46
1988	1
1989	16
1990	20
1991	-20
1992	-26
1993	29
1994	24
1995	5
1996	21
1997	-20

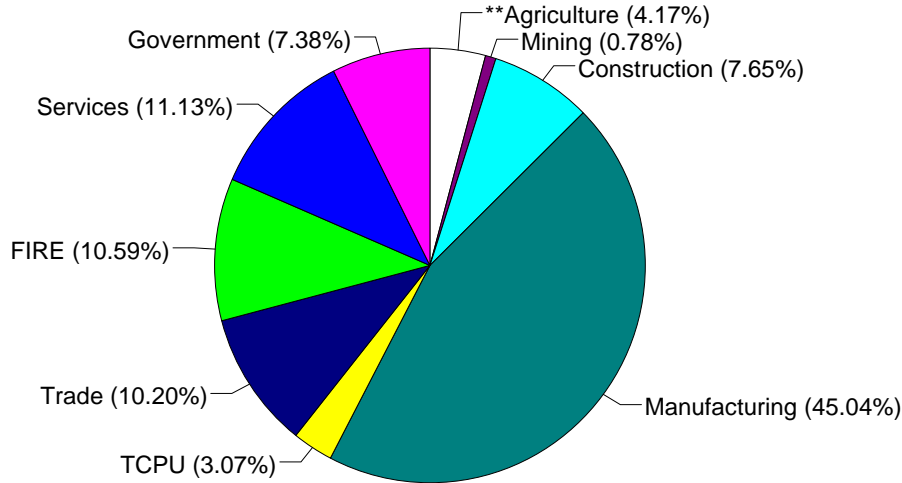
Source: Components of Business Change, Ohio Department of Development, Office of Strategic Research

Economic Structure

Total Value Added:
\$886.96 million.

Value Added by Sector (1993)*

Value Added is a broad measure of income that includes employee compensations, business profits, and returns to property, plant, and equipment.



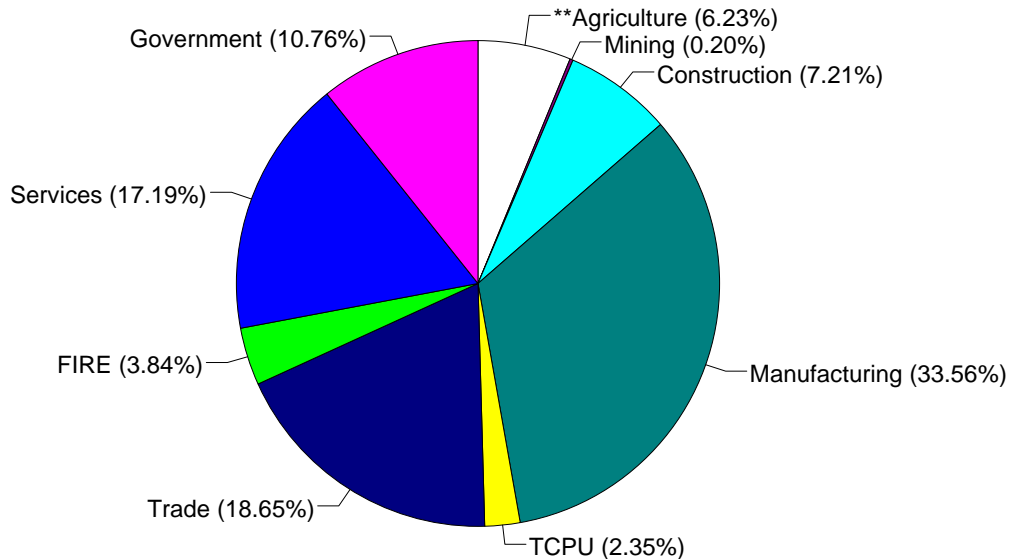
TCPU=Transportation, Communication, and Public Utilities.
FIRE=Finance, Insurance, and Real Estate.

*These estimates include many components not reported in other sources such as farms, self-employed, and small firms.

**Agriculture/Fishing/Forestry sector includes production agriculture (farm), agricultural services, forestry, and fishing enterprises.

Total Employment:
22,620 workers.

1993 Employment by Sector*



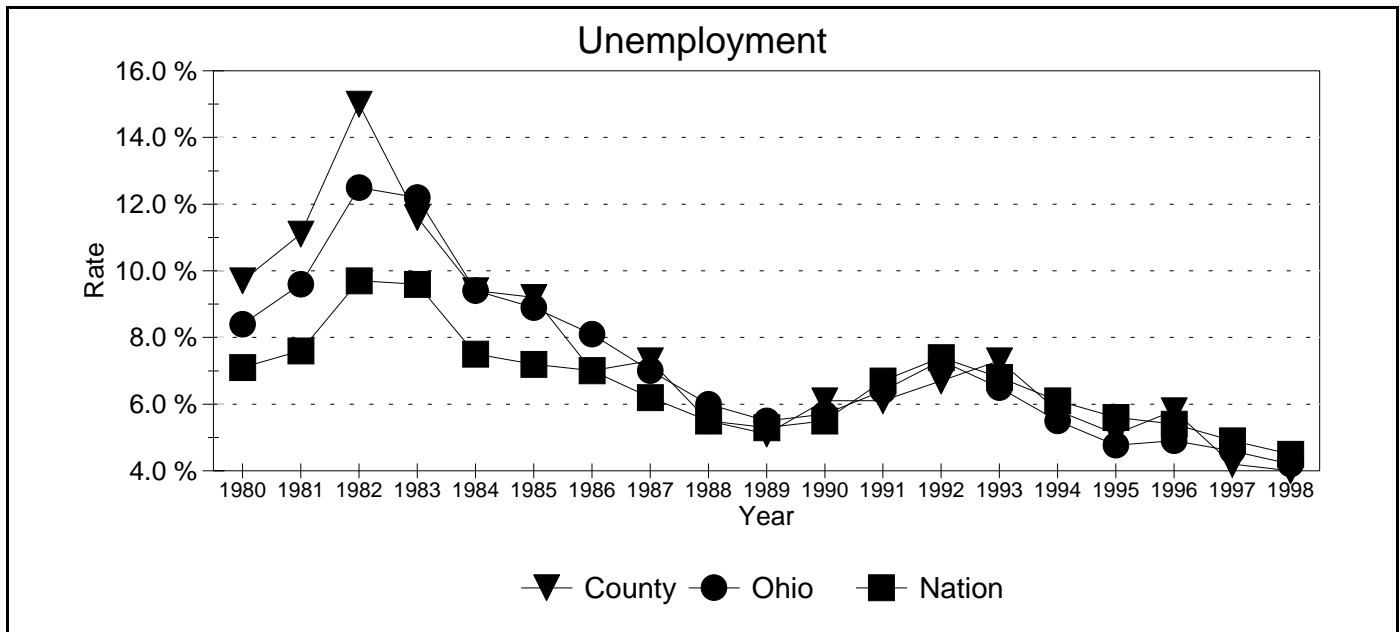
TCPU=Transportation, Communication, and Public Utilities.
FIRE=Finance, Insurance, and Real Estate.

*These estimates include many components not reported in other sources such as farms, self-employed, and small firms.

**Agriculture/Fishing/Forestry sector includes production agriculture (farm), agricultural services, forestry, and fishing enterprises.

Source: 1993 IMPLAN database, Minnesota Implan Group. IMPLAN is a non-survey regional input-output account generator originally developed by the U.S. Forest Service. These estimates provide a full picture of the county's economy.

Unemployment Statistics



Source: Bureau of Labor Statistics

Commuting Statistics

Residents retained in Auglaize County: 13,153.

Residents of Neighboring Counties Working in Auglaize County, 1990

County of Residence	Number of Incommuters
Mercer	2,262
Allen	1,206
Shelby	1,031
Darke	246
Miami	95
Logan	94
Van Wert	79

Residents of Auglaize County Working in Neighboring Counties, 1990

County of Work	Number of Outcommuters
Allen	3,621
Shelby	1,707
Mercer	1,053
Logan	198
Miami	134
Darke	89
Montgomery	80

Source: U.S. Census Bureau, 1990 Census Summary Tape File S-5.