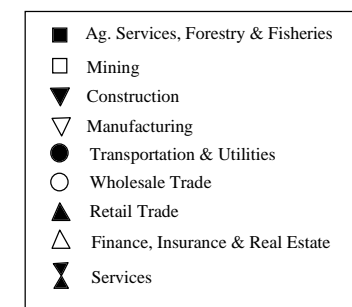
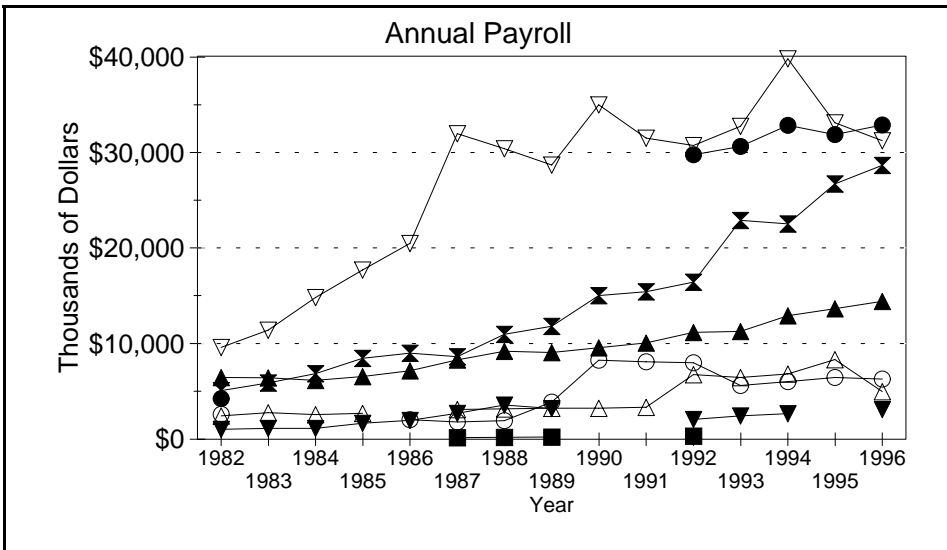
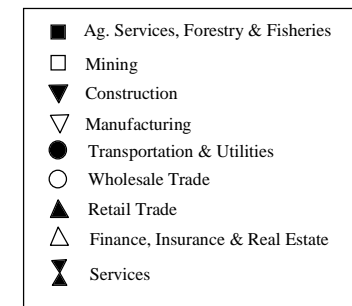
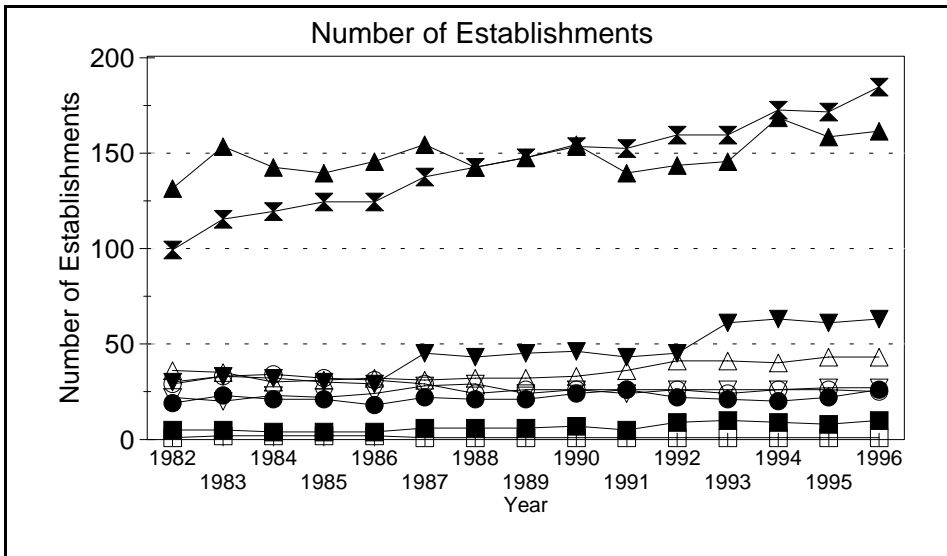
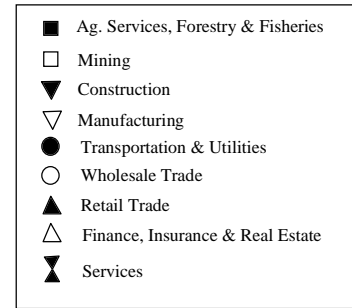
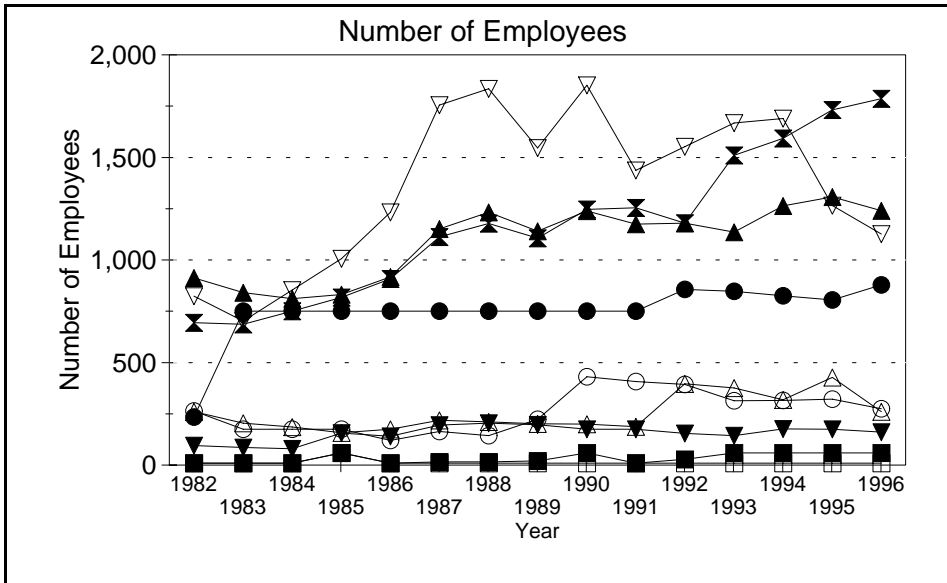


Business Statistics



Source: County Business Patterns, Ohio. These data are derived from all wage and salary employment covered by FICA which includes private non-farm employers and non-profit organizations, but does not include farms and the self employed.

Business Statistics

Number of Employees

Year	Ag. Services, Forestry, Fisheries*	Mining	Construction	Manufacturing	Transportation & Utilities	Wholesale Trade	Retail Trade	Finance, Insurance, Real Estate	Services	Not Classifiable	Total
1982	A	A	95	824	234	264	913	261	694	8	3,314
1983	A	A	86	702	F	C	841	204	686	22	3,747
1984	A	A	80	854	F	C	811	185	750	89	3,871
1985	B	B	156	1,007	F	C	832	157	818	140	4,217
1986	A	A	141	1,232	F	120	917	C	908	79	4,479
1987	16	A	195	1,755	F	164	1,152	219	1,113	A	5,501
1988	15	A	205	1,834	F	144	1,232	211	1,178	35	5,741
1989	20	A	196	1,546	F	223	1,141	201	1,106	88	5,390
1990	B	A	C	1,852	F	430	1,239	199	1,246	A	6,085
1991	A	A	C	1,437	F	407	1,175	187	1,254	7	5,484
1992	28	A	154	1,552	856	393	1,180	396	1,179	A	5,741
1993	B	A	143	1,667	847	314	1,136	376	1,510	26	6,046
1994	B	A	177	1,690	826	315	1,263	318	1,593	3	6,214
1995	B	A	C	1,265	805	321	1,307	428	1,732	3	6,037
1996	B	A	161	1,127	879	274	1,241	260	1,786	A	5,752

Number of Establishments

Year	Ag. Services, Forestry, Fisheries*	Mining	Construction	Manufacturing	Transportation & Utilities	Wholesale Trade	Retail Trade	Finance, Insurance, Real Estate	Services	Not Classifiable	Total
1982	5	1	30	22	19	29	131	36	99	8	380
1983	5	2	33	20	23	33	153	35	115	24	443
1984	4	2	32	23	21	34	142	30	119	35	442
1985	4	2	30	22	21	32	139	31	124	49	454
1986	4	2	29	24	18	31	145	32	124	37	446
1987	6	1	45	28	22	29	154	31	137	6	459
1988	6	1	43	29	21	24	142	32	142	34	474
1989	6	1	45	24	21	26	147	32	147	34	483
1990	7	1	46	26	24	26	154	33	153	21	491
1991	5	1	43	24	26	26	139	36	152	15	467
1992	9	1	45	26	22	26	143	41	159	2	474
1993	10	1	61	26	21	24	145	41	159	7	495
1994	9	1	63	26	20	26	168	40	172	7	532
1995	8	1	61	27	22	26	158	43	171	8	525
1996	10	1	63	27	26	25	161	43	184	4	544

Annual Payroll (Thousands of Dollars)

Year	Ag. Services, Forestry, Fisheries*	Mining	Construction	Manufacturing	Transportation & Utilities	Wholesale Trade	Retail Trade	Finance, Insurance, Real Estate	Services	Not Classifiable	Total
1982	D	D	1,025	9,604	4,253	2,612	6,462	2,427	5,075	104	31,688
1983	D	D	1,133	11,381	D	D	6,426	2,788	5,888	204	54,064
1984	D	D	1,135	14,815	D	D	6,150	2,557	6,856	583	58,836
1985	D	D	1,659	17,677	D	D	6,551	2,703	8,445	928	65,101
1986	D	D	1,975	20,450	D	2,050	7,161	D	8,998	551	71,498
1987	179	D	2,722	31,905	D	1,821	8,271	3,109	8,610	D	83,632
1988	205	D	3,561	30,344	D	1,944	9,181	3,176	10,976	523	87,354
1989	249	D	3,210	28,633	D	3,887	9,043	3,239	11,782	914	89,305
1990	D	D	D	34,904	D	8,257	9,571	3,250	15,010	D	103,900
1991	D	D	D	31,446	D	8,071	10,042	3,343	15,394	151	101,069
1992	330	D	2,068	30,665	29,715	7,996	11,172	6,765	16,394	D	105,138
1993	D	D	2,449	32,678	30,566	5,629	11,267	6,453	22,870	50	112,297
1994	D	D	2,688	39,727	32,779	6,002	12,887	6,821	22,493	34	123,778
1995	D	D	D	33,037	31,815	6,443	13,631	8,322	26,668	61	122,874
1996	D	D	3,122	31,176	32,811	6,295	14,410	4,983	28,611	D	121,743

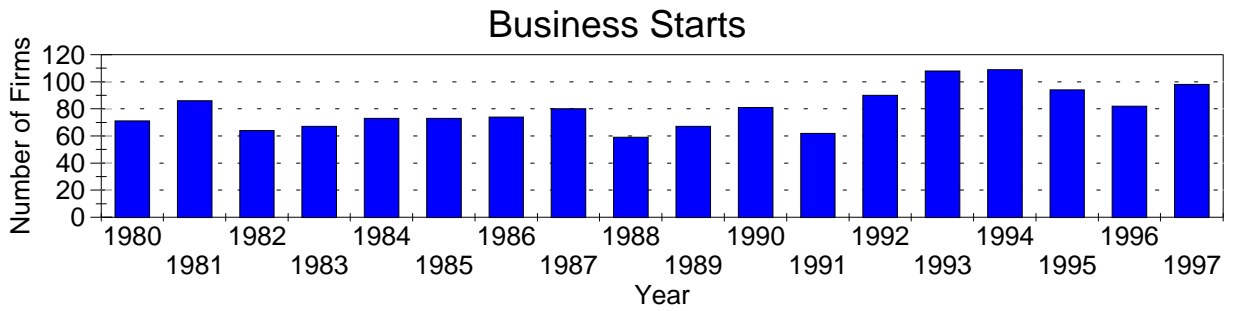
A=0-19, B=20-99, C=100-249, D=figures withheld, E=250-499,

F=500-999, G=1,000-2,499, H=2,500-4,999, I=5,000-9,999,

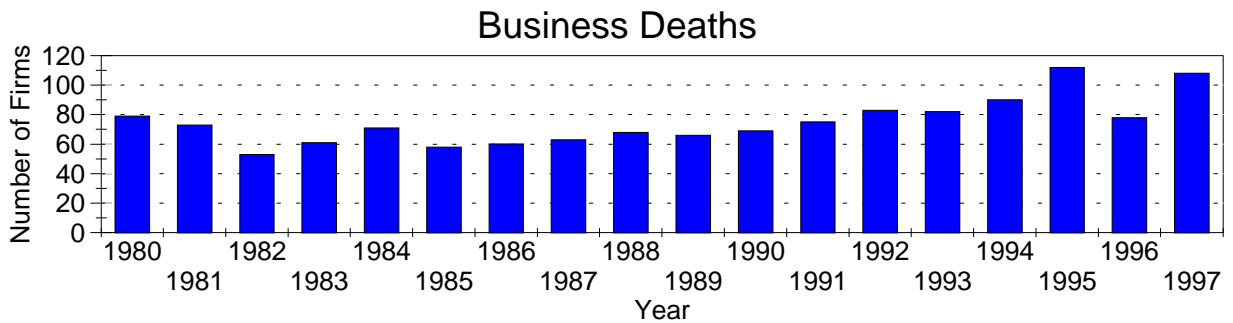
J=10,000-24,999, K=25,000-49,999, L=50,000-99,999, M=100,000 or more

*Ag. Services, Forestry & Fisheries include only non-farm businesses.

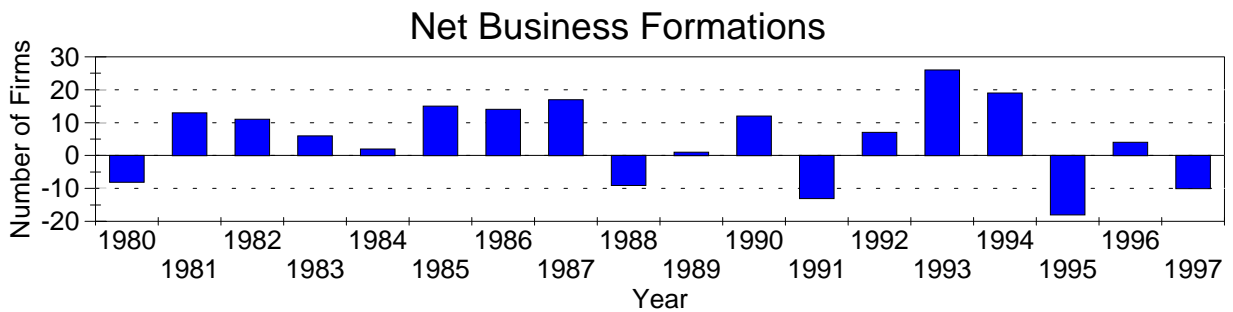
Business Statistics



Business starts and business deaths are determined from workers compensation records.



Business starts less business deaths equal net business formations.



Business Starts

Year	Number of Firms
1980	71
1981	86
1982	64
1983	67
1984	73
1985	73
1986	74
1987	80
1988	59
1989	67
1990	81
1991	62
1992	90
1993	108
1994	109
1995	94
1996	82
1997	98

Business Deaths

Year	Number of Firms
1980	79
1981	73
1982	53
1983	61
1984	71
1985	58
1986	60
1987	63
1988	68
1989	66
1990	69
1991	75
1992	83
1993	82
1994	90
1995	112
1996	78
1997	108

Net Business Formations

Year	Number of Firms
1980	-8
1981	13
1982	11
1983	6
1984	2
1985	15
1986	14
1987	17
1988	-9
1989	1
1990	12
1991	-13
1992	7
1993	26
1994	19
1995	-18
1996	4
1997	-10

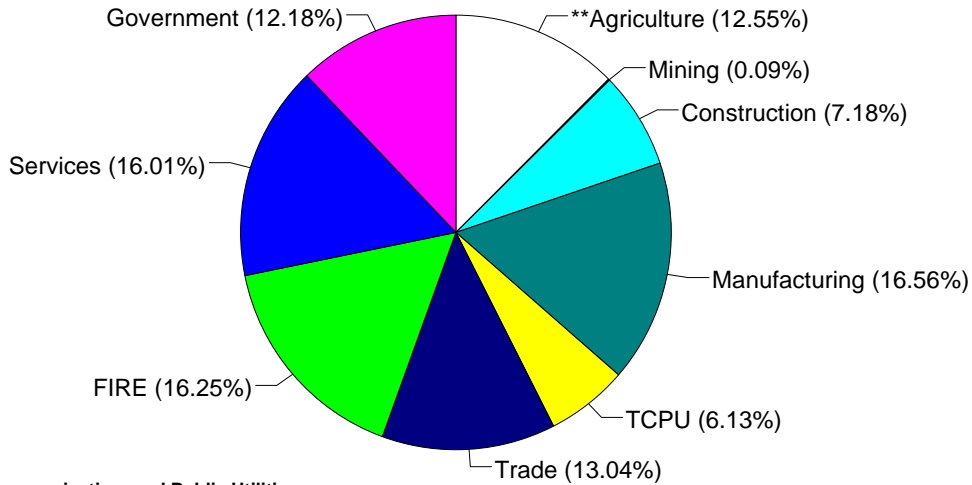
Source: Components of Business Change, Ohio Department of Development, Office of Strategic Research

Economic Structure

Total Value Added:
\$323.54 million.

Value Added by Sector (1993)*

Value Added is a broad measure of income that includes employee compensations, business profits, and returns to property, plant, and equipment.



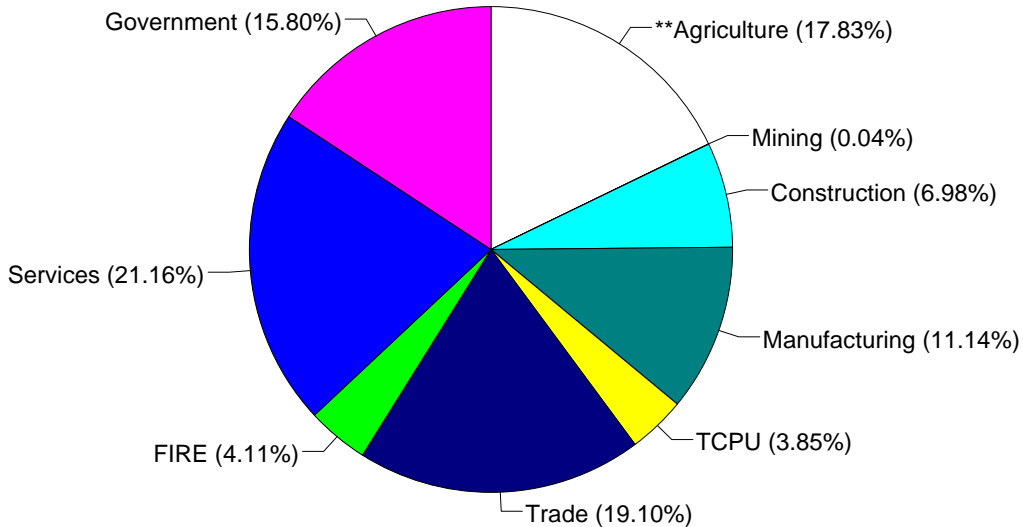
TCPU=Transportation, Communication, and Public Utilities.
FIRE=Finance, Insurance, and Real Estate.

*These estimates include many components not reported in other sources such as farms, self-employed, and small firms.

**Agriculture/Fishing/Forestry sector includes production agriculture (farm), agricultural services, forestry, and fishing enterprises.

Total Employment:
10,534 workers.

1993 Employment by Sector*



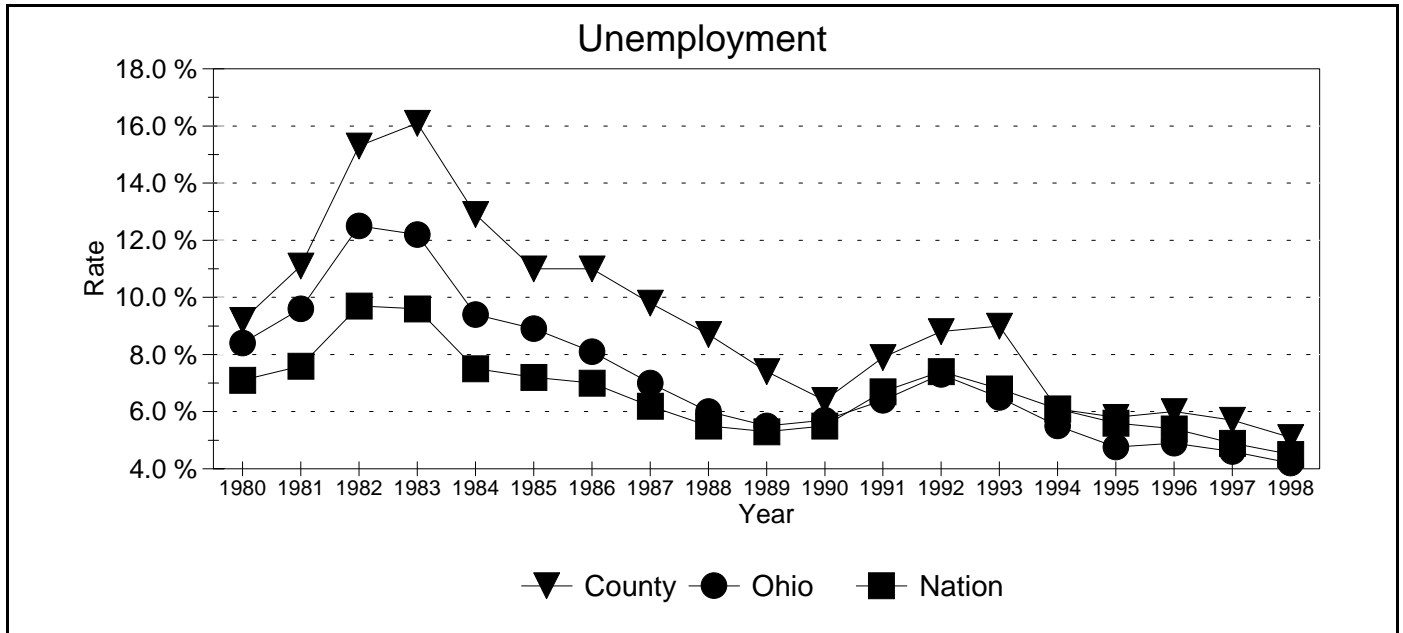
TCPU=Transportation, Communication, and Public Utilities.
FIRE=Finance, Insurance, and Real Estate.

*These estimates include many components not reported in other sources such as farms, self-employed, and small firms.

**Agriculture/Fishing/Forestry sector includes production agriculture (farm), agricultural services, forestry, and fishing enterprises.

Source: 1993 IMPLAN database, Minnesota Implan Group. IMPLAN is a non-survey regional input-output account generator originally developed by the U.S. Forest Service. These estimates provide a full picture of the county's economy.

Unemployment Statistics



Source: Bureau of Labor Statistics

Commuting Statistics

Residents retained in Brown County: 5,903.

Residents of Neighboring Counties Working in Brown County, 1990

County of Residence	Number of Incommuters
Adams	634
Clermont	514
Mason (KY)	442
Highland	354
Fleming (KY)	93
Hamilton	78
Lewis (KY)	62

Residents of Brown County Working in Neighboring Counties, 1990

County of Work	Number of Outcommuters
Clermont	3,436
Hamilton	3,365
Mason (KY)	585
Adams	377
Clinton	201
Butler	127
Highland	104

Source: U.S. Census Bureau, 1990 Census Summary Tape File S-5.