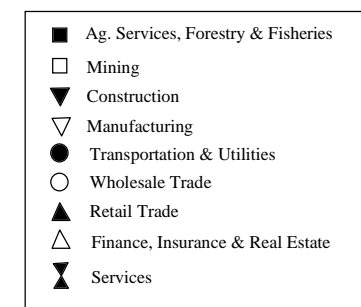
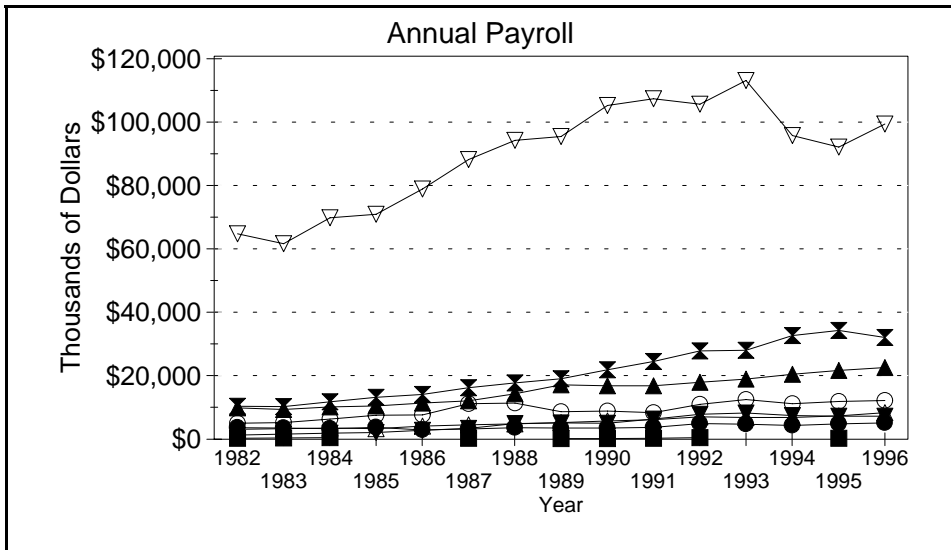
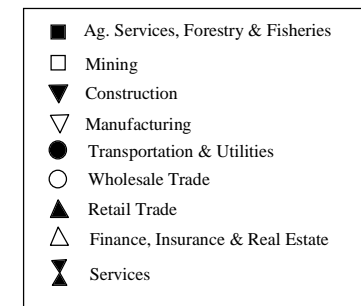
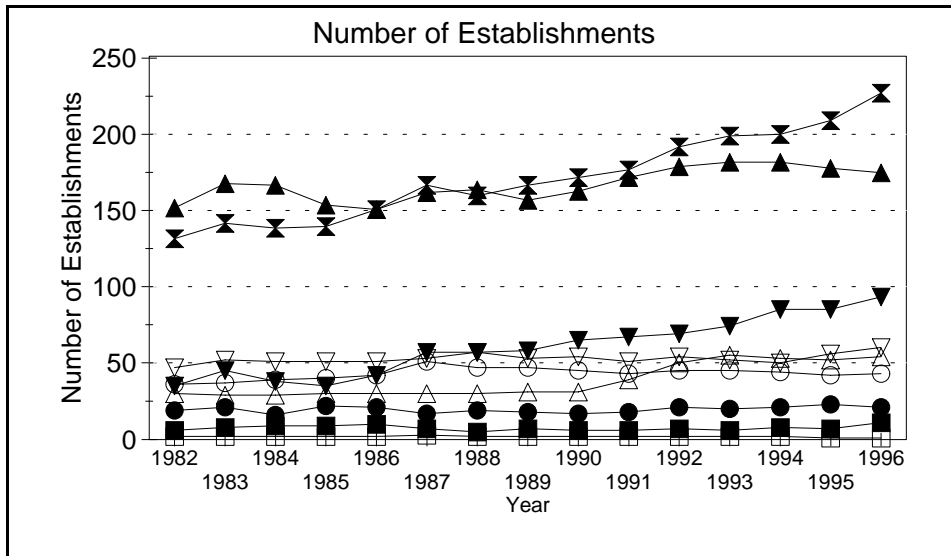
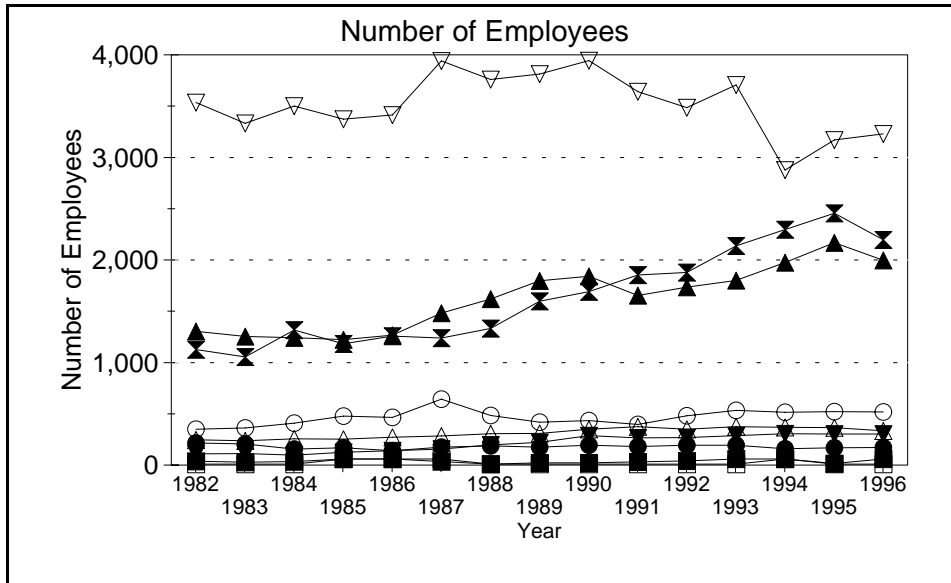


Business Statistics



Source: County Business Patterns, Ohio. These data are derived from all wage and salary employment covered by FICA which includes private non-farm employers and non-profit organizations, but does not include farms and the self employed.

Business Statistics

Number of Employees

Year	Ag. Services, Forestry, Fisheries*	Mining	Construction	Manufacturing	Transportation & Utilities	Wholesale Trade	Retail Trade	Finance, Insurance, Real Estate	Services	Not Classifiable	Total
1982	39	A	110	3,535	214	350	1,305	248	1,126	A	6,954
1983	29	A	113	3,332	206	363	1,254	236	1,055	A	6,618
1984	35	A	98	3,500	155	410	1,241	255	1,318	B	7,070
1985	B	B	125	3,373	170	477	1,223	252	1,181	85	6,944
1986	B	B	139	3,412	139	465	1,268	270	1,257	115	7,129
1987	33	B	155	3,942	176	644	1,483	283	1,238	A	7,994
1988	A	A	198	3,760	186	484	1,618	306	1,331	31	7,946
1989	21	A	220	3,813	176	417	1,797	308	1,596	B	8,435
1990	22	A	288	3,944	192	433	1,840	348	1,691	A	8,790
1991	30	A	266	3,640	181	396	1,655	374	1,852	A	8,417
1992	42	A	268	3,485	192	479	1,734	351	1,878	A	8,456
1993	B	A	288	3,707	193	534	1,801	374	2,136	18	9,105
1994	B	B	305	2,877	160	515	1,975	369	2,296	11	8,551
1995	17	A	302	3,171	168	521	2,170	365	2,454	A	9,197
1996	B	A	304	3,228	171	517	1,997	334	2,198	A	8,801

Number of Establishments

Year	Ag. Services, Forestry, Fisheries*	Mining	Construction	Manufacturing	Transportation & Utilities	Wholesale Trade	Retail Trade	Finance, Insurance, Real Estate	Services	Not Classifiable	Total
1982	6	2	35	47	19	36	151	30	131	7	464
1983	8	2	45	52	21	37	167	29	141	18	520
1984	9	2	38	51	16	39	166	29	138	40	528
1985	9	2	35	51	22	40	153	30	139	54	535
1986	10	2	42	51	21	42	150	30	150	48	546
1987	7	3	57	53	17	51	161	30	166	16	561
1988	5	2	57	57	19	47	163	30	159	42	581
1989	7	2	58	53	18	47	156	31	166	41	579
1990	6	2	65	54	17	45	162	31	171	23	576
1991	6	2	67	51	18	43	171	39	176	14	587
1992	7	2	69	54	21	45	178	50	191	10	627
1993	6	2	74	52	20	45	181	55	198	6	639
1994	8	2	85	50	21	44	181	53	199	8	651
1995	7	1	85	56	23	42	177	52	208	9	660
1996	11	1	93	60	21	43	174	54	226	9	692

Annual Payroll (Thousands of Dollars)

Year	Ag. Services, Forestry, Fisheries*	Mining	Construction	Manufacturing	Transportation & Utilities	Wholesale Trade	Retail Trade	Finance, Insurance, Real Estate	Services	Not Classifiable	Total
1982	337	D	1,327	64,380	3,644	4,968	9,805	3,115	10,351	D	98,163
1983	366	D	1,562	61,299	3,522	5,231	9,340	3,319	10,188	D	95,277
1984	487	D	1,873	69,413	3,295	6,365	10,159	3,469	11,775	D	107,443
1985	D	D	2,081	70,513	3,742	7,531	10,407	3,289	13,106	674	112,018
1986	D	D	2,826	78,388	2,920	7,625	11,359	4,151	14,070	1,756	123,945
1987	285	D	3,435	87,610	3,193	11,087	12,056	4,479	16,172	D	138,768
1988	D	D	4,920	93,600	3,566	11,300	14,268	4,787	17,594	1,081	151,569
1989	164	D	5,159	94,879	3,505	8,590	17,000	5,236	18,930	D	155,043
1990	250	D	5,014	104,580	3,549	8,821	16,748	5,667	21,765	D	166,940
1991	299	D	6,316	106,713	3,693	8,367	16,712	6,158	24,341	D	173,096
1992	549	D	7,775	104,972	4,934	10,939	17,877	7,024	27,715	D	182,187
1993	D	D	8,177	112,407	4,697	12,472	18,799	6,852	27,831	130	192,024
1994	D	D	7,406	95,140	4,317	11,108	20,303	6,776	32,476	128	178,373
1995	279	D	7,179	91,527	4,814	11,866	21,517	7,340	34,119	D	179,184
1996	D	D	7,236	98,719	5,068	12,177	22,442	8,317	31,917	D	186,721

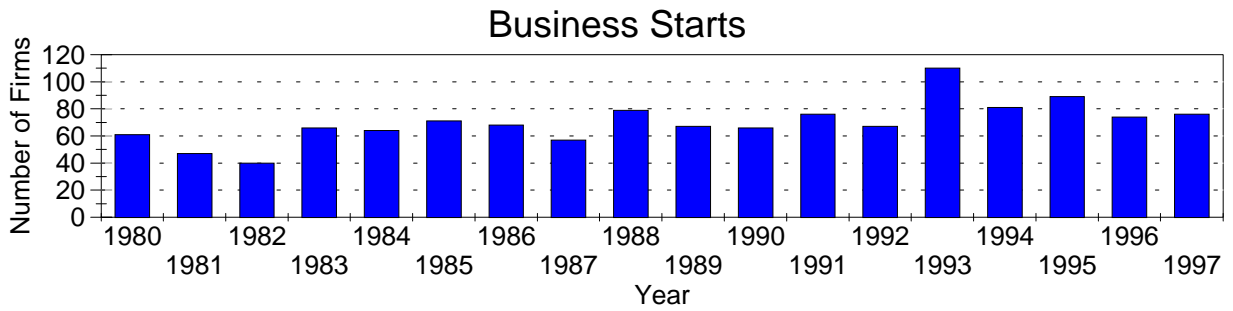
A=0-19, B=20-99, C=100-249, D=figures withheld, E=250-499,

F=500-999, G=1,000-2,499, H=2,500-4,999, I=5,000-9,999,

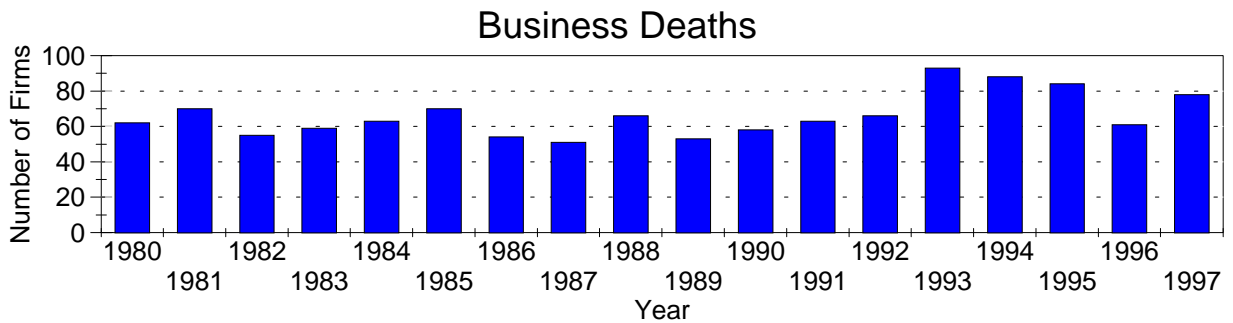
J=10,000-24,999, K=25,000-49,999, L=50,000-99,999, M=100,000 or more

*Ag. Services, Forestry & Fisheries include only non-farm businesses.

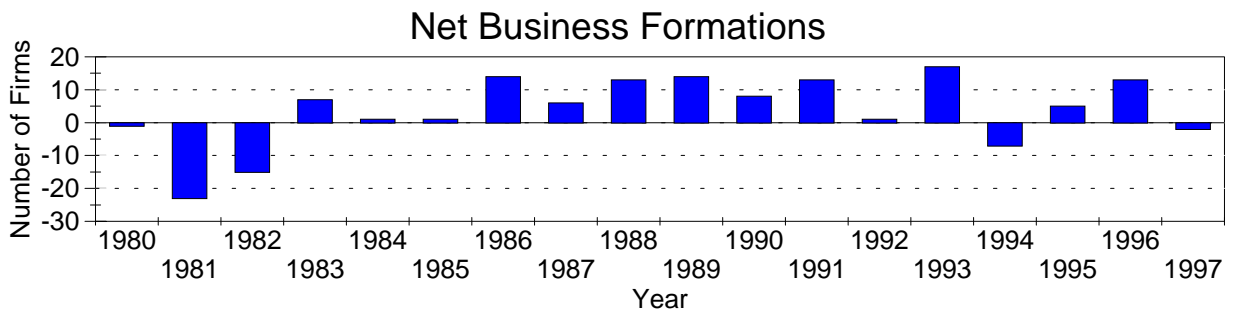
Business Statistics



Business starts and business deaths are determined from workers compensation records.



Business starts less business deaths equal net business formations.



Business Starts

Year	Number of Firms
1980	61
1981	47
1982	40
1983	66
1984	64
1985	71
1986	68
1987	57
1988	79
1989	67
1990	66
1991	76
1992	67
1993	110
1994	81
1995	89
1996	74
1997	76

Business Deaths

Year	Number of Firms
1980	62
1981	70
1982	55
1983	59
1984	63
1985	70
1986	54
1987	51
1988	66
1989	53
1990	58
1991	63
1992	66
1993	93
1994	88
1995	84
1996	61
1997	78

Net Business Formations

Year	Number of Firms
1980	-1
1981	-23
1982	-15
1983	7
1984	1
1985	1
1986	14
1987	6
1988	13
1989	14
1990	8
1991	13
1992	1
1993	17
1994	-7
1995	5
1996	13
1997	-2

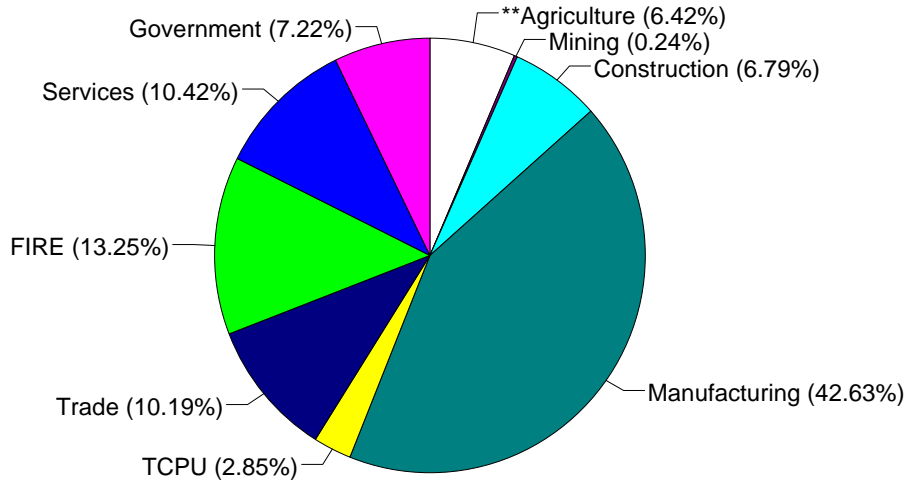
Source: Components of Business Change, Ohio Department of Development, Office of Strategic Research

Economic Structure

Total Value Added:
\$570.66 million.

Value Added by Sector (1993)*

Value Added is a broad measure of income that includes employee compensations, business profits, and returns to property, plant, and equipment.



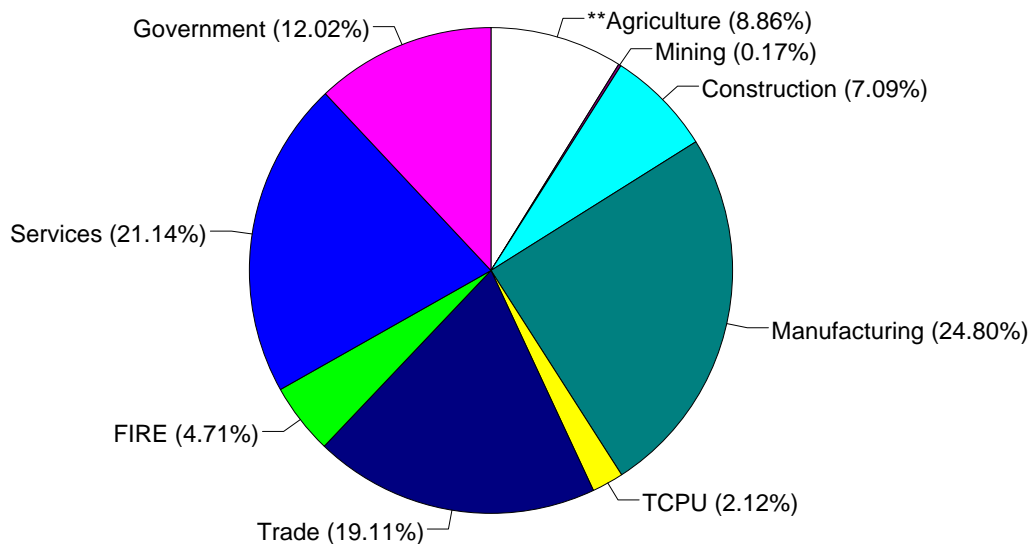
TCPU=Transportation, Communication, and Public Utilities.
FIRE=Finance, Insurance, and Real Estate.

*These estimates include many components not reported in other sources such as farms, self-employed, and small firms.

**Agriculture/Fishing/Forestry sector includes production agriculture (farm), agricultural services, forestry, and fishing enterprises.

Total Employment:
13,941 workers.

1993 Employment by Sector*



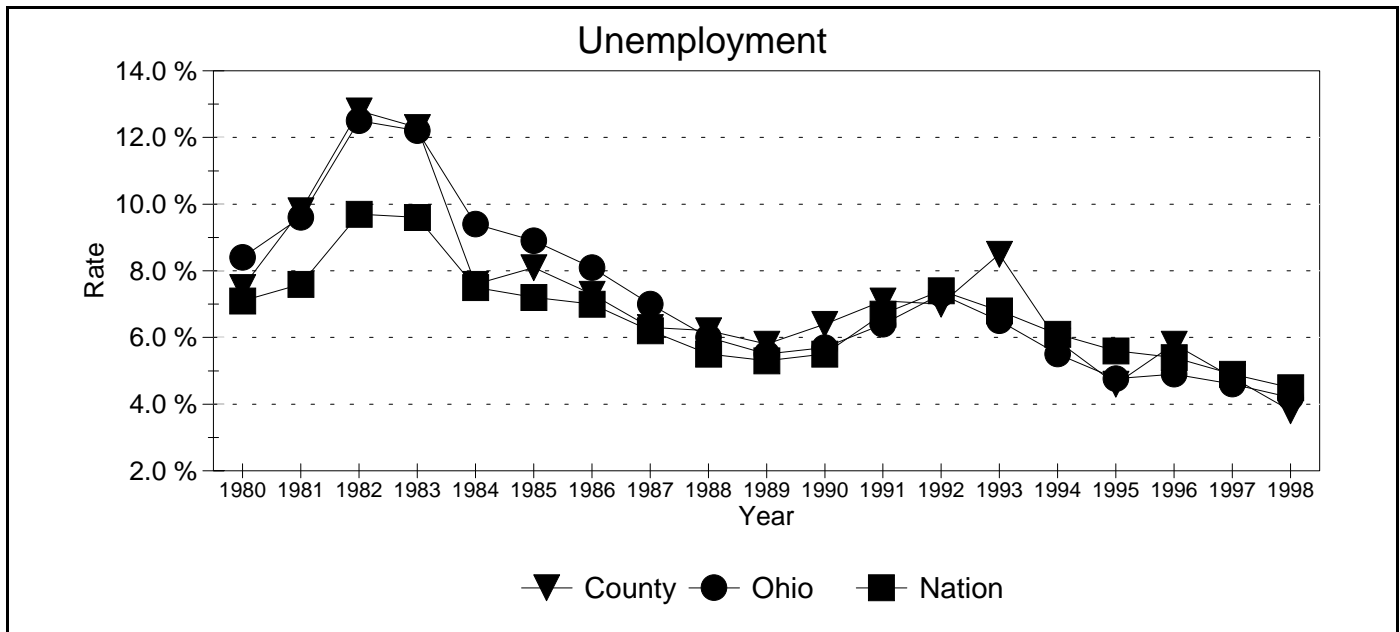
TCPU=Transportation, Communication, and Public Utilities.
FIRE=Finance, Insurance, and Real Estate.

*These estimates include many components not reported in other sources such as farms, self-employed, and small firms.

**Agriculture/Fishing/Forestry sector includes production agriculture (farm), agricultural services, forestry, and fishing enterprises.

Source: 1993 IMPLAN database, Minnesota Implan Group. IMPLAN is a non-survey regional input-output account generator originally developed by the U.S. Forest Service. These estimates provide a full picture of the county's economy.

Unemployment Statistics



Source: Bureau of Labor Statistics

Commuting Statistics

Residents retained in Champaign County: 9,399.

Residents of Neighboring Counties Working in Champaign County, 1990

County of Residence	Number of Incommuters
Clark	1,226
Logan	455
Miami	258
Jefferson	216
Franklin	147
Greene	87
Union	83

Residents of Champaign County Working in Neighboring Counties, 1990

County of Work	Number of Outcommuters
Clark	2,969
Union	1,339
Logan	795
Miami	635
Montgomery	470
Franklin	400
Shelby	286

Source: U.S. Census Bureau, 1990 Census Summary Tape File S-5.