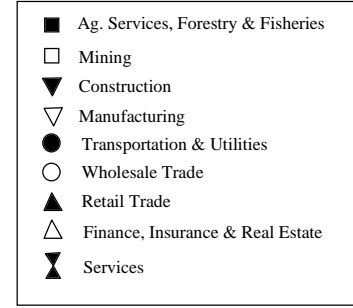
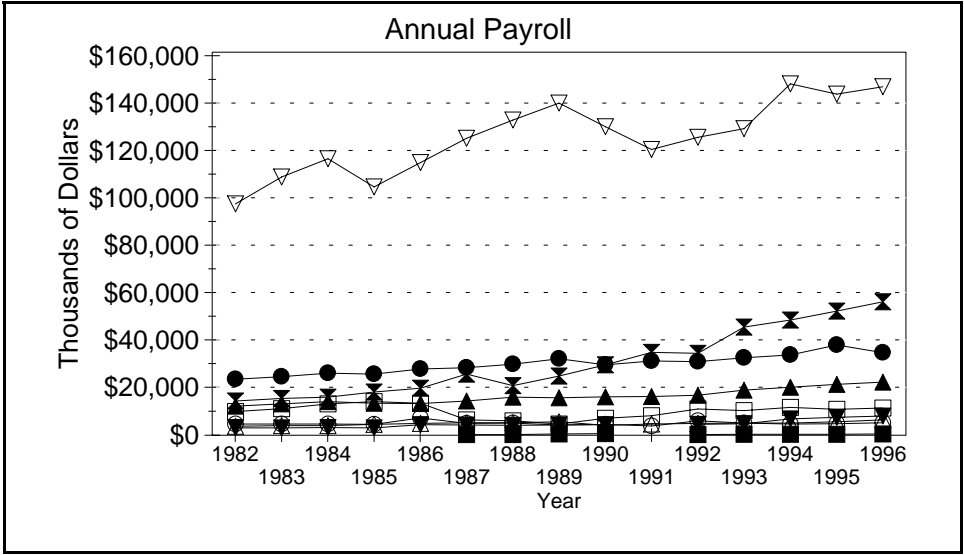
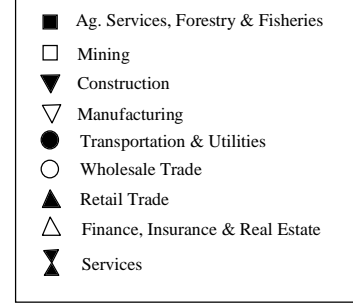
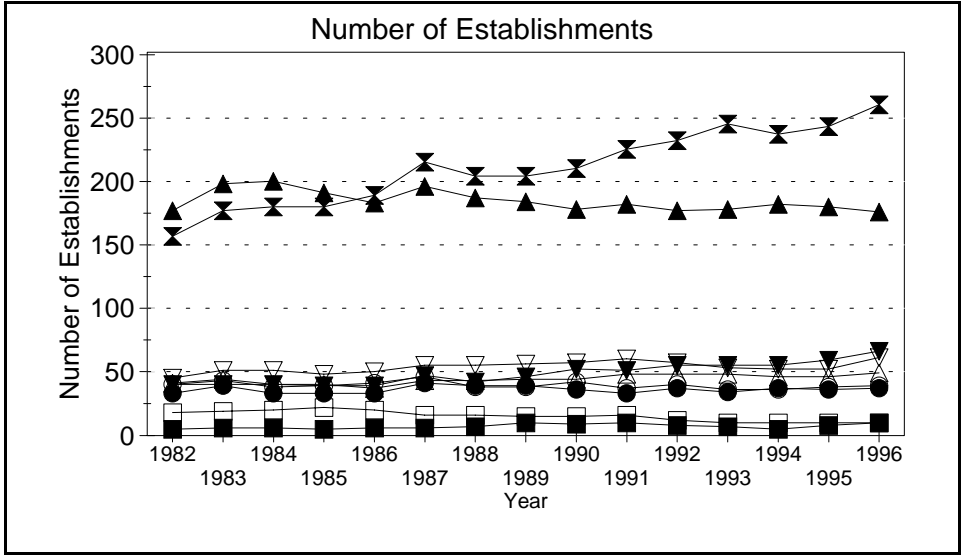
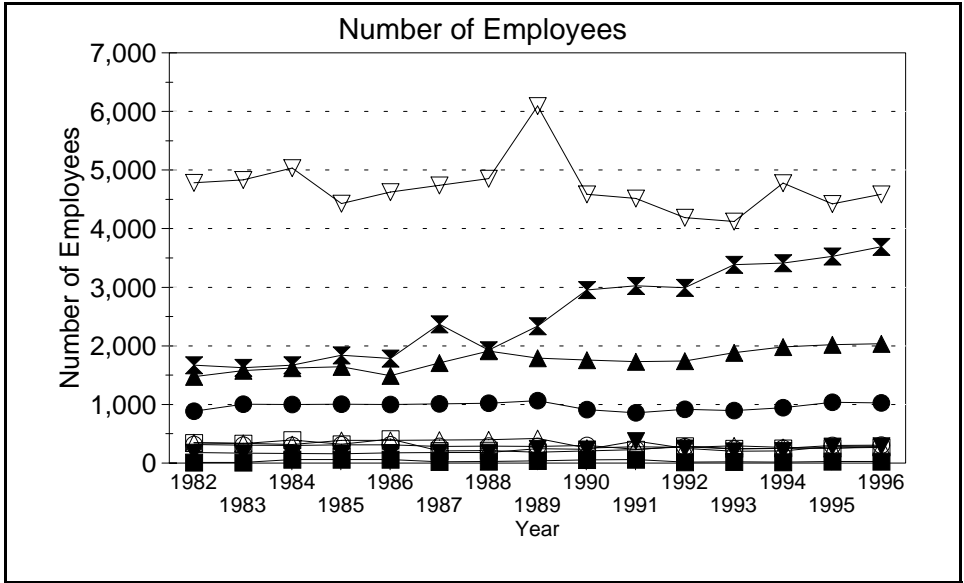


Business Statistics



Source: County Business Patterns, Ohio. These data are derived from all wage and salary employment covered by FICA which includes private non-farm employers and non-profit organizations, but does not include farms and the self employed.

Business Statistics

Number of Employees

Year	Ag. Services, Forestry, Fisheries*	Mining	Construction	Manufacturing	Transportation & Utilities	Wholesale Trade	Retail Trade	Finance, Insurance, Real Estate	Services	Not Classifiable	Total
1982	A	346	181	4,784	883	316	1,476	347	1,673	A	10,025
1983	A	333	168	4,833	1,003	307	1,579	337	1,629	A	10,206
1984	B	393	163	5,033	1,000	301	1,621	315	1,673	B	10,579
1985	B	324	159	4,427	1,005	311	1,641	387	1,839	C	10,232
1986	B	408	177	4,626	997	310	1,492	386	1,785	B	10,288
1987	24	210	179	4,740	1,011	284	1,709	393	2,369	6	10,925
1988	28	211	179	4,853	1,020	290	1,911	401	1,930	56	10,879
1989	37	184	247	6,095	1,066	284	1,793	420	2,337	91	12,554
1990	55	210	237	4,585	914	299	1,759	257	2,956	49	11,321
1991	B	230	E	4,514	859	233	1,731	280	3,026	11	11,222
1992	17	287	249	4,190	916	278	1,741	267	2,994	10	10,949
1993	22	248	200	4,123	895	242	1,882	294	3,383	8	11,297
1994	16	249	210	4,780	946	249	1,981	269	3,410	3	12,113
1995	25	256	286	4,425	1,037	299	2,022	253	3,525	15	12,143
1996	26	267	289	4,585	1,026	307	2,036	285	3,691	4	12,516

Number of Establishments

Year	Ag. Services, Forestry, Fisheries*	Mining	Construction	Manufacturing	Transportation & Utilities	Wholesale Trade	Retail Trade	Finance, Insurance, Real Estate	Services	Not Classifiable	Total
1982	5	18	40	45	33	40	176	41	156	9	563
1983	6	19	40	51	39	43	197	44	176	12	627
1984	6	20	40	51	33	38	199	40	179	46	652
1985	5	22	39	48	33	39	190	40	179	65	660
1986	6	20	39	50	33	41	182	37	188	49	645
1987	6	16	47	55	41	46	195	43	214	11	674
1988	7	16	42	55	39	38	186	43	203	41	670
1989	10	15	46	56	39	38	183	44	203	41	675
1990	9	15	52	57	36	42	177	44	209	26	667
1991	10	16	51	60	33	37	181	48	224	14	674
1992	8	12	55	57	37	40	176	48	231	9	673
1993	7	10	55	53	34	36	177	48	244	5	669
1994	5	10	55	52	37	36	181	46	236	4	662
1995	8	10	59	52	36	38	179	46	242	8	678
1996	10	10	66	61	37	39	175	49	259	3	709

Annual Payroll (Thousands of Dollars)

Year	Ag. Services, Forestry, Fisheries*	Mining	Construction	Manufacturing	Transportation & Utilities	Wholesale Trade	Retail Trade	Finance, Insurance, Real Estate	Services	Not Classifiable	Total
1982	D	9,846	3,067	96,584	23,370	4,653	12,204	3,786	14,308	D	167,967
1983	D	11,051	3,091	107,893	24,493	4,632	13,137	3,994	15,381	D	183,930
1984	D	13,106	3,255	115,467	25,954	4,629	14,047	4,062	15,878	D	196,889
1985	D	13,984	3,098	103,733	25,567	4,580	13,418	4,595	18,079	D	188,089
1986	D	13,389	4,351	113,828	27,621	7,182	13,261	4,942	19,637	D	205,022
1987	275	6,426	4,293	123,989	28,202	4,892	14,268	5,220	25,539	195	213,299
1988	311	5,996	4,204	131,707	29,722	5,045	15,889	5,182	20,762	1,295	220,113
1989	578	4,617	4,340	138,809	31,908	4,271	15,637	5,568	24,743	1,483	231,954
1990	645	7,088	4,404	128,794	29,400	4,570	16,016	4,198	29,394	253	224,762
1991	D	8,123	D	119,319	30,965	3,863	16,137	4,733	34,606	181	222,739
1992	322	10,902	4,523	124,492	30,751	6,080	16,716	4,950	34,256	156	233,148
1993	338	10,324	4,803	128,062	32,290	5,140	18,815	5,021	45,133	31	249,957
1994	341	11,672	6,760	146,821	33,586	4,697	20,045	5,123	48,097	23	277,165
1995	449	10,813	7,461	142,462	37,676	4,786	21,268	5,655	51,838	86	282,494
1996	481	11,355	8,076	145,546	34,505	5,177	22,216	6,453	55,782	31	289,622

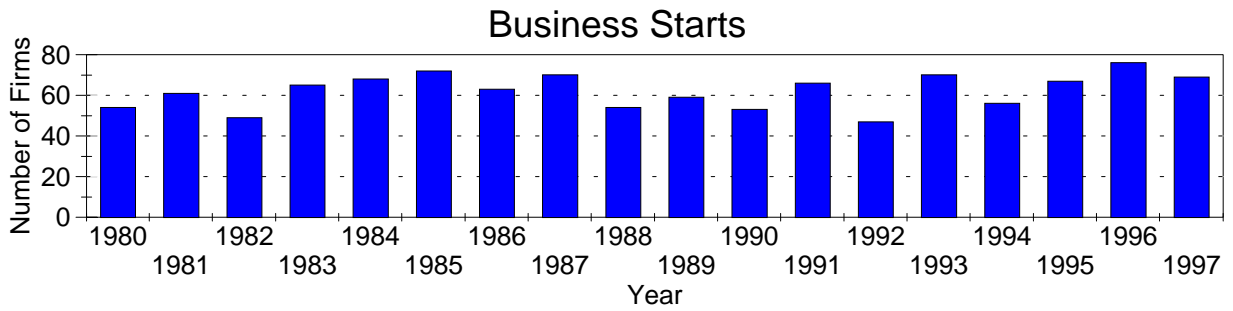
A=0-19, B=20-99, C=100-249, D=figures withheld, E=250-499,

F=500-999, G=1,000-2,499, H=2,500-4,999, I=5,000-9,999,

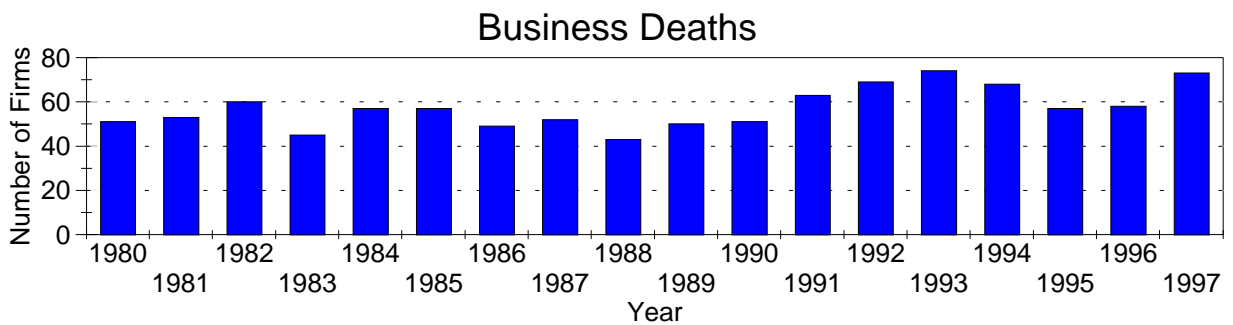
J=10,000-24,999, K=25,000-49,999, L=50,000-99,999, M=100,000 or more

*Ag. Services, Forestry & Fisheries include only non-farm businesses.

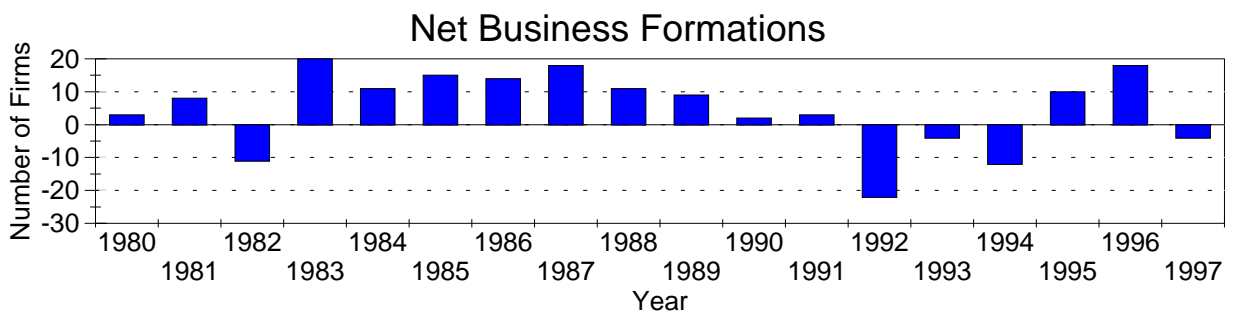
Business Statistics



Business starts and business deaths are determined from workers compensation records.



Business starts less business deaths equal net business formations.



Business Starts

Year	Number of Firms
1980	54
1981	61
1982	49
1983	65
1984	68
1985	72
1986	63
1987	70
1988	54
1989	59
1990	53
1991	66
1992	47
1993	70
1994	56
1995	67
1996	76
1997	69

Business Deaths

Year	Number of Firms
1980	51
1981	53
1982	60
1983	45
1984	57
1985	57
1986	49
1987	52
1988	43
1989	50
1990	51
1991	63
1992	69
1993	74
1994	68
1995	57
1996	58
1997	73

Net Business Formations

Year	Number of Firms
1980	3
1981	8
1982	-11
1983	20
1984	11
1985	15
1986	14
1987	18
1988	11
1989	9
1990	2
1991	3
1992	-22
1993	-4
1994	-12
1995	10
1996	18
1997	-4

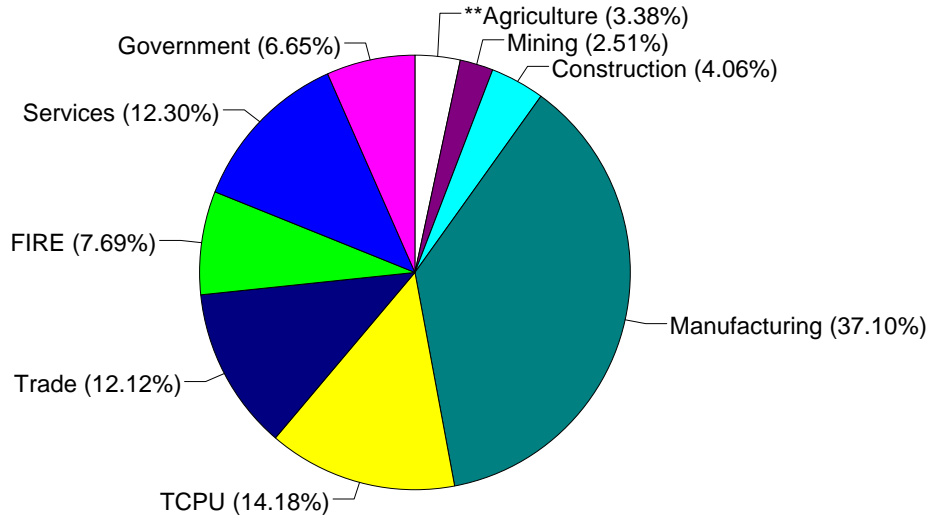
Source: Components of Business Change, Ohio Department of Development, Office of Strategic Research

Economic Structure

Total Value Added:
\$712.13 million.

Value Added by Sector (1993)*

Value Added is a broad measure of income that includes employee compensations, business profits, and returns to property, plant, and equipment.



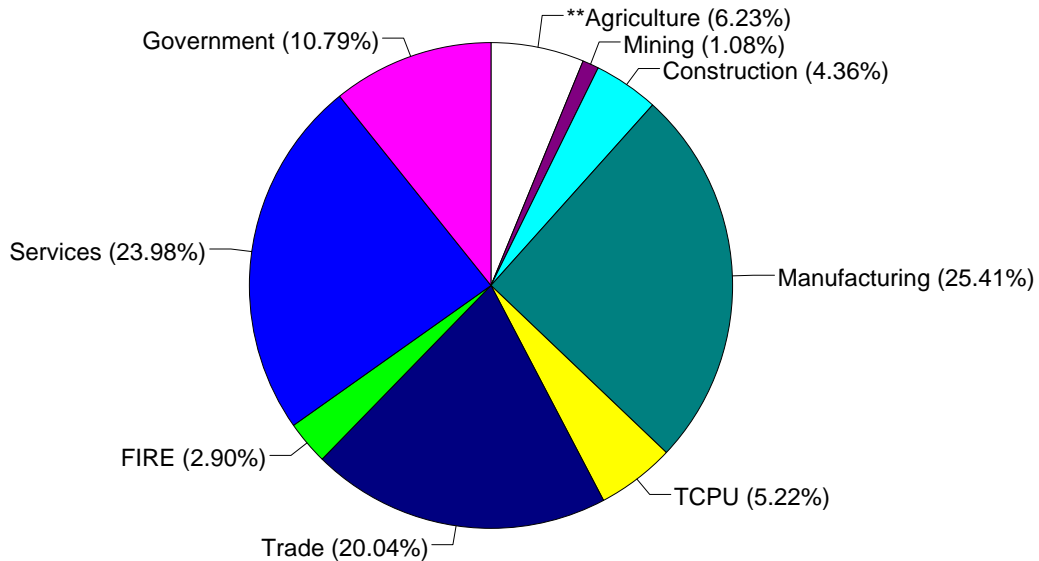
TCPU=Transportation, Communication, and Public Utilities.
FIRE=Finance, Insurance, and Real Estate.

*These estimates include many components not reported in other sources such as farms, self-employed, and small firms.

**Agriculture/Fishing/Forestry sector includes production agriculture (farm), agricultural services, forestry, and fishing enterprises.

Total Employment:
17,216 workers.

1993 Employment by Sector*



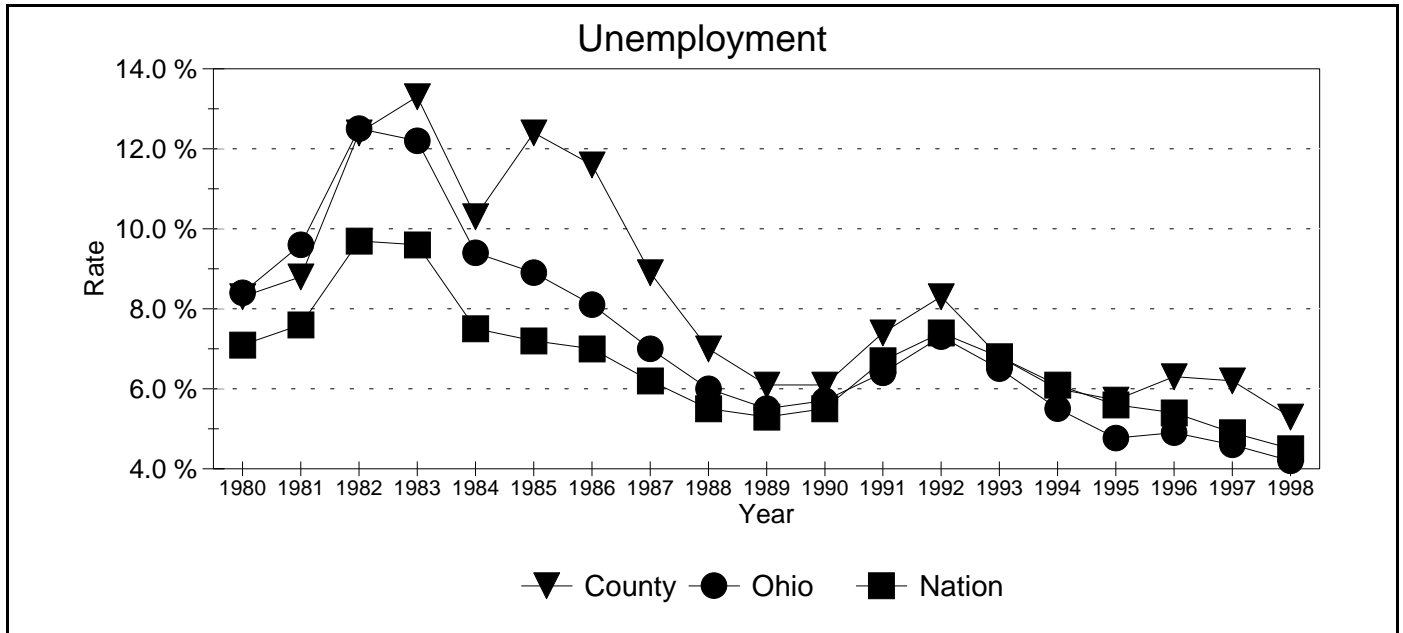
TCPU=Transportation, Communication, and Public Utilities.
FIRE=Finance, Insurance, and Real Estate.

*These estimates include many components not reported in other sources such as farms, self-employed, and small firms.

**Agriculture/Fishing/Forestry sector includes production agriculture (farm), agricultural services, forestry, and fishing enterprises.

Source: 1993 IMPLAN database, Minnesota Implan Group. IMPLAN is a non-survey regional input-output account generator originally developed by the U.S. Forest Service. These estimates provide a full picture of the county's economy.

Unemployment Statistics



Source: Bureau of Labor Statistics

Commuting Statistics

Residents retained in Coshocton County: 11,855.

Residents of Neighboring Counties Working in Coshocton County, 1990

County of Residence	Number of Incommuters
Muskingum	653
Tuscarawas	511
Licking	95
Guernsey	88
Holmes	81
Knox	79
Franklin	30

Residents of Coshocton County Working in Neighboring Counties, 1990

County of Work	Number of Outcommuters
Muskingum	656
Tuscarawas	637
Holmes	609
Licking	206
Franklin	111
Knox	91
Summit	52

Source: U.S. Census Bureau, 1990 Census Summary Tape File S-5.