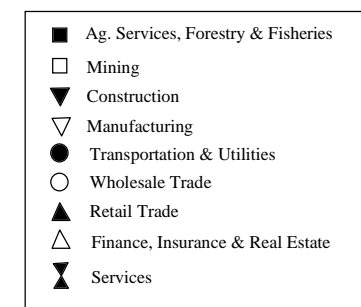
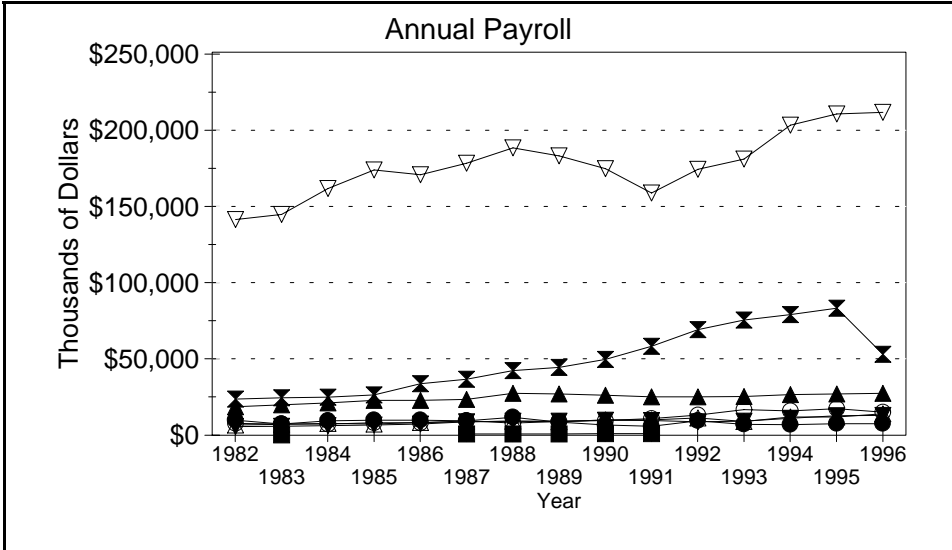
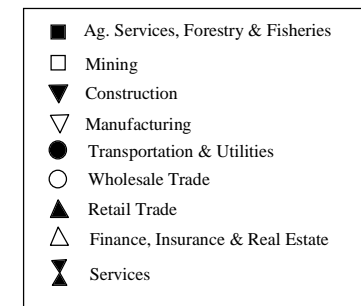
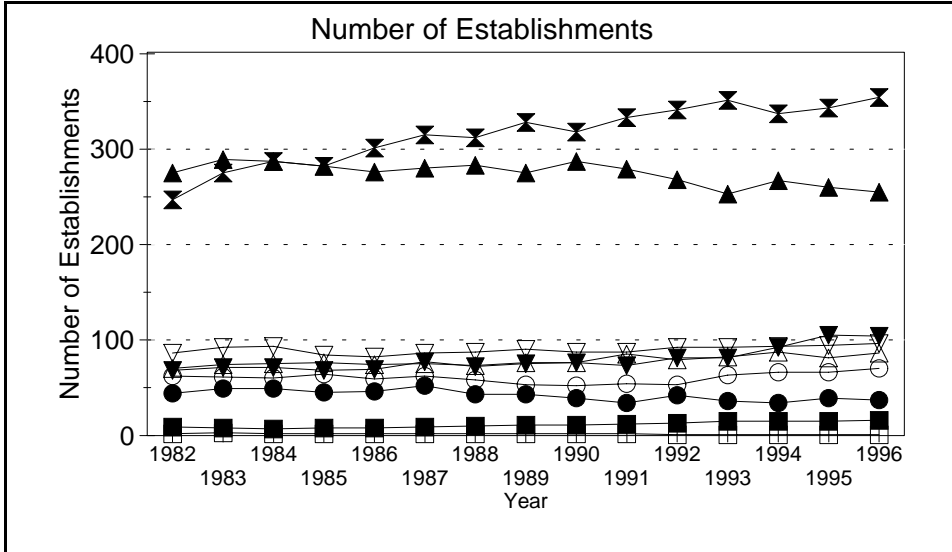
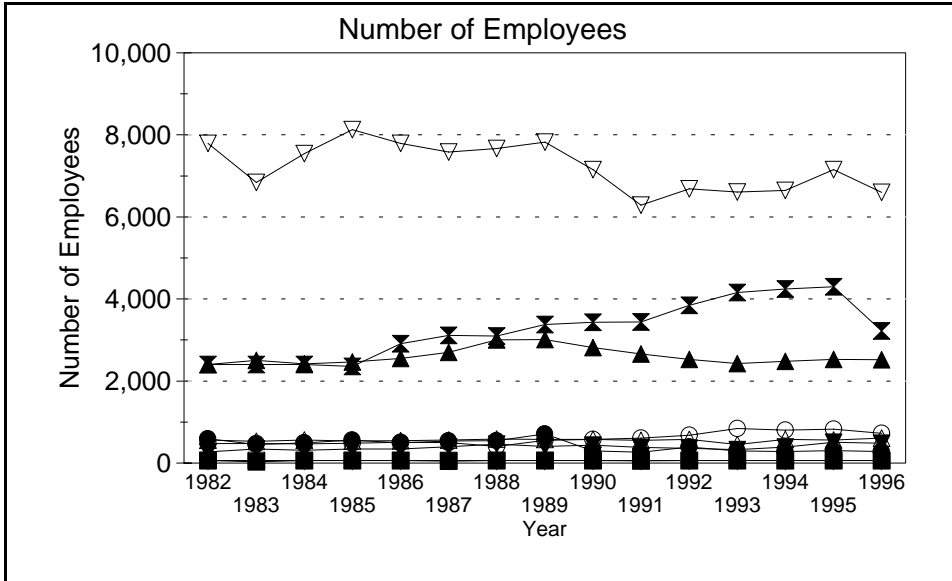


Business Statistics



Source: County Business Patterns, Ohio. These data are derived from all wage and salary employment covered by FICA which includes private non-farm employers and non-profit organizations, but does not include farms and the self employed.

Business Statistics

Number of Employees

Year	Ag. Services, Forestry, Fisheries*	Mining	Construction	Manufacturing	Transportation & Utilities	Wholesale Trade	Retail Trade	Finance, Insurance, Real Estate	Services	Not Classifiable	Total
1982	B	B	272	7,790	592	479	2,403	559	2,399	2	14,581
1983	30	B	344	6,837	450	474	2,503	531	2,403	A	13,641
1984	B	B	315	7,542	491	467	2,418	558	2,406	159	14,423
1985	B	B	341	8,131	562	486	2,465	537	2,356	173	15,139
1986	B	B	342	7,789	493	508	2,553	546	2,911	69	15,304
1987	48	B	395	7,585	539	501	2,700	565	3,109	A	15,508
1988	59	B	459	7,665	544	409	3,007	584	3,094	C	16,002
1989	61	B	409	7,826	711	556	3,010	581	3,381	B	16,679
1990	62	B	438	7,154	300	575	2,814	581	3,436	B	15,445
1991	54	B	384	6,289	269	610	2,661	553	3,439	A	14,331
1992	B	B	358	6,682	390	681	2,524	576	3,843	A	15,171
1993	B	B	326	6,610	300	846	2,425	451	4,158	A	15,246
1994	B	B	389	6,644	282	805	2,479	576	4,245	4	15,549
1995	B	B	507	7,152	306	823	2,530	563	4,301	A	16,321
1996	B	B	483	6,599	278	724	2,523	607	3,225	4	14,573

Number of Establishments

Year	Ag. Services, Forestry, Fisheries*	Mining	Construction	Manufacturing	Transportation & Utilities	Wholesale Trade	Retail Trade	Finance, Insurance, Real Estate	Services	Not Classifiable	Total
1982	9	2	68	86	44	62	274	70	246	6	867
1983	8	3	71	92	49	61	288	74	274	27	947
1984	7	2	71	93	49	60	286	75	286	76	1,005
1985	8	2	68	84	45	64	281	76	281	80	989
1986	8	2	69	82	46	59	275	74	300	50	965
1987	9	2	77	86	52	62	279	75	314	14	970
1988	10	2	72	87	43	58	282	73	311	52	990
1989	11	2	75	90	43	53	274	76	327	44	995
1990	11	2	76	87	39	52	286	76	317	31	977
1991	12	2	73	87	34	54	278	85	332	23	980
1992	13	1	81	92	42	53	267	79	340	10	978
1993	15	1	81	92	36	63	252	82	350	7	979
1994	15	1	92	93	34	66	266	87	336	11	1,001
1995	15	1	105	94	39	66	259	81	342	6	1,008
1996	16	1	104	96	37	70	254	86	353	4	1,021

Annual Payroll (Thousands of Dollars)

Year	Ag. Services, Forestry, Fisheries*	Mining	Construction	Manufacturing	Transportation & Utilities	Wholesale Trade	Retail Trade	Finance, Insurance, Real Estate	Services	Not Classifiable	Total
1982	D	D	5,618	140,844	9,897	7,674	18,632	6,756	23,566	18	214,104
1983	283	D	5,839	144,054	7,309	7,284	19,770	7,094	24,336	D	217,165
1984	D	D	6,343	161,018	9,456	7,224	21,078	7,737	24,931	764	240,106
1985	D	D	6,699	173,109	9,769	8,099	22,782	7,216	26,348	1,258	256,938
1986	D	D	7,336	169,929	9,880	8,214	22,770	8,379	33,603	549	262,605
1987	748	D	8,675	177,577	9,322	9,495	23,458	8,730	36,548	D	276,214
1988	886	D	9,151	187,549	11,775	7,971	27,324	9,182	42,147	D	298,997
1989	896	D	9,266	182,294	8,477	8,877	27,030	8,870	44,322	D	292,790
1990	975	D	9,805	174,051	6,596	9,588	26,097	10,100	49,477	D	288,483
1991	1,076	D	9,596	158,110	5,815	10,796	25,107	9,947	58,003	D	280,118
1992	D	D	8,791	173,599	9,455	13,261	25,072	11,221	68,863	D	313,385
1993	D	D	9,115	180,272	7,202	16,726	25,187	8,988	75,281	D	325,394
1994	D	D	11,001	202,382	6,796	15,900	26,497	11,870	78,792	67	356,113
1995	D	D	12,677	209,745	7,443	17,348	27,014	11,971	82,909	D	372,205
1996	D	D	12,876	210,736	7,492	15,009	27,283	14,021	52,921	30	343,557

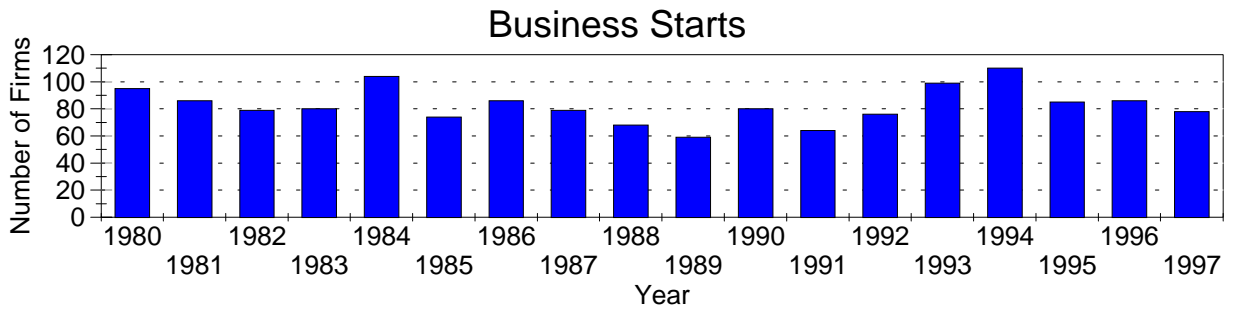
A=0-19, B=20-99, C=100-249, D=figures withheld, E=250-499,

F=500-999, G=1,000-2,499, H=2,500-4,999, I=5,000-9,999,

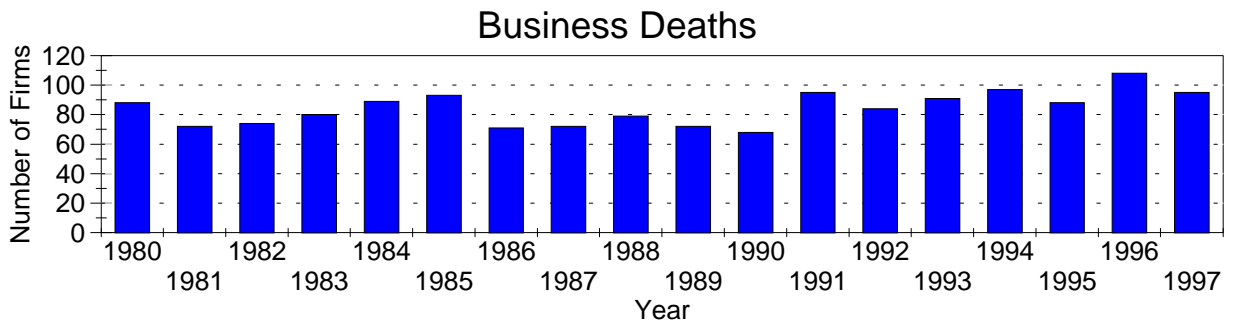
J=10,000-24,999, K=25,000-49,999, L=50,000-99,999, M=100,000 or more

\*Ag. Services, Forestry & Fisheries include only non-farm businesses.

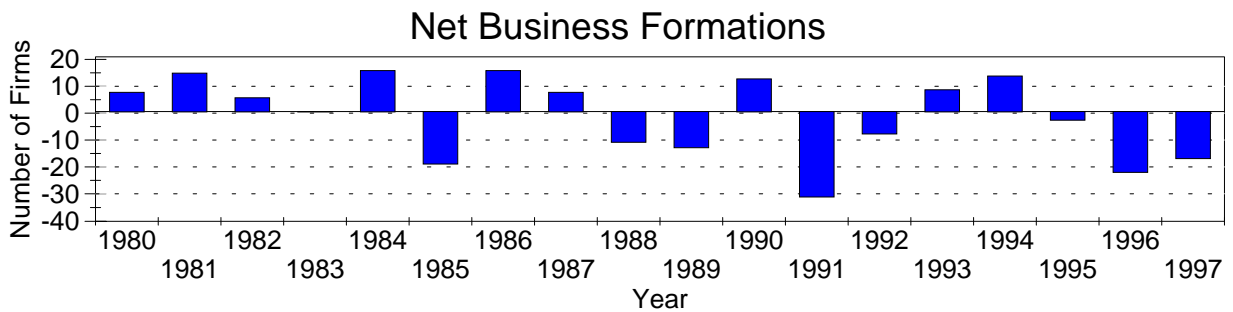
Business Statistics



Business starts and business deaths are determined from workers compensation records.



Business starts less business deaths equal net business formations.



Business Starts

Year	Number of Firms
1980	95
1981	86
1982	79
1983	80
1984	104
1985	74
1986	86
1987	79
1988	68
1989	59
1990	80
1991	64
1992	76
1993	99
1994	110
1995	85
1996	86
1997	78

Business Deaths

Year	Number of Firms
1980	88
1981	72
1982	74
1983	80
1984	89
1985	93
1986	71
1987	72
1988	79
1989	72
1990	68
1991	95
1992	84
1993	91
1994	97
1995	88
1996	108
1997	95

Net Business Formations

Year	Number of Firms
1980	7
1981	14
1982	5
1983	0
1984	15
1985	-19
1986	15
1987	7
1988	-11
1989	-13
1990	12
1991	-31
1992	-8
1993	8
1994	13
1995	-3
1996	-22
1997	-17

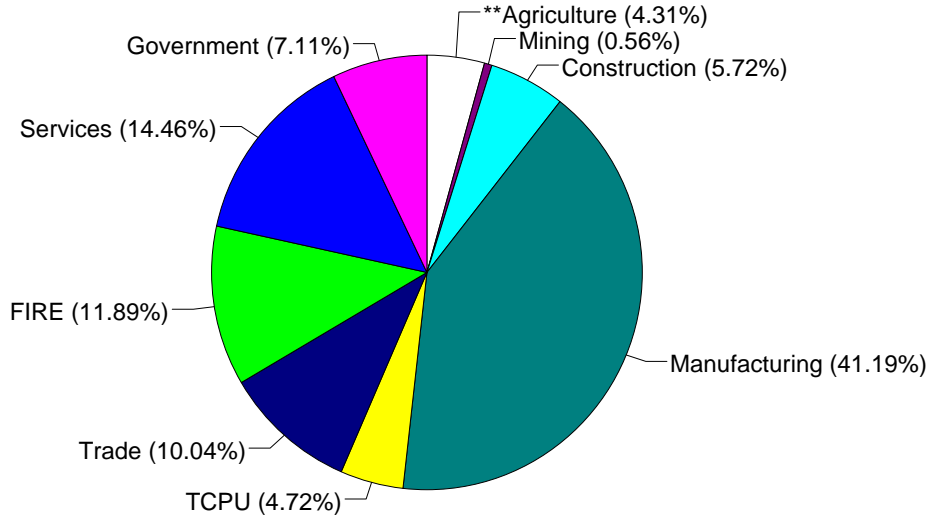
Source: Components of Business Change, Ohio Department of Development, Office of Strategic Research

Economic Structure

Total Value Added:  
\$778.63 million.

Value Added by Sector (1993)\*

Value Added is a broad measure of income that includes employee compensations, business profits, and returns to property, plant, and equipment.



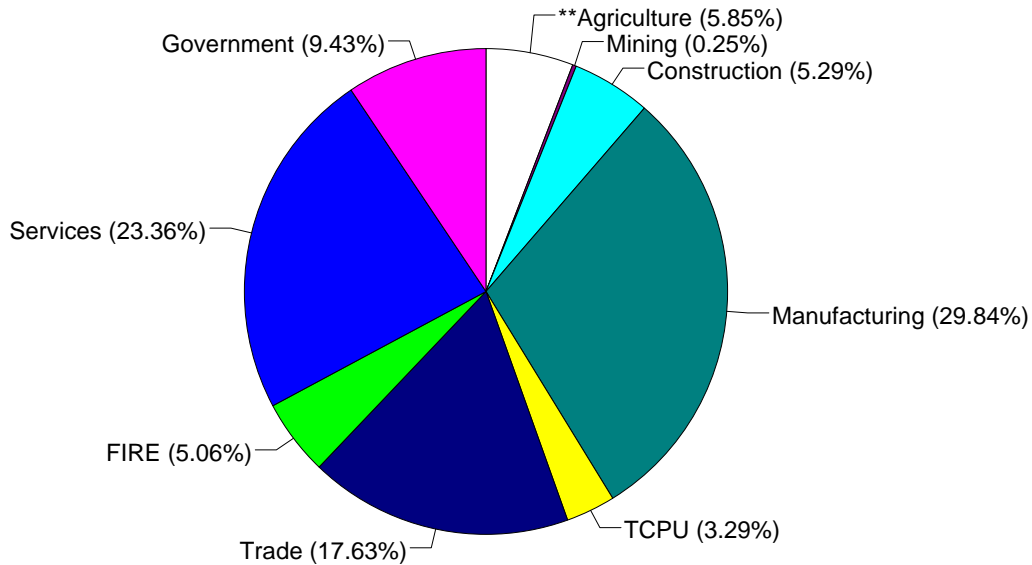
TCPU=Transportation, Communication, and Public Utilities.  
FIRE=Finance, Insurance, and Real Estate.

\*These estimates include many components not reported in other sources such as farms, self-employed, and small firms.

\*\*Agriculture/Fishing/Forestry sector includes production agriculture (farm), agricultural services, forestry, and fishing enterprises.

Total Employment:  
20,600 workers.

1993 Employment by Sector\*



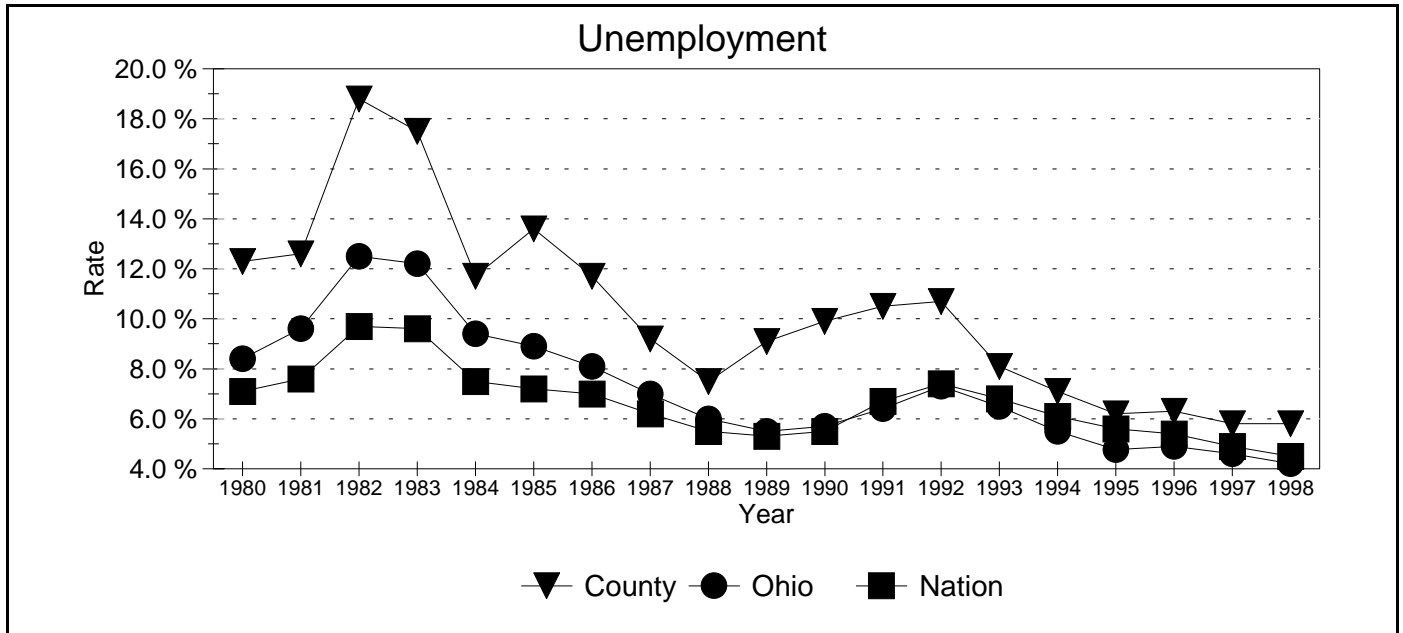
TCPU=Transportation, Communication, and Public Utilities.  
FIRE=Finance, Insurance, and Real Estate.

\*These estimates include many components not reported in other sources such as farms, self-employed, and small firms.

\*\*Agriculture/Fishing/Forestry sector includes production agriculture (farm), agricultural services, forestry, and fishing enterprises.

Source: 1993 IMPLAN database, Minnesota Implan Group. IMPLAN is a non-survey regional input-output account generator originally developed by the U.S. Forest Service. These estimates provide a full picture of the county's economy.

Unemployment Statistics



Source: Bureau of Labor Statistics

Commuting Statistics

Residents retained in Crawford County: 14,665.

Residents of Neighboring Counties Working in Crawford County, 1990

County of Residence	Number of Incommuters
Richland	1,076
Morrow	927
Marion	391
Wyandot	326
Seneca	201
Franklin	50
Huron	39

Residents of Crawford County Working in Neighboring Counties, 1990

County of Work	Number of Outcommuters
Richland	3,045
Marion	562
Wyandot	532
Huron	366
Morrow	262
Franklin	220
Seneca	200

Source: U.S. Census Bureau, 1990 Census Summary Tape File S-5.