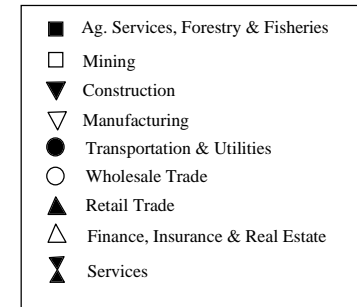
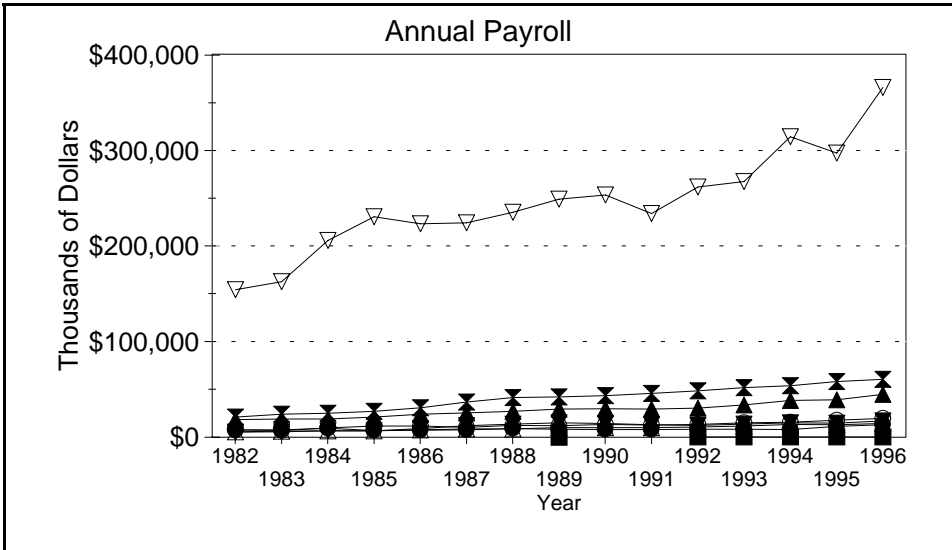
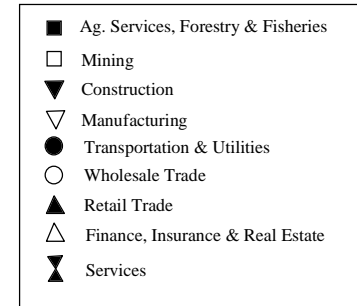
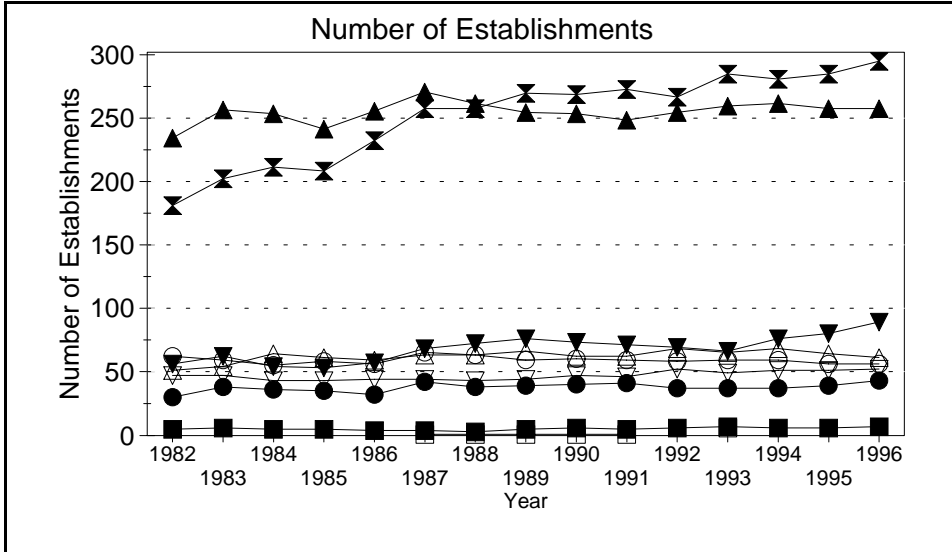
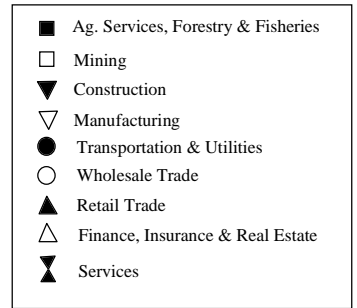
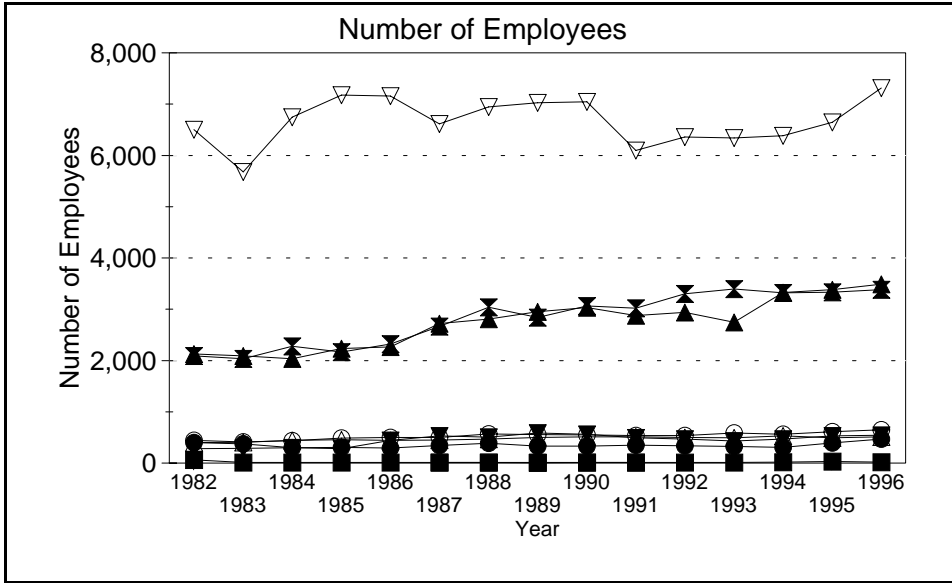


Business Statistics



Source: County Business Patterns, Ohio. These data are derived from all wage and salary employment covered by FICA which includes private non-farm employers and non-profit organizations, but does not include farms and the self employed.

Business Statistics

Number of Employees

Year	Ag. Services, Forestry, Fisheries*	Mining	Construction	Manufacturing	Transportation & Utilities	Wholesale Trade	Retail Trade	Finance, Insurance, Real Estate	Services	Not Classifiable	Total
1982	B		282	6,504	398	440	2,127	400	2,091	A	12,265
1983	A		288	5,676	374	411	2,090	405	2,035	A	11,299
1984	A		298	6,744	298	437	2,034	443	2,278	B	12,633
1985	A		279	7,177	304	489	2,236	457	2,167	B	13,203
1986	A		444	7,158	296	501	2,265	440	2,324	B	13,492
1987	A	A	532	6,616	344	499	2,718	451	2,665	16	13,858
1988	A	A	506	6,948	386	568	2,806	468	3,041	60	14,803
1989	9	A	584	7,025	333	557	2,949	498	2,837	B	14,895
1990	A	A	563	7,048	330	551	3,030	513	3,063	19	15,137
1991	A	A	496	6,094	349	537	2,874	510	3,023	3	13,906
1992	11		471	6,356	335	534	2,941	499	3,298	16	14,461
1993	13		433	6,337	324	586	2,745	490	3,395	19	14,342
1994	19		466	6,381	306	562	3,328	533	3,322	9	14,926
1995	32		530	6,644	395	609	3,383	492	3,334	15	15,434
1996	19		542	7,311	466	646	3,490	509	3,384	9	16,376

Number of Establishments

Year	Ag. Services, Forestry, Fisheries*	Mining	Construction	Manufacturing	Transportation & Utilities	Wholesale Trade	Retail Trade	Finance, Insurance, Real Estate	Services	Not Classifiable	Total
1982	5		56	47	30	62	233	51	180	6	670
1983	6		62	47	38	59	255	54	201	12	734
1984	5		54	43	36	55	252	64	210	47	766
1985	5		53	43	35	58	240	61	207	56	758
1986	4		57	44	32	56	254	59	231	42	779
1987	4	1	68	44	42	65	269	63	256	7	819
1988	3	1	72	43	38	63	260	63	256	32	831
1989	5	1	76	44	39	59	253	66	268	44	855
1990	6	1	73	47	40	60	252	62	267	22	830
1991	5	1	71	46	41	59	247	62	271	16	819
1992	6		69	52	37	58	253	68	265	11	819
1993	7	6	66	49	37	59	258	65	283	9	833
1994	6		76	51	37	59	260	68	279	8	844
1995	6		80	51	39	56	256	64	283	9	844
1996	7		89	52	43	56	256	61	293	4	861

Annual Payroll (Thousands of Dollars)

Year	Ag. Services, Forestry, Fisheries*	Mining	Construction	Manufacturing	Transportation & Utilities	Wholesale Trade	Retail Trade	Finance, Insurance, Real Estate	Services	Not Classifiable	Total
1982	D		5,306	154,058	7,591	7,726	18,460	5,515	21,071	D	219,861
1983	D		5,833	162,438	7,770	7,116	18,981	6,223	23,970	D	232,606
1984	D		6,803	205,349	9,446	9,553	19,133	6,743	25,095	D	282,829
1985	D		6,713	230,334	7,118	11,570	20,965	6,781	26,988	D	311,142
1986	D		8,923	222,801	7,435	11,674	23,979	7,602	30,644	D	314,607
1987	D	D	12,135	223,764	7,806	10,304	25,489	8,543	36,747	112	325,269
1988	D	D	13,837	235,007	8,972	12,320	27,080	8,555	41,350	484	348,034
1989	127	D	14,936	248,661	8,332	11,910	29,432	10,071	42,030	D	366,855
1990	D	D	14,220	252,846	8,041	13,347	29,608	10,139	43,404	241	372,253
1991	D	D	12,943	233,662	8,179	12,842	29,392	10,172	45,919	101	353,649
1992	176		12,449	261,251	8,200	13,500	30,493	10,756	48,353	82	385,260
1993	402		13,629	266,978	8,400	14,978	33,889	11,640	51,931	144	401,991
1994	415		14,871	313,936	8,128	15,666	38,450	13,222	53,871	119	458,678
1995	448		14,800	296,671	11,414	17,568	39,017	13,054	58,017	107	451,096
1996	448		17,041	365,164	12,872	19,569	44,746	14,355	60,383	55	534,633

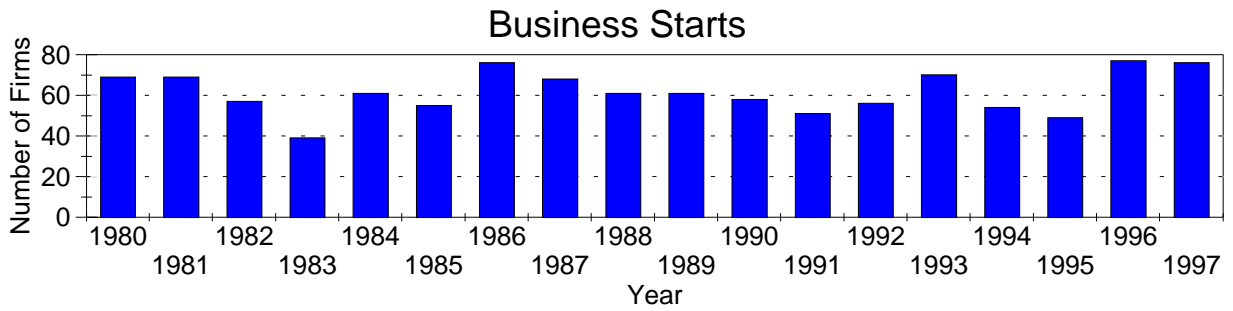
A=0-19, B=20-99, C=100-249, D=figures withheld, E=250-499,

F=500-999, G=1,000-2,499, H=2,500-4,999, I=5,000-9,999,

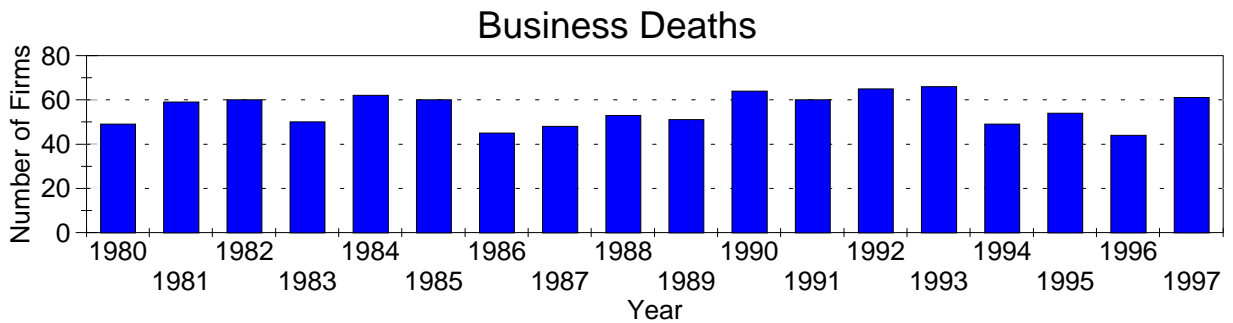
J=10,000-24,999, K=25,000-49,999, L=50,000-99,999, M=100,000 or more

*Ag. Services, Forestry & Fisheries include only non-farm businesses.

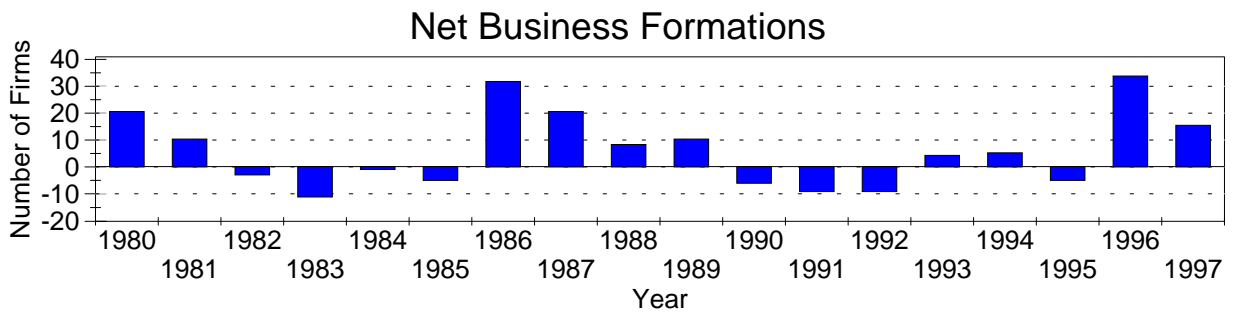
Business Statistics



Business starts and business deaths are determined from workers compensation records.



Business starts less business deaths equal net business formations.



Business Starts

Year	Number of Firms
1980	69
1981	69
1982	57
1983	39
1984	61
1985	55
1986	76
1987	68
1988	61
1989	61
1990	58
1991	51
1992	56
1993	70
1994	54
1995	49
1996	77
1997	76

Business Deaths

Year	Number of Firms
1980	49
1981	59
1982	60
1983	50
1984	62
1985	60
1986	45
1987	48
1988	53
1989	51
1990	64
1991	60
1992	65
1993	66
1994	49
1995	54
1996	44
1997	61

Net Business Formations

Year	Number of Firms
1980	20
1981	10
1982	-3
1983	-11
1984	-1
1985	-5
1986	31
1987	20
1988	8
1989	10
1990	-6
1991	-9
1992	-9
1993	4
1994	5
1995	-5
1996	33
1997	15

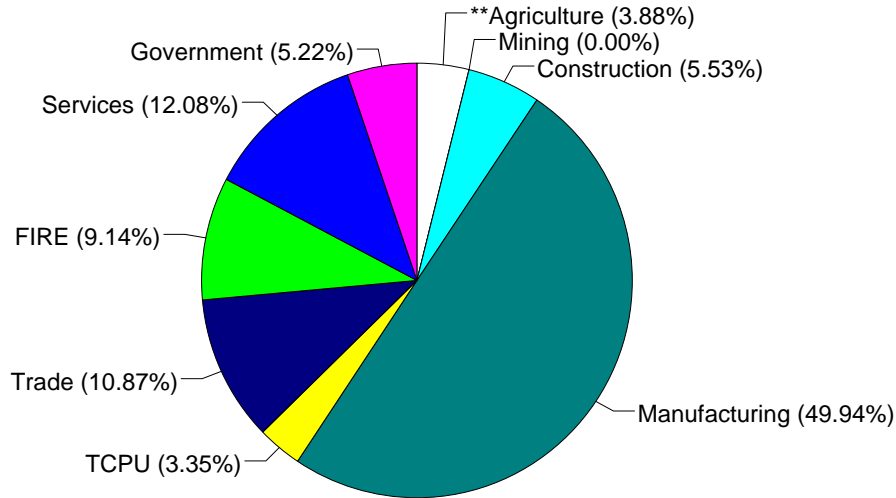
Source: Components of Business Change, Ohio Department of Development, Office of Strategic Research

Economic Structure

Total Value Added:
\$945.19 million.

Value Added by Sector (1993)*

Value Added is a broad measure of income that includes employee compensations, business profits, and returns to property, plant, and equipment.



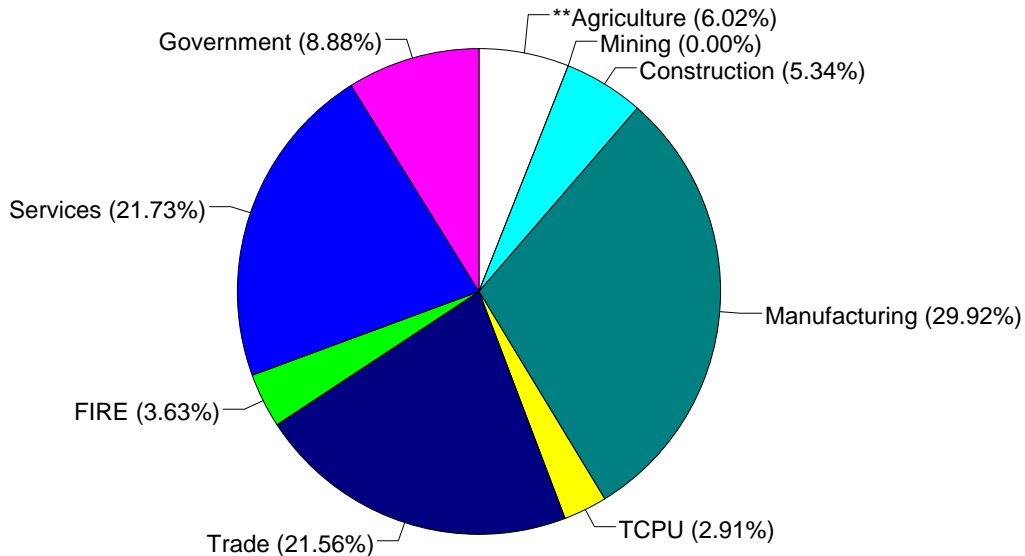
TCPU=Transportation, Communication, and Public Utilities.
FIRE=Finance, Insurance, and Real Estate.

*These estimates include many components not reported in other sources such as farms, self-employed, and small firms.

**Agriculture/Fishing/Forestry sector includes production agriculture (farm), agricultural services, forestry, and fishing enterprises.

Total Employment:
20,366 workers.

1993 Employment by Sector*



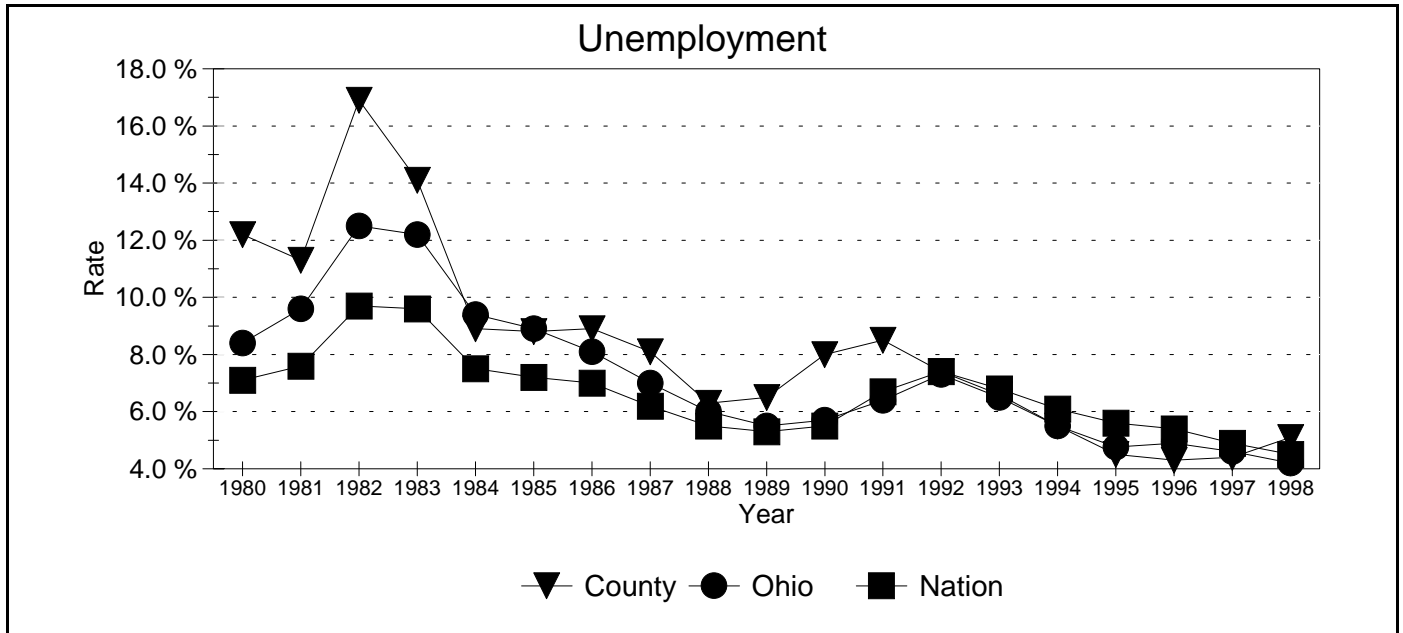
TCPU=Transportation, Communication, and Public Utilities.
FIRE=Finance, Insurance, and Real Estate.

*These estimates include many components not reported in other sources such as farms, self-employed, and small firms.

**Agriculture/Fishing/Forestry sector includes production agriculture (farm), agricultural services, forestry, and fishing enterprises.

Source: 1993 IMPLAN database, Minnesota Implan Group. IMPLAN is a non-survey regional input-output account generator originally developed by the U.S. Forest Service. These estimates provide a full picture of the county's economy.

Unemployment Statistics



Source: Bureau of Labor Statistics

Commuting Statistics

Residents retained in Defiance County: 13,025.

Residents of Neighboring Counties Working in Defiance County, 1990

County of Residence	Number of Incommuters
Paulding	1,557
Henry	1,128
Putnam	921
Williams	563
Allen	208
Fulton	154
Allen	134

Residents of Defiance County Working in Neighboring Counties, 1990

County of Work	Number of Outcommuters
Williams	1,699
Henry	788
Allen	769
Fulton	601
Paulding	393
De Kalb (IN)	346
Lucas	102

Source: U.S. Census Bureau, 1990 Census Summary Tape File S-5.