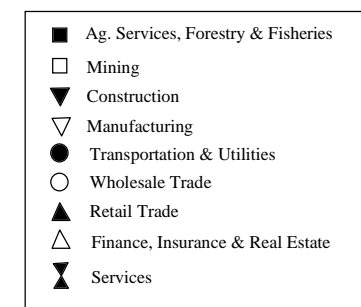
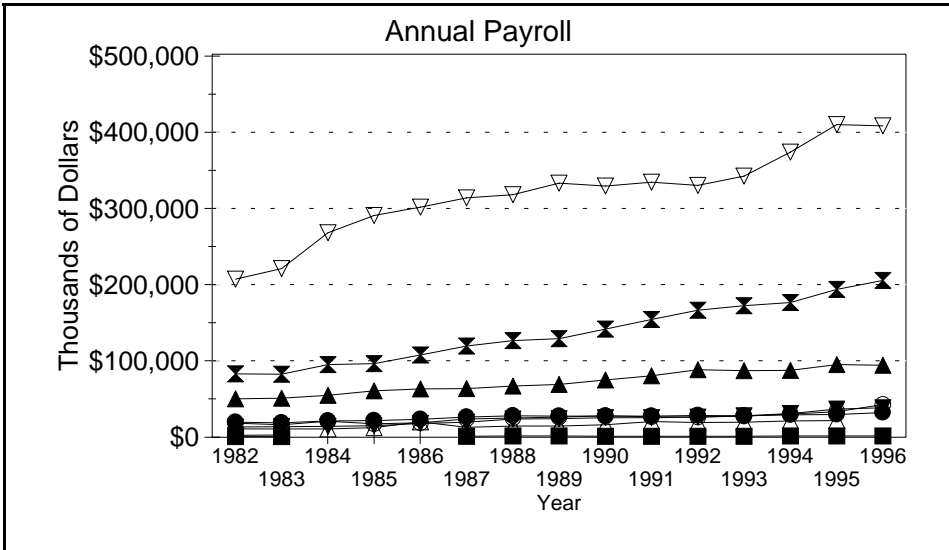
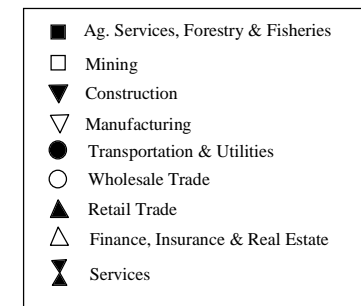
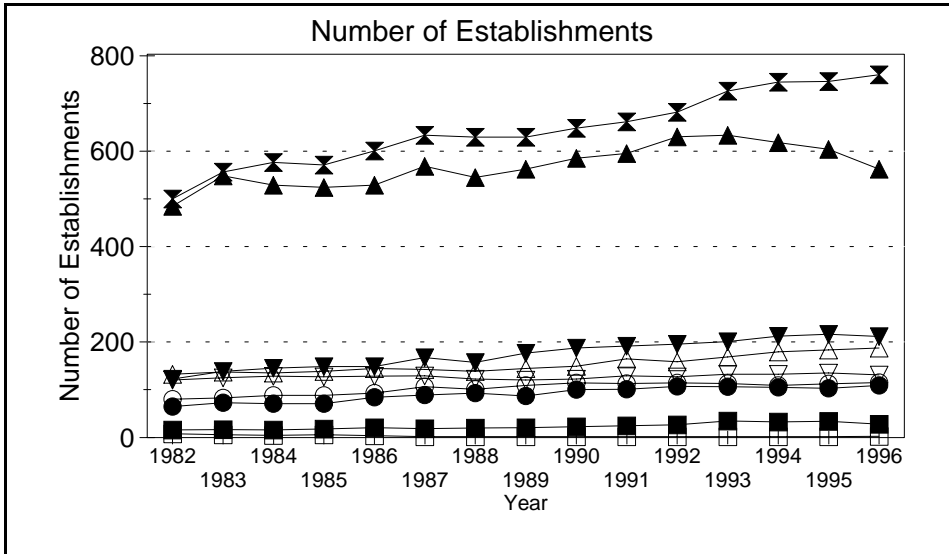
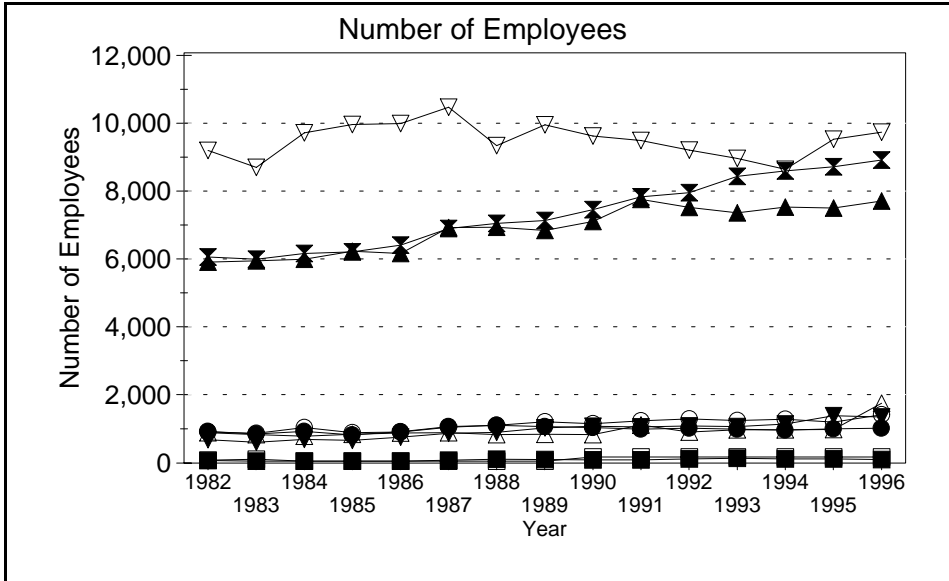


Business Statistics



Source: County Business Patterns, Ohio. These data are derived from all wage and salary employment covered by FICA which includes private non-farm employers and non-profit organizations, but does not include farms and the self employed.

Business Statistics

Number of Employees

Year	Ag. Services, Forestry, Fisheries*	Mining	Construction	Manufacturing	Transportation & Utilities	Wholesale Trade	Retail Trade	Finance, Insurance, Real Estate	Services	Not Classifiable	Total
1982	74	87	681	9,148	923	911	5,880	888	6,032	24	24,648
1983	59	110	606	8,652	850	868	5,916	836	5,959	56	23,912
1984	B	B	695	9,663	922	1,041	5,962	785	6,135	145	25,516
1985	B	B	664	9,900	822	888	6,197	845	6,181	232	25,897
1986	B	B	757	9,933	913	906	6,127	882	6,377	152	26,194
1987	85	B	869	10,405	1,064	1,053	6,890	888	6,859	B	28,217
1988	114	B	903	9,281	1,101	1,109	6,894	830	7,008	B	27,408
1989	107	B	1,031	9,891	1,067	1,211	6,806	847	7,095	C	28,284
1990	94	C	1,080	9,562	1,037	1,147	7,064	829	7,413	B	28,413
1991	93	C	1,061	9,433	991	1,239	7,717	1,116	7,790	B	29,581
1992	124	C	1,086	9,155	1,016	1,296	7,480	910	7,913	A	29,135
1993	138	C	1,063	8,915	992	1,249	7,321	974	8,388	A	29,266
1994	118	C	1,139	8,595	964	1,279	7,487	970	8,544	A	29,327
1995	119	C	1,388	9,470	1,003	1,198	7,459	979	8,667	B	30,514
1996	105	C	1,349	9,677	1,017	1,417	7,668	G	8,865	A	31,274

Number of Establishments

Year	Ag. Services, Forestry, Fisheries*	Mining	Construction	Manufacturing	Transportation & Utilities	Wholesale Trade	Retail Trade	Finance, Insurance, Real Estate	Services	Not Classifiable	Total
1982	16	8	122	120	65	80	483	132	498	20	1,544
1983	17	6	138	125	73	83	546	137	554	58	1,737
1984	16	5	145	128	71	88	527	135	574	95	1,784
1985	18	6	148	127	71	88	522	138	569	124	1,811
1986	21	4	148	128	84	93	527	144	598	97	1,844
1987	19	2	167	129	89	106	566	142	631	43	1,894
1988	20	2	157	122	93	101	543	138	627	101	1,904
1989	21	2	176	120	87	109	560	144	627	117	1,963
1990	23	2	187	122	100	114	583	149	646	72	1,998
1991	25	2	191	129	101	113	593	164	659	27	2,004
1992	27	2	195	127	107	114	628	158	679	18	2,055
1993	35	2	200	132	106	113	631	168	723	20	2,130
1994	33	2	212	132	105	109	616	179	742	14	2,144
1995	34	2	216	135	103	112	602	183	743	17	2,147
1996	28	3	211	131	109	115	560	187	757	8	2,109

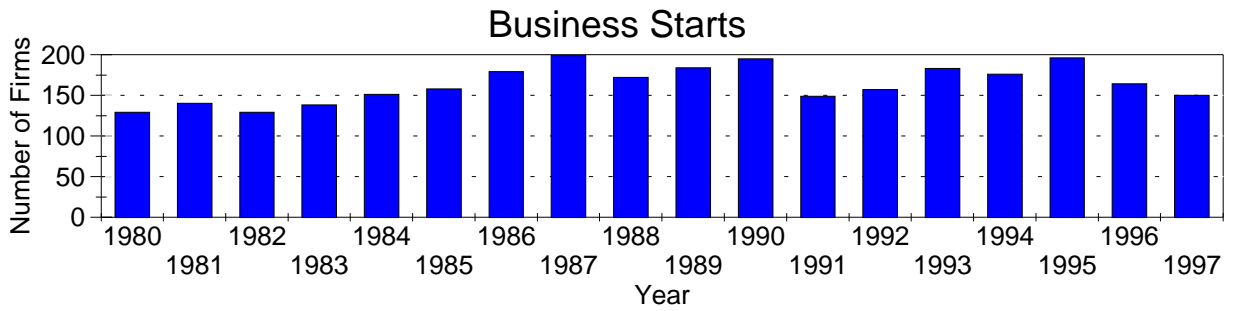
Annual Payroll (Thousands of Dollars)

Year	Ag. Services, Forestry, Fisheries*	Mining	Construction	Manufacturing	Transportation & Utilities	Wholesale Trade	Retail Trade	Finance, Insurance, Real Estate	Services	Not Classifiable	Total
1982	752	2,695	13,377	206,547	19,817	18,319	50,075	10,890	82,574	268	405,314
1983	702	2,801	13,798	220,160	18,964	16,274	50,937	11,000	82,350	999	417,986
1984	D	D	14,256	266,740	21,346	20,898	54,752	11,001	94,846	1,868	489,084
1985	D	D	14,926	289,650	21,803	17,361	60,368	12,543	96,235	2,835	519,326
1986	D	D	18,103	300,488	23,485	18,713	63,237	20,098	107,167	1,900	556,939
1987	1,307	D	19,611	312,283	26,163	23,769	63,292	13,019	118,909	D	581,545
1988	1,501	D	23,984	316,608	28,131	25,080	67,020	14,570	126,060	D	608,834
1989	1,505	D	24,387	331,540	27,737	26,399	68,903	14,719	128,720	D	629,466
1990	1,192	D	25,345	328,073	27,465	27,795	74,820	16,194	141,322	D	647,144
1991	1,281	D	25,538	332,735	27,615	26,754	80,348	20,367	153,709	D	672,978
1992	1,246	D	26,286	328,734	28,273	26,479	88,134	19,088	165,637	D	687,924
1993	1,453	D	27,819	340,706	28,059	27,636	86,952	19,464	171,855	D	709,170
1994	1,625	D	31,071	372,018	29,078	30,264	87,492	21,425	175,749	D	753,376
1995	1,748	D	36,963	408,051	29,672	33,395	94,650	21,860	193,167	D	824,305
1996	1,522	D	38,556	406,429	32,018	42,575	94,169	D	204,656	D	850,427

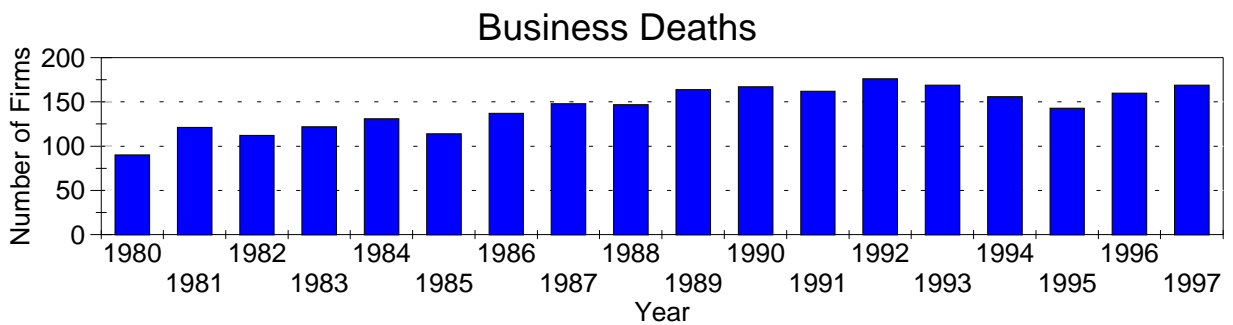
A=0-19, B=20-99, C=100-249, D=figures withheld, E=250-499,
 F=500-999, G=1,000-2,499, H=2,500-4,999, I=5,000-9,999,
 J=10,000-24,999, K=25,000-49,999, L=50,000-99,999, M=100,000 or more

*Ag. Services, Forestry & Fisheries include only non-farm businesses.

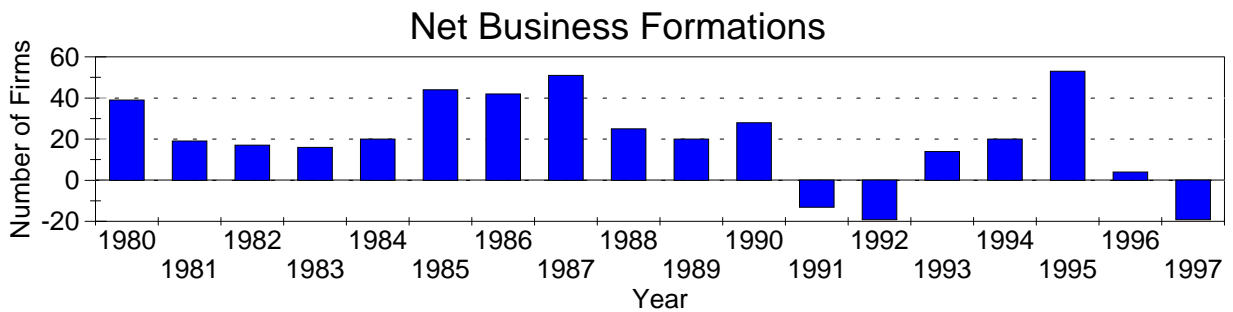
Business Statistics



Business starts and business deaths are determined from workers compensation records.



Business starts less business deaths equal net business formations.



Business Starts

Year	Number of Firms
1980	129
1981	140
1982	129
1983	138
1984	151
1985	158
1986	179
1987	199
1988	172
1989	184
1990	195
1991	149
1992	157
1993	183
1994	176
1995	196
1996	164
1997	150

Business Deaths

Year	Number of Firms
1980	90
1981	121
1982	112
1983	122
1984	131
1985	114
1986	137
1987	148
1988	147
1989	164
1990	167
1991	162
1992	176
1993	169
1994	156
1995	143
1996	160
1997	169

Net Business Formations

Year	Number of Firms
1980	39
1981	19
1982	17
1983	16
1984	20
1985	44
1986	42
1987	51
1988	25
1989	20
1990	28
1991	-13
1992	-19
1993	14
1994	20
1995	53
1996	4
1997	-19

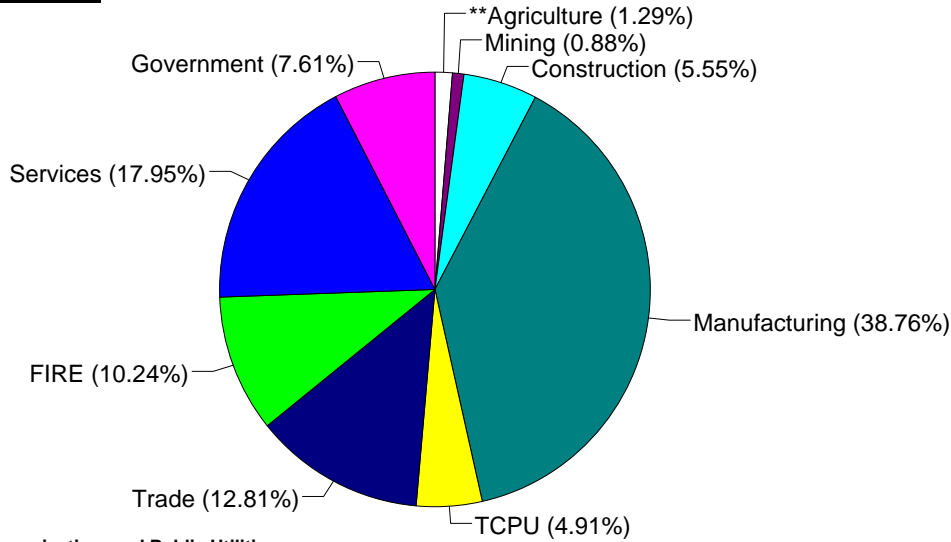
Source: Components of Business Change, Ohio Department of Development, Office of Strategic Research

Economic Structure

Total Value Added:
\$1,854.70 million.

Value Added by Sector (1993)*

Value Added is a broad measure of income that includes employee compensations, business profits, and returns to property, plant, and equipment.



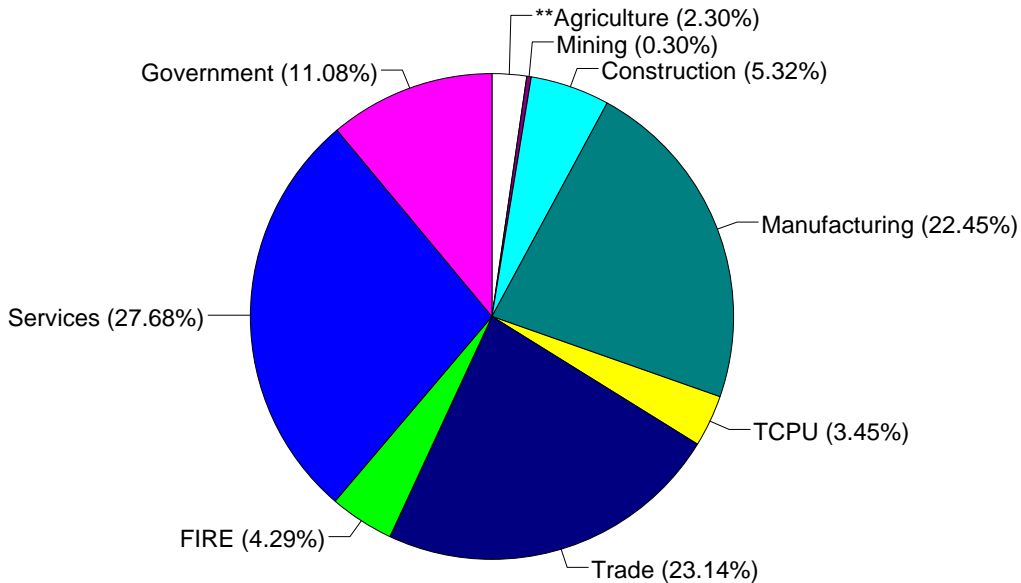
TCPU=Transportation, Communication, and Public Utilities.
FIRE=Finance, Insurance, and Real Estate.

*These estimates include many components not reported in other sources such as farms, self-employed, and small firms.

**Agriculture/Fishing/Forestry sector includes production agriculture (farm), agricultural services, forestry, and fishing enterprises.

Total Employment:
45,716 workers.

1993 Employment by Sector*



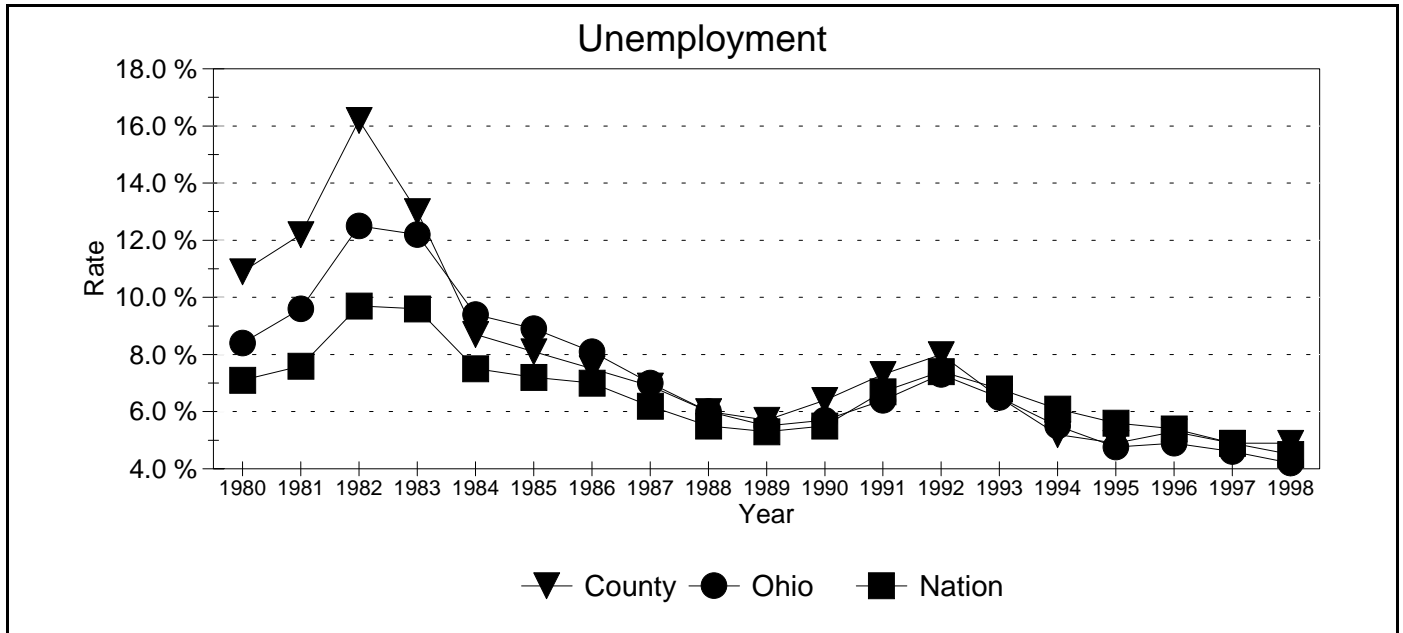
TCPU=Transportation, Communication, and Public Utilities.
FIRE=Finance, Insurance, and Real Estate.

*These estimates include many components not reported in other sources such as farms, self-employed, and small firms.

**Agriculture/Fishing/Forestry sector includes production agriculture (farm), agricultural services, forestry, and fishing enterprises.

Source: 1993 IMPLAN database, Minnesota Implan Group. IMPLAN is a non-survey regional input-output account generator originally developed by the U.S. Forest Service. These estimates provide a full picture of the county's economy.

Unemployment Statistics



Source: Bureau of Labor Statistics

Commuting Statistics

Residents retained in Erie County:
26,373.

Residents of Neighboring Counties Working in Erie County, 1990

County of Residence	Number of Incommuters
Huron	3,093
Lorain	1,521
Sandusky	1,370
Ottawa	914
Seneca	280
Cuyahoga	133
Lucas	82

Residents of Erie County Working in Neighboring Counties, 1990

County of Work	Number of Outcommuters
Lorain	3,537
Huron	1,765
Cuyahoga	875
Ottawa	725
Sandusky	497
Lucas	174
Richland	88

Source: U.S. Census Bureau, 1990 Census Summary Tape File S-5.