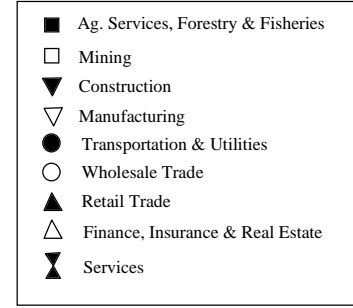
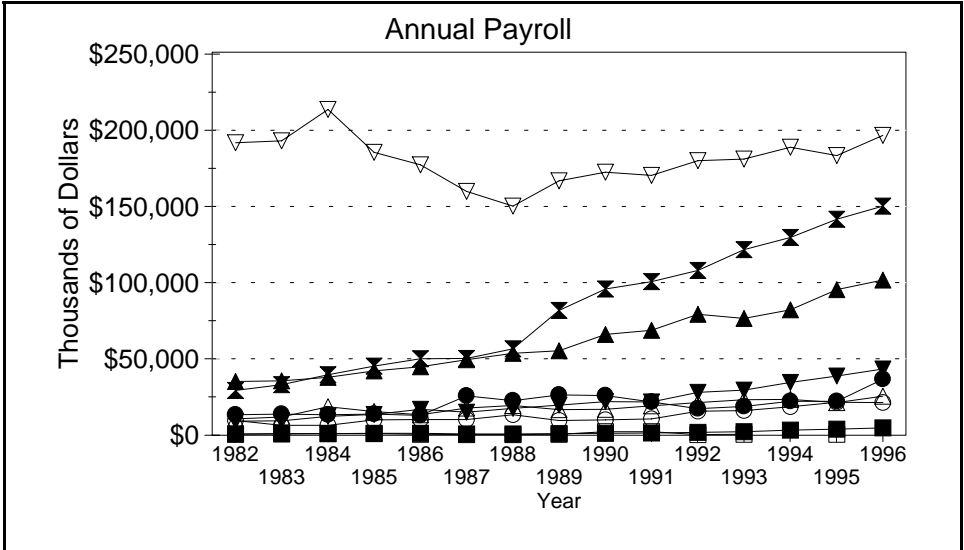
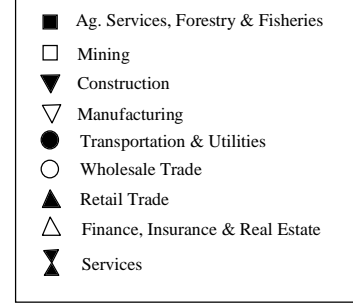
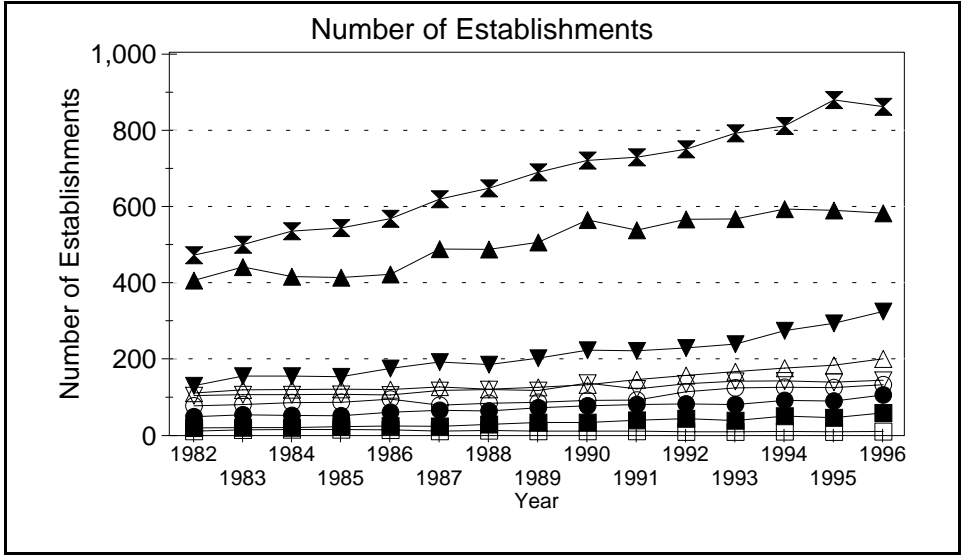
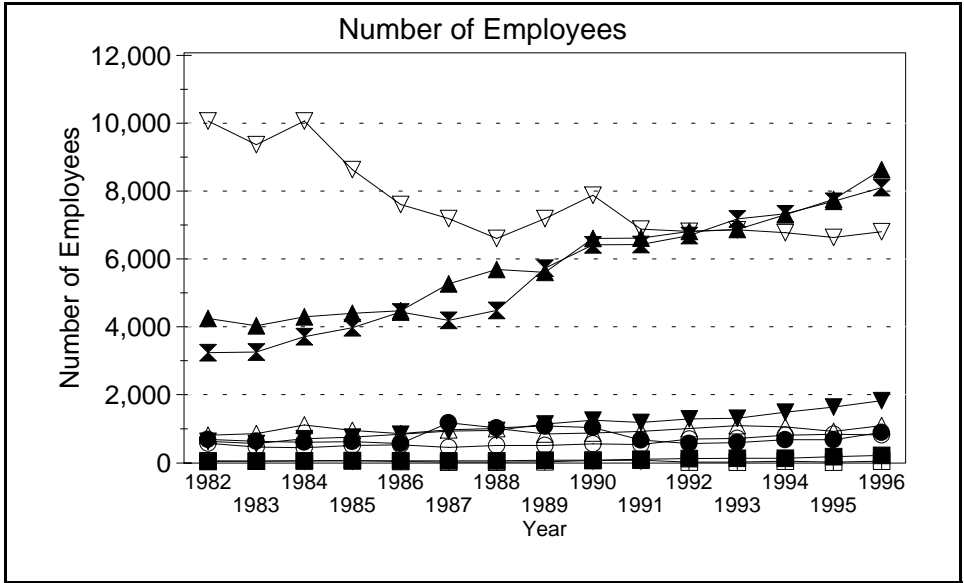


Business Statistics



Source: County Business Patterns, Ohio. These data are derived from all wage and salary employment covered by FICA which includes private non-farm employers and non-profit organizations, but does not include farms and the self employed.

Business Statistics

Number of Employees

Year	Ag. Services, Forestry, Fisheries*	Mining	Construction	Manufacturing	Transportation & Utilities	Wholesale Trade	Retail Trade	Finance, Insurance, Real Estate	Services	Not Classifiable	Total
1982	50	64	641	10,003	691	578	4,234	810	3,233	11	20,315
1983	54	53	567	9,311	641	466	4,015	862	3,249	100	19,318
1984	62	69	707	10,008	606	451	4,274	1,116	3,693	202	21,188
1985	64	73	762	8,586	624	511	4,385	957	3,962	338	20,262
1986	63	47	844	7,565	575	533	4,454	862	4,418	266	19,627
1987	64	28	933	7,152	1,175	459	5,241	978	4,178	56	20,264
1988	70	28	956	6,570	1,034	518	5,660	1,012	4,462	232	20,542
1989	82	36	1,144	7,152	1,088	514	5,579	851	5,704	238	22,388
1990	88	78	1,258	7,830	1,036	563	6,575	876	6,386	111	24,801
1991	111	80	1,193	6,842	677	547	6,576	927	6,397	51	23,401
1992	128	32	1,290	6,777	569	699	6,774	1,013	6,657	17	23,956
1993	143	30	1,313	6,824	596	717	6,830	1,098	7,145	30	24,726
1994	143	B	1,486	6,738	684	810	7,265	1,060	7,290	A	25,521
1995	187	29	1,636	6,600	684	845	7,715	929	7,653	24	26,302
1996	223	B	1,822	6,764	899	826	8,587	1,091	8,059	B	28,329

Number of Establishments

Year	Ag. Services, Forestry, Fisheries*	Mining	Construction	Manufacturing	Transportation & Utilities	Wholesale Trade	Retail Trade	Finance, Insurance, Real Estate	Services	Not Classifiable	Total
1982	20	12	130	104	49	78	405	111	471	17	1,397
1983	21	15	155	107	54	81	440	119	498	58	1,548
1984	21	16	155	107	53	86	415	120	533	119	1,625
1985	23	16	154	108	52	87	412	121	542	171	1,686
1986	25	15	175	106	61	95	421	120	566	157	1,741
1987	24	12	192	118	66	79	487	127	617	38	1,760
1988	29	13	185	120	64	84	486	121	645	149	1,896
1989	34	12	202	118	73	87	504	126	687	147	1,990
1990	34	12	223	137	78	92	563	133	718	86	2,076
1991	40	12	221	122	81	93	536	146	726	47	2,024
1992	44	10	229	135	83	114	564	157	747	22	2,105
1993	39	10	239	142	81	124	565	167	789	34	2,190
1994	51	11	274	143	92	126	591	176	808	13	2,285
1995	47	10	293	139	90	125	588	184	876	33	2,385
1996	59	11	324	144	106	133	580	200	858	20	2,435

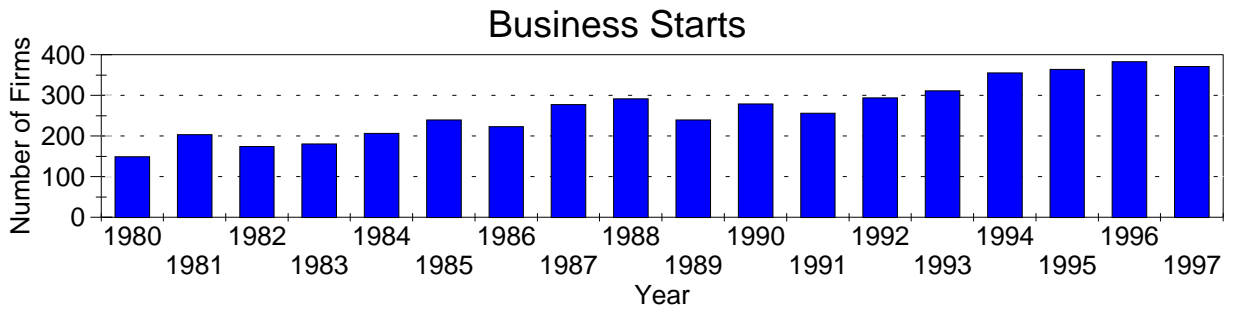
Annual Payroll (Thousands of Dollars)

Year	Ag. Services, Forestry, Fisheries*	Mining	Construction	Manufacturing	Transportation & Utilities	Wholesale Trade	Retail Trade	Finance, Insurance, Real Estate	Services	Not Classifiable	Total
1982	934	673	9,095	190,978	13,328	9,666	35,058	10,615	29,329	110	299,786
1983	1,102	890	9,357	192,148	13,837	6,502	35,579	11,960	33,026	1,585	305,985
1984	1,135	987	12,359	212,684	13,435	6,565	37,887	18,538	39,436	1,856	344,883
1985	1,151	1,065	13,506	184,563	13,878	10,002	41,987	15,505	45,117	2,392	329,165
1986	1,169	666	16,836	176,424	12,941	10,287	44,619	13,330	49,987	2,986	329,245
1987	772	489	15,119	159,107	25,634	10,321	49,327	17,804	50,204	531	329,308
1988	902	475	17,529	149,577	22,644	13,442	53,382	19,463	56,317	3,794	337,525
1989	1,045	549	19,552	166,042	26,377	9,644	55,053	16,630	81,455	3,878	380,225
1990	1,281	2,394	21,956	171,668	25,911	10,129	65,692	16,946	95,383	1,652	413,012
1991	1,440	2,315	21,677	169,527	21,749	10,621	68,440	19,284	100,266	829	416,148
1992	1,910	515	27,972	179,279	17,330	15,706	78,983	21,336	107,650	322	451,003
1993	2,315	591	29,350	180,289	18,889	16,028	76,181	23,245	121,151	229	468,268
1994	3,245	D	34,505	187,886	22,211	18,586	81,822	23,484	129,138	D	501,603
1995	3,892	633	38,701	182,475	22,155	21,444	95,113	21,371	140,964	384	527,132
1996	4,789	D	43,284	195,721	36,616	21,322	101,334	25,544	149,510	D	579,268

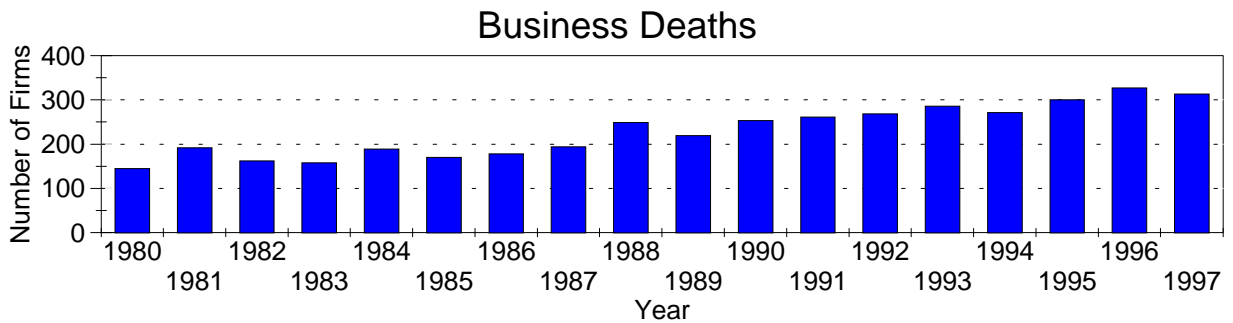
A=0-19, B=20-99, C=100-249, D=figures withheld, E=250-499,
 F=500-999, G=1,000-2,499, H=2,500-4,999, I=5,000-9,999,
 J=10,000-24,999, K=25,000-49,999, L=50,000-99,999, M=100,000 or more

*Ag. Services, Forestry & Fisheries include only non-farm businesses.

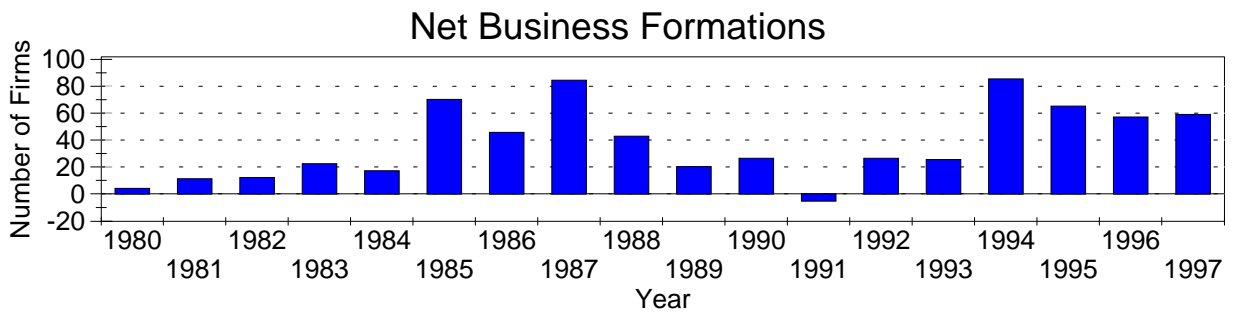
Business Statistics



Business starts and business deaths are determined from workers compensation records.



Business starts less business deaths equal net business formations.



Business Starts

Year	Number of Firms
1980	149
1981	203
1982	174
1983	180
1984	206
1985	239
1986	223
1987	277
1988	291
1989	239
1990	279
1991	256
1992	294
1993	311
1994	355
1995	364
1996	383
1997	371

Business Deaths

Year	Number of Firms
1980	145
1981	192
1982	162
1983	158
1984	189
1985	170
1986	178
1987	194
1988	249
1989	219
1990	253
1991	261
1992	268
1993	286
1994	271
1995	300
1996	327
1997	313

Net Business Formations

Year	Number of Firms
1980	4
1981	11
1982	12
1983	22
1984	17
1985	69
1986	45
1987	83
1988	42
1989	20
1990	26
1991	-5
1992	26
1993	25
1994	84
1995	64
1996	56
1997	58

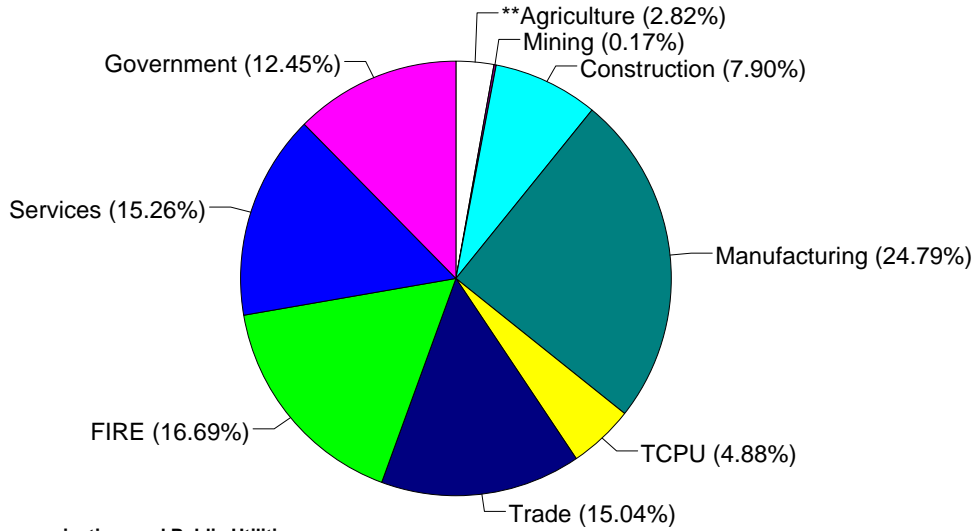
Source: Components of Business Change, Ohio Department of Development, Office of Strategic Research

Economic Structure

Total Value Added:
\$1,497.79 million.

Value Added by Sector (1993)*

Value Added is a broad measure of income that includes employee compensations, business profits, and returns to property, plant, and equipment.



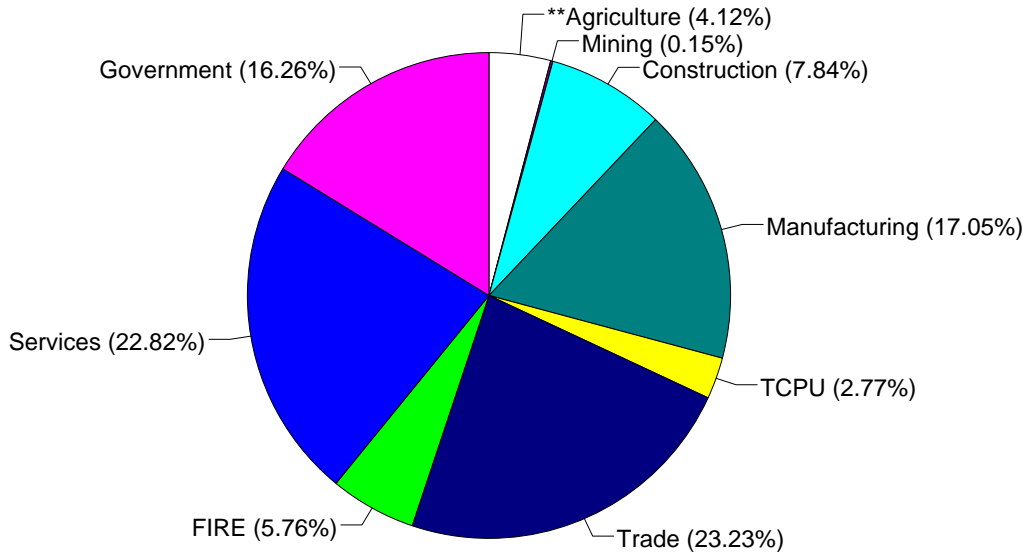
TCPU=Transportation, Communication, and Public Utilities.
FIRE=Finance, Insurance, and Real Estate.

*These estimates include many components not reported in other sources such as farms, self-employed, and small firms.

**Agriculture/Fishing/Forestry sector includes production agriculture (farm), agricultural services, forestry, and fishing enterprises.

Total Employment:
41,294 workers.

1993 Employment by Sector*



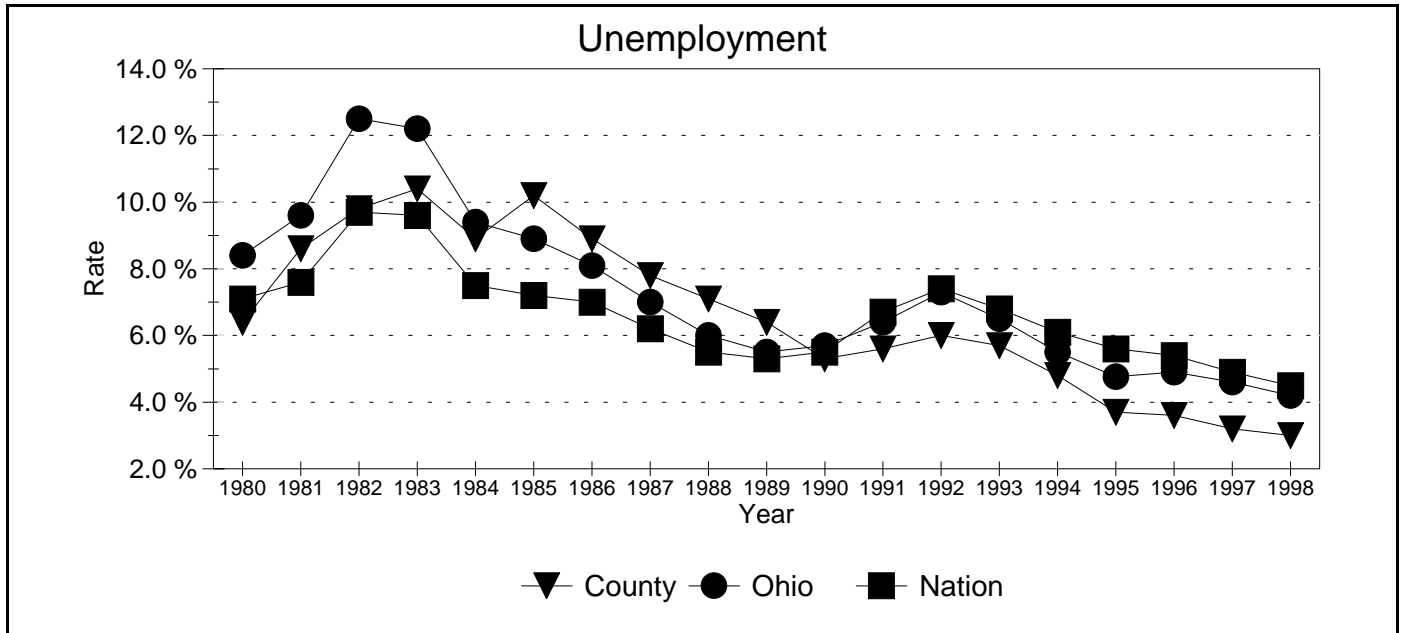
TCPU=Transportation, Communication, and Public Utilities.
FIRE=Finance, Insurance, and Real Estate.

*These estimates include many components not reported in other sources such as farms, self-employed, and small firms.

**Agriculture/Fishing/Forestry sector includes production agriculture (farm), agricultural services, forestry, and fishing enterprises.

Source: 1993 IMPLAN database, Minnesota Implan Group. IMPLAN is a non-survey regional input-output account generator originally developed by the U.S. Forest Service. These estimates provide a full picture of the county's economy.

Unemployment Statistics



Source: Bureau of Labor Statistics

Commuting Statistics

Residents retained in Fairfield County: 23,055.

Residents of Neighboring Counties Working in Fairfield County, 1990

County of Residence	Number of Incommuters
Franklin	1,971
Perry	1,293
Hocking	1,222
Licking	587
Pickaway	270
Muskingum	143
Athens	142

Residents of Fairfield County Working in Neighboring Counties, 1990

County of Work	Number of Outcommuters
Franklin	20,693
Licking	1,173
Pickaway	849
Hocking	378
Perry	268
Athens	176
Ross	131

Source: U.S. Census Bureau, 1990 Census Summary Tape File S-5.