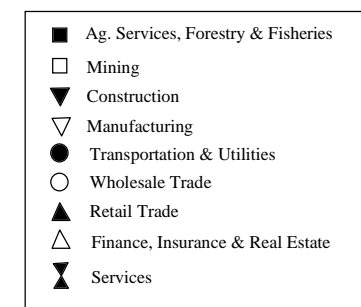
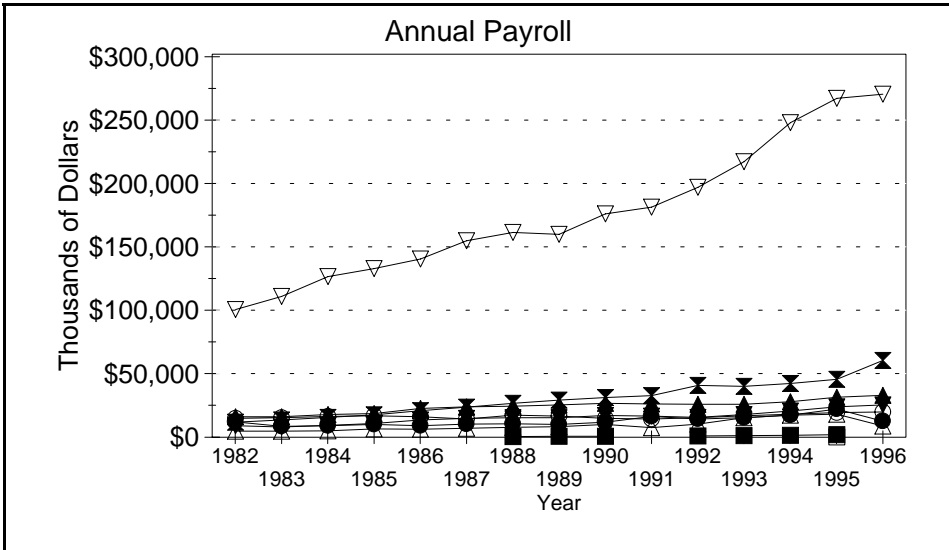
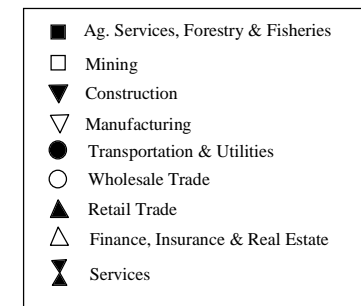
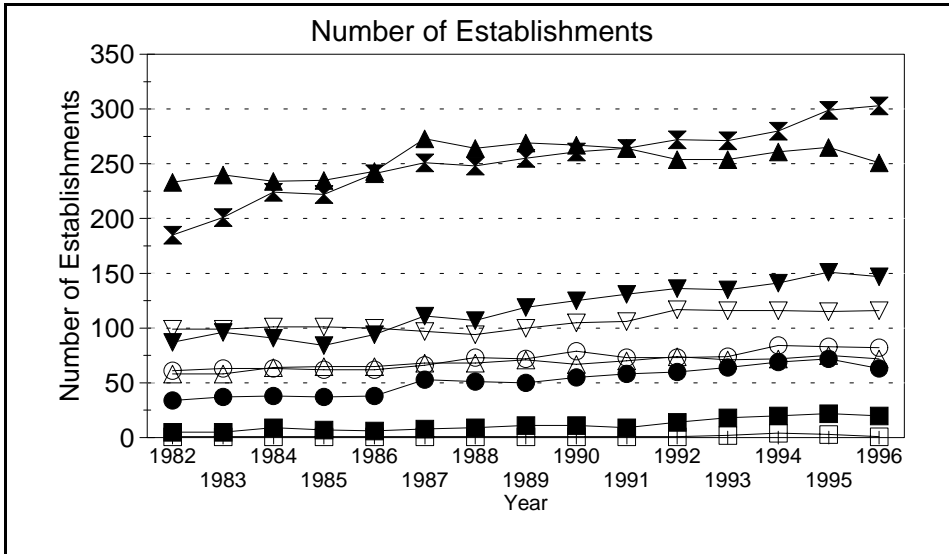
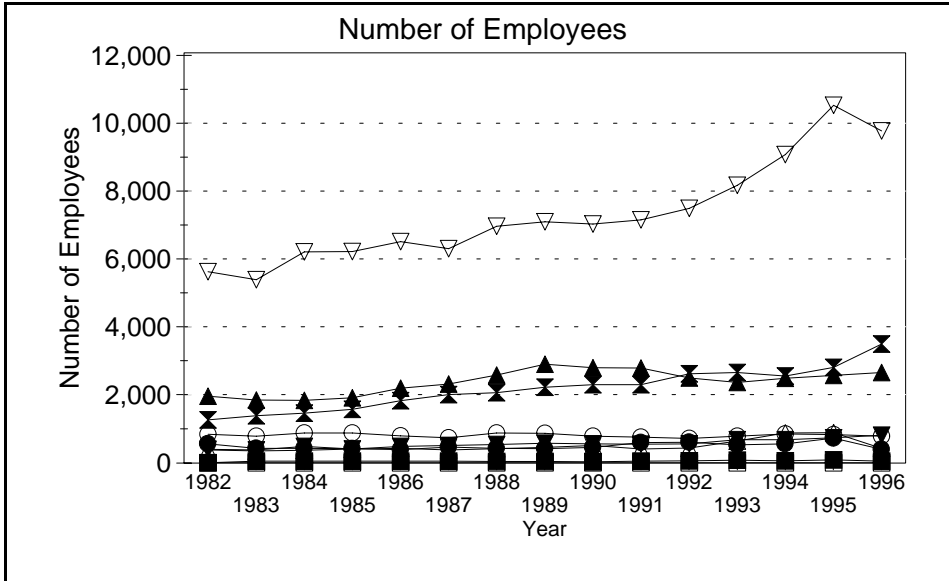


Business Statistics



Source: County Business Patterns, Ohio. These data are derived from all wage and salary employment covered by FICA which includes private non-farm employers and non-profit organizations, but does not include farms and the self employed.

Business Statistics

Number of Employees

Year	Ag. Services, Forestry, Fisheries*	Mining	Construction	Manufacturing	Transportation & Utilities	Wholesale Trade	Retail Trade	Finance, Insurance, Real Estate	Services	Not Classifiable	Total
1982	A	A	406	5,601	566	840	1,958	382	1,264	9	11,045
1983	B	A	387	5,366	434	786	1,842	359	1,388	26	10,615
1984	B	A	487	6,178	432	880	1,837	372	1,457	B	11,774
1985	B	A	413	6,187	423	881	1,908	415	1,570	C	11,947
1986	B	A	486	6,481	390	795	2,191	429	1,829	79	12,716
1987	B	A	517	6,269	466	737	2,314	387	2,007	17	12,751
1988	45	A	544	6,931	434	876	2,574	419	2,057	B	13,942
1989	47	A	580	7,054	421	870	2,888	457	2,221	C	14,650
1990	40	A	566	6,993	460	786	2,786	512	2,290	A	14,454
1991	B	A	550	7,113	603	754	2,776	416	2,297	33	14,583
1992	67	A	562	7,452	604	720	2,488	438	2,607	A	14,940
1993	80	A	682	8,122	532	789	2,361	645	2,653	A	15,881
1994	65	A	682	9,021	560	853	2,484	879	2,546	B	17,145
1995	95	9	741	10,469	727	835	2,569	888	2,795	40	19,168
1996	B	A	815	9,714	404	787	2,652	431	3,482	A	18,361

Number of Establishments

Year	Ag. Services, Forestry, Fisheries*	Mining	Construction	Manufacturing	Transportation & Utilities	Wholesale Trade	Retail Trade	Finance, Insurance, Real Estate	Services	Not Classifiable	Total
1982	5	1	87	99	34	61	233	58	185	7	770
1983	5	1	96	99	37	63	240	58	201	21	821
1984	9	1	91	101	38	63	234	64	224	55	880
1985	7	1	84	101	37	62	235	65	222	68	882
1986	6	1	94	100	38	62	243	65	241	59	909
1987	8	1	111	97	53	66	273	68	251	13	941
1988	9	1	107	94	51	73	264	68	248	52	967
1989	11	1	119	100	50	72	269	71	255	47	995
1990	11	1	125	105	55	79	267	67	261	29	1,000
1991	9	1	131	106	58	73	264	70	264	23	999
1992	14	1	136	117	60	73	254	74	272	7	1,008
1993	18	2	135	116	64	74	254	71	271	13	1,018
1994	20	4	141	116	69	84	261	72	280	3	1,050
1995	22	3	151	115	72	83	265	75	299	6	1,091
1996	20	1	147	116	63	82	251	72	303	1	1,056

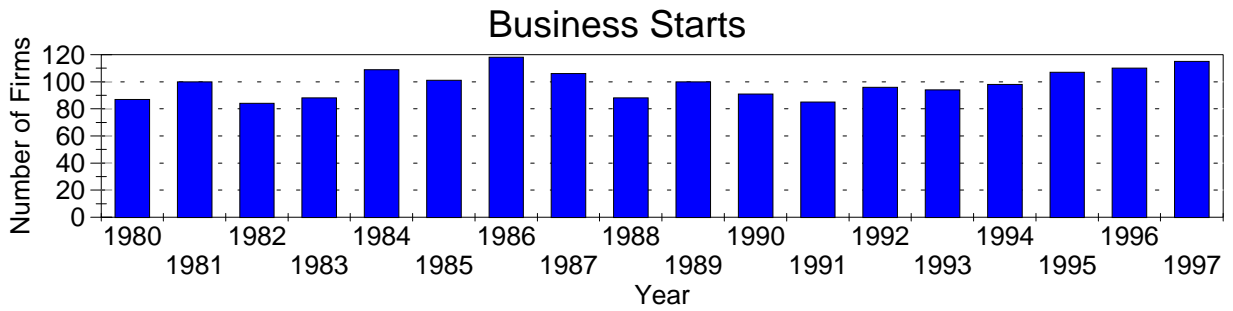
Annual Payroll (Thousands of Dollars)

Year	Ag. Services, Forestry, Fisheries*	Mining	Construction	Manufacturing	Transportation & Utilities	Wholesale Trade	Retail Trade	Finance, Insurance, Real Estate	Services	Not Classifiable	Total
1982	D	D	8,915	99,949	12,012	14,725	16,148	4,691	11,805	59	168,629
1983	D	D	7,950	110,393	8,602	15,256	16,097	4,696	13,540	320	177,254
1984	D	D	9,178	125,931	9,033	16,267	17,700	4,964	15,489	D	200,096
1985	D	D	10,700	132,196	9,958	16,769	18,623	6,538	17,618	D	213,996
1986	D	D	13,451	139,588	9,142	15,922	22,572	6,221	20,783	986	229,285
1987	D	D	14,805	153,970	10,261	14,213	23,728	6,939	23,657	686	248,943
1988	586	D	15,219	160,287	10,531	17,221	24,294	7,690	26,464	D	263,393
1989	659	D	15,383	158,924	9,939	16,475	25,389	8,374	28,988	D	265,349
1990	638	D	16,935	175,022	11,671	14,898	26,611	10,139	31,199	D	287,553
1991	D	D	16,581	180,160	16,400	14,198	26,100	7,468	32,568	208	294,492
1992	913	D	15,652	195,863	14,315	15,360	25,938	10,400	40,612	D	319,202
1993	1,241	D	17,758	215,791	15,404	16,758	25,938	15,350	39,850	D	348,471
1994	1,415	D	20,507	246,259	17,188	18,141	27,826	17,301	42,219	D	391,241
1995	2,020	260	23,830	265,299	22,136	19,198	31,355	17,928	45,260	76	427,362
1996	D	D	25,429	268,740	12,578	19,878	32,708	8,771	60,110	D	429,835

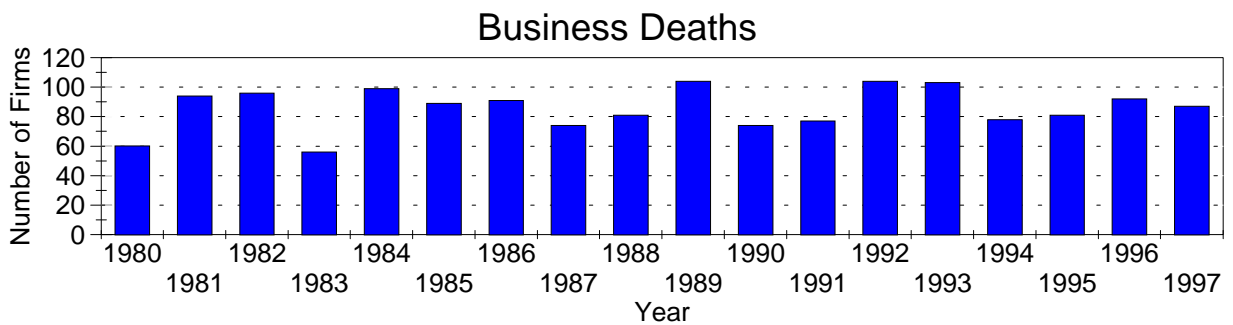
A=0-19, B=20-99, C=100-249, D=figures withheld, E=250-499,
 F=500-999, G=1,000-2,499, H=2,500-4,999, I=5,000-9,999,
 J=10,000-24,999, K=25,000-49,999, L=50,000-99,999, M=100,000 or more

*Ag. Services, Forestry & Fisheries include only non-farm businesses.

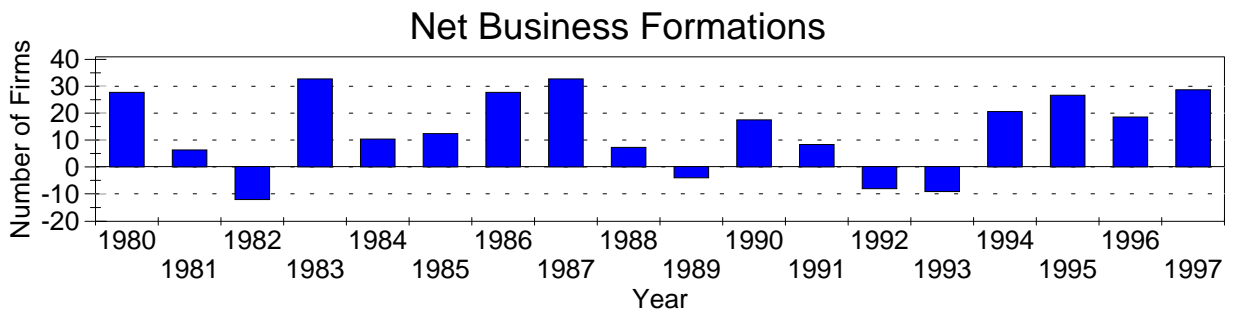
Business Statistics



Business starts and business deaths are determined from workers compensation records.



Business starts less business deaths equal net business formations.



Business Starts

Year	Number of Firms
1980	87
1981	100
1982	84
1983	88
1984	109
1985	101
1986	118
1987	106
1988	88
1989	100
1990	91
1991	85
1992	96
1993	94
1994	98
1995	107
1996	110
1997	115

Business Deaths

Year	Number of Firms
1980	60
1981	94
1982	96
1983	56
1984	99
1985	89
1986	91
1987	74
1988	81
1989	104
1990	74
1991	77
1992	104
1993	103
1994	78
1995	81
1996	92
1997	87

Net Business Formations

Year	Number of Firms
1980	27
1981	6
1982	-12
1983	32
1984	10
1985	12
1986	27
1987	32
1988	7
1989	-4
1990	17
1991	8
1992	-8
1993	-9
1994	20
1995	26
1996	18
1997	28

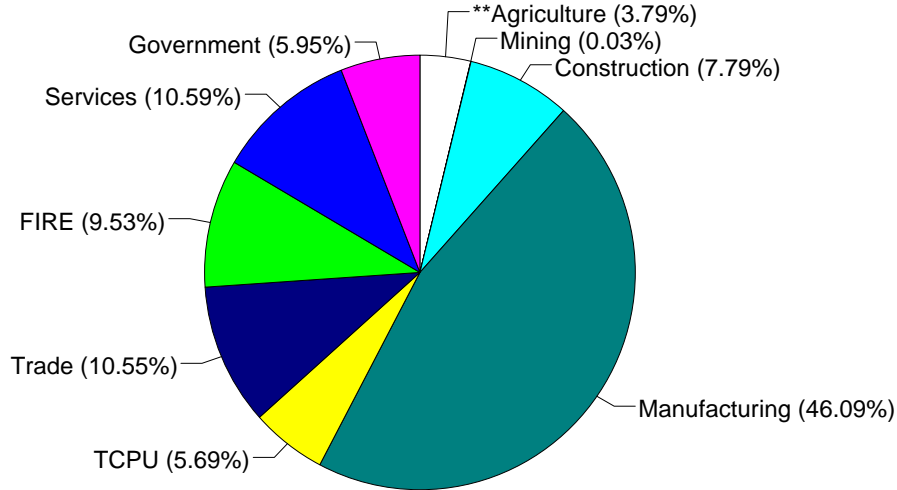
Source: Components of Business Change, Ohio Department of Development, Office of Strategic Research

Economic Structure

Total Value Added:
\$902.27 million.

Value Added by Sector (1993)*

Value Added is a broad measure of income that includes employee compensations, business profits, and returns to property, plant, and equipment.



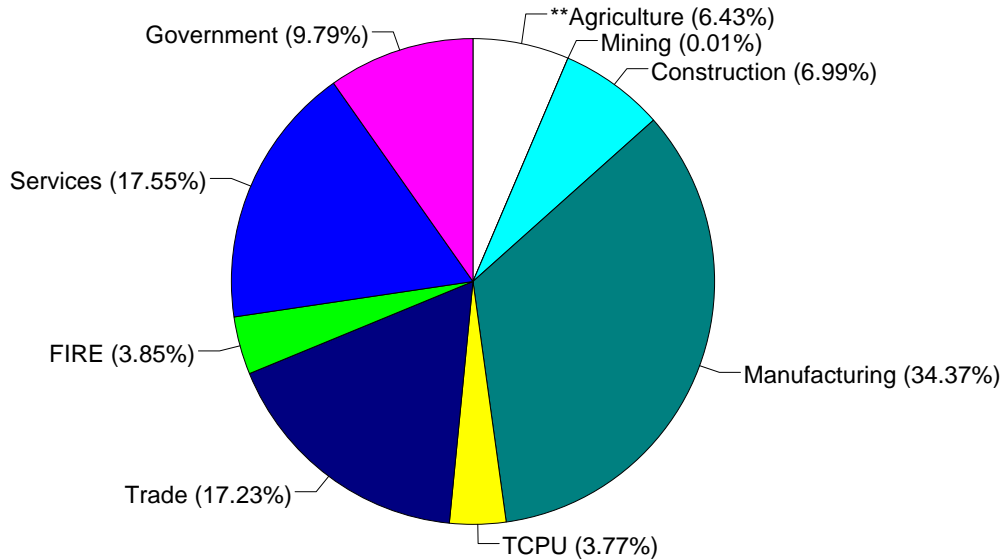
TCPU=Transportation, Communication, and Public Utilities.
FIRE=Finance, Insurance, and Real Estate.

*These estimates include many components not reported in other sources such as farms, self-employed, and small firms.

**Agriculture/Fishing/Forestry sector includes production agriculture (farm), agricultural services, forestry, and fishing enterprises.

Total Employment:
22,439 workers.

1993 Employment by Sector*



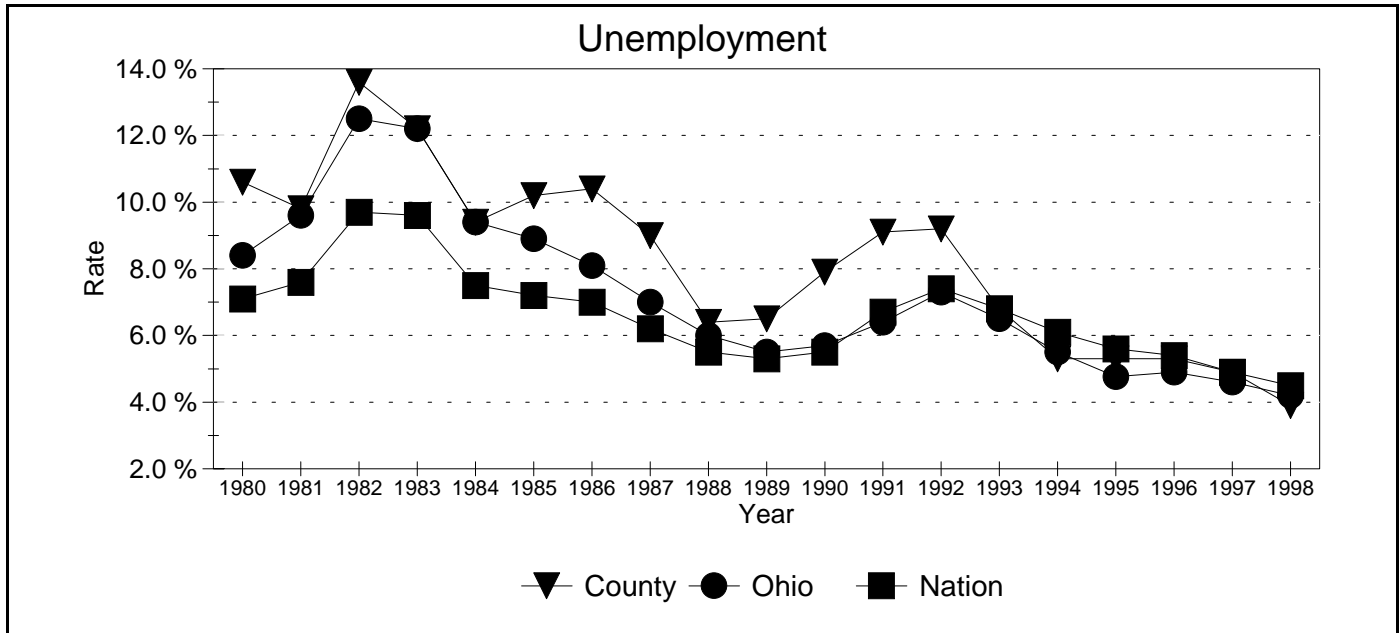
TCPU=Transportation, Communication, and Public Utilities.
FIRE=Finance, Insurance, and Real Estate.

*These estimates include many components not reported in other sources such as farms, self-employed, and small firms.

**Agriculture/Fishing/Forestry sector includes production agriculture (farm), agricultural services, forestry, and fishing enterprises.

Source: 1993 IMPLAN database, Minnesota Implan Group. IMPLAN is a non-survey regional input-output account generator originally developed by the U.S. Forest Service. These estimates provide a full picture of the county's economy.

Unemployment Statistics



Source: Bureau of Labor Statistics

Commuting Statistics

Residents retained in Fulton County:
11,738.

Residents of Neighboring Counties Working in Fulton County, 1990

County of Residence	Number of Incommuters
Henry	1,468
Lucas	1,279
Williams	1,253
Defiance	601
Lenawee (MI)	521
Hillsdale (MI)	153
Wood	69

Residents of Fulton County Working in Neighboring Counties, 1990

County of Work	Number of Outcommuters
Lucas	4,120
Henry	657
Williams	535
Lenawee (MI)	320
Wood	287
Defiance	154
Washtenaw (MI)	38

Source: U.S. Census Bureau, 1990 Census Summary Tape File S-5.