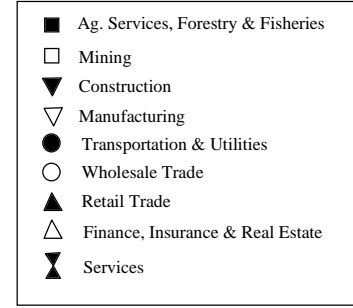
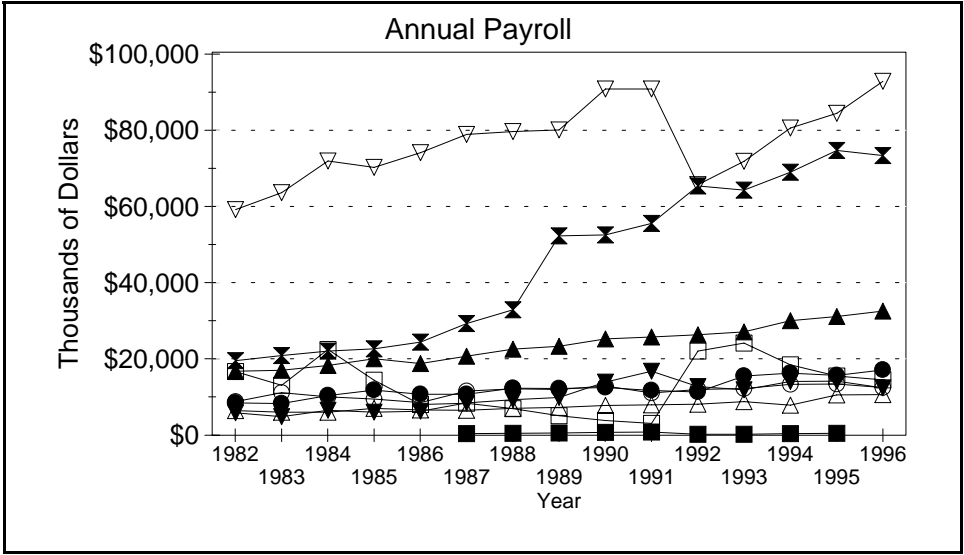
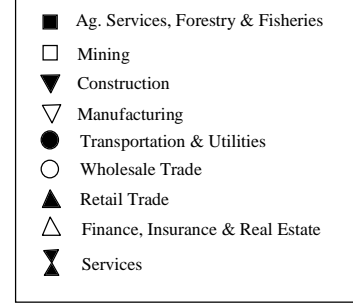
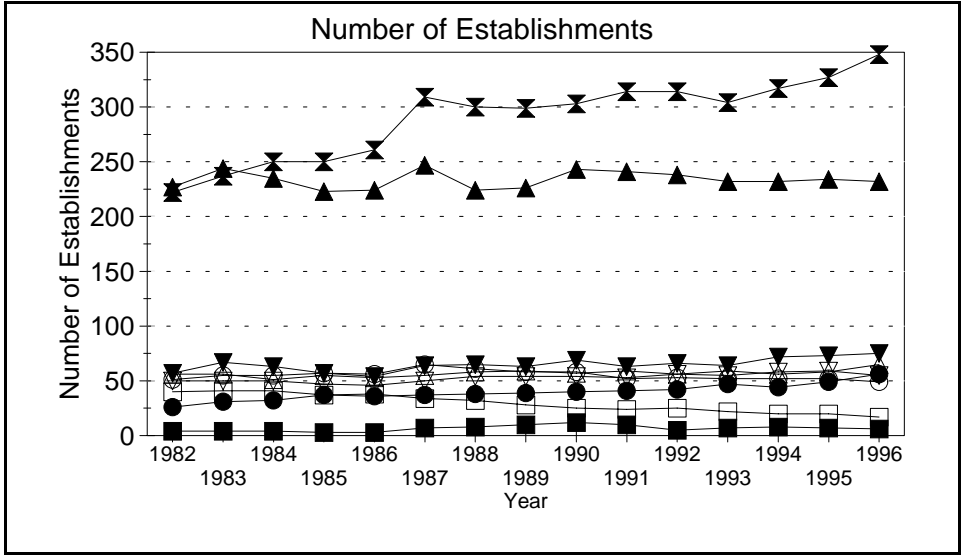
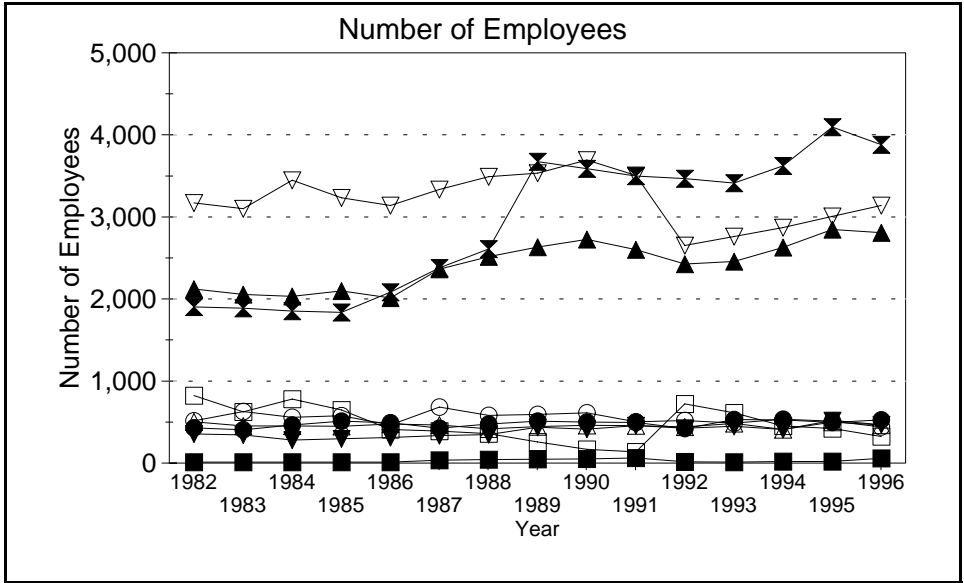


Business Statistics



Source: County Business Patterns, Ohio. These data are derived from all wage and salary employment covered by FICA which includes private non-farm employers and non-profit organizations, but does not include farms and the self employed.

Business Statistics

Number of Employees

Year	Ag. Services, Forestry, Fisheries*	Mining	Construction	Manufacturing	Transportation & Utilities	Wholesale Trade	Retail Trade	Finance, Insurance, Real Estate	Services	Not Classifiable	Total
1982	A	823	354	3,172	430	515	2,122	502	1,903	A	9,831
1983	A	624	345	3,102	407	628	2,056	453	1,888	B	9,545
1984	A	781	281	3,446	464	559	2,033	452	1,851	C	9,986
1985	A	648	296	3,232	510	576	2,099	447	1,838	C	9,798
1986	A	410	311	3,139	492	466	2,013	476	2,082	B	9,495
1987	36	390	335	3,334	427	682	2,365	466	2,380	32	10,447
1988	41	357	349	3,490	474	582	2,517	419	2,610	68	10,907
1989	47	258	436	3,533	512	592	2,634	443	3,673	115	12,243
1990	50	168	412	3,694	498	614	2,726	459	3,588	21	12,230
1991	61	135	458	3,506	494	505	2,600	457	3,498	11	11,725
1992	17	722	424	2,653	423	518	2,425	439	3,467	0	11,088
1993	13	614	448	2,762	532	487	2,456	485	3,412	7	11,216
1994	20	451	410	2,869	528	535	2,627	410	3,624	6	11,480
1995	19	423	519	3,006	496	510	2,849	499	4,097	3	12,421
1996	B	324	467	3,140	527	440	2,809	463	3,881	A	12,081

Number of Establishments

Year	Ag. Services, Forestry, Fisheries*	Mining	Construction	Manufacturing	Transportation & Utilities	Wholesale Trade	Retail Trade	Finance, Insurance, Real Estate	Services	Not Classifiable	Total
1982	4	40	57	50	26	51	227	56	222	8	741
1983	4	41	67	50	31	55	244	56	237	19	804
1984	4	41	63	50	32	55	235	51	250	68	849
1985	3	37	57	47	37	57	223	55	250	76	842
1986	3	38	54	46	36	56	224	53	261	50	821
1987	7	34	64	50	37	65	247	55	309	23	891
1988	8	32	65	54	38	61	224	58	300	71	911
1989	10	28	63	54	39	58	226	59	299	49	885
1990	12	25	69	54	40	58	243	57	303	35	896
1991	10	24	63	53	41	52	241	59	314	18	875
1992	5	25	66	56	42	53	238	56	314	10	865
1993	7	22	64	55	47	52	232	59	304	11	853
1994	8	20	72	58	44	52	232	56	317	8	867
1995	7	20	73	59	49	52	234	58	327	9	888
1996	6	17	75	55	56	49	232	65	348	2	905

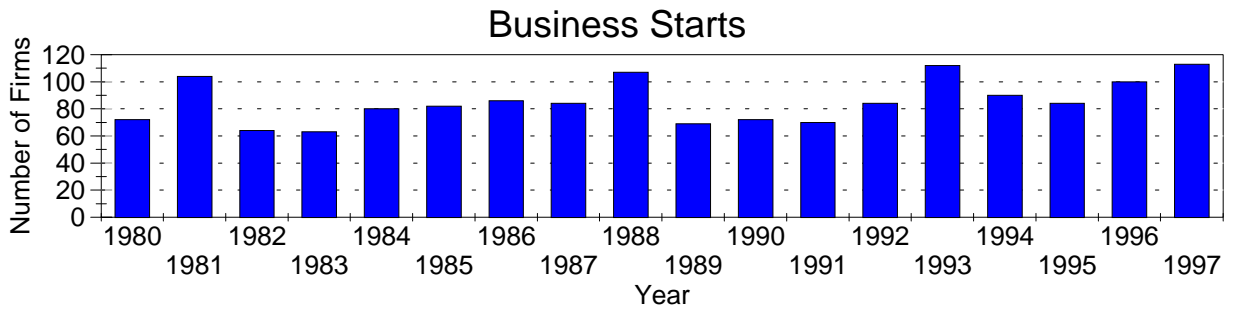
Annual Payroll (Thousands of Dollars)

Year	Ag. Services, Forestry, Fisheries*	Mining	Construction	Manufacturing	Transportation & Utilities	Wholesale Trade	Retail Trade	Finance, Insurance, Real Estate	Services	Not Classifiable	Total
1982	D	16,607	5,857	58,860	8,419	8,810	16,707	6,437	19,425	D	141,270
1983	D	13,071	4,821	63,333	8,294	11,114	16,998	6,023	20,773	D	144,803
1984	D	22,410	6,484	71,585	10,383	10,001	18,251	6,053	21,982	D	167,872
1985	D	14,328	6,033	69,887	11,809	9,436	19,957	6,978	22,519	D	162,369
1986	D	8,058	6,240	73,760	10,720	8,490	18,714	6,585	24,300	D	157,850
1987	410	8,335	8,396	78,536	10,707	11,557	20,619	6,527	29,159	381	174,627
1988	489	6,941	9,282	79,301	12,262	12,135	22,460	7,017	32,777	1,617	184,281
1989	605	5,100	9,824	79,661	12,185	11,956	23,195	7,241	52,058	1,434	203,259
1990	754	3,859	13,833	90,360	12,456	12,879	25,126	7,773	52,302	445	219,787
1991	844	3,096	16,672	90,410	11,664	11,061	25,627	7,912	55,293	228	222,807
1992	255	21,977	12,689	65,390	11,311	11,917	26,195	8,121	65,038	58	222,951
1993	292	24,037	11,827	71,543	15,444	12,190	26,969	8,803	63,990	112	235,207
1994	457	18,385	14,068	80,164	16,232	13,266	29,888	7,869	68,686	62	249,077
1995	462	15,455	14,101	84,039	15,594	13,366	30,962	10,564	74,343	71	258,957
1996	D	14,416	12,397	92,383	17,056	12,486	32,418	10,584	73,013	D	265,346

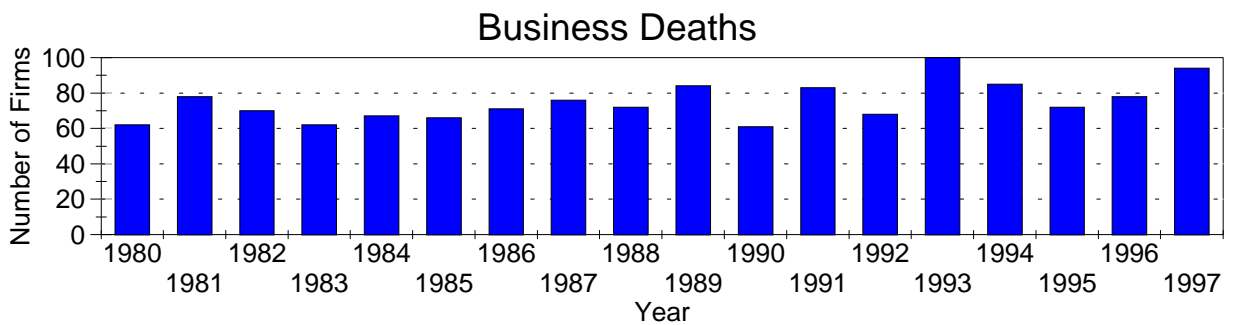
A=0-19, B=20-99, C=100-249, D=figures withheld, E=250-499,
 F=500-999, G=1,000-2,499, H=2,500-4,999, I=5,000-9,999,
 J=10,000-24,999, K=25,000-49,999, L=50,000-99,999, M=100,000 or more

*Ag. Services, Forestry & Fisheries include only non-farm businesses.

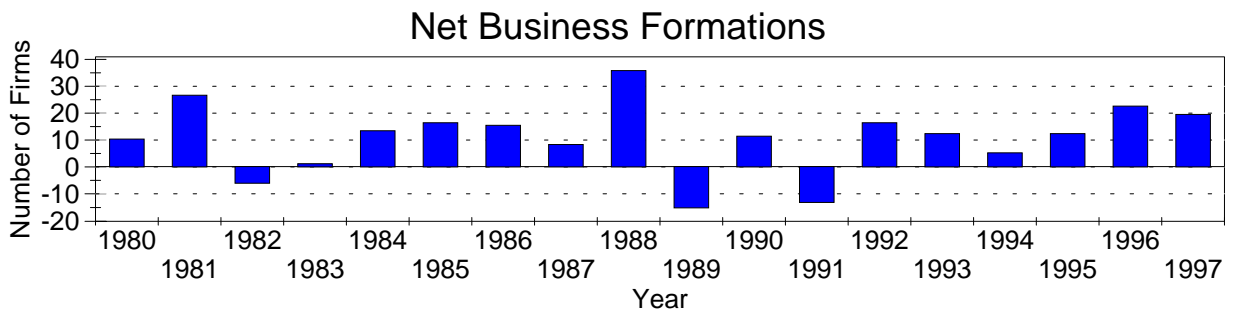
Business Statistics



Business starts and business deaths are determined from workers compensation records.



Business starts less business deaths equal net business formations.



Business Starts

Year	Number of Firms
1980	72
1981	104
1982	64
1983	63
1984	80
1985	82
1986	86
1987	84
1988	107
1989	69
1990	72
1991	70
1992	84
1993	112
1994	90
1995	84
1996	100
1997	113

Business Deaths

Year	Number of Firms
1980	62
1981	78
1982	70
1983	62
1984	67
1985	66
1986	71
1987	76
1988	72
1989	84
1990	61
1991	83
1992	68
1993	100
1994	85
1995	72
1996	78
1997	94

Net Business Formations

Year	Number of Firms
1980	10
1981	26
1982	-6
1983	1
1984	13
1985	16
1986	15
1987	8
1988	35
1989	-15
1990	11
1991	-13
1992	16
1993	12
1994	5
1995	12
1996	22
1997	19

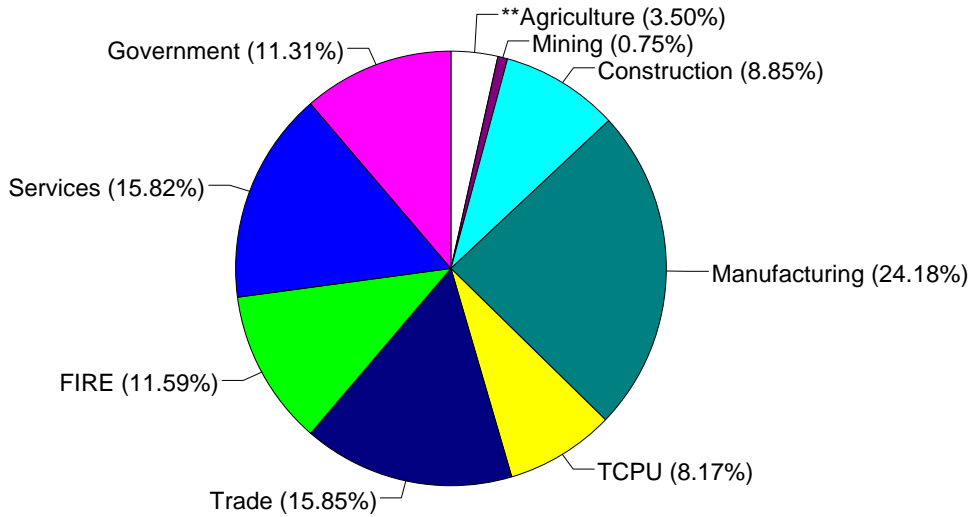
Source: Components of Business Change, Ohio Department of Development, Office of Strategic Research

Economic Structure

Total Value Added:
\$592.00 million.

Value Added by Sector (1993)*

Value Added is a broad measure of income that includes employee compensations, business profits, and returns to property, plant, and equipment.



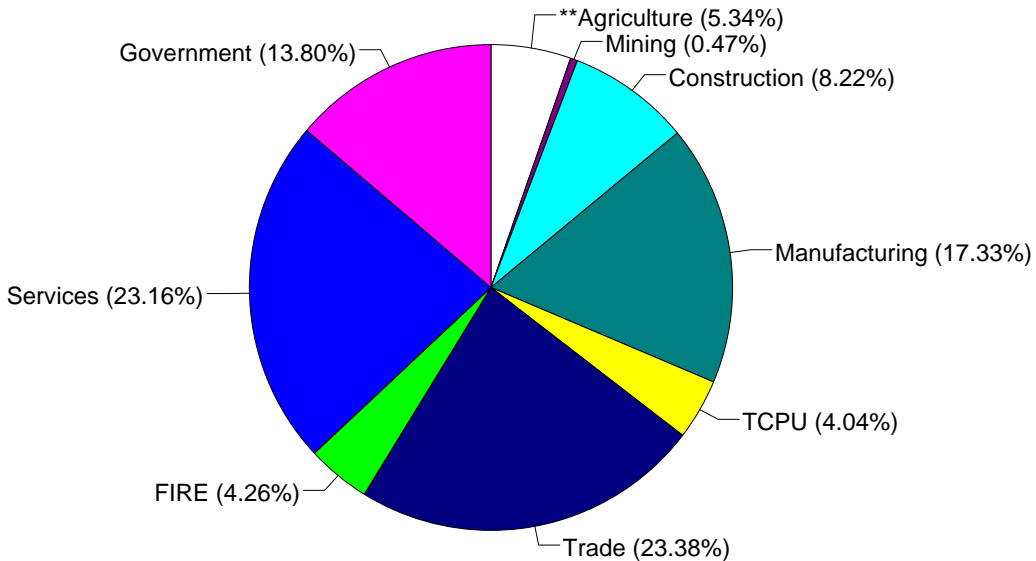
TCPU=Transportation, Communication, and Public Utilities.
FIRE=Finance, Insurance, and Real Estate.

*These estimates include many components not reported in other sources such as farms, self-employed, and small firms.

**Agriculture/Fishing/Forestry sector includes production agriculture (farm), agricultural services, forestry, and fishing enterprises.

Total Employment:
17,074 workers.

1993 Employment by Sector*



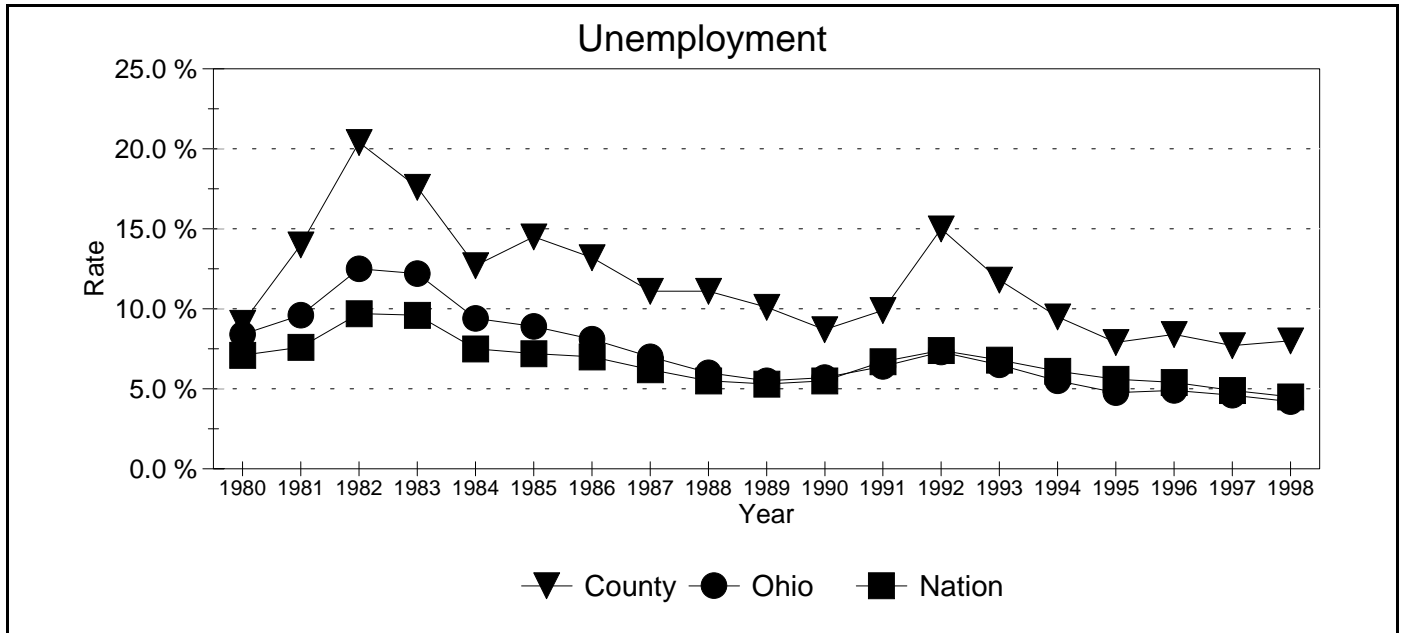
TCPU=Transportation, Communication, and Public Utilities.
FIRE=Finance, Insurance, and Real Estate.

*These estimates include many components not reported in other sources such as farms, self-employed, and small firms.

**Agriculture/Fishing/Forestry sector includes production agriculture (farm), agricultural services, forestry, and fishing enterprises.

Source: 1993 IMPLAN database, Minnesota Implan Group. IMPLAN is a non-survey regional input-output account generator originally developed by the U.S. Forest Service. These estimates provide a full picture of the county's economy.

Unemployment Statistics



Source: Bureau of Labor Statistics

Commuting Statistics

Residents retained in Guernsey County: 12,587.

Residents of Neighboring Counties Working in Guernsey County, 1990

County of Residence	Number of Incommuters
Noble	974
Muskingum	966
Belmont	300
Morgan	169
Tuscarawas	150
Perry	65
Washington	65

Residents of Guernsey County Working in Neighboring Counties, 1990

County of Work	Number of Outcommuters
Muskingum	929
Tuscarawas	319
Belmont	279
Noble	224
Franklin	152
Harrison	108
Coshocton	88

Source: U.S. Census Bureau, 1990 Census Summary Tape File S-5.