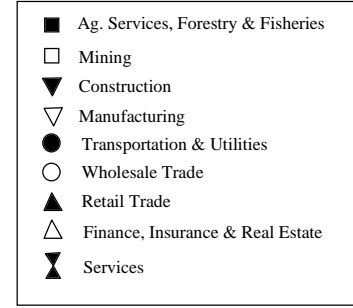
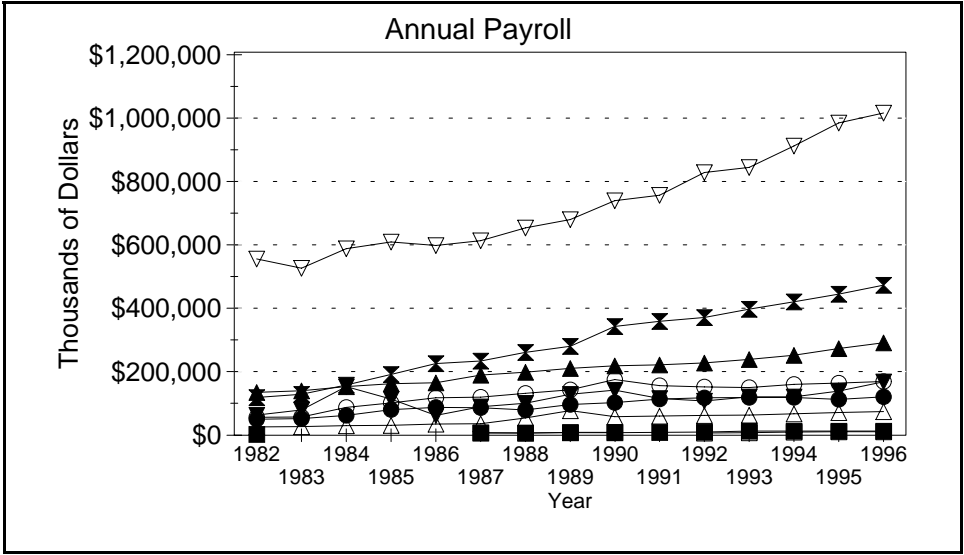
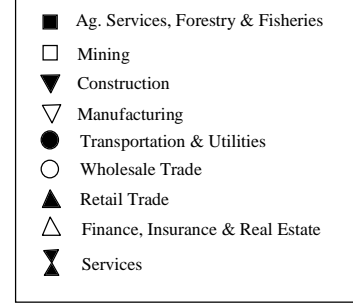
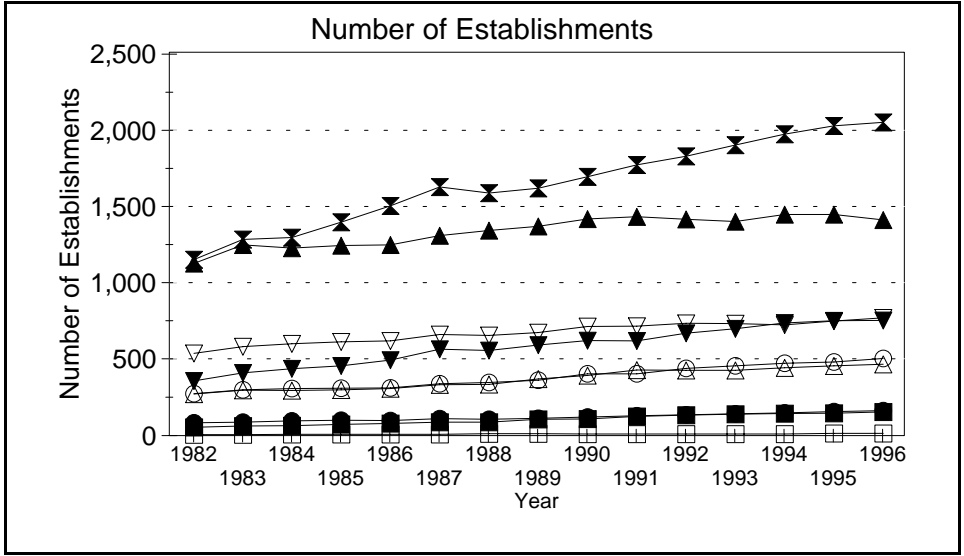
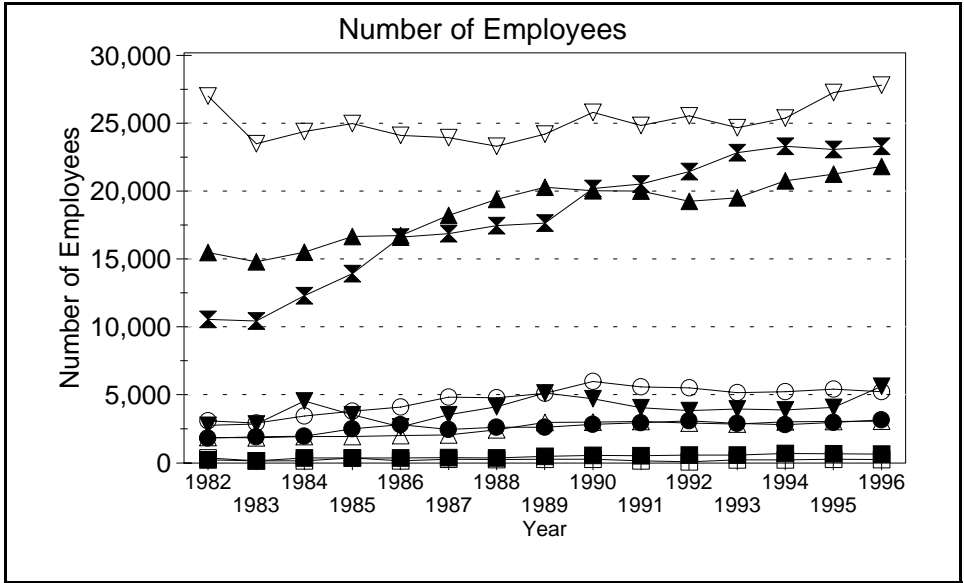


Business Statistics



Source: County Business Patterns, Ohio. These data are derived from all wage and salary employment covered by FICA which includes private non-farm employers and non-profit organizations, but does not include farms and the self employed.

Business Statistics

Number of Employees

Year	Ag. Services, Forestry, Fisheries*	Mining	Construction	Manufacturing	Transportation & Utilities	Wholesale Trade	Retail Trade	Finance, Insurance, Real Estate	Services	Not Classifiable	Total
1982	242	E	2,766	26,841	1,835	3,085	15,387	1,877	10,515	B	62,852
1983	C	C	2,852	23,356	1,908	2,935	14,725	1,841	10,394	163	58,567
1984	E	C	4,529	24,240	1,974	3,442	15,425	1,937	12,232	587	64,840
1985	E	E	3,544	24,824	2,499	3,797	16,562	1,933	13,851	640	68,201
1986	E	C	2,637	23,951	2,804	4,101	16,640	2,017	16,532	558	69,836
1987	402	278	3,542	23,803	2,459	4,828	18,122	2,057	16,789	108	72,388
1988	386	253	4,129	23,176	2,621	4,781	19,291	2,435	17,359	388	74,819
1989	497	282	5,118	24,066	2,617	5,112	20,177	2,982	17,556	742	79,149
1990	556	282	4,710	25,639	2,832	5,972	19,909	2,995	20,078	250	83,223
1991	549	C	4,051	24,694	2,946	5,580	19,889	3,042	20,397	C	81,437
1992	582	105	3,848	25,381	3,099	5,493	19,133	2,927	21,319	25	81,912
1993	579	229	3,951	24,530	2,910	5,151	19,411	2,860	22,689	54	82,364
1994	713	231	3,874	25,229	2,802	5,219	20,649	3,022	23,165	43	84,947
1995	678	282	4,069	27,101	2,968	5,416	21,138	3,039	22,938	71	87,700
1996	666	257	5,623	27,631	3,150	5,229	21,701	3,057	23,160	10	90,484

Number of Establishments

Year	Ag. Services, Forestry, Fisheries*	Mining	Construction	Manufacturing	Transportation & Utilities	Wholesale Trade	Retail Trade	Finance, Insurance, Real Estate	Services	Not Classifiable	Total
1982	55	6	356	536	83	273	1,123	271	1,148	58	3,936
1983	62	6	409	581	88	299	1,243	296	1,279	170	4,433
1984	65	8	437	598	96	306	1,222	295	1,292	257	4,576
1985	72	8	454	612	101	309	1,240	298	1,391	340	4,825
1986	79	8	493	617	99	311	1,244	306	1,498	323	4,978
1987	88	9	563	659	111	339	1,304	331	1,622	95	5,121
1988	88	12	555	654	106	346	1,337	333	1,582	284	5,297
1989	106	12	591	672	112	361	1,364	369	1,613	290	5,490
1990	108	11	620	712	120	403	1,413	392	1,689	164	5,632
1991	125	11	617	714	130	403	1,427	427	1,765	102	5,721
1992	133	10	667	733	136	438	1,411	426	1,821	45	5,820
1993	139	10	696	731	141	454	1,397	426	1,894	46	5,934
1994	143	11	735	723	148	471	1,443	442	1,966	33	6,115
1995	146	15	750	748	156	481	1,441	454	2,020	35	6,246
1996	154	15	751	768	163	502	1,406	466	2,044	13	6,282

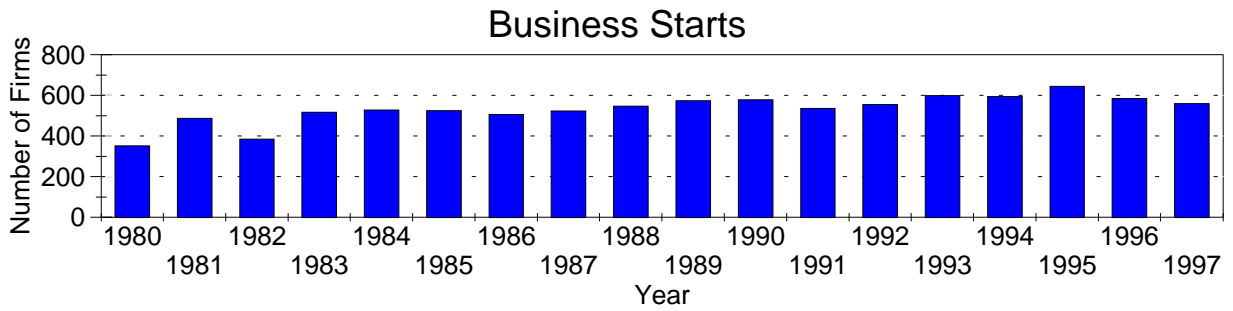
Annual Payroll (Thousands of Dollars)

Year	Ag. Services, Forestry, Fisheries*	Mining	Construction	Manufacturing	Transportation & Utilities	Wholesale Trade	Retail Trade	Finance, Insurance, Real Estate	Services	Not Classifiable	Total
1982	3,177	D	63,053	552,862	50,613	56,018	134,696	25,714	118,641	D	1,011,538
1983	D	D	79,350	523,430	51,901	56,827	139,623	26,817	128,104	3,509	1,016,967
1984	D	D	152,690	584,696	62,348	87,141	151,966	30,385	157,486	8,058	1,245,071
1985	D	D	113,299	605,657	80,663	101,661	161,847	31,301	190,084	11,839	1,308,553
1986	D	D	62,447	594,749	87,007	117,355	164,711	35,420	224,366	15,687	1,314,916
1987	6,913	7,585	89,608	609,460	85,896	119,015	188,045	36,113	232,186	2,370	1,377,191
1988	6,654	7,253	99,870	650,118	79,039	131,743	197,118	54,532	259,278	10,149	1,495,754
1989	8,143	8,530	128,744	676,183	96,687	142,508	209,314	76,796	278,936	12,924	1,638,765
1990	8,364	9,357	141,293	734,621	102,362	174,256	217,644	58,518	341,112	5,450	1,792,977
1991	9,049	D	115,758	751,882	112,984	154,892	220,449	60,187	357,048	D	1,791,534
1992	10,397	6,633	107,092	822,638	116,876	151,605	226,296	62,168	369,044	535	1,873,284
1993	12,634	8,264	120,107	838,832	118,435	149,442	237,694	62,676	394,527	933	1,943,544
1994	13,093	10,069	120,523	906,434	117,801	158,914	250,844	66,876	418,443	868	2,063,865
1995	13,001	10,576	138,099	978,778	111,946	162,996	271,391	71,198	442,477	575	2,201,037
1996	12,545	11,147	166,927	1,009,335	120,400	168,491	289,311	74,580	470,069	138	2,322,943

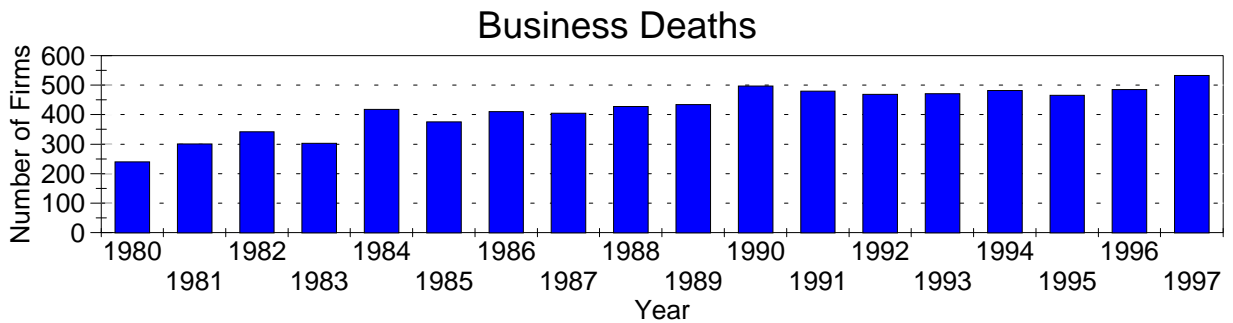
A=0-19, B=20-99, C=100-249, D=figures withheld, E=250-499,
 F=500-999, G=1,000-2,499, H=2,500-4,999, I=5,000-9,999,
 J=10,000-24,999, K=25,000-49,999, L=50,000-99,999, M=100,000 or more

*Ag. Services, Forestry & Fisheries include only non-farm businesses.

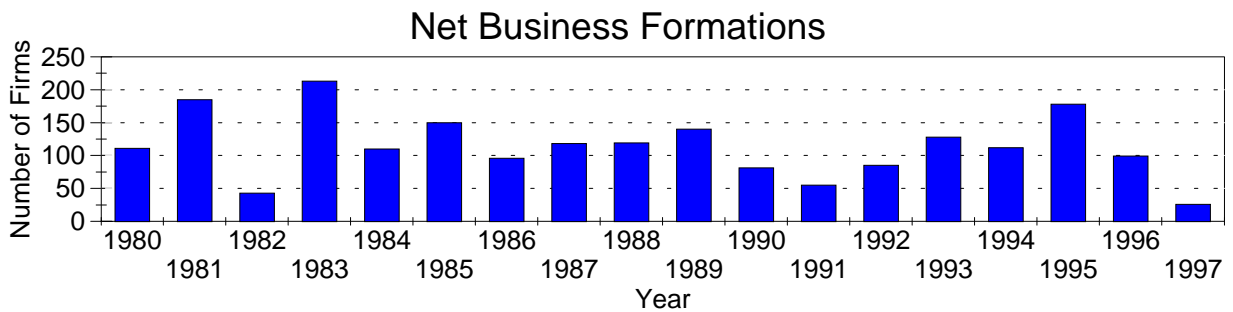
Business Statistics



Business starts and business deaths are determined from workers compensation records.



Business starts less business deaths equal net business formations.



Business Starts

Year	Number of Firms
1980	351
1981	486
1982	385
1983	516
1984	528
1985	525
1986	506
1987	523
1988	546
1989	574
1990	578
1991	535
1992	554
1993	599
1994	594
1995	644
1996	584
1997	559

Business Deaths

Year	Number of Firms
1980	240
1981	301
1982	342
1983	303
1984	418
1985	375
1986	410
1987	405
1988	427
1989	434
1990	497
1991	480
1992	469
1993	471
1994	482
1995	466
1996	485
1997	533

Net Business Formations

Year	Number of Firms
1980	111
1981	185
1982	43
1983	213
1984	110
1985	150
1986	96
1987	118
1988	119
1989	140
1990	81
1991	55
1992	85
1993	128
1994	112
1995	178
1996	99
1997	26

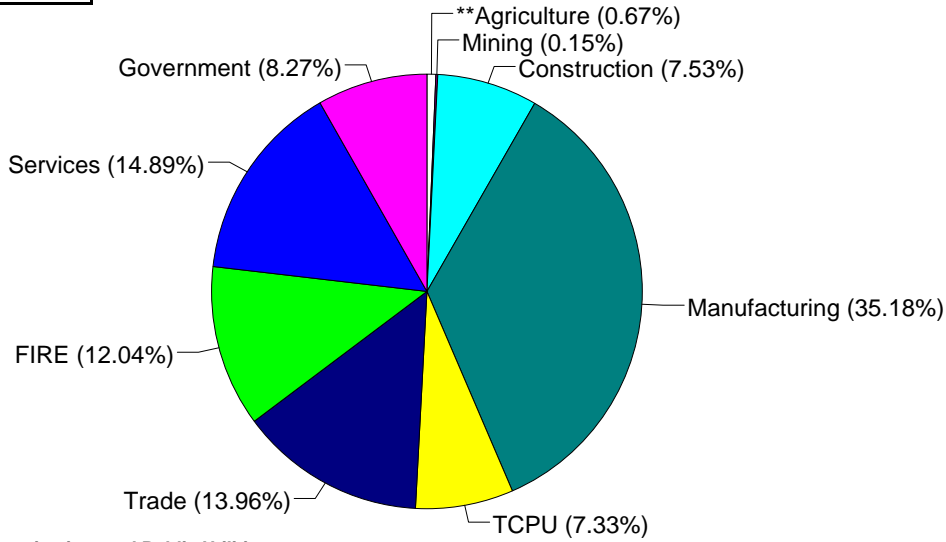
Source: Components of Business Change, Ohio Department of Development, Office of Strategic Research

Economic Structure

Total Value Added:
\$4,774.72 million.

Value Added by Sector (1993)*

Value Added is a broad measure of income that includes employee compensations, business profits, and returns to property, plant, and equipment.



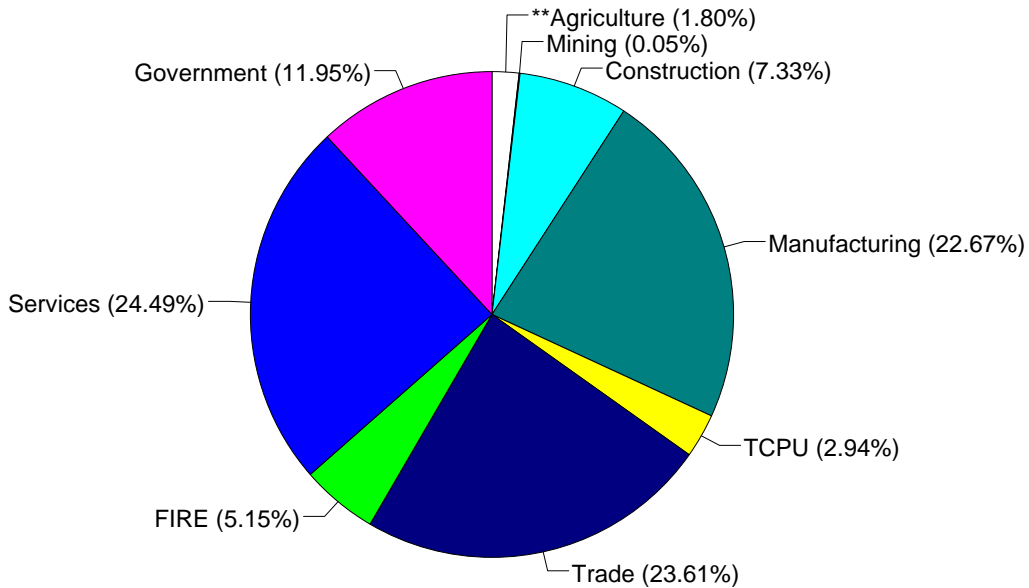
TCPU=Transportation, Communication, and Public Utilities.
FIRE=Finance, Insurance, and Real Estate.

*These estimates include many components not reported in other sources such as farms, self-employed, and small firms.

**Agriculture/Fishing/Forestry sector includes production agriculture (farm), agricultural services, forestry, and fishing enterprises.

Total Employment:
106,213 workers.

1993 Employment by Sector*



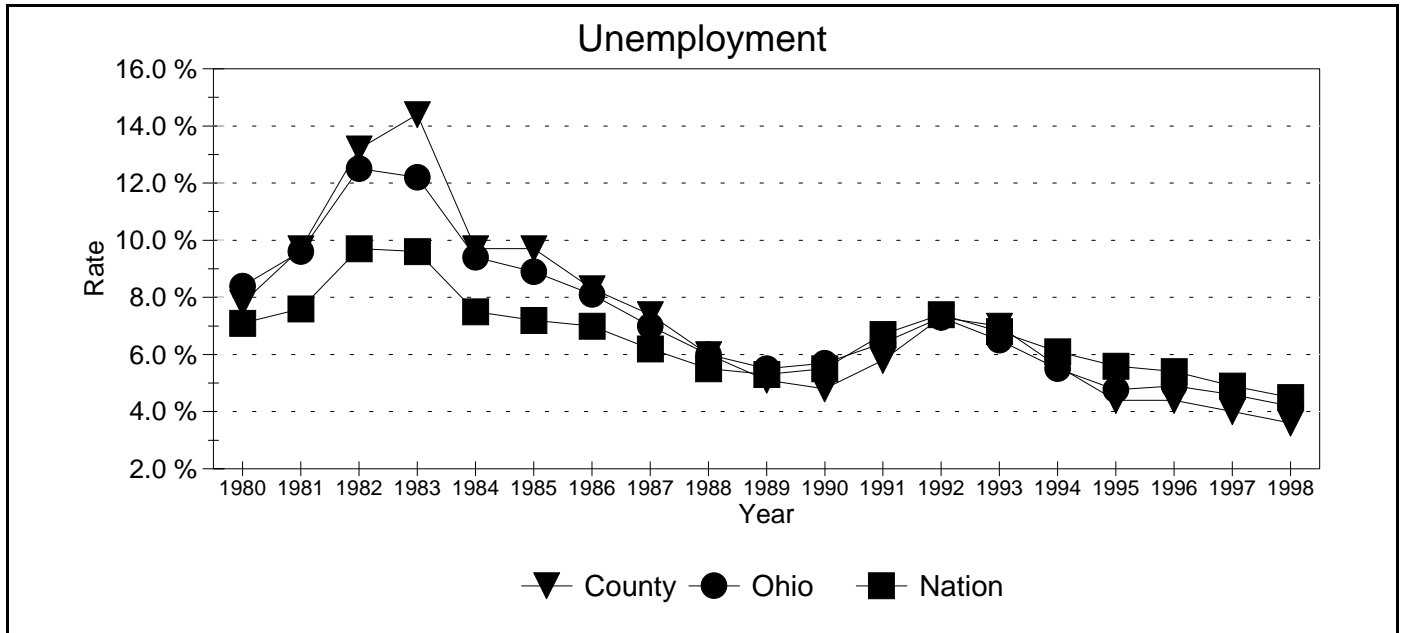
TCPU=Transportation, Communication, and Public Utilities.
FIRE=Finance, Insurance, and Real Estate.

*These estimates include many components not reported in other sources such as farms, self-employed, and small firms.

**Agriculture/Fishing/Forestry sector includes production agriculture (farm), agricultural services, forestry, and fishing enterprises.

Source: 1993 IMPLAN database, Minnesota Implan Group. IMPLAN is a non-survey regional input-output account generator originally developed by the U.S. Forest Service. These estimates provide a full picture of the county's economy.

Unemployment Statistics



Source: Bureau of Labor Statistics

Commuting Statistics

Residents retained in Lake County:
63,580.

Residents of Neighboring Counties Working in Lake County, 1990

County of Residence	Number of Incommuters
Cuyahoga	13,400
Ashtabula	4,297
Geauga	4,240
Summit	623
Portage	447
Medina	174
Lorain	155

Residents of Lake County Working in Neighboring Counties, 1990

County of Work	Number of Outcommuters
Cuyahoga	38,254
Geauga	2,016
Lorain	959
Ashtabula	902
Summit	495
Stark	207
Portage	148

Source: U.S. Census Bureau, 1990 Census Summary Tape File S-5.