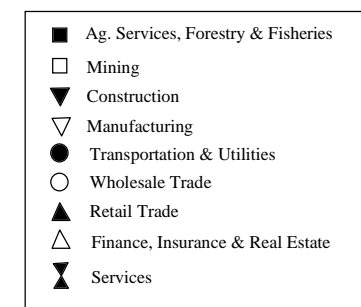
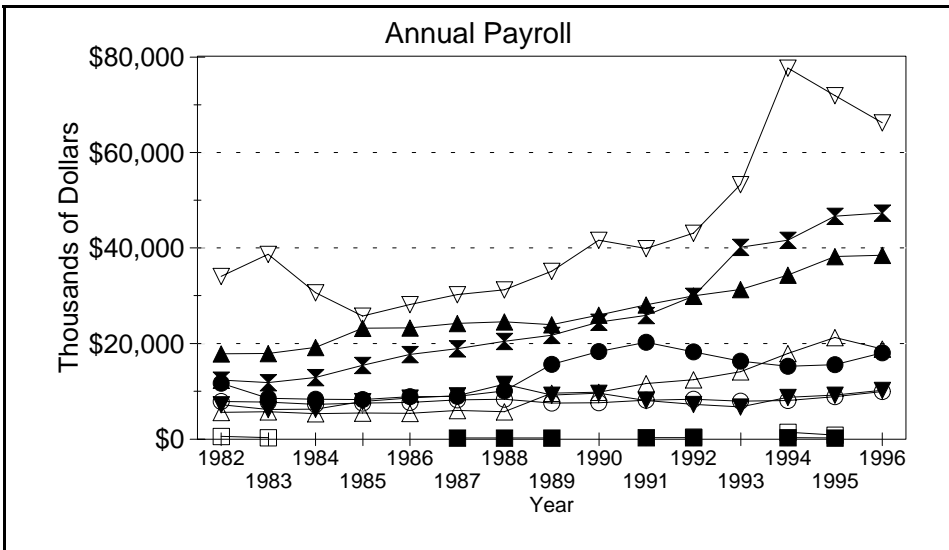
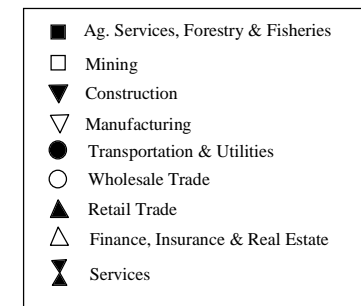
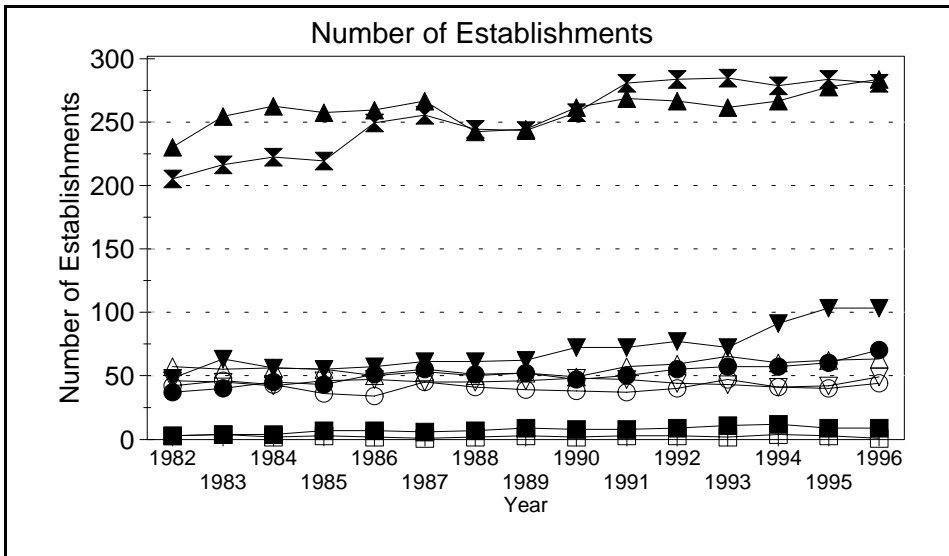
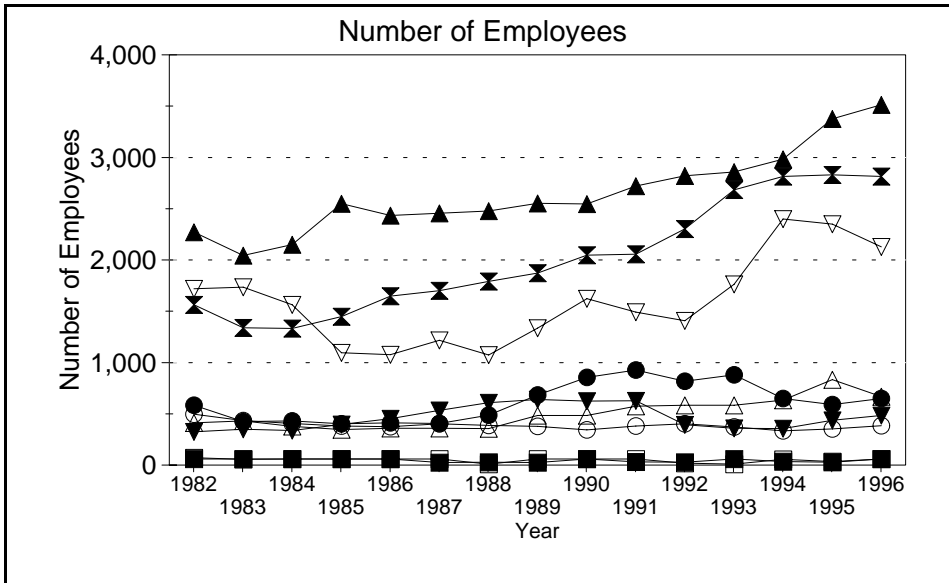


Business Statistics



Source: County Business Patterns, Ohio. These data are derived from all wage and salary employment covered by FICA which includes private non-farm employers and non-profit organizations, but does not include farms and the self employed.

Business Statistics

Number of Employees

Year	Ag. Services, Forestry, Fisheries*	Mining	Construction	Manufacturing	Transportation & Utilities	Wholesale Trade	Retail Trade	Finance, Insurance, Real Estate	Services	Not Classifiable	Total
1982	B	72	324	1,719	584	496	2,273	413	1,563	A	7,470
1983	B	55	348	1,734	424	434	2,044	431	1,337	A	6,846
1984	B	B	336	1,562	432	405	2,151	376	1,331	84	6,735
1985	B	B	395	1,095	404	380	2,548	345	1,449	103	6,824
1986	B	B	453	1,075	412	375	2,433	358	1,648	47	6,890
1987	26	B	532	1,217	407	401	2,456	359	1,700	B	7,173
1988	27	A	607	1,074	486	386	2,477	357	1,790	B	7,264
1989	26	B	639	1,335	683	377	2,553	483	1,873	B	8,118
1990	B	B	624	1,622	856	342	2,545	485	2,048	B	8,610
1991	31	B	628	1,492	927	380	2,721	573	2,056	A	8,845
1992	28	18	394	1,406	816	403	2,820	582	2,304	17	8,788
1993	B	A	359	1,763	880	371	2,857	585	2,682	4	9,549
1994	33	55	356	2,400	648	334	2,983	632	2,815	3	10,259
1995	29	34	437	2,348	590	354	3,375	832	2,831	5	10,835
1996	B	B	484	2,129	649	384	3,512	667	2,814	A	10,693

Number of Establishments

Year	Ag. Services, Forestry, Fisheries*	Mining	Construction	Manufacturing	Transportation & Utilities	Wholesale Trade	Retail Trade	Finance, Insurance, Real Estate	Services	Not Classifiable	Total
1982	3	3	48	46	37	42	229	57	204	7	676
1983	4	4	63	45	40	46	253	55	215	18	743
1984	4	2	56	42	45	43	261	56	221	62	792
1985	7	3	55	46	43	36	256	55	218	72	791
1986	7	2	57	47	51	34	258	50	248	38	792
1987	6	1	61	45	55	45	265	53	254	13	798
1988	7	2	61	45	51	41	241	50	243	49	790
1989	9	3	62	46	52	39	243	52	242	41	789
1990	8	2	72	48	47	38	260	49	256	36	816
1991	8	3	72	47	50	37	267	57	279	14	834
1992	9	3	77	44	55	40	265	59	282	7	841
1993	11	2	72	43	57	47	260	65	283	8	848
1994	12	4	91	41	57	41	265	60	277	7	855
1995	9	3	103	42	60	40	276	62	282	6	883
1996	9	1	103	49	70	44	282	63	279	2	902

Annual Payroll (Thousands of Dollars)

Year	Ag. Services, Forestry, Fisheries*	Mining	Construction	Manufacturing	Transportation & Utilities	Wholesale Trade	Retail Trade	Finance, Insurance, Real Estate	Services	Not Classifiable	Total
1982	D	621	7,199	34,044	11,682	7,914	17,821	5,581	12,389	D	97,533
1983	D	301	6,195	38,652	8,579	7,757	17,937	5,748	11,823	D	97,390
1984	D	D	6,284	30,612	8,324	7,290	19,184	5,336	12,899	1,188	91,767
1985	D	D	7,899	25,753	8,315	7,546	23,180	5,451	15,425	1,335	96,365
1986	D	D	8,639	28,154	8,911	7,665	23,268	5,438	17,682	530	101,423
1987	262	D	9,081	30,193	8,924	8,251	24,188	5,994	18,886	D	106,596
1988	245	D	11,479	31,244	10,110	8,350	24,555	5,775	20,482	D	114,349
1989	272	D	9,202	35,062	15,645	7,549	23,917	9,607	21,706	D	124,450
1990	D	D	9,621	41,556	18,328	7,591	25,911	9,857	24,446	D	138,402
1991	343	D	8,114	39,801	20,247	8,170	28,046	11,647	25,881	D	143,134
1992	305	463	7,261	43,047	18,263	8,342	29,914	12,449	29,889	85	150,018
1993	D	D	6,760	53,231	16,308	7,968	31,248	14,082	40,098	162	170,406
1994	366	1,481	8,734	77,515	15,239	8,108	34,267	17,929	41,565	196	205,400
1995	289	879	9,249	71,789	15,553	8,892	38,187	21,273	46,580	134	212,825
1996	D	D	10,257	66,094	18,072	9,947	38,442	18,876	47,231	D	209,942

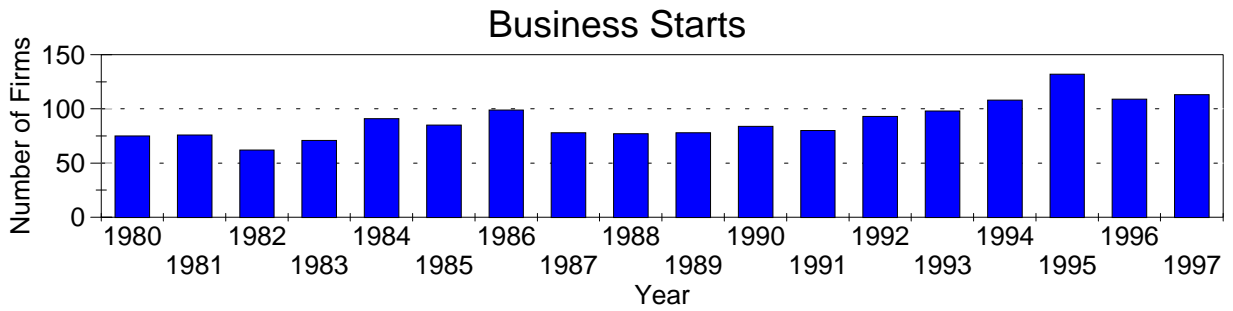
A=0-19, B=20-99, C=100-249, D=figures withheld, E=250-499,

F=500-999, G=1,000-2,499, H=2,500-4,999, I=5,000-9,999,

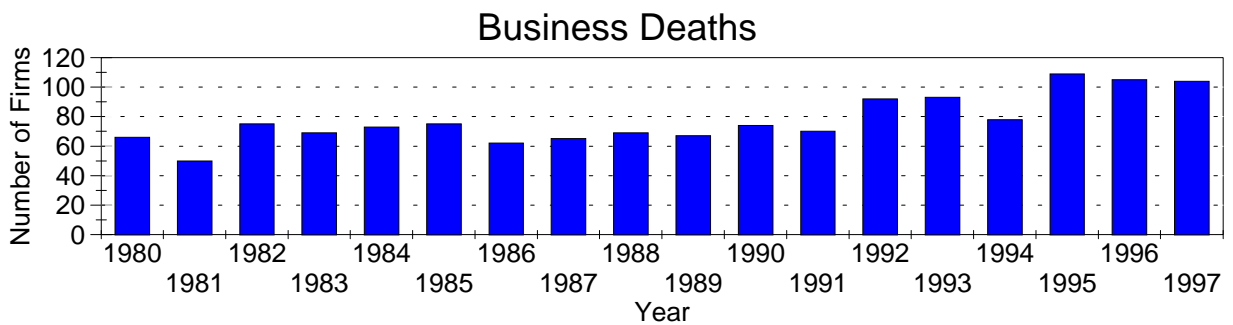
J=10,000-24,999, K=25,000-49,999, L=50,000-99,999, M=100,000 or more

*Ag. Services, Forestry & Fisheries include only non-farm businesses.

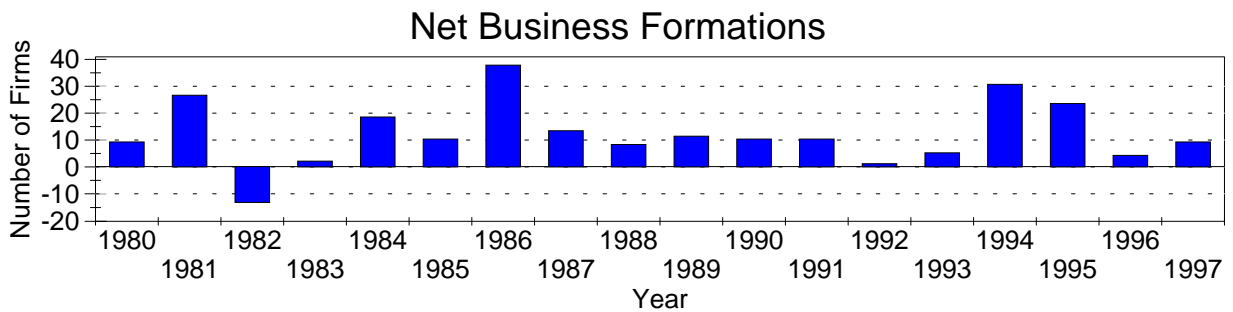
Business Statistics



Business starts and business deaths are determined from workers compensation records.



Business starts less business deaths equal net business formations.



Business Starts

Year	Number of Firms
1980	75
1981	76
1982	62
1983	71
1984	91
1985	85
1986	99
1987	78
1988	77
1989	78
1990	84
1991	80
1992	93
1993	98
1994	108
1995	132
1996	109
1997	113

Business Deaths

Year	Number of Firms
1980	66
1981	50
1982	75
1983	69
1984	73
1985	75
1986	62
1987	65
1988	69
1989	67
1990	74
1991	70
1992	92
1993	93
1994	78
1995	109
1996	105
1997	104

Net Business Formations

Year	Number of Firms
1980	9
1981	26
1982	-13
1983	2
1984	18
1985	10
1986	37
1987	13
1988	8
1989	11
1990	10
1991	10
1992	1
1993	5
1994	30
1995	23
1996	4
1997	9

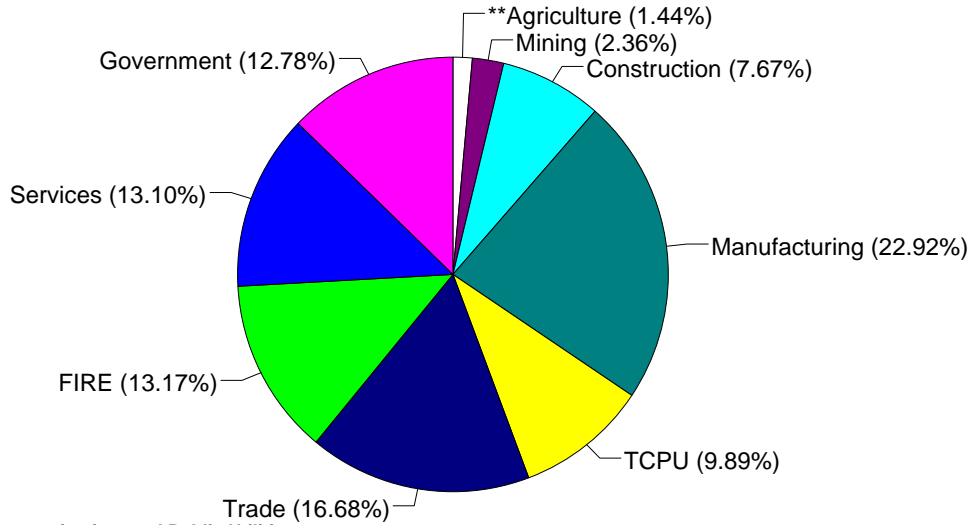
Source: Components of Business Change, Ohio Department of Development, Office of Strategic Research

Economic Structure

Total Value Added:
\$621.79 million.

Value Added by Sector (1993)*

Value Added is a broad measure of income that includes employee compensations, business profits, and returns to property, plant, and equipment.



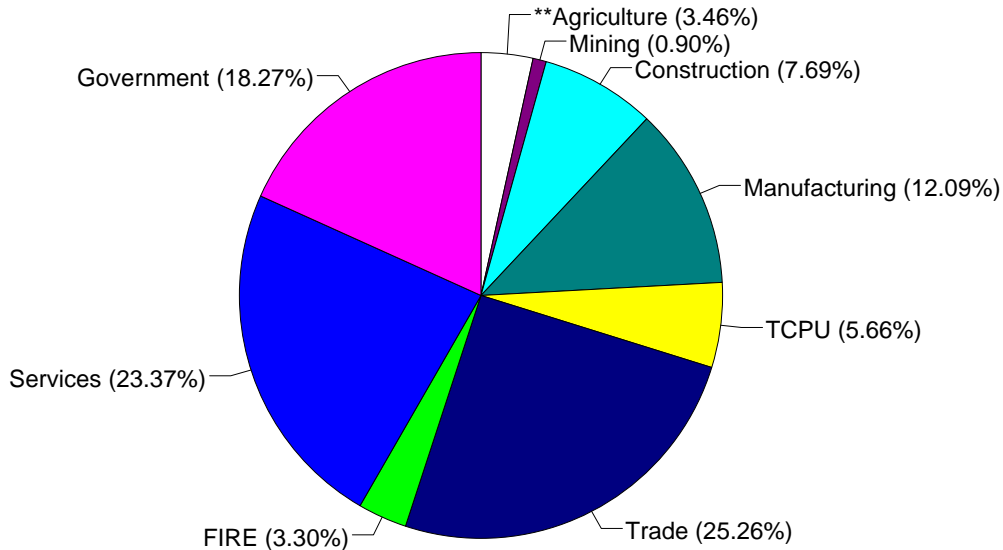
TCPU=Transportation, Communication, and Public Utilities.
FIRE=Finance, Insurance, and Real Estate.

*These estimates include many components not reported in other sources such as farms, self-employed, and small firms.

**Agriculture/Fishing/Forestry sector includes production agriculture (farm), agricultural services, forestry, and fishing enterprises.

Total Employment:
17,769 workers.

1993 Employment by Sector*



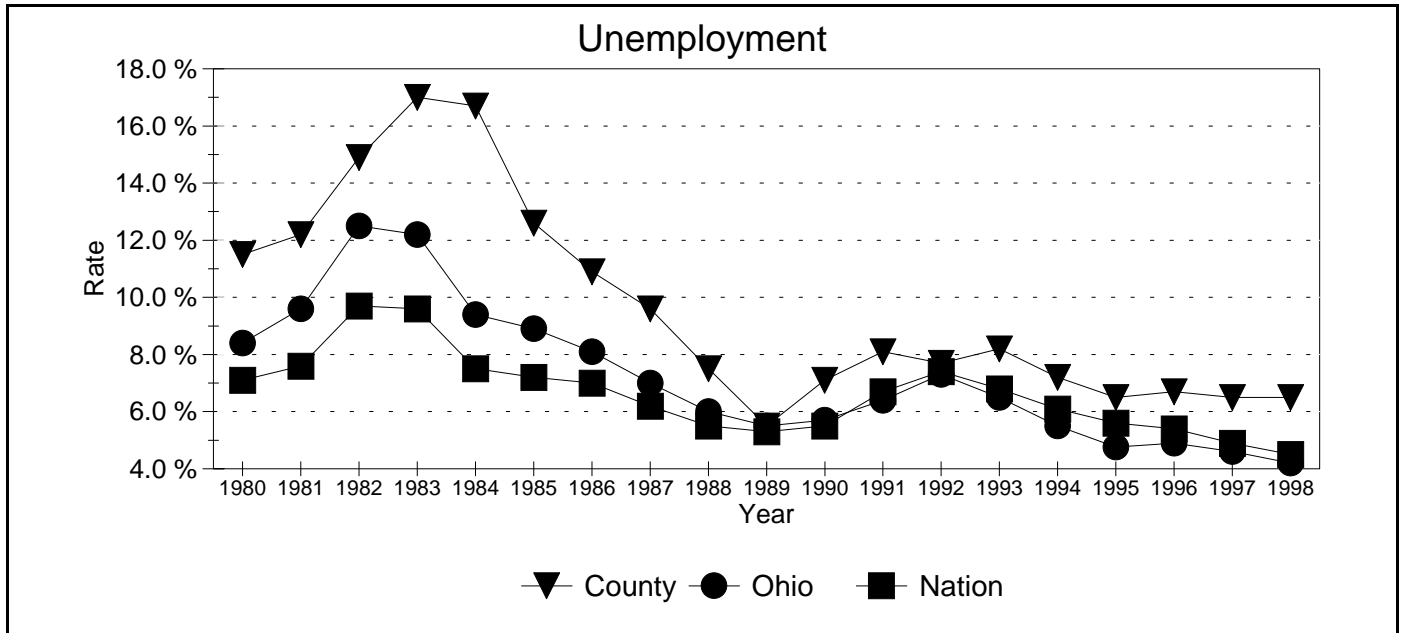
TCPU=Transportation, Communication, and Public Utilities.
FIRE=Finance, Insurance, and Real Estate.

*These estimates include many components not reported in other sources such as farms, self-employed, and small firms.

**Agriculture/Fishing/Forestry sector includes production agriculture (farm), agricultural services, forestry, and fishing enterprises.

Source: 1993 IMPLAN database, Minnesota Implan Group. IMPLAN is a non-survey regional input-output account generator originally developed by the U.S. Forest Service. These estimates provide a full picture of the county's economy.

Unemployment Statistics



Source: Bureau of Labor Statistics

Commuting Statistics

Residents retained in Lawrence County: 10,306.

Residents of Neighboring Counties Working in Lawrence County, 1990

County of Residence	Number of Incommuters
Cabell (WV)	707
Boyd (KY)	538
Scioto	517
Greenup (KY)	376
Wayne (WV)	189
Gallia	118
Carter (KY)	46

Residents of Lawrence County Working in Neighboring Counties, 1990

County of Work	Number of Outcommuters
Cabell (WV)	6,035
Boyd (KY)	2,739
Greenup (KY)	596
Wayne (WV)	571
Scioto	460
Gallia	129
Kanawha (WV)	117

Source: U.S. Census Bureau, 1990 Census Summary Tape File S-5.