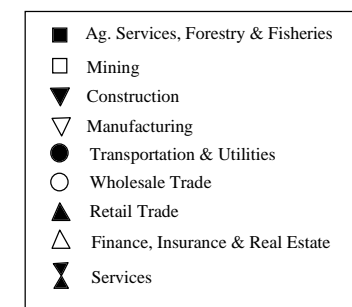
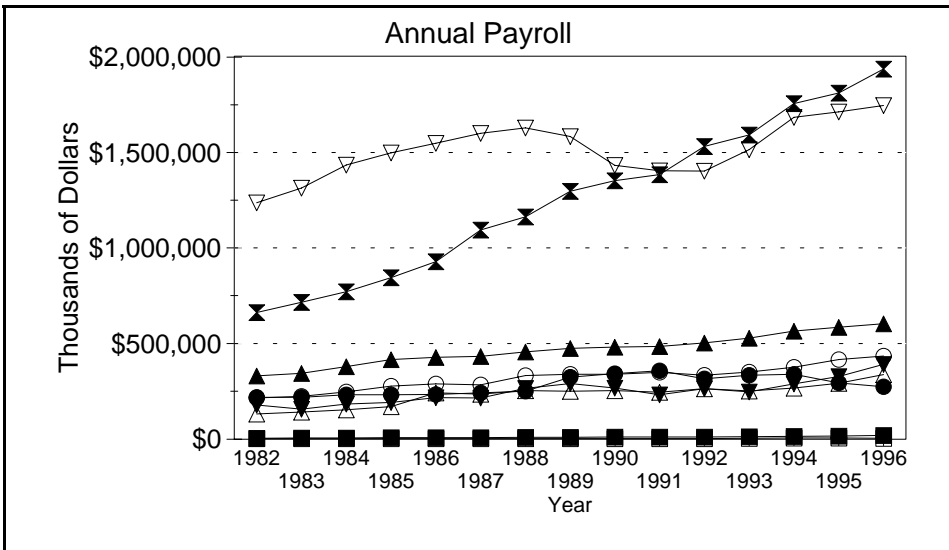
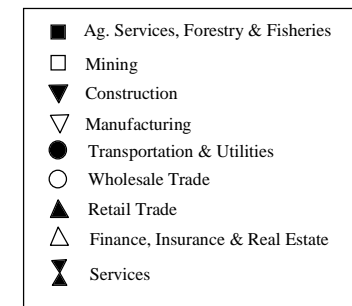
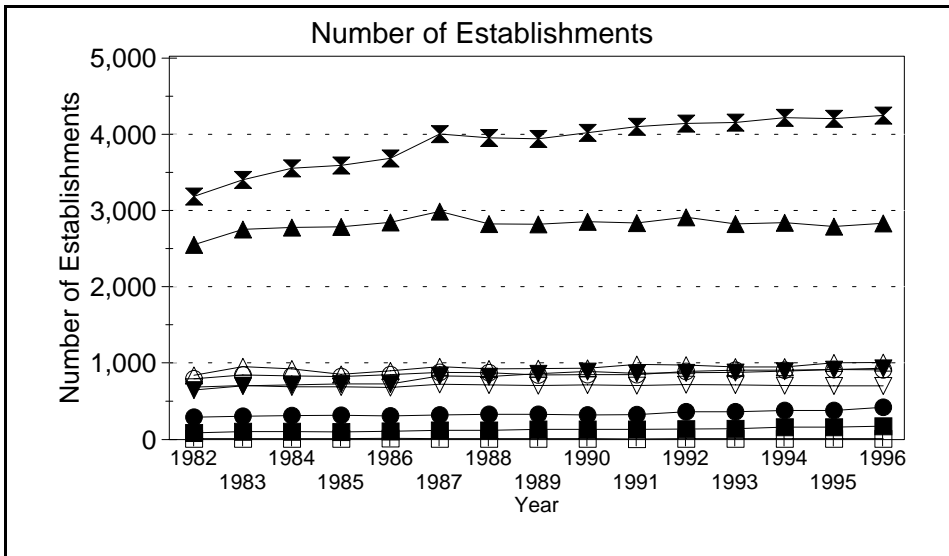
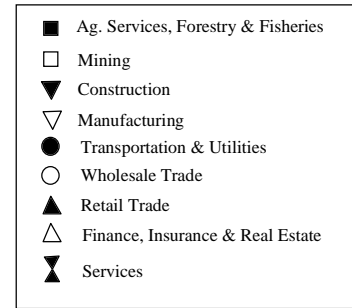
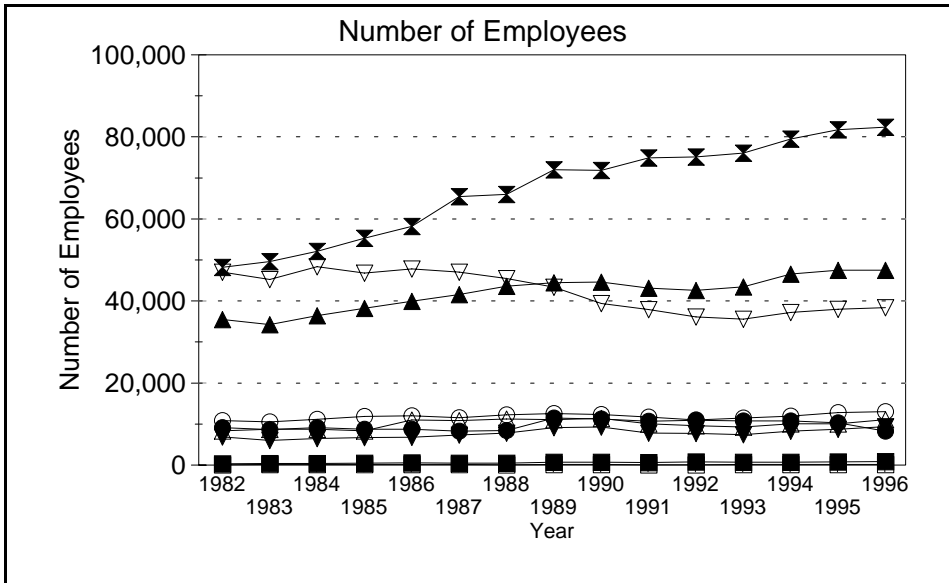


Business Statistics



Source: County Business Patterns, Ohio. These data are derived from all wage and salary employment covered by FICA which includes private non-farm employers and non-profit organizations, but does not include farms and the self employed.

Business Statistics

Number of Employees

Year	Ag. Services, Forestry, Fisheries*	Mining	Construction	Manufacturing	Transportation & Utilities	Wholesale Trade	Retail Trade	Finance, Insurance, Real Estate	Services	Not Classifiable	Total
1982	319	98	6,850	47,027	9,135	10,844	35,496	8,374	48,224	154	166,521
1983	393	152	5,983	45,266	8,640	10,500	34,279	8,757	49,574	638	164,182
1984	412	149	6,506	48,371	9,089	11,174	36,430	8,761	52,123	1,104	174,119
1985	505	134	6,683	46,774	8,706	11,822	38,196	8,310	55,324	1,454	177,908
1986	565	169	6,793	47,793	8,719	12,007	39,925	10,970	58,222	1,437	186,600
1987	505	127	7,368	47,011	8,256	11,545	41,562	10,821	65,451	348	192,994
1988	505	95	7,826	45,454	8,391	12,250	43,604	11,231	66,015	916	196,287
1989	690	129	9,124	43,339	11,434	12,597	44,424	11,086	71,967	1,472	206,262
1990	684	121	9,273	39,424	11,234	12,331	44,645	11,390	71,810	495	201,407
1991	644	104	7,831	37,881	10,651	11,668	43,160	10,033	74,865	273	197,110
1992	759	113	7,723	36,101	10,888	10,990	42,574	9,614	75,112	84	193,958
1993	735	137	7,396	35,577	10,734	11,442	43,431	9,317	76,082	154	195,005
1994	703	142	8,296	37,236	10,765	11,913	46,577	10,093	79,468	191	205,384
1995	788	163	8,712	38,003	10,335	12,770	47,534	10,062	81,748	223	210,338
1996	878	149	9,341	38,351	8,279	12,998	47,542	11,059	82,384	53	211,034

Number of Establishments

Year	Ag. Services, Forestry, Fisheries*	Mining	Construction	Manufacturing	Transportation & Utilities	Wholesale Trade	Retail Trade	Finance, Insurance, Real Estate	Services	Not Classifiable	Total
1982	89	11	647	683	291	795	2,541	837	3,172	125	9,191
1983	106	11	702	704	306	843	2,744	951	3,389	469	10,225
1984	106	13	714	690	311	829	2,767	923	3,539	566	10,458
1985	100	14	728	689	317	824	2,777	852	3,575	703	10,579
1986	109	17	727	680	307	848	2,832	896	3,669	616	10,701
1987	119	14	830	721	320	878	2,976	951	3,987	211	11,007
1988	122	13	822	715	329	871	2,813	923	3,936	571	11,115
1989	133	14	860	706	330	842	2,809	925	3,923	589	11,131
1990	134	13	891	715	320	848	2,841	930	4,002	355	11,049
1991	135	10	862	706	326	847	2,825	981	4,081	195	10,968
1992	139	11	873	719	362	887	2,902	973	4,123	105	11,094
1993	141	12	877	713	363	906	2,815	946	4,137	109	11,019
1994	162	12	892	705	381	905	2,830	948	4,198	90	11,123
1995	164	14	913	701	381	912	2,779	1,000	4,185	86	11,135
1996	175	14	931	700	421	909	2,821	1,007	4,226	36	11,240

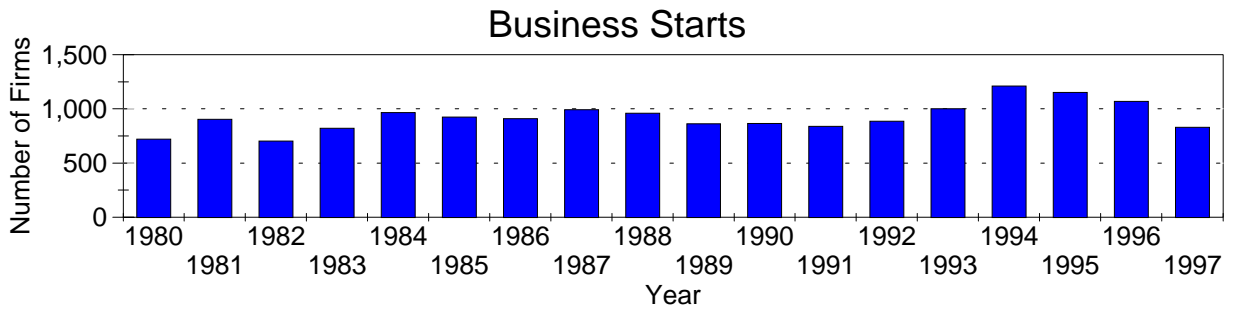
Annual Payroll (Thousands of Dollars)

Year	Ag. Services, Forestry, Fisheries*	Mining	Construction	Manufacturing	Transportation & Utilities	Wholesale Trade	Retail Trade	Finance, Insurance, Real Estate	Services	Not Classifiable	Total
1982	5,000	3,287	178,508	1,234,432	219,288	216,292	330,034	132,352	662,461	2,410	2,984,063
1983	6,123	3,755	156,396	1,312,160	218,219	223,925	343,793	142,027	715,591	11,782	3,133,772
1984	6,905	3,882	183,565	1,431,181	231,876	247,581	379,377	153,385	769,941	19,605	3,427,297
1985	7,750	4,008	191,441	1,496,058	231,551	277,163	415,531	171,066	844,577	22,598	3,661,742
1986	8,508	4,124	217,495	1,545,705	234,404	288,983	427,898	241,801	927,728	23,680	3,920,326
1987	8,208	4,113	216,058	1,597,879	241,467	283,663	432,655	235,556	1,092,125	16,274	4,127,998
1988	9,212	3,688	265,026	1,625,985	251,154	333,169	456,689	253,409	1,161,155	43,892	4,403,379
1989	10,274	3,894	291,073	1,580,439	323,513	338,882	474,223	250,585	1,295,640	24,423	4,592,946
1990	12,043	3,769	266,868	1,429,466	342,211	339,599	481,076	254,269	1,349,487	9,264	4,488,052
1991	11,006	3,317	232,986	1,402,262	358,086	348,952	484,469	246,210	1,381,485	9,266	4,478,039
1992	12,263	3,231	264,545	1,399,365	316,585	334,803	503,050	263,961	1,529,054	3,016	4,629,873
1993	12,903	4,805	247,076	1,511,374	338,836	350,803	527,338	252,251	1,589,625	1,502	4,832,513
1994	14,689	6,405	288,838	1,680,100	338,414	375,231	565,285	268,094	1,753,347	1,789	5,292,192
1995	17,303	6,219	327,870	1,709,955	294,218	416,340	584,300	291,801	1,807,102	2,005	5,457,113
1996	20,108	5,059	390,992	1,743,491	274,627	433,834	603,899	337,291	1,932,766	514	5,742,581

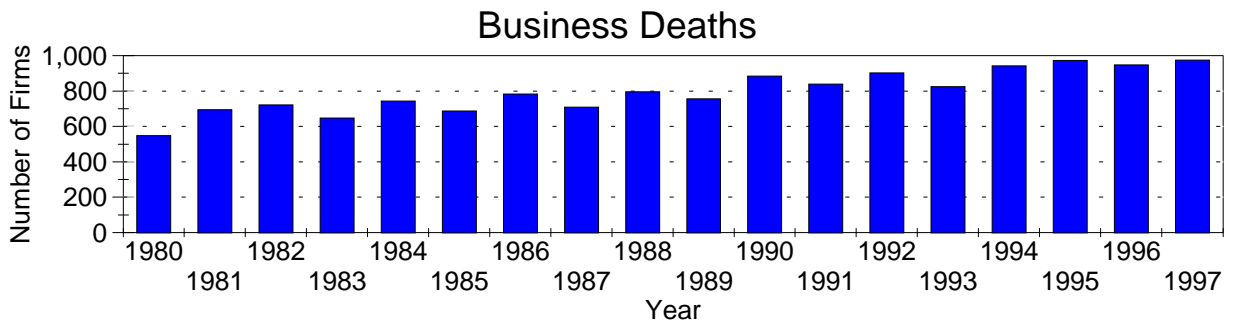
A=0-19, B=20-99, C=100-249, D=figures withheld, E=250-499,
 F=500-999, G=1,000-2,499, H=2,500-4,999, I=5,000-9,999,
 J=10,000-24,999, K=25,000-49,999, L=50,000-99,999, M=100,000 or more

*Ag. Services, Forestry & Fisheries include only non-farm businesses.

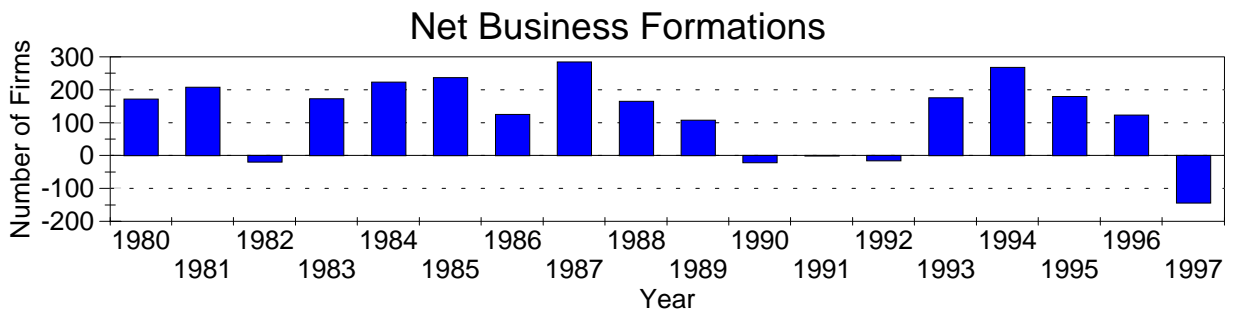
Business Statistics



Business starts and business deaths are determined from workers compensation records.



Business starts less business deaths equal net business formations.



Business Starts

Year	Number of Firms
1980	720
1981	903
1982	703
1983	820
1984	967
1985	924
1986	908
1987	993
1988	961
1989	862
1990	864
1991	838
1992	887
1993	1,000
1994	1,211
1995	1,151
1996	1,070
1997	830

Business Deaths

Year	Number of Firms
1980	548
1981	695
1982	722
1983	647
1984	744
1985	687
1986	783
1987	709
1988	796
1989	755
1990	885
1991	839
1992	902
1993	825
1994	943
1995	972
1996	947
1997	974

Net Business Formations

Year	Number of Firms
1980	172
1981	208
1982	-19
1983	173
1984	223
1985	237
1986	125
1987	284
1988	165
1989	107
1990	-21
1991	-1
1992	-15
1993	175
1994	268
1995	179
1996	123
1997	-144

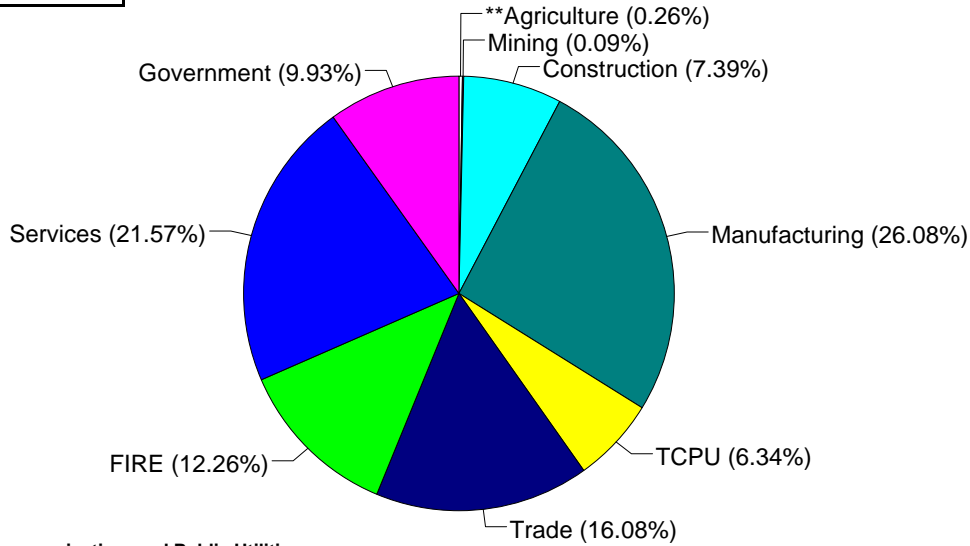
Source: Components of Business Change, Ohio Department of Development, Office of Strategic Research

Economic Structure

Total Value Added:
\$11,769.67 million.

Value Added by Sector (1993)*

Value Added is a broad measure of income that includes employee compensations, business profits, and returns to property, plant, and equipment.



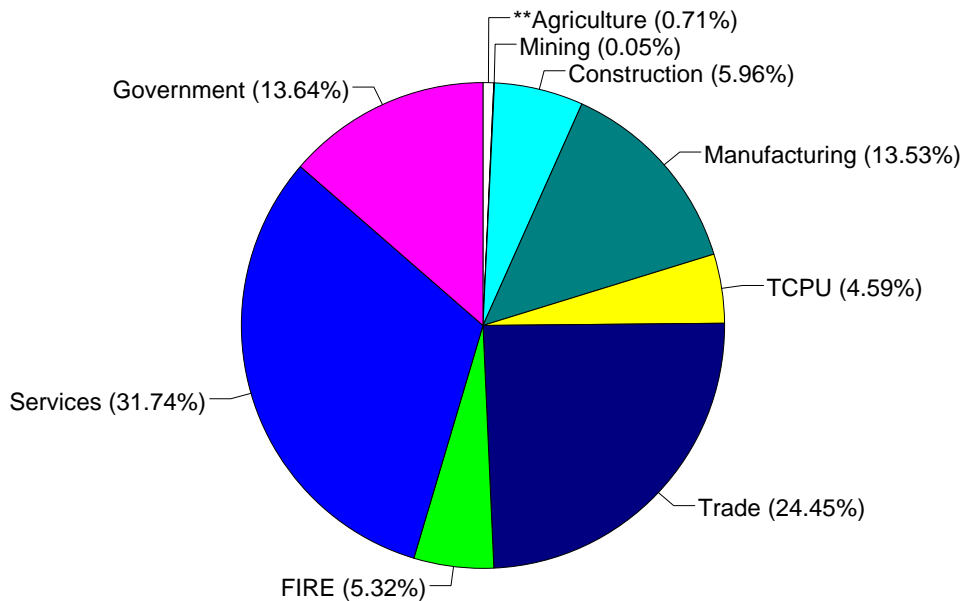
TCPU=Transportation, Communication, and Public Utilities.
FIRE=Finance, Insurance, and Real Estate.

*These estimates include many components not reported in other sources such as farms, self-employed, and small firms.

**Agriculture/Fishing/Forestry sector includes production agriculture (farm), agricultural services, forestry, and fishing enterprises.

Total Employment:
270,496 workers.

1993 Employment by Sector*



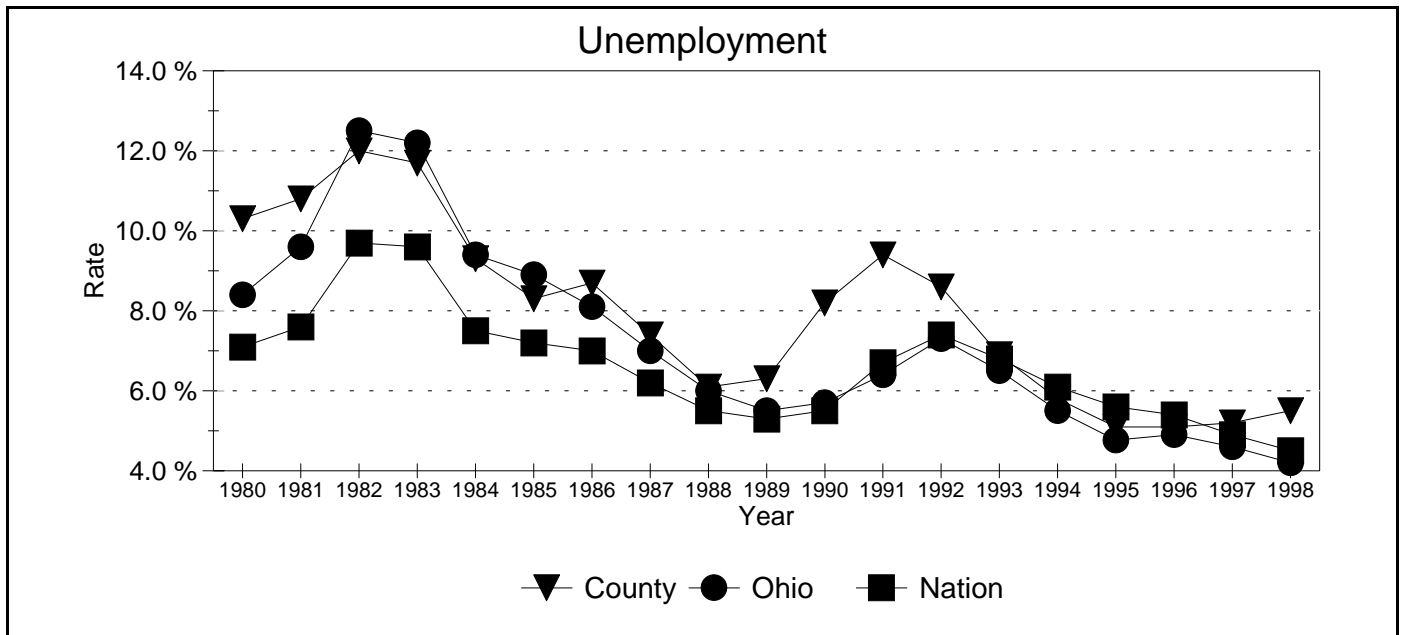
TCPU=Transportation, Communication, and Public Utilities.
FIRE=Finance, Insurance, and Real Estate.

*These estimates include many components not reported in other sources such as farms, self-employed, and small firms.

**Agriculture/Fishing/Forestry sector includes production agriculture (farm), agricultural services, forestry, and fishing enterprises.

Source: 1993 IMPLAN database, Minnesota Implan Group. IMPLAN is a non-survey regional input-output account generator originally developed by the U.S. Forest Service. These estimates provide a full picture of the county's economy.

Unemployment Statistics



Source: Bureau of Labor Statistics

Commuting Statistics

Residents retained in Lucas County:
175,756.

Residents of Neighboring Counties Working in Lucas County, 1990

County of Residence	Number of Incommuters
Wood	16,610
Monroe (MI)	12,263
Fulton	4,120
Ottawa	2,657
Lenawee (MI)	1,282
Sandusky	1,011
Henry	804

Residents of Lucas County Working in Neighboring Counties, 1990

County of Work	Number of Outcommuters
Wood	12,278
Monroe (MI)	2,994
Wayne (MI)	1,342
Fulton	1,279
Ottawa	1,252
Sandusky	465
Lenawee (MI)	431

Source: U.S. Census Bureau, 1990 Census Summary Tape File S-5.