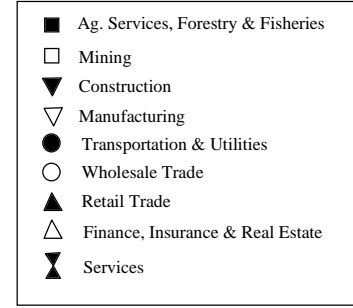
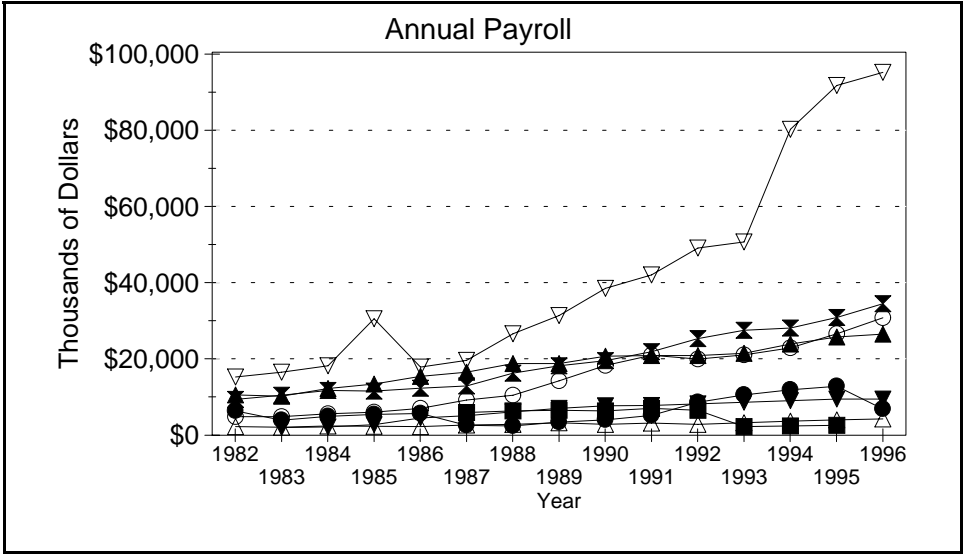
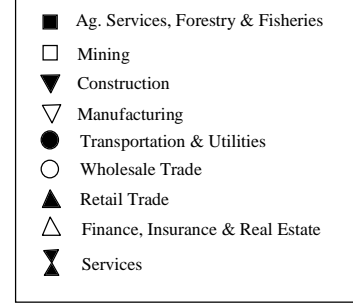
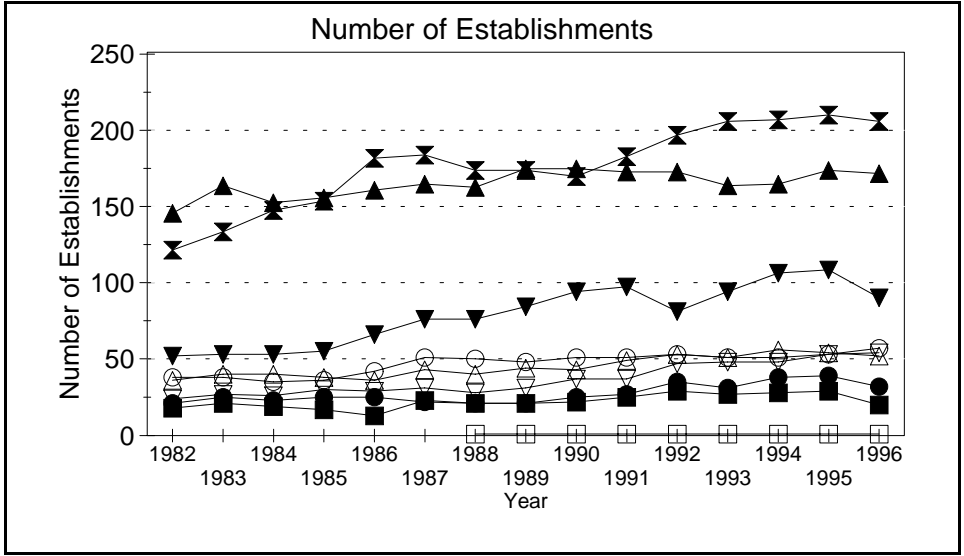
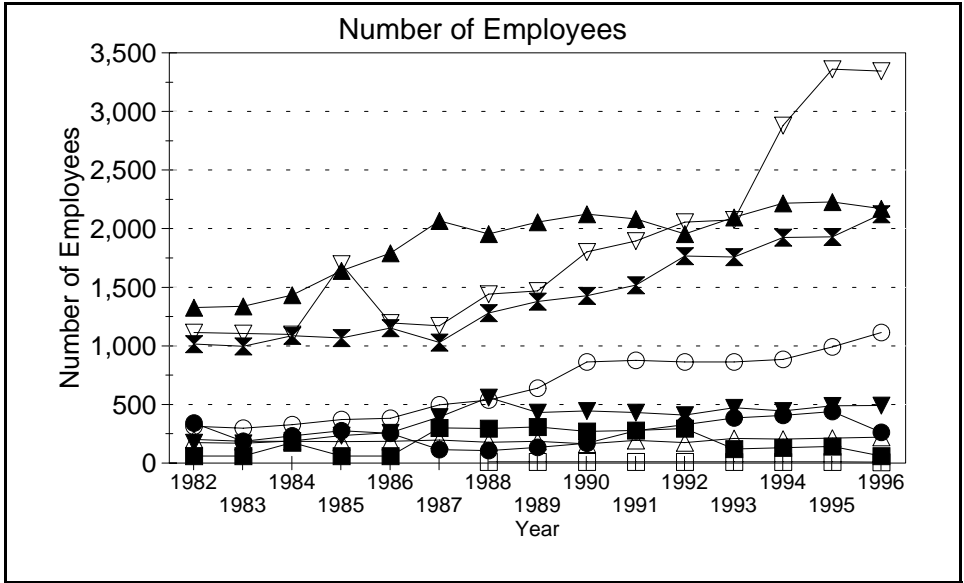


Business Statistics



Source: County Business Patterns, Ohio. These data are derived from all wage and salary employment covered by FICA which includes private non-farm employers and non-profit organizations, but does not include farms and the self employed.

## Business Statistics

### Number of Employees

Year	Ag. Services, Forestry, Fisheries*	Mining	Construction	Manufacturing	Transportation & Utilities	Wholesale Trade	Retail Trade	Finance, Insurance, Real Estate	Services	Not Classifiable	Total
1982	B		C	1,114	340	313	1,326	203	1,015	2	4,570
1983	B		170	1,106	187	298	1,337	185	996	B	4,396
1984	C		189	1,097	233	328	1,434	187	1,086	C	4,860
1985	B		234	1,697	276	371	1,641	184	1,068	B	5,646
1986	B		258	1,195	254	383	1,790	187	1,152	B	5,355
1987	300		393	1,170	114	496	2,068	196	1,028	16	5,781
1988	294	A	561	1,442	107	538	1,954	177	1,281	B	6,418
1989	308	A	430	1,470	135	640	2,057	186	1,380	B	6,686
1990	271	A	445	1,803	169	863	2,124	164	1,427	B	7,297
1991	278	A	431	1,895	276	875	2,084	194	1,518	A	7,574
1992	296	A	409	2,057	327	862	1,955	174	1,767	A	7,865
1993	121	A	471	2,075	386	862	2,096	209	1,757	A	7,991
1994	130	A	446	2,881	407	884	2,218	206	1,925	A	9,110
1995	141	A	490	3,361	440	991	2,228	214	1,931	A	9,811
1996	B	A	491	3,344	261	1,113	2,171	222	2,124	A	9,818

### Number of Establishments

Year	Ag. Services, Forestry, Fisheries*	Mining	Construction	Manufacturing	Transportation & Utilities	Wholesale Trade	Retail Trade	Finance, Insurance, Real Estate	Services	Not Classifiable	Total
1982	18		52	24	21	38	145	36	121	5	460
1983	21		53	27	25	38	163	40	133	23	523
1984	19		53	26	23	35	152	40	147	54	549
1985	17		55	30	25	36	155	38	153	76	585
1986	13		66	29	25	42	160	36	181	46	598
1987	23		76	31	22	51	164	43	183	14	607
1988	21	1	76	28	21	50	162	40	173	47	619
1989	21	1	84	31	21	48	174	44	173	37	634
1990	22	1	94	37	25	51	174	43	169	27	643
1991	25	1	97	37	27	51	172	49	182	16	657
1992	29	1	81	47	35	53	172	53	196	9	676
1993	27	1	94	48	31	51	163	51	205	5	676
1994	28	1	106	48	38	51	164	56	206	11	709
1995	29	1	108	53	39	53	173	54	209	10	729
1996	20	1	90	54	32	57	171	52	205	2	684

### Annual Payroll (Thousands of Dollars)

Year	Ag. Services, Forestry, Fisheries*	Mining	Construction	Manufacturing	Transportation & Utilities	Wholesale Trade	Retail Trade	Finance, Insurance, Real Estate	Services	Not Classifiable	Total
1982	D		D	15,184	6,338	4,838	10,564	2,220	9,366	21	51,498
1983	D		1,995	16,451	3,967	4,806	10,177	2,084	10,460	D	52,089
1984	D		2,152	18,145	4,904	5,591	12,224	2,444	11,676	D	59,962
1985	D		2,738	30,439	5,462	6,051	13,395	2,358	11,515	D	74,006
1986	D		4,503	17,778	5,700	6,992	15,372	2,280	12,287	D	66,619
1987	5,905		5,096	19,520	2,572	9,176	16,476	2,668	12,864	168	74,445
1988	6,351	D	6,128	26,498	2,427	10,451	18,675	2,836	16,168	D	90,606
1989	6,523	D	7,043	31,236	3,393	14,217	18,685	3,248	18,104	D	103,513
1990	6,339	D	7,716	38,343	4,051	18,215	20,650	2,823	19,442	D	118,231
1991	6,987	D	7,742	41,831	5,138	20,853	20,815	3,154	21,845	D	128,803
1992	6,490	D	8,213	48,905	8,629	19,853	20,819	2,881	25,233	D	141,253
1993	2,253	D	8,591	50,478	10,525	21,010	21,378	3,277	27,422	D	145,153
1994	2,439	D	8,996	79,860	11,871	22,787	23,813	3,690	27,960	D	181,692
1995	2,575	D	9,462	91,345	12,811	26,450	25,660	4,041	30,737	D	203,381
1996	D	D	9,468	94,767	6,885	30,642	26,390	4,288	34,337	D	208,244

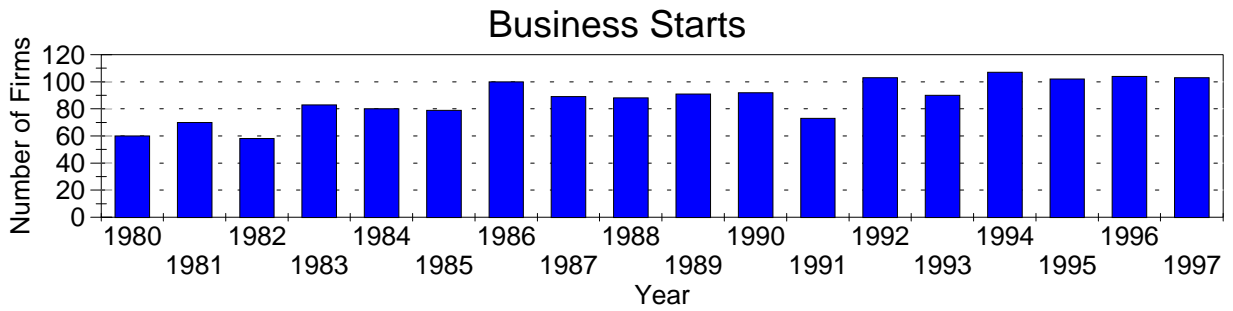
A=0-19, B=20-99, C=100-249, D=figures withheld, E=250-499,

F=500-999, G=1,000-2,499, H=2,500-4,999, I=5,000-9,999,

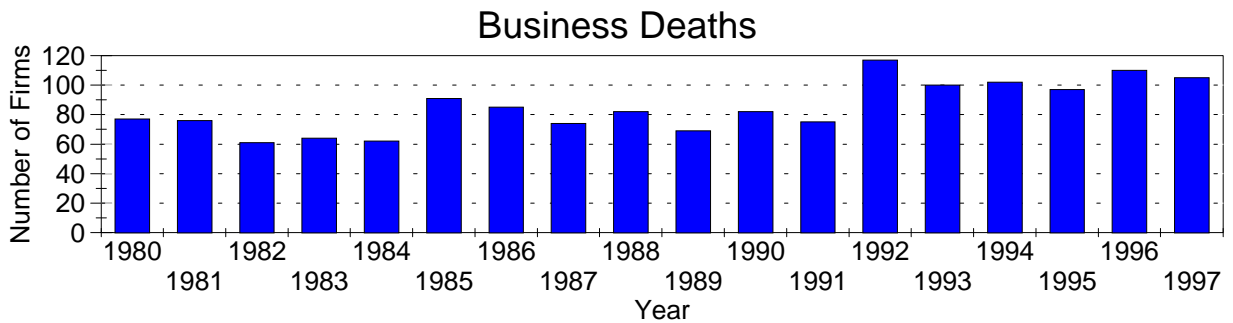
J=10,000-24,999, K=25,000-49,999, L=50,000-99,999, M=100,000 or more

\*Ag. Services, Forestry & Fisheries include only non-farm businesses.

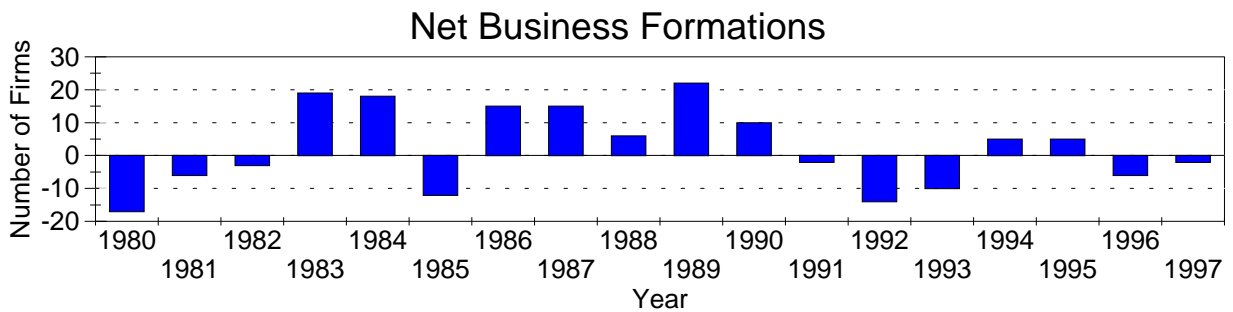
Business Statistics



Business starts and business deaths are determined from workers compensation records.



Business starts less business deaths equal net business formations.



Business Starts

Year	Number of Firms
1980	60
1981	70
1982	58
1983	83
1984	80
1985	79
1986	100
1987	89
1988	88
1989	91
1990	92
1991	73
1992	103
1993	90
1994	107
1995	102
1996	104
1997	103

Business Deaths

Year	Number of Firms
1980	77
1981	76
1982	61
1983	64
1984	62
1985	91
1986	85
1987	74
1988	82
1989	69
1990	82
1991	75
1992	117
1993	100
1994	102
1995	97
1996	110
1997	105

Net Business Formations

Year	Number of Firms
1980	-17
1981	-6
1982	-3
1983	19
1984	18
1985	-12
1986	15
1987	15
1988	6
1989	22
1990	10
1991	-2
1992	-14
1993	-10
1994	5
1995	5
1996	-6
1997	-2

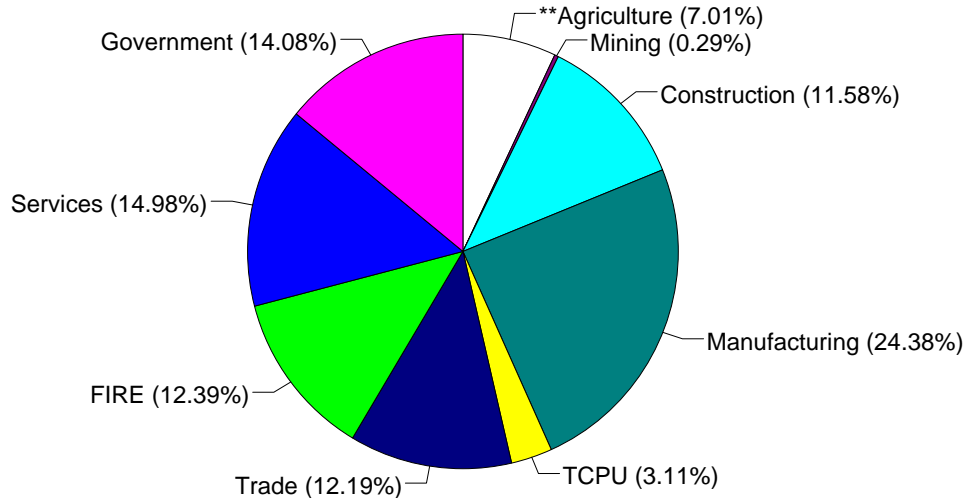
Source: Components of Business Change, Ohio Department of Development, Office of Strategic Research

Economic Structure

Total Value Added:  
\$486.78 million.

Value Added by Sector (1993)\*

Value Added is a broad measure of income that includes employee compensations, business profits, and returns to property, plant, and equipment.



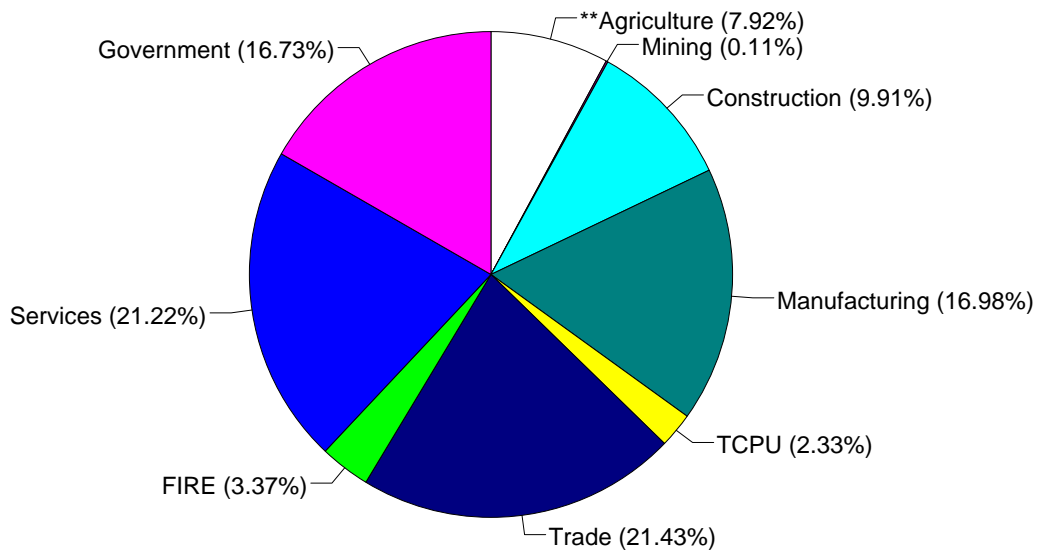
TCPU=Transportation, Communication, and Public Utilities.  
FIRE=Finance, Insurance, and Real Estate.

\*These estimates include many components not reported in other sources such as farms, self-employed, and small firms.

\*\*Agriculture/Fishing/Forestry sector includes production agriculture (farm), agricultural services, forestry, and fishing enterprises.

Total Employment:  
13,977 workers.

1993 Employment by Sector\*



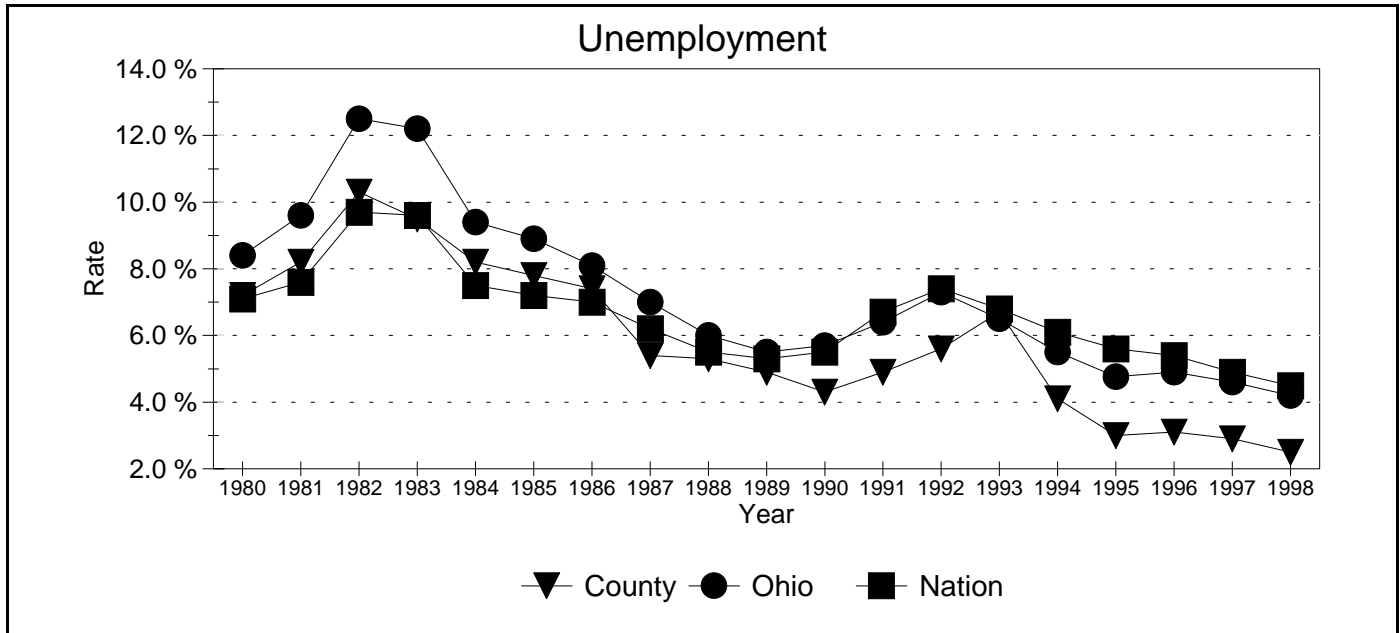
TCPU=Transportation, Communication, and Public Utilities.  
FIRE=Finance, Insurance, and Real Estate.

\*These estimates include many components not reported in other sources such as farms, self-employed, and small firms.

\*\*Agriculture/Fishing/Forestry sector includes production agriculture (farm), agricultural services, forestry, and fishing enterprises.

Source: 1993 IMPLAN database, Minnesota Implan Group. IMPLAN is a non-survey regional input-output account generator originally developed by the U.S. Forest Service. These estimates provide a full picture of the county's economy.

Unemployment Statistics



Source: Bureau of Labor Statistics

Commuting Statistics

Residents retained in Madison County: 6,987.

Residents of Neighboring Counties Working in Madison County, 1990

County of Residence	Number of Incommuters
Franklin	1,416
Clark	655
Fayette	626
Pickaway	328
Union	280
Champaign	192
Delaware	58

Residents of Madison County Working in Neighboring Counties, 1990

County of Work	Number of Outcommuters
Franklin	7,197
Union	707
Clark	457
Pickaway	172
Greene	122
Delaware	101
Montgomery	78

Source: U.S. Census Bureau, 1990 Census Summary Tape File S-5.