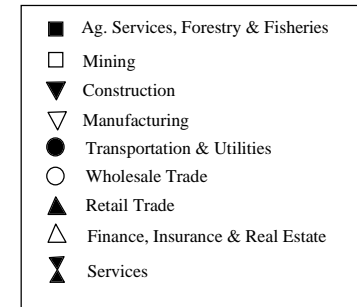
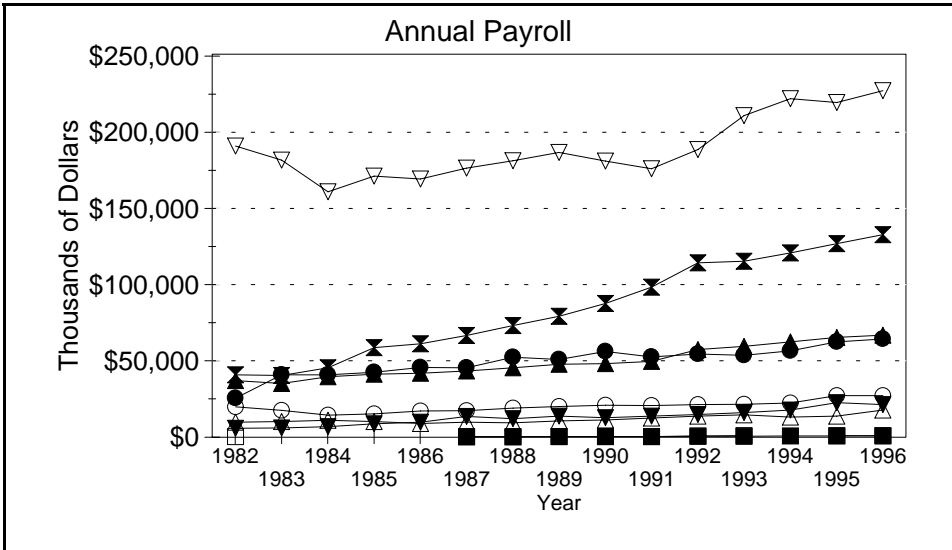
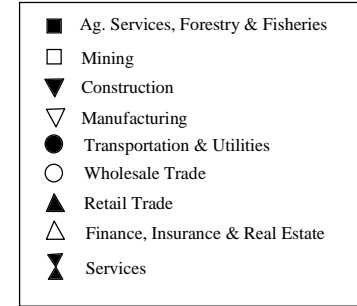
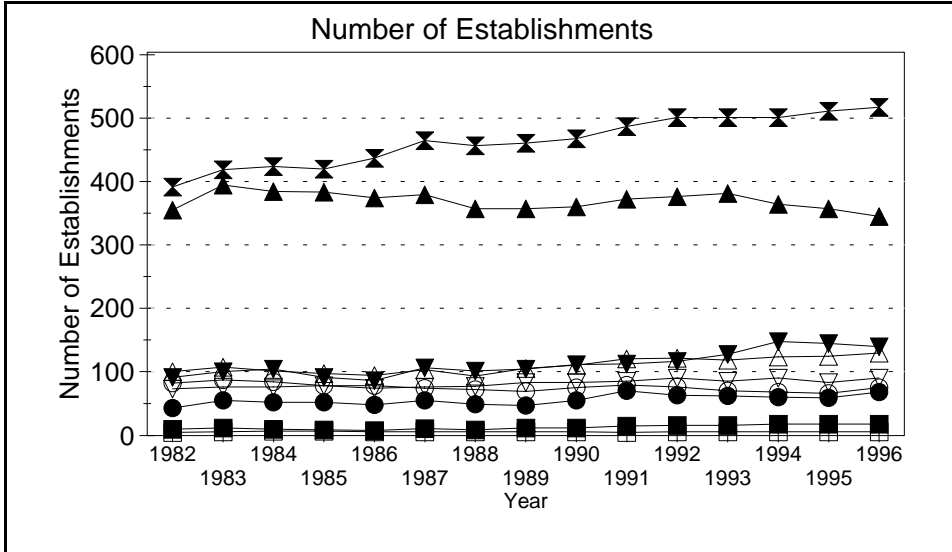
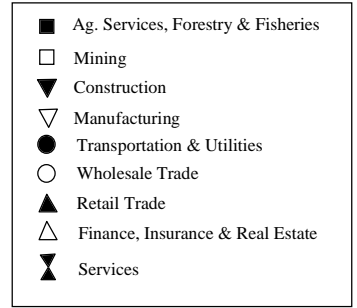
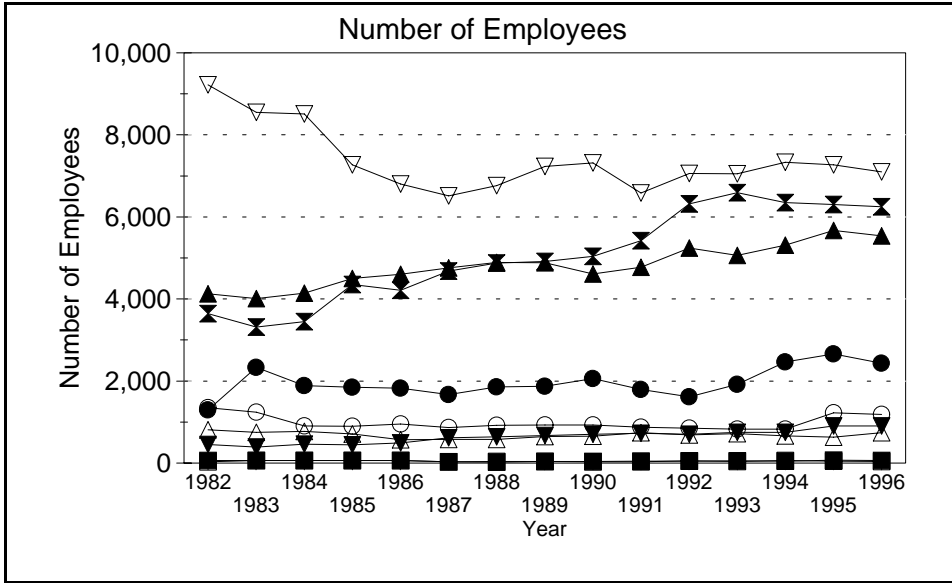


Business Statistics



Source: County Business Patterns, Ohio. These data are derived from all wage and salary employment covered by FICA which includes private non-farm employers and non-profit organizations, but does not include farms and the self employed.

Business Statistics

Number of Employees

Year	Ag. Services, Forestry, Fisheries*	Mining	Construction	Manufacturing	Transportation & Utilities	Wholesale Trade	Retail Trade	Finance, Insurance, Real Estate	Services	Not Classifiable	Total
1982	B	28	449	9,219	1,297	1,348	4,129	808	3,643	A	20,967
1983	B	B	389	8,546	2,332	1,239	4,007	752	3,318	62	20,708
1984	B	B	460	8,507	1,888	903	4,139	776	3,448	178	20,378
1985	B	B	447	7,267	1,850	894	4,499	713	4,352	269	20,357
1986	B	B	491	6,798	1,824	955	4,602	566	4,210	280	19,779
1987	29	31	619	6,512	1,673	867	4,756	578	4,678	50	19,793
1988	27	36	640	6,765	1,853	923	4,893	580	4,878	63	20,658
1989	42	41	669	7,232	1,869	928	4,882	651	4,917	141	21,372
1990	41	31	703	7,314	2,063	926	4,613	658	5,042	38	21,429
1991	45	33	723	6,581	1,795	877	4,776	740	5,421	12	21,003
1992	50	56	700	7,062	1,613	854	5,242	686	6,322	5	22,590
1993	54	38	746	7,050	1,922	825	5,064	719	6,590	11	23,019
1994	50	B	749	7,336	2,462	823	5,312	664	6,351	B	23,817
1995	73	48	906	7,267	2,662	1,225	5,673	633	6,305	16	24,808
1996	65	41	907	7,095	2,436	1,184	5,536	740	6,247	2	24,253

Number of Establishments

Year	Ag. Services, Forestry, Fisheries*	Mining	Construction	Manufacturing	Transportation & Utilities	Wholesale Trade	Retail Trade	Finance, Insurance, Real Estate	Services	Not Classifiable	Total
1982	10	5	91	73	43	82	353	100	389	16	1,162
1983	12	6	100	76	55	87	392	107	416	39	1,290
1984	10	7	104	76	52	84	382	101	421	104	1,341
1985	9	7	91	78	52	78	381	97	417	110	1,320
1986	8	6	86	74	48	78	372	94	434	89	1,289
1987	11	6	106	76	55	74	377	103	462	28	1,298
1988	9	6	101	77	49	72	355	93	454	83	1,299
1989	12	6	104	83	47	69	355	105	458	67	1,306
1990	12	6	111	83	55	75	358	110	465	40	1,315
1991	15	5	112	85	70	79	370	120	484	16	1,356
1992	16	6	116	90	63	76	374	121	498	19	1,379
1993	16	6	127	85	62	70	379	118	498	14	1,375
1994	18	6	147	90	60	68	362	123	498	13	1,385
1995	18	6	144	83	59	66	355	124	508	14	1,377
1996	18	6	139	90	68	75	343	129	514	4	1,386

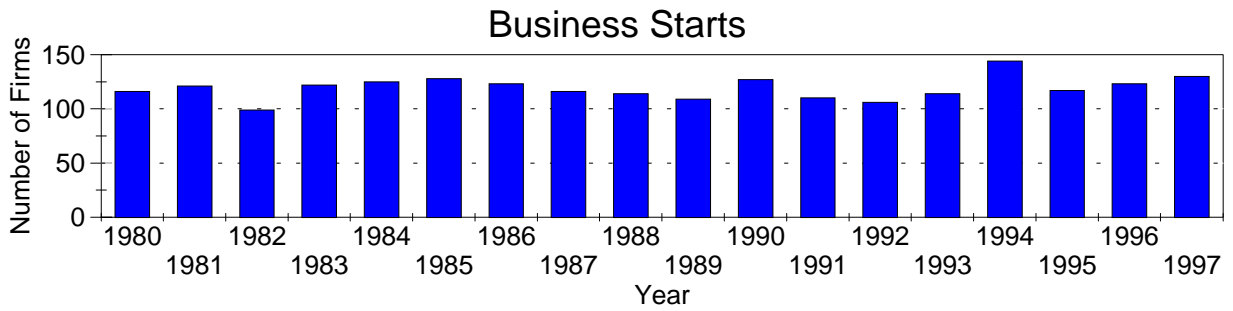
Annual Payroll (Thousands of Dollars)

Year	Ag. Services, Forestry, Fisheries*	Mining	Construction	Manufacturing	Transportation & Utilities	Wholesale Trade	Retail Trade	Finance, Insurance, Real Estate	Services	Not Classifiable	Total
1982	D	397	5,900	190,138	25,531	19,758	36,943	9,866	40,750	D	329,699
1983	D	D	6,139	180,918	40,692	17,595	35,164	10,314	40,340	627	332,584
1984	D	D	6,954	160,125	40,724	14,359	39,383	11,092	45,406	2,011	320,870
1985	D	D	8,748	170,486	42,469	15,254	41,120	10,216	58,384	2,227	349,590
1986	D	D	9,747	168,530	45,474	17,219	41,701	8,931	60,921	3,181	356,224
1987	284	395	13,641	175,590	45,333	17,349	43,335	9,713	66,317	447	372,404
1988	280	374	12,214	180,509	52,133	19,014	45,243	9,462	72,889	2,966	395,084
1989	385	422	13,878	185,947	50,708	19,985	47,547	10,727	78,896	1,358	409,853
1990	479	419	12,695	180,327	56,072	20,820	47,949	11,349	87,227	1,195	418,532
1991	496	443	13,809	175,267	52,331	20,608	49,498	12,555	97,954	389	423,350
1992	574	918	14,887	187,773	54,339	21,255	57,224	13,703	113,809	111	464,593
1993	635	962	16,104	209,914	53,545	21,448	59,330	14,692	114,904	191	491,725
1994	765	D	17,807	221,003	56,452	22,303	62,211	13,235	120,326	D	515,259
1995	897	991	22,573	218,469	62,169	27,200	65,096	13,871	126,407	92	537,765
1996	1,044	866	21,296	226,111	64,021	27,174	66,532	17,712	132,167	50	556,973

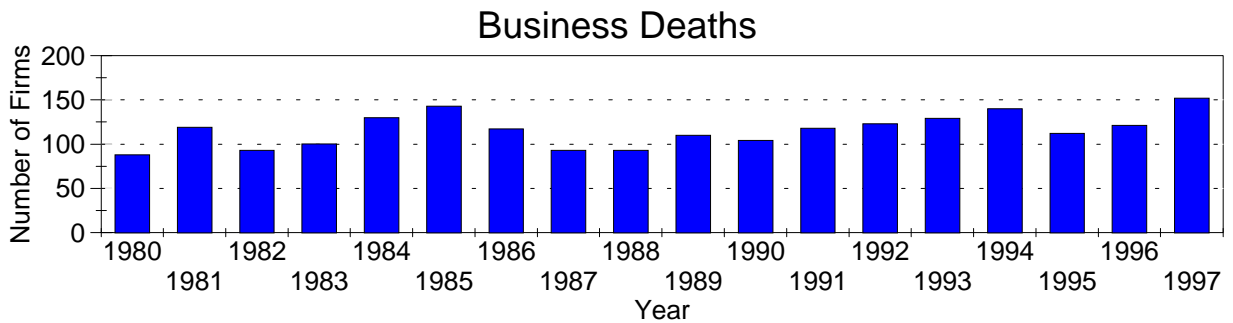
A=0-19, B=20-99, C=100-249, D=figures withheld, E=250-499,  
 F=500-999, G=1,000-2,499, H=2,500-4,999, I=5,000-9,999,  
 J=10,000-24,999, K=25,000-49,999, L=50,000-99,999, M=100,000 or more

\*Ag. Services, Forestry & Fisheries include only non-farm businesses.

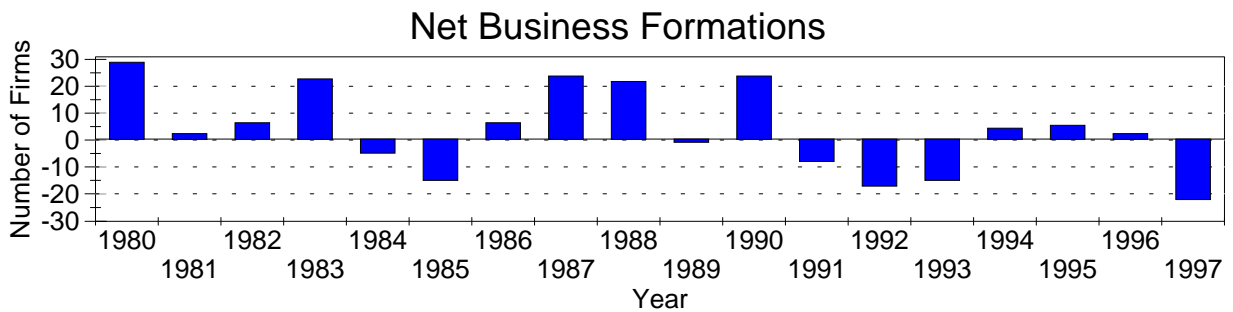
Business Statistics



Business starts and business deaths are determined from workers compensation records.



Business starts less business deaths equal net business formations.



Business Starts

Year	Number of Firms
1980	116
1981	121
1982	99
1983	122
1984	125
1985	128
1986	123
1987	116
1988	114
1989	109
1990	127
1991	110
1992	106
1993	114
1994	144
1995	117
1996	123
1997	130

Business Deaths

Year	Number of Firms
1980	88
1981	119
1982	93
1983	100
1984	130
1985	143
1986	117
1987	93
1988	93
1989	110
1990	104
1991	118
1992	123
1993	129
1994	140
1995	112
1996	121
1997	152

Net Business Formations

Year	Number of Firms
1980	28
1981	2
1982	6
1983	22
1984	-5
1985	-15
1986	6
1987	23
1988	21
1989	-1
1990	23
1991	-8
1992	-17
1993	-15
1994	4
1995	5
1996	2
1997	-22

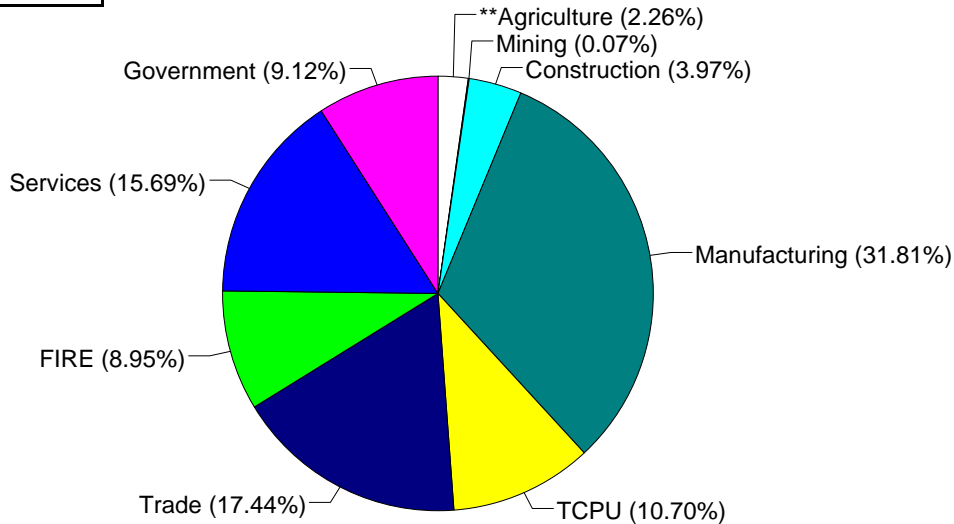
Source: Components of Business Change, Ohio Department of Development, Office of Strategic Research

Economic Structure

Total Value Added:  
\$1,311.28 million.

Value Added by Sector (1993)\*

Value Added is a broad measure of income that includes employee compensations, business profits, and returns to property, plant, and equipment.



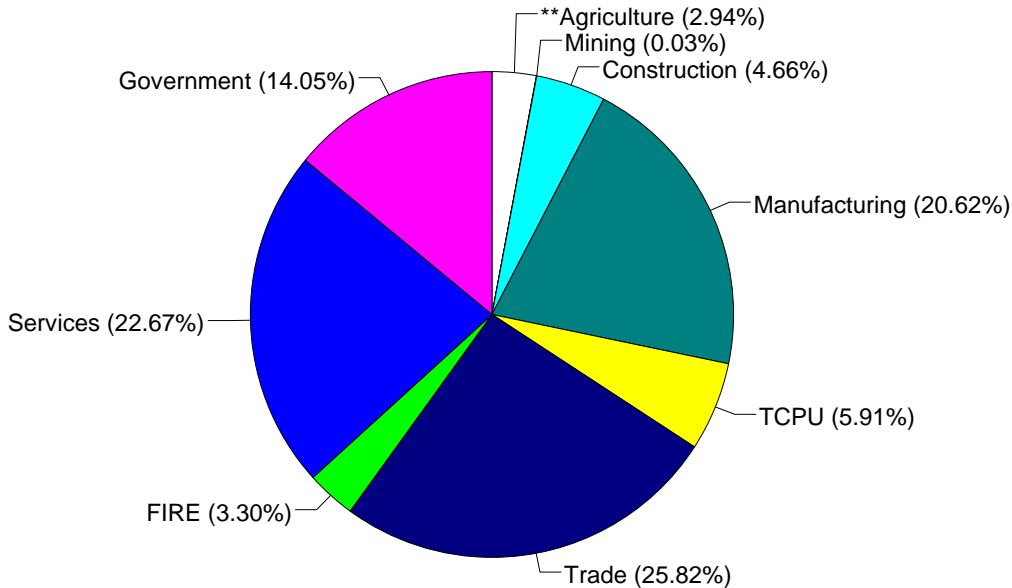
TCPU=Transportation, Communication, and Public Utilities.  
FIRE=Finance, Insurance, and Real Estate.

\*These estimates include many components not reported in other sources such as farms, self-employed, and small firms.

\*\*Agriculture/Fishing/Forestry sector includes production agriculture (farm), agricultural services, forestry, and fishing enterprises.

Total Employment:  
32,310 workers.

1993 Employment by Sector\*



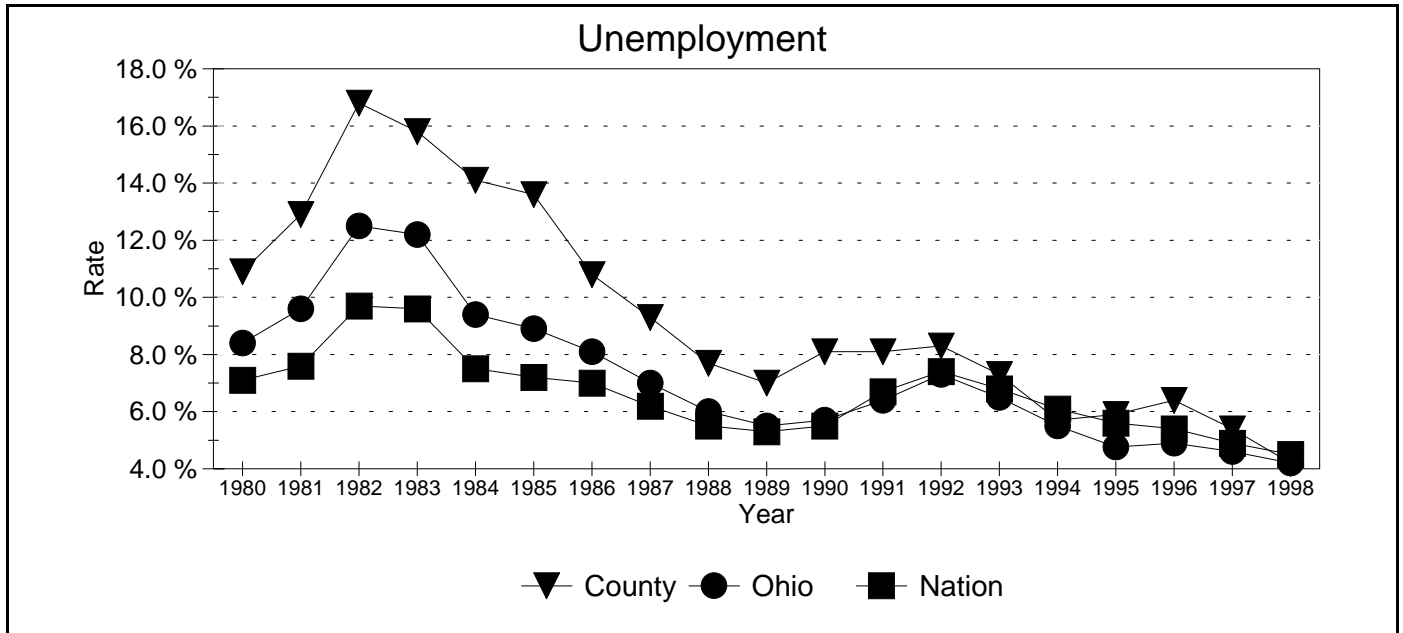
TCPU=Transportation, Communication, and Public Utilities.  
FIRE=Finance, Insurance, and Real Estate.

\*These estimates include many components not reported in other sources such as farms, self-employed, and small firms.

\*\*Agriculture/Fishing/Forestry sector includes production agriculture (farm), agricultural services, forestry, and fishing enterprises.

Source: 1993 IMPLAN database, Minnesota Implan Group. IMPLAN is a non-survey regional input-output account generator originally developed by the U.S. Forest Service. These estimates provide a full picture of the county's economy.

Unemployment Statistics



Source: Bureau of Labor Statistics

Commuting Statistics

Residents retained in Marion County: 21,603.

Residents of Neighboring Counties Working in Marion County, 1990

County of Residence	Number of Incommuters
Morrow	996
Wyandot	635
Crawford	562
Delaware	487
Franklin	469
Union	386
Hardin	184

Residents of Marion County Working in Neighboring Counties, 1990

County of Work	Number of Outcommuters
Franklin	1,215
Delaware	1,044
Union	1,010
Crawford	391
Morrow	355
Wyandot	231
Richland	134

Source: U.S. Census Bureau, 1990 Census Summary Tape File S-5.