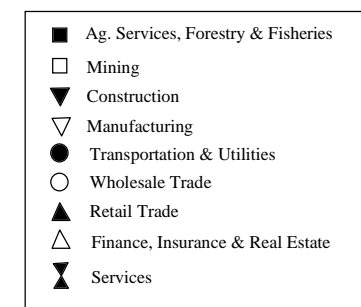
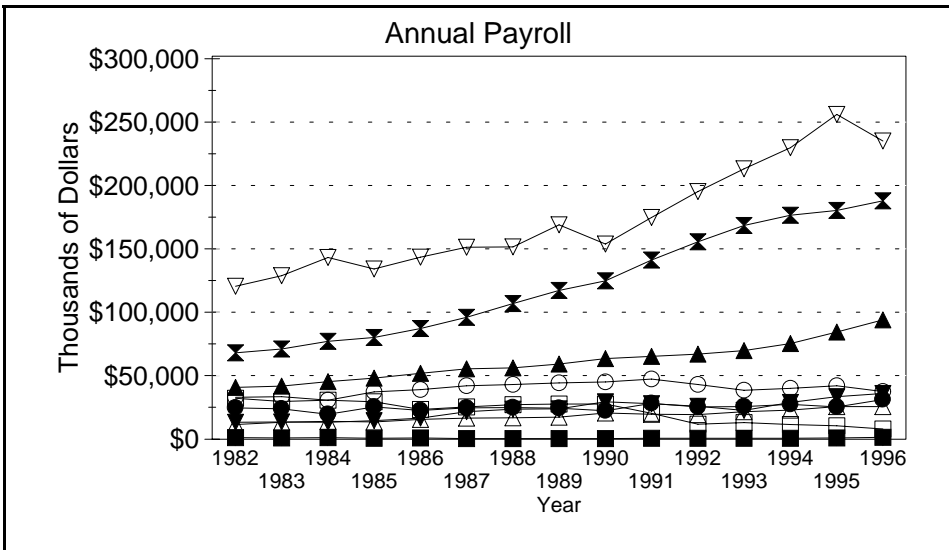
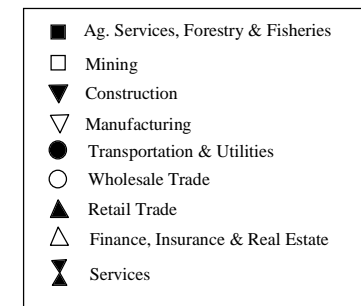
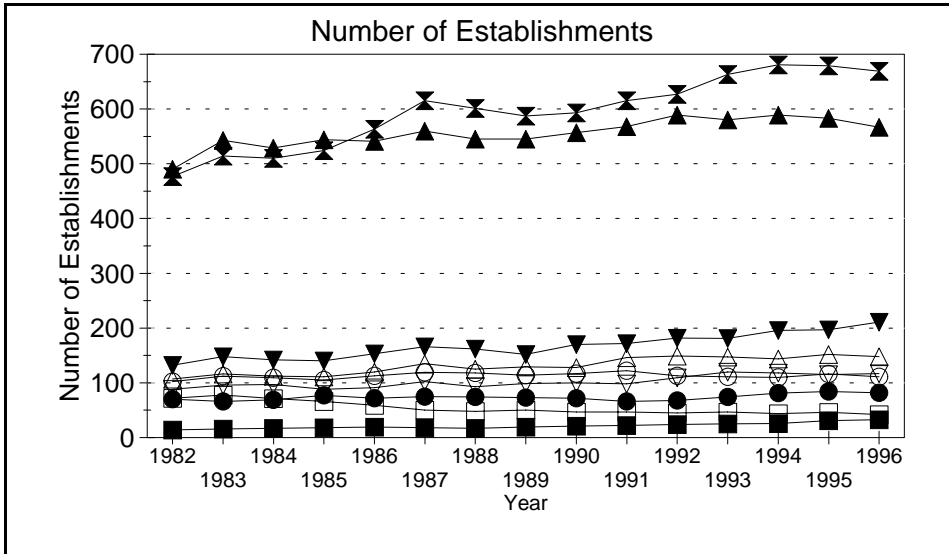
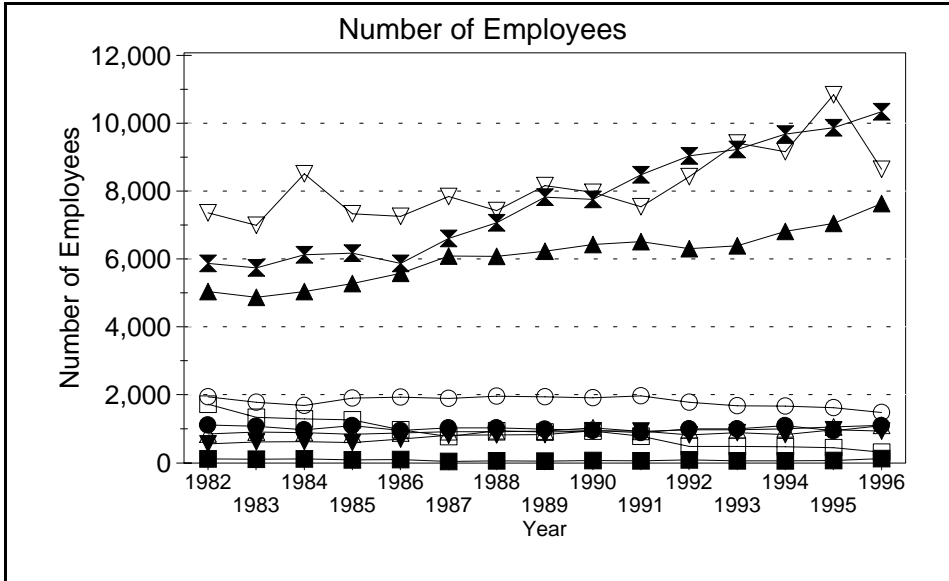


Business Statistics



Source: County Business Patterns, Ohio. These data are derived from all wage and salary employment covered by FICA which includes private non-farm employers and non-profit organizations, but does not include farms and the self employed.

Business Statistics

Number of Employees

Year	Ag. Services, Forestry, Fisheries*	Mining	Construction	Manufacturing	Transportation & Utilities	Wholesale Trade	Retail Trade	Finance, Insurance, Real Estate	Services	Not Classifiable	Total
1982	120	1,718	563	7,317	1,115	1,933	5,019	849	5,842	5	24,481
1983	114	1,335	619	6,959	1,076	1,776	4,846	912	5,714	35	23,386
1984	118	1,290	629	8,460	976	1,689	5,021	887	6,089	111	25,270
1985	96	1,265	599	7,291	1,097	1,899	5,247	839	6,145	227	24,705
1986	100	973	701	7,215	956	1,930	5,549	884	5,845	154	24,307
1987	51	773	811	7,798	1,033	1,888	6,059	915	6,575	21	25,924
1988	64	945	826	7,383	1,031	1,956	6,051	918	7,034	101	26,309
1989	53	907	835	8,119	993	1,934	6,200	937	7,777	179	27,934
1990	72	933	949	7,920	952	1,906	6,394	1,027	7,715	62	27,930
1991	70	783	938	7,500	889	1,965	6,480	931	8,434	29	28,019
1992	89	487	821	8,379	1,003	1,779	6,274	969	8,984	2	28,787
1993	66	487	892	9,363	997	1,678	6,358	977	9,176	16	30,010
1994	62	481	830	9,109	1,094	1,662	6,776	1,006	9,627	18	30,665
1995	78	450	970	10,772	948	1,616	7,009	1,061	9,810	4	32,718
1996	127	319	938	8,591	1,096	1,479	7,589	1,106	10,278	5	31,528

Number of Establishments

Year	Ag. Services, Forestry, Fisheries*	Mining	Construction	Manufacturing	Transportation & Utilities	Wholesale Trade	Retail Trade	Finance, Insurance, Real Estate	Services	Not Classifiable	Total
1982	14	72	132	88	70	102	490	107	477	16	1,568
1983	16	78	148	96	66	112	543	116	514	47	1,736
1984	17	71	142	97	69	109	529	112	510	117	1,773
1985	18	66	140	88	77	105	544	111	524	152	1,825
1986	19	59	153	91	72	113	541	120	563	122	1,853
1987	18	50	166	102	75	119	560	135	615	33	1,873
1988	17	48	162	93	74	118	545	125	601	98	1,881
1989	19	50	152	99	73	114	545	129	587	98	1,866
1990	21	47	170	100	72	117	557	128	593	82	1,887
1991	22	47	172	98	66	122	568	146	615	29	1,885
1992	24	45	182	109	68	113	589	149	627	13	1,919
1993	25	47	181	120	74	111	580	147	663	23	1,971
1994	26	44	196	118	81	110	589	144	681	17	2,006
1995	31	46	197	115	84	116	583	152	679	14	2,017
1996	33	42	211	117	82	111	567	148	669	5	1,985

Annual Payroll (Thousands of Dollars)

Year	Ag. Services, Forestry, Fisheries*	Mining	Construction	Manufacturing	Transportation & Utilities	Wholesale Trade	Retail Trade	Finance, Insurance, Real Estate	Services	Not Classifiable	Total
1982	1,140	32,006	13,173	119,896	24,595	32,925	40,596	11,411	67,654	68	343,464
1983	1,085	29,524	13,560	128,044	23,769	33,379	41,596	13,159	70,619	494	355,230
1984	1,345	30,607	13,398	142,420	19,665	30,454	45,050	14,076	76,718	1,735	375,468
1985	838	29,363	14,644	133,219	25,251	37,207	47,812	13,446	79,710	2,384	383,874
1986	1,009	23,204	16,423	142,703	22,494	38,942	51,508	15,660	86,675	2,409	401,028
1987	522	25,222	21,556	150,307	24,555	41,735	55,214	16,525	95,556	485	431,677
1988	524	27,024	23,492	150,566	24,891	42,776	55,854	16,807	106,248	2,345	450,527
1989	529	27,578	23,761	167,944	24,427	44,051	59,004	17,389	116,637	3,226	484,546
1990	579	27,680	29,410	152,944	22,190	44,814	63,236	20,469	124,093	835	486,250
1991	688	20,394	27,758	173,723	27,991	47,110	64,879	19,673	140,331	703	523,250
1992	821	11,822	25,745	194,022	25,314	42,873	66,767	19,295	154,626	107	541,392
1993	773	13,056	22,597	211,709	25,636	38,408	69,459	21,679	167,310	185	570,812
1994	777	11,640	28,841	228,381	27,368	39,845	74,996	22,846	175,344	133	610,171
1995	950	10,575	33,267	254,502	25,277	41,796	83,858	25,489	179,129	148	654,991
1996	1,419	7,914	35,768	233,671	31,018	37,447	93,487	25,652	186,833	35	653,244

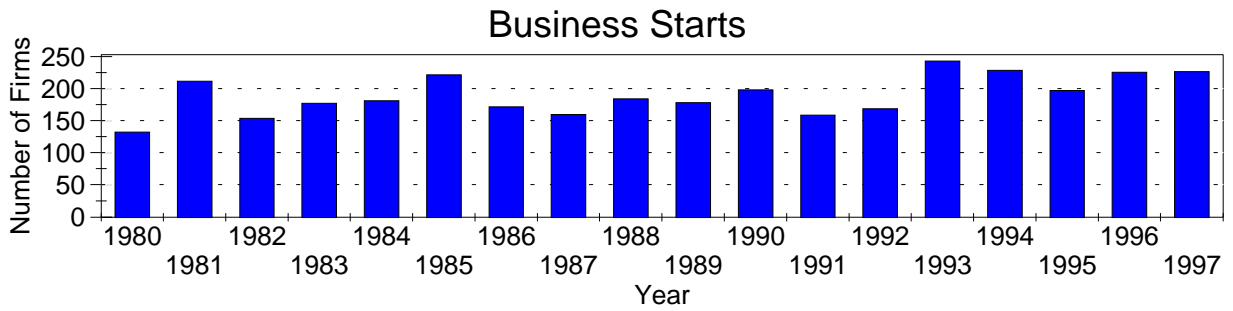
A=0-19, B=20-99, C=100-249, D=figures withheld, E=250-499,

F=500-999, G=1,000-2,499, H=2,500-4,999, I=5,000-9,999,

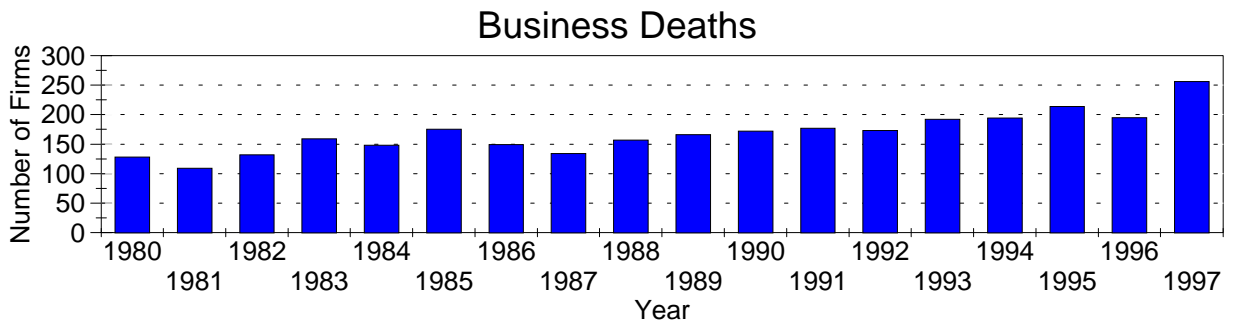
J=10,000-24,999, K=25,000-49,999, L=50,000-99,999, M=100,000 or more

*Ag. Services, Forestry & Fisheries include only non-farm businesses.

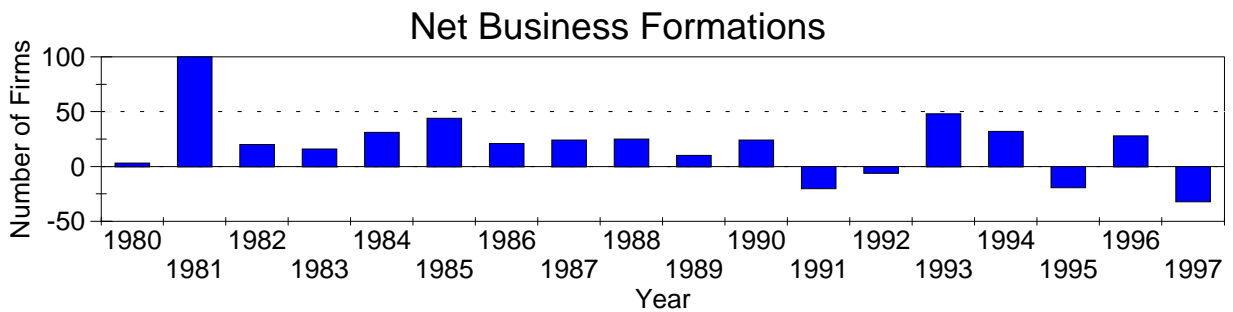
Business Statistics



Business starts and business deaths are determined from workers compensation records.



Business starts less business deaths equal net business formations.



Business Starts

Year	Number of Firms
1980	131
1981	209
1982	152
1983	175
1984	179
1985	219
1986	170
1987	158
1988	182
1989	176
1990	196
1991	157
1992	167
1993	240
1994	226
1995	195
1996	223
1997	224

Business Deaths

Year	Number of Firms
1980	128
1981	109
1982	132
1983	159
1984	148
1985	175
1986	149
1987	134
1988	157
1989	166
1990	172
1991	177
1992	173
1993	192
1994	194
1995	214
1996	195
1997	256

Net Business Formations

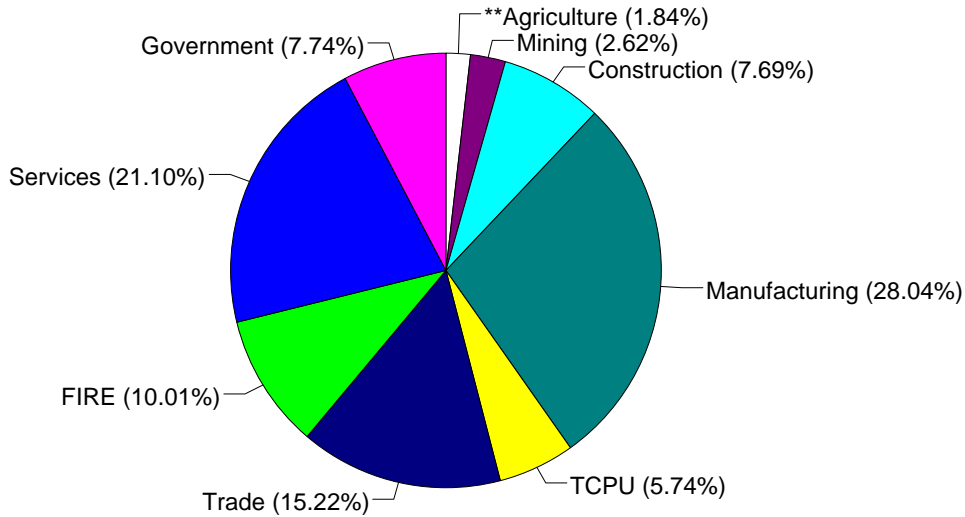
Year	Number of Firms
1980	3
1981	100
1982	20
1983	16
1984	31
1985	44
1986	21
1987	24
1988	25
1989	10
1990	24
1991	-20
1992	-6
1993	48
1994	32
1995	-19
1996	28
1997	-32

Source: Components of Business Change, Ohio Department of Development, Office of Strategic Research

Economic Structure

Total Value Added:
\$1,568.42 million.

Value Added by Sector (1993)*



Value Added is a broad measure of income that includes employee compensations, business profits, and returns to property, plant, and equipment.

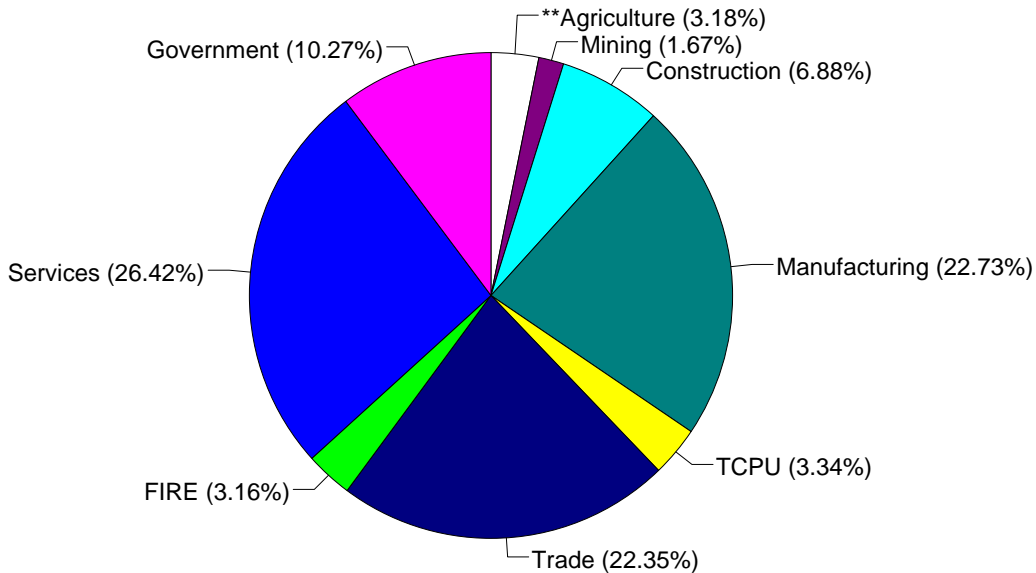
TCPU=Transportation, Communication, and Public Utilities.
FIRE=Finance, Insurance, and Real Estate.

*These estimates include many components not reported in other sources such as farms, self-employed, and small firms.

**Agriculture/Fishing/Forestry sector includes production agriculture (farm), agricultural services, forestry, and fishing enterprises.

Total Employment:
43,828 workers.

1993 Employment by Sector*



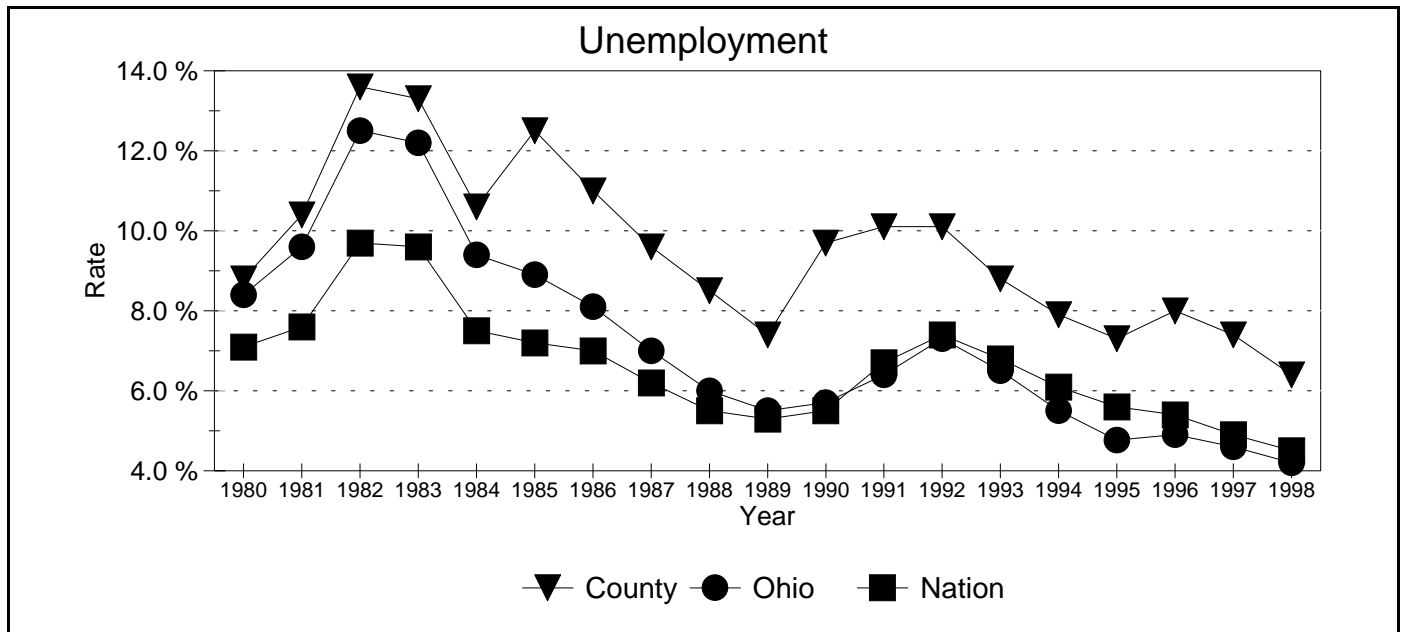
TCPU=Transportation, Communication, and Public Utilities.
FIRE=Finance, Insurance, and Real Estate.

*These estimates include many components not reported in other sources such as farms, self-employed, and small firms.

**Agriculture/Fishing/Forestry sector includes production agriculture (farm), agricultural services, forestry, and fishing enterprises.

Source: 1993 IMPLAN database, Minnesota Implan Group. IMPLAN is a non-survey regional input-output account generator originally developed by the U.S. Forest Service. These estimates provide a full picture of the county's economy.

Unemployment Statistics



Source: Bureau of Labor Statistics

Commuting Statistics

Residents retained in Muskingum County: 28,676.

Residents of Neighboring Counties Working in Muskingum County, 1990

County of Residence	Number of Incommuters
Perry	1,330
Guernsey	929
Coshocton	656
Licking	606
Morgan	398
Franklin	147
Noble	132

Residents of Muskingum County Working in Neighboring Counties, 1990

County of Work	Number of Outcommuters
Licking	1,524
Guernsey	966
Franklin	954
Coshocton	653
Perry	511
Morgan	193
Fairfield	143

Source: U.S. Census Bureau, 1990 Census Summary Tape File S-5.