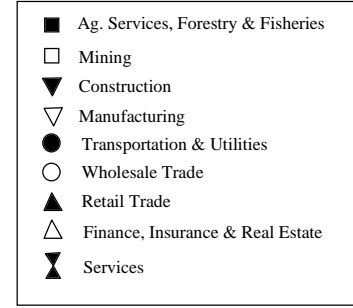
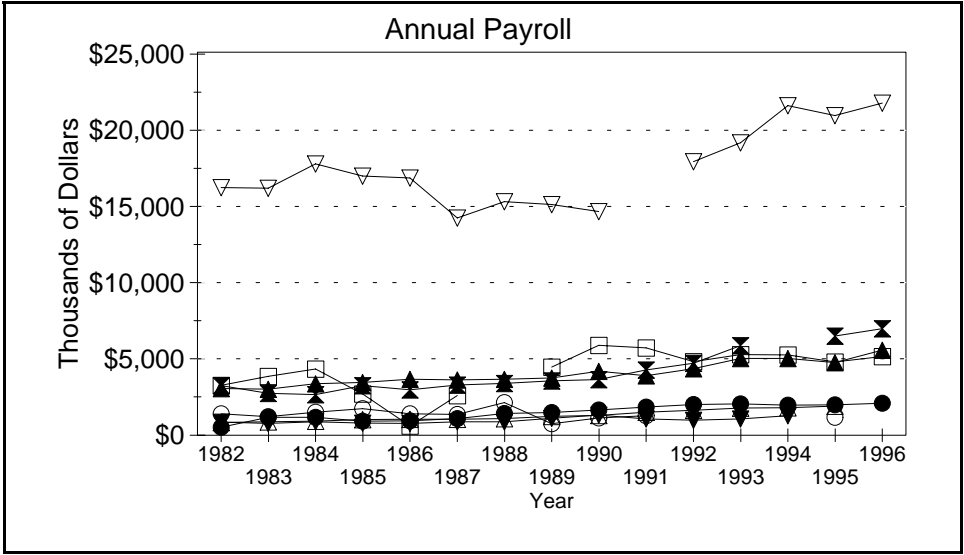
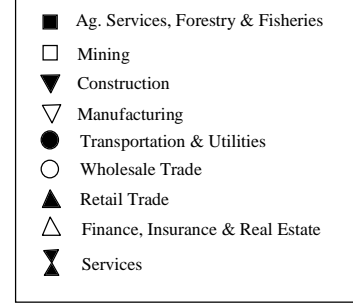
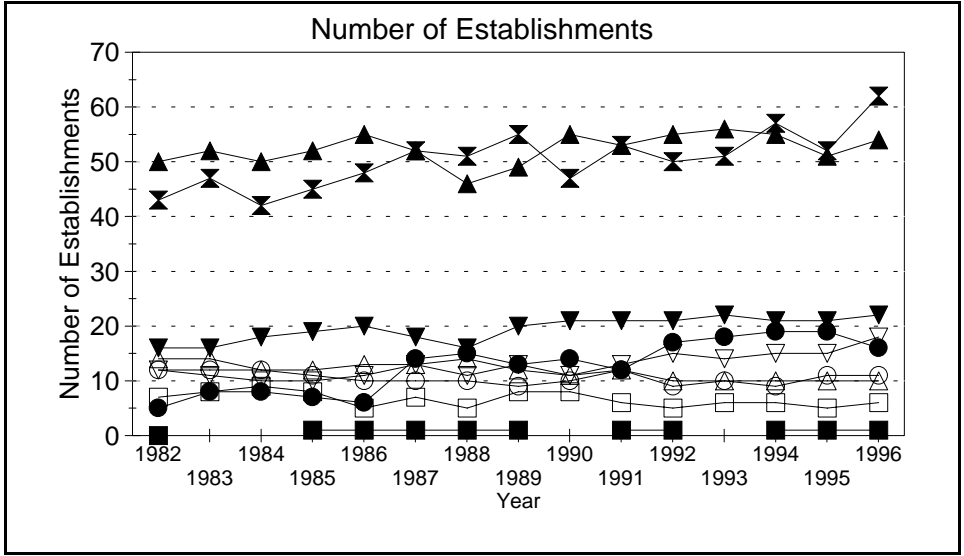
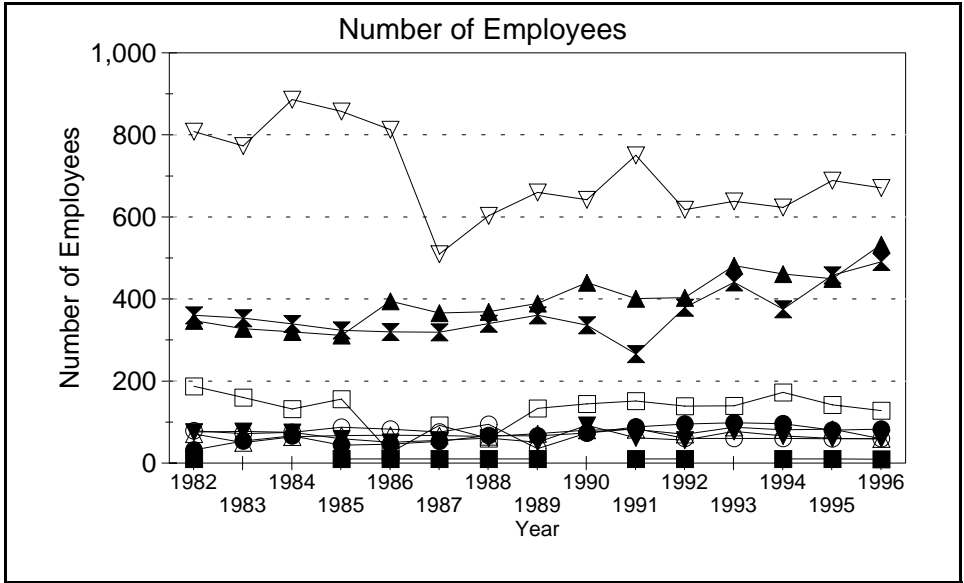


Business Statistics



Source: County Business Patterns, Ohio. These data are derived from all wage and salary employment covered by FICA which includes private non-farm employers and non-profit organizations, but does not include farms and the self employed.

Business Statistics

Number of Employees

Year	Ag. Services, Forestry, Fisheries*	Mining	Construction	Manufacturing	Transportation & Utilities	Wholesale Trade	Retail Trade	Finance, Insurance, Real Estate	Services	Not Classifiable	Total
1982	A	187	76	808	32	79	347	71	360	A	1,962
1983		160	77	773	54	72	328	50	353	1	1,868
1984		132	75	886	66	75	320	64	339	7	1,964
1985	A	156	59	857	44	87	311	67	324	B	1,933
1986	A	26	51	813	46	83	395	68	320	A	1,807
1987	A	92	55	509	53	76	366	67	319	A	1,539
1988	A	B	61	603	67	94	369	65	340	11	1,708
1989	A	133	51	660	66	35	389	72	360	A	1,777
1990		144	92	642	73	73	440	80	336	1	1,881
1991	A	151	62	F	88	84	401	82	266	2	1,933
1992	A	139	56	618	95	B	403	70	379	A	1,796
1993		140	77	638	98	B	481	87	441	A	2,000
1994	A	172	66	623	96	B	461	81	E		1,962
1995	A	142	B	689	80	59	449	83	458		2,028
1996	A	128	B	671	83	B	533	B	491		2,109

Number of Establishments

Year	Ag. Services, Forestry, Fisheries*	Mining	Construction	Manufacturing	Transportation & Utilities	Wholesale Trade	Retail Trade	Finance, Insurance, Real Estate	Services	Not Classifiable	Total
1982	0	7	16	12	5	12	50	14	43	2	161
1983		8	16	11	8	12	52	14	47	3	171
1984		9	18	10	8	12	50	12	42	12	173
1985	1	8	19	10	7	11	52	12	45	12	177
1986	1	5	20	11	6	10	55	13	48	11	180
1987	1	7	18	13	14	10	52	13	52	6	186
1988	1	5	16	11	15	10	46	14	51	15	184
1989	1	8	20	13	13	9	49	12	55	11	191
1990		8	21	11	14	10	55	11	47	7	184
1991	1	6	21	13	12	12	53	12	53	4	187
1992	1	5	21	15	17	9	55	10	50	2	185
1993		6	22	14	18	10	56	10	51	2	189
1994	1	6	21	15	19	9	55	10	57		193
1995	1	5	21	15	19	11	51	10	52		185
1996	1	6	22	18	16	11	54	10	62		200

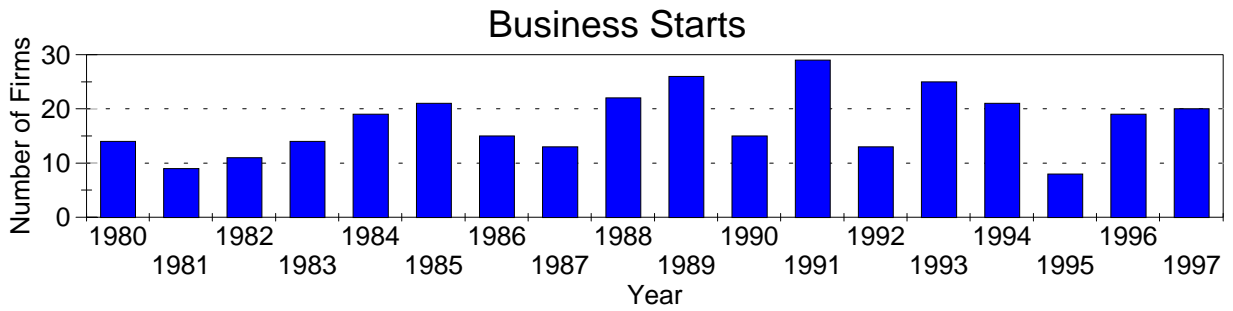
Annual Payroll (Thousands of Dollars)

Year	Ag. Services, Forestry, Fisheries*	Mining	Construction	Manufacturing	Transportation & Utilities	Wholesale Trade	Retail Trade	Finance, Insurance, Real Estate	Services	Not Classifiable	Total
1982	D	3,262	852	16,160	524	1,399	3,044	845	3,232	D	29,341
1983		3,844	772	16,129	1,171	1,213	3,004	876	2,732	26	29,768
1984		4,315	876	17,718	1,179	1,513	3,353	913	2,659	106	32,632
1985	D	2,695	785	16,911	909	1,737	3,450	1,018	3,245	D	30,899
1986	D	600	773	16,789	946	1,404	3,646	1,037	2,974	D	28,275
1987	D	2,587	870	14,187	1,090	1,354	3,609	1,044	3,284	D	28,062
1988	D	D	867	15,250	1,427	2,128	3,658	1,086	3,392	99	30,786
1989	D	4,446	1,103	15,065	1,486	743	3,747	1,225	3,554	D	31,474
1990		5,873	1,311	14,590	1,660	1,123	4,167	1,295	3,624	20	33,663
1991	D	5,699	1,061	D	1,833	1,271	3,883	1,502	4,269	43	41,759
1992	D	4,813	976	17,863	2,000	D	4,339	1,633	4,706	D	36,971
1993		5,270	1,072	19,094	2,050	D	5,014	1,779	5,838	D	40,804
1994	D	5,233	1,274	21,507	1,971	D	5,015	1,790	D		43,321
1995	D	4,789	D	20,870	1,986	1,179	4,736	1,891	6,478		43,104
1996	D	5,131	D	21,669	2,094	D	5,550	D	6,953		45,897

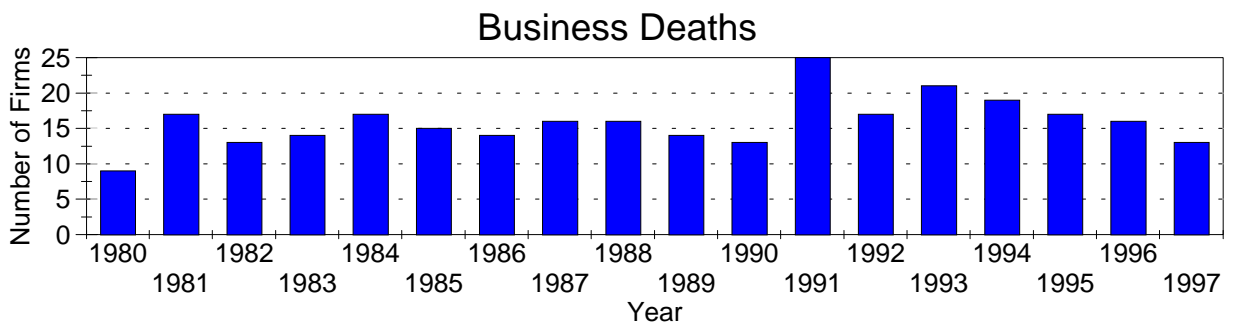
A=0-19, B=20-99, C=100-249, D=figures withheld, E=250-499,  
 F=500-999, G=1,000-2,499, H=2,500-4,999, I=5,000-9,999,  
 J=10,000-24,999, K=25,000-49,999, L=50,000-99,999, M=100,000 or more

\*Ag. Services, Forestry & Fisheries include only non-farm businesses.

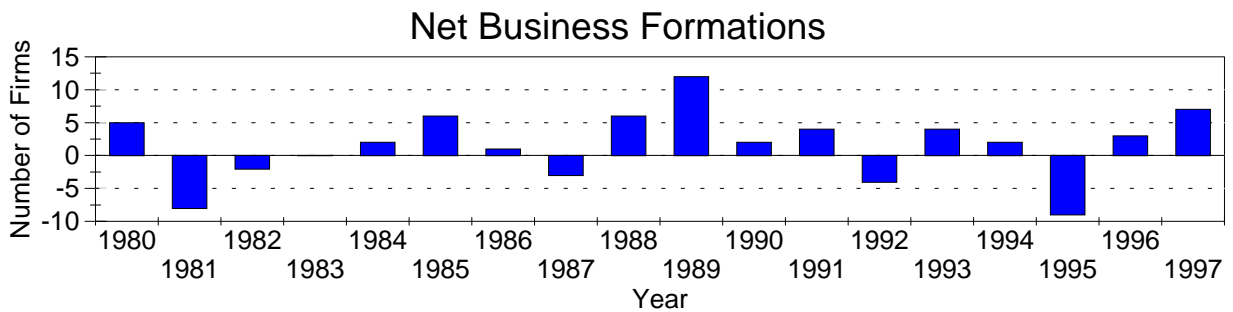
Business Statistics



Business starts and business deaths are determined from workers compensation records.



Business starts less business deaths equal net business formations.



Business Starts

Year	Number of Firms
1980	14
1981	9
1982	11
1983	14
1984	19
1985	21
1986	15
1987	13
1988	22
1989	26
1990	15
1991	29
1992	13
1993	25
1994	21
1995	8
1996	19
1997	20

Business Deaths

Year	Number of Firms
1980	9
1981	17
1982	13
1983	14
1984	17
1985	15
1986	14
1987	16
1988	16
1989	14
1990	13
1991	25
1992	17
1993	21
1994	19
1995	17
1996	16
1997	13

Net Business Formations

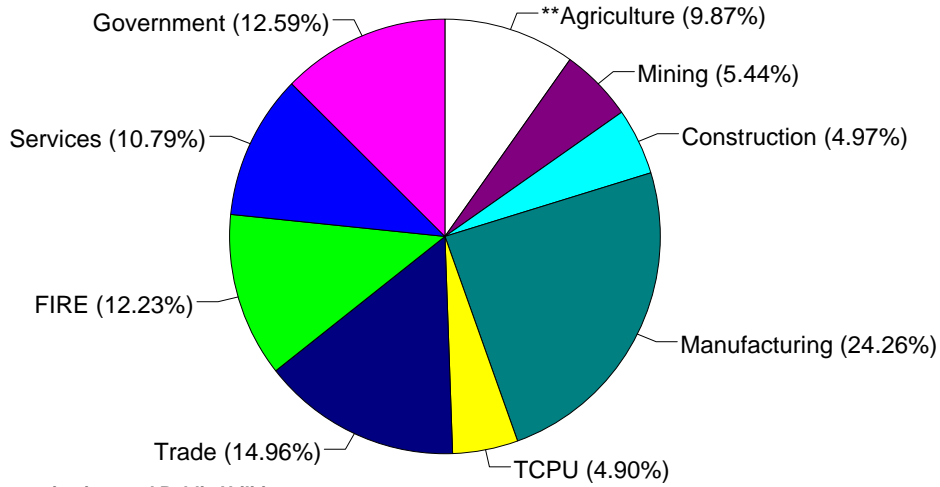
Year	Number of Firms
1980	5
1981	-8
1982	-2
1983	0
1984	2
1985	6
1986	1
1987	-3
1988	6
1989	12
1990	2
1991	4
1992	-4
1993	4
1994	2
1995	-9
1996	3
1997	7

Source: Components of Business Change, Ohio Department of Development, Office of Strategic Research

Economic Structure

Total Value Added:  
\$127.56 million.

Value Added by Sector (1993)\*



Value Added is a broad measure of income that includes employee compensations, business profits, and returns to property, plant, and equipment.

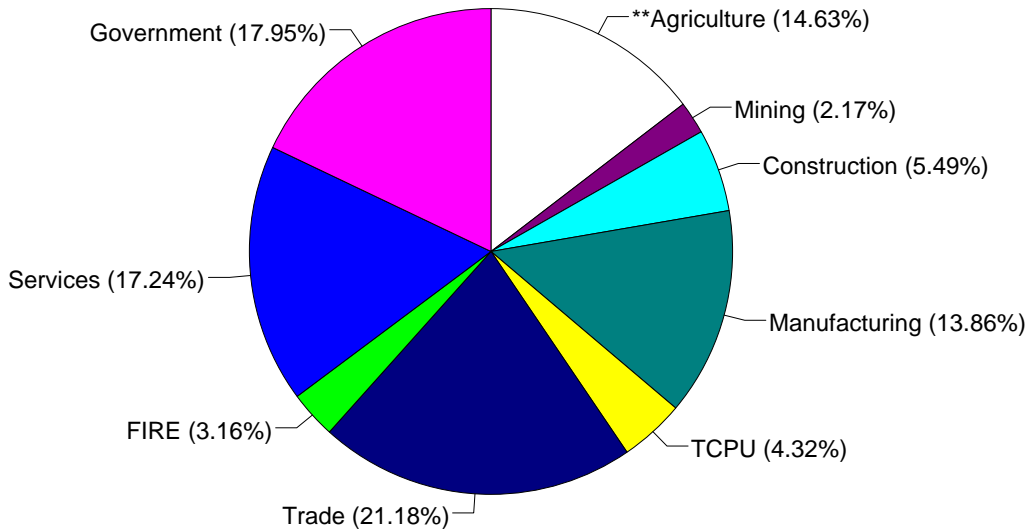
TCPU=Transportation, Communication, and Public Utilities.  
FIRE=Finance, Insurance, and Real Estate.

\*These estimates include many components not reported in other sources such as farms, self-employed, and small firms.

\*\*Agriculture/Fishing/Forestry sector includes production agriculture (farm), agricultural services, forestry, and fishing enterprises.

Total Employment:  
3,956 workers.

1993 Employment by Sector\*



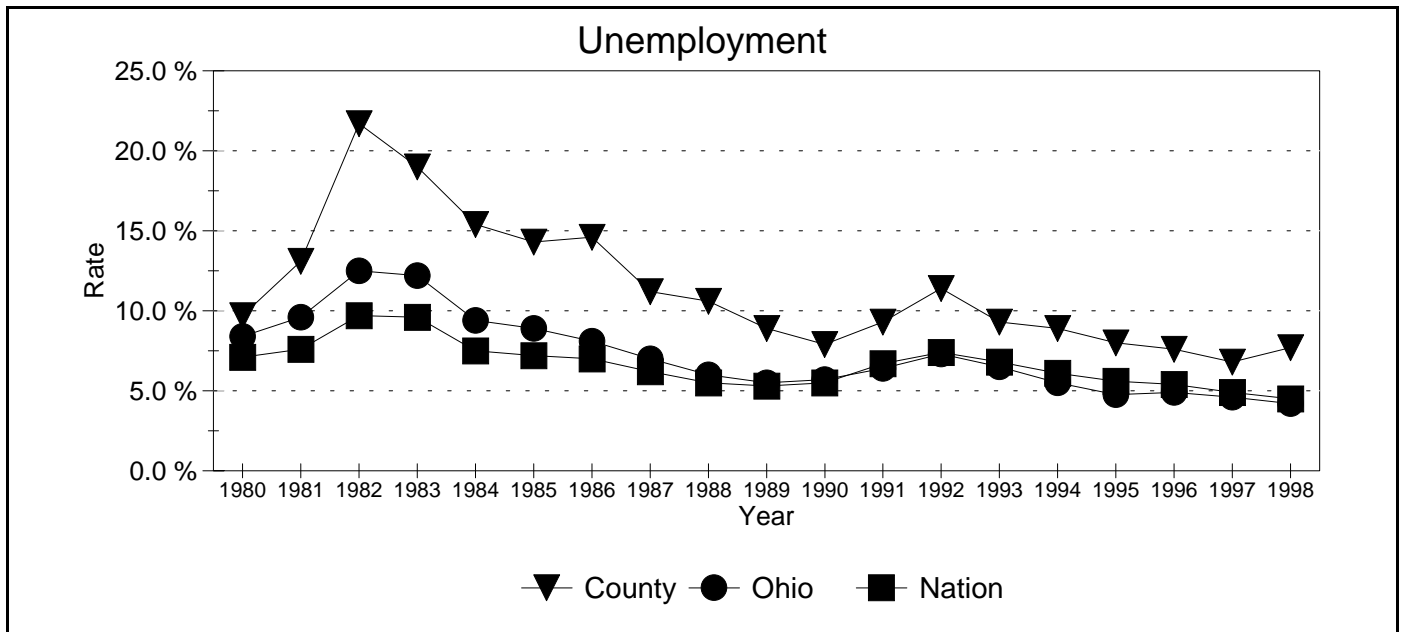
TCPU=Transportation, Communication, and Public Utilities.  
FIRE=Finance, Insurance, and Real Estate.

\*These estimates include many components not reported in other sources such as farms, self-employed, and small firms.

\*\*Agriculture/Fishing/Forestry sector includes production agriculture (farm), agricultural services, forestry, and fishing enterprises.

Source: 1993 IMPLAN database, Minnesota Implan Group. IMPLAN is a non-survey regional input-output account generator originally developed by the U.S. Forest Service. These estimates provide a full picture of the county's economy.

Unemployment Statistics



Source: Bureau of Labor Statistics

Commuting Statistics

Residents retained in Noble County:  
2,308.

Residents of Neighboring Counties Working in Noble County, 1990

County of Residence	Number of Incommuters
Guernsey	224
Washington	166
Monroe	44
Belmont	35
Muskingum	22
Franklin	18
Lake	17

Residents of Noble County Working in Neighboring Counties, 1990

County of Work	Number of Outcommuters
Guernsey	974
Washington	399
Muskingum	132
Belmont	75
Tuscarawas	46
Wood (WV)	32
Monroe	27

Source: U.S. Census Bureau, 1990 Census Summary Tape File S-5.