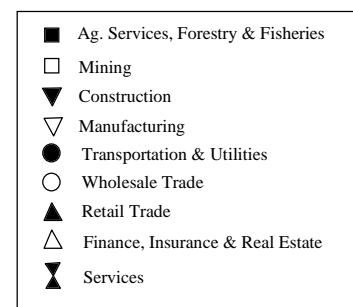
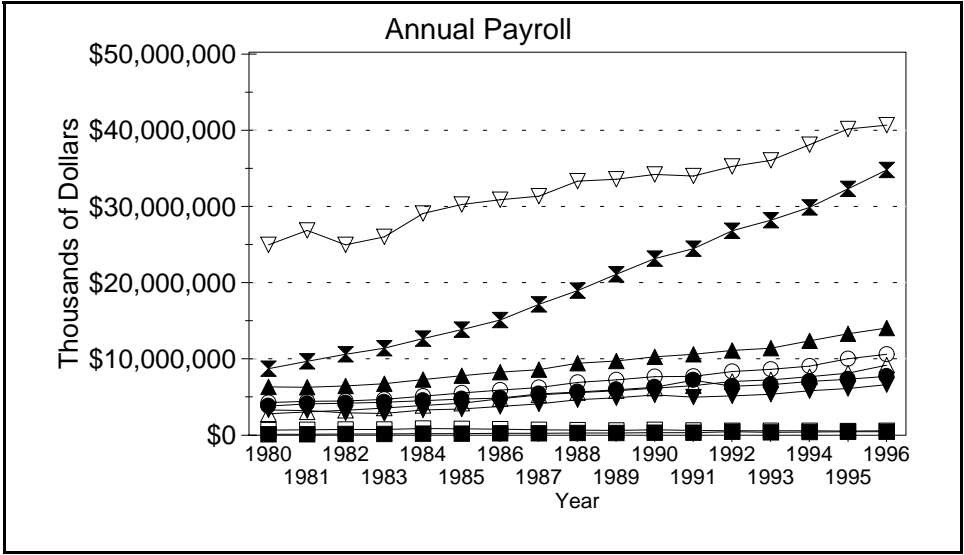
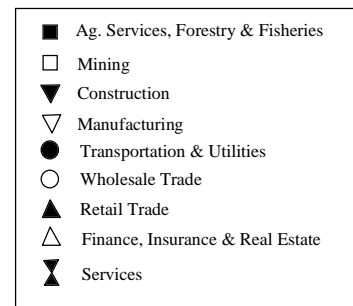
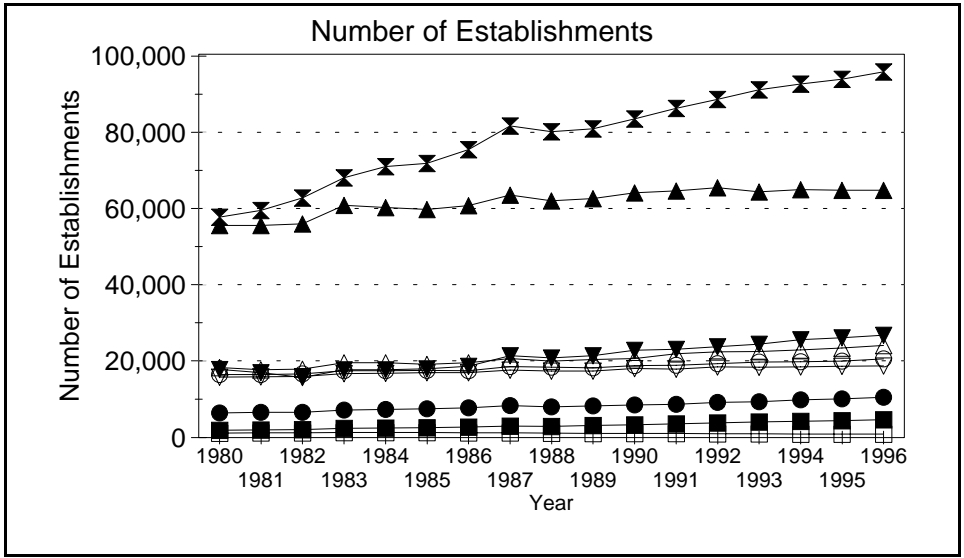
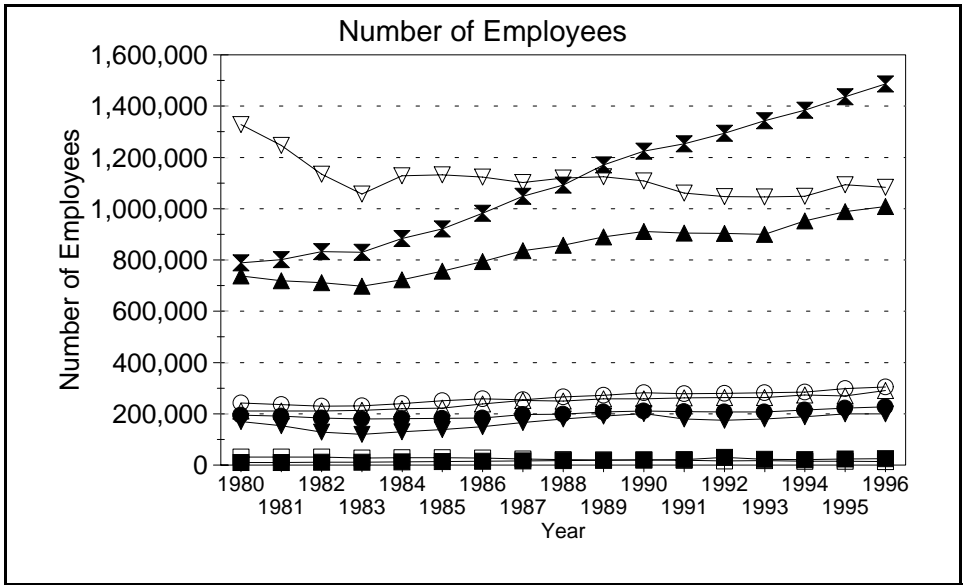


Business Statistics



Source: County Business Patterns. These data are derived from all wage and salary employment covered by FICA which includes private non-farm employers and non-profit organizations, but does not include farms and the self employed.

Business Statistics

Number of Employees:

Year	Ag. Services, Forestry, Fisheries*	Mining	Construction	Manufacturing	Transportation & Utilities	Wholesale Trade	Retail Trade	Finance, Insurance, Real Estate	Services	Not Classifiable	Total
1982	11,057	30,782	128,220	1,133,998	183,251	229,275	710,854	210,373	831,826	3,075	3,472,711
1983	11,787	27,799	119,724	1,056,880	179,621	230,451	697,125	212,823	829,741	10,662	3,376,613
1984	12,880	29,258	129,576	1,128,424	180,671	239,864	723,199	219,327	883,968	26,964	3,574,131
1985	14,044	28,713	138,696	1,131,797	181,779	250,568	755,910	222,247	921,290	31,980	3,677,024
1986	14,940	26,947	149,492	1,123,722	183,872	258,004	794,336	238,289	982,211	26,320	3,998,133
1987	16,775	23,179	166,551	1,101,972	197,596	255,149	836,531	252,435	1,048,729	6,114	3,905,031
1988	17,588	21,466	179,854	1,119,170	198,938	265,280	857,555	249,559	1,091,724	19,394	4,020,528
1989	19,182	20,014	190,389	1,124,191	206,818	272,309	889,389	257,783	1,170,409	28,803	4,179,287
1990	20,144	20,331	200,526	1,107,813	211,323	281,512	910,767	258,327	1,224,309	10,925	4,245,977
1991	20,886	18,130	180,304	1,061,234	208,601	278,018	905,359	261,870	1,252,518	4,837	4,191,757
1992	29,613	15,938	175,314	1,046,964	206,746	279,525	903,431	263,580	1,293,728	1,358	4,216,197
1993	22,033	16,888	180,108	1,046,039	207,103	282,033	899,845	263,324	1,343,487	2,388	4,263,248
1994	21,162	15,427	188,454	1,048,371	214,946	284,658	952,095	272,730	1,384,551	3,217	4,385,611
1995	23,124	14,447	200,139	1,093,560	222,686	298,491	988,550	270,106	1,436,027	3,460	4,550,590
1996	24,772	13,990	200,216	1,083,429	227,107	304,975	1,008,037	290,623	1,486,095	1,127	4,640,371

Number of Establishment:

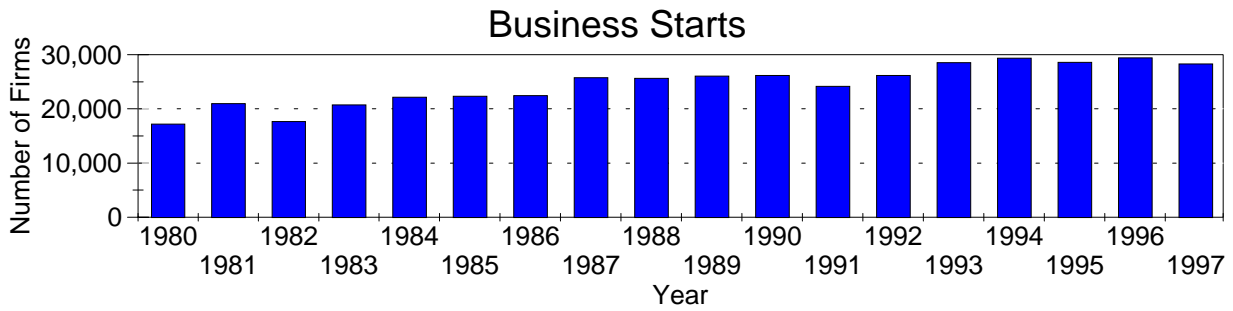
Year	Ag. Services, Forestry, Fisheries*	Mining	Construction	Manufacturing	Transportation & Utilities	Wholesale Trade	Retail Trade	Finance, Insurance, Real Estate	Services	Not Classifiable	Total
1982	2,070	1,268	15,666	15,976	6,619	16,610	55,777	17,854	62,482	2,577	196,899
1983	2,422	1,349	17,668	16,697	7,204	17,485	60,639	19,542	67,814	8,743	219,563
1984	2,514	1,341	17,683	16,771	7,366	17,408	60,057	19,569	70,721	14,116	227,546
1985	2,578	1,341	17,929	16,915	7,542	17,545	59,545	19,135	71,516	16,865	230,911
1986	2,719	1,286	18,577	16,952	7,729	17,452	60,480	19,539	75,149	15,000	234,883
1987	3,014	1,221	21,401	17,598	8,341	18,524	63,266	20,624	81,267	4,621	239,877
1988	2,944	1,166	20,751	17,349	7,990	18,372	61,750	19,918	79,825	13,203	243,268
1989	3,189	1,114	21,370	17,395	8,233	18,237	62,379	20,399	80,513	13,620	246,449
1990	3,374	1,102	22,771	18,017	8,482	18,766	63,892	20,602	83,171	8,517	248,694
1991	3,607	1,066	23,012	17,884	8,646	18,861	64,380	21,846	85,887	4,357	249,546
1992	3,871	989	23,709	18,470	9,209	19,243	65,231	22,378	88,256	2,600	253,956
1993	4,049	964	24,358	18,395	9,388	19,682	64,123	22,494	90,708	2,483	256,644
1994	4,255	959	25,576	18,406	9,852	19,796	64,678	22,898	92,276	2,079	260,775
1995	4,454	931	26,048	18,647	10,092	19,982	64,551	23,339	93,469	2,226	263,739
1996	4,643	890	26,688	18,726	10,559	20,518	64,525	24,056	95,440	882	266,927

Annual Payroll (Thousands of Dollars)

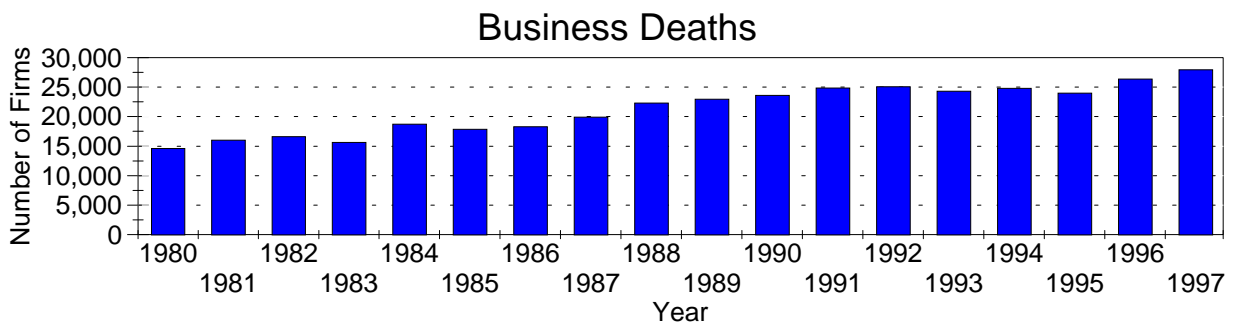
Year	Ag. Services, Forestry, Fisheries*	Mining	Construction	Manufacturing	Transportation & Utilities	Wholesale Trade	Retail Trade	Finance, Insurance, Real Estate	Services	Not Classifiable	Total
1982	150,987	740,007	2,923,865	24,867,867	4,157,145	4,478,805	6,424,069	3,256,931	10,556,332	39,315	57,595,321
1983	168,725	752,493	2,853,456	25,886,866	4,302,503	4,675,482	6,732,497	3,565,181	11,350,594	436,659	60,724,456
1984	191,981	868,628	3,284,537	28,946,446	4,526,687	5,104,361	7,278,715	3,867,788	12,627,123	368,870	67,065,134
1985	213,561	827,949	3,443,869	30,124,546	4,712,213	5,514,947	7,785,526	4,164,847	13,766,498	453,882	71,007,838
1986	234,620	797,479	3,738,816	30,727,383	4,864,575	5,895,827	8,242,421	4,776,448	15,036,830	451,297	74,765,696
1987	265,450	722,153	4,113,119	31,213,482	5,404,213	6,208,349	8,569,432	5,265,045	17,074,219	126,219	78,961,681
1988	289,692	688,903	4,642,174	33,179,028	5,626,661	6,899,520	9,399,283	5,550,533	18,870,702	461,098	85,607,594
1989	310,797	639,906	4,873,015	33,426,076	5,926,499	7,210,924	9,695,292	5,810,046	20,998,696	532,703	89,423,954
1990	334,006	713,910	5,250,326	34,037,578	6,260,967	7,629,302	10,253,494	6,133,543	23,047,343	236,846	93,897,315
1991	339,089	634,562	4,968,258	33,843,999	7,200,735	7,683,034	10,550,021	6,483,410	24,340,138	124,191	96,167,437
1992	449,442	586,344	5,135,499	35,069,758	6,390,335	8,328,444	11,084,619	7,001,691	26,672,461	50,829	100,769,422
1993	373,650	603,679	5,366,790	35,873,954	6,607,168	8,592,230	11,369,486	7,236,221	28,051,724	35,893	104,110,795
1994	425,609	601,807	5,820,755	37,944,370	6,997,018	9,025,962	12,325,343	7,653,792	29,746,093	43,264	110,584,013
1995	447,765	528,968	6,101,587	39,986,306	7,293,503	7,293,503	13,229,926	8,107,899	32,158,300	43,882	117,901,764
1996	473,635	570,874	6,593,622	4,0462,006	7,666,734	1,0557,900	14,001,385	9,161,073	34,648,189	16,452	124,151,870

*Ag. Services, Forestry & Fisheries include only non-farm businesses.

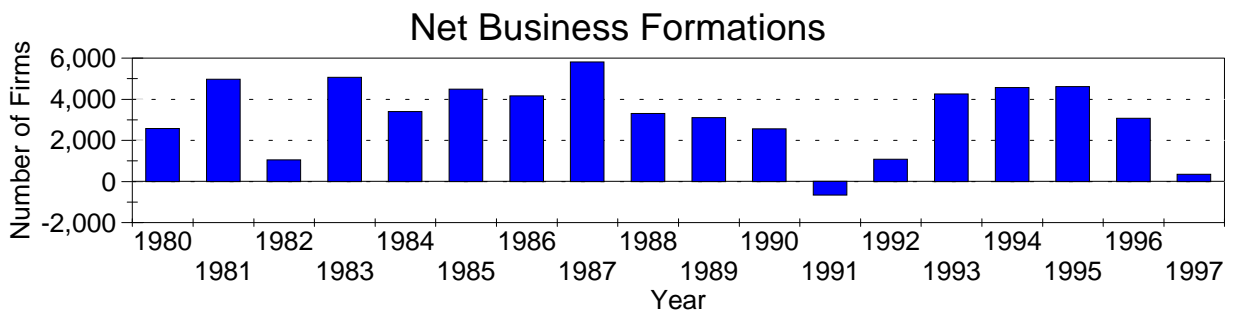
Business Statistics



Business starts and business deaths are determined from workers compensation records.



Business starts less business deaths equal net business formations.



Business Starts

Year	Number of Firms
1980	17,167
1981	20,984
1982	17,657
1983	20,700
1984	22,130
1985	22,337
1986	22,422
1987	25,719
1988	25,636
1989	26,044
1990	26,176
1991	24,183
1992	26,147
1993	28,547
1994	29,349
1995	28,576
1996	29,435

Business Deaths

Year	Number of Firms
1980	14,590
1981	16,016
1982	16,609
1983	15,628
1984	18,737
1985	17,849
1986	18,262
1987	19,903
1988	22,323
1989	22,933
1990	23,617
1991	24,828
1992	25,065
1993	24,287
1994	24,788
1995	23,958
1996	26,359
1997	27,920

Net Business Formations

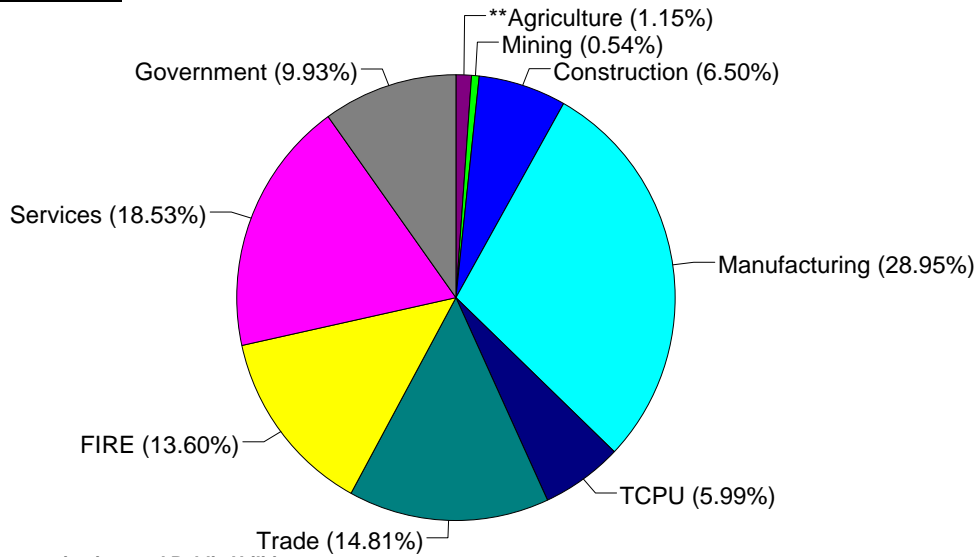
Year	Number of Firms
1980	2,577
1981	4,968
1982	1,048
1983	5,072
1984	3,393
1985	4,488
1986	4,160
1987	5,816
1988	3,313
1989	3,111
1990	2,559
1991	(645)
1992	1,082
1993	4,260
1994	4,561
1995	4,618
1996	3,076
1997	345

Economic Structure

Total Value Added:
\$257,181.72 million.

Value Added by Sector (1993)*

Value Added is a broad measure of income that includes employee compensations, business profits, and returns to property, plant, and equipment.



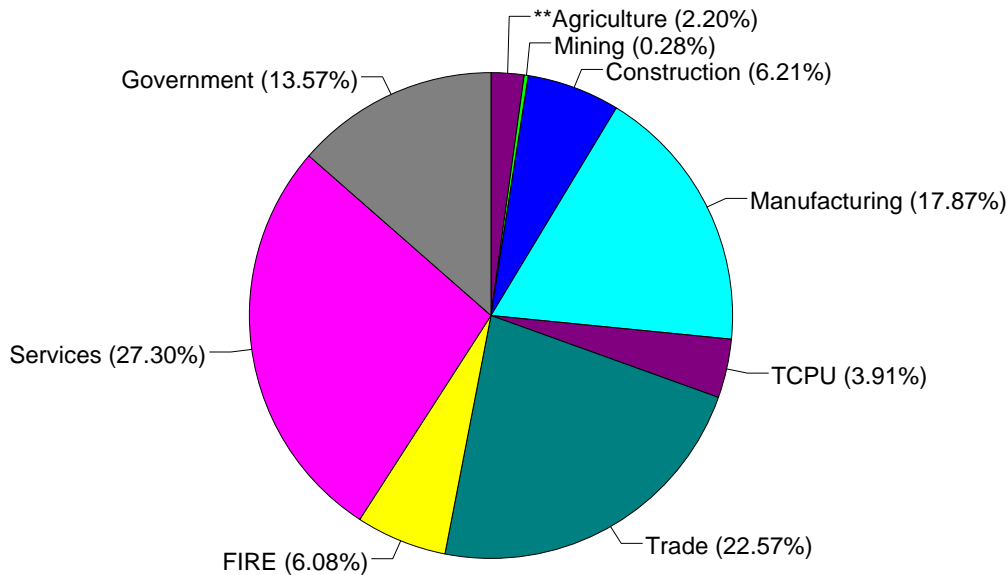
TCPU=Transportation, Communication, and Public Utilities.
FIRE=Finance, Insurance, and Real Estate.

*These estimates include many components not reported in other sources such as farms, self-employed, and small firms.

**Agriculture/Fishing/Forestry sector includes production agriculture (farm), agricultural services, forestry, and fishing enterprises.

Total Employment:
5,992,898 workers.

1993 Employment by Sector*



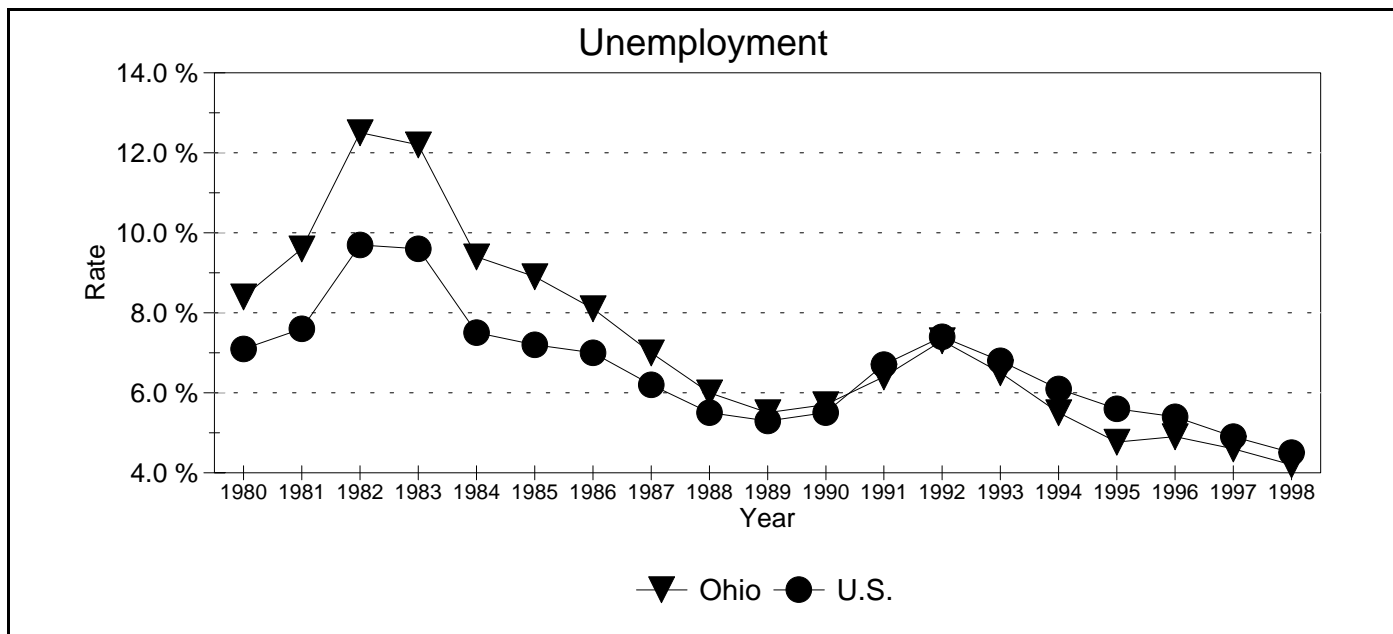
TCPU=Transportation, Communication, and Public Utilities.
FIRE=Finance, Insurance, and Real Estate.

*These estimates include many components not reported in other sources such as farms, self-employed, and small firms.

**Agriculture/Fishing/Forestry sector includes production agriculture (farm), agricultural services, forestry, and fishing enterprises.

Source: 1993 IMPLAN database, Minnesota Implan Group. IMPLAN is a non-survey regional input-output account generator originally developed by the U.S. Forest Service. These estimates provide a full picture of the county's economy.

Unemployment Statistics



Source: Bureau of Labor Statistics