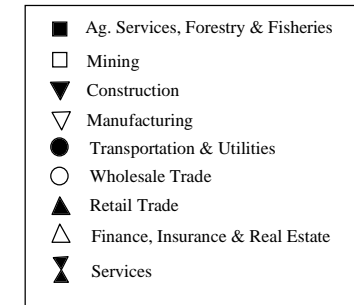
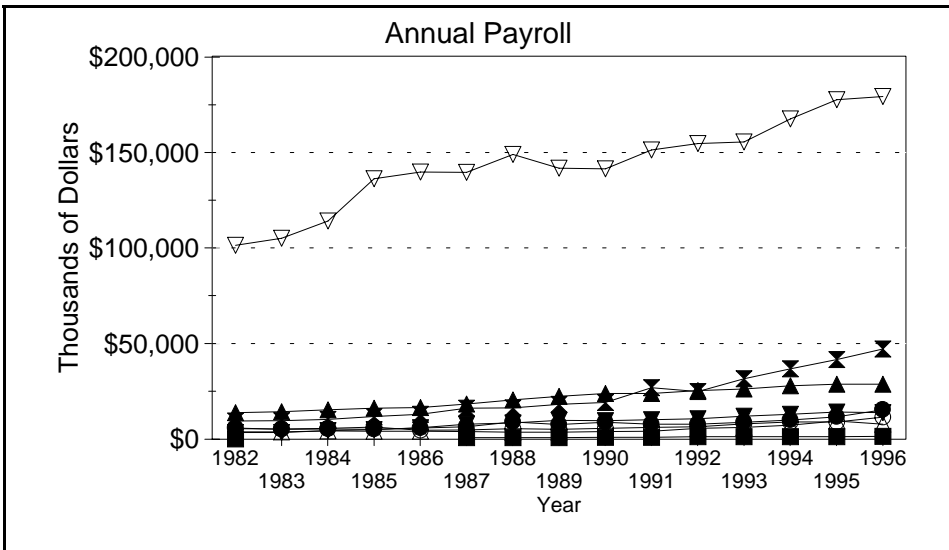
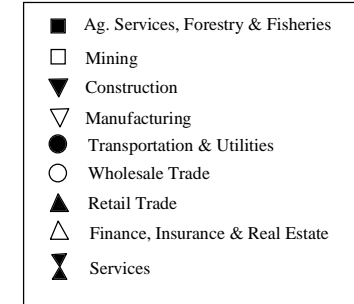
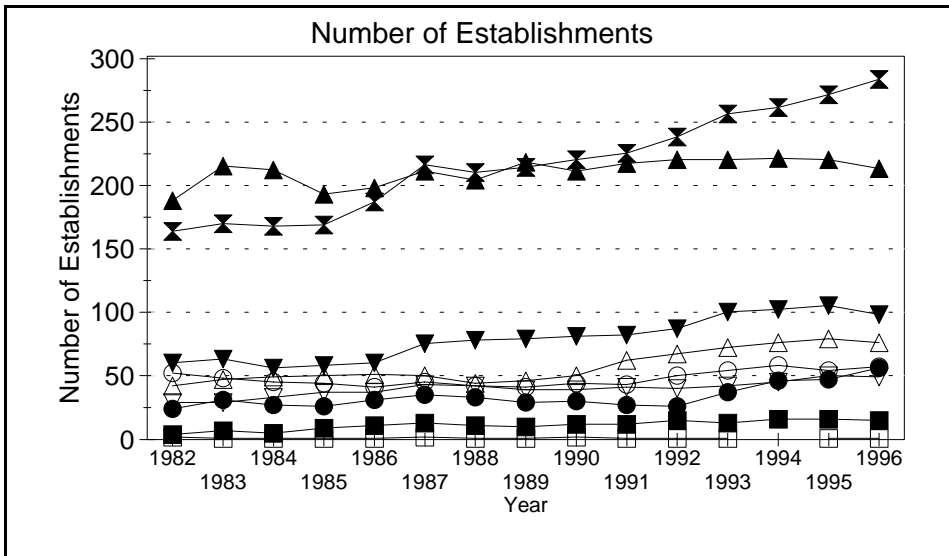
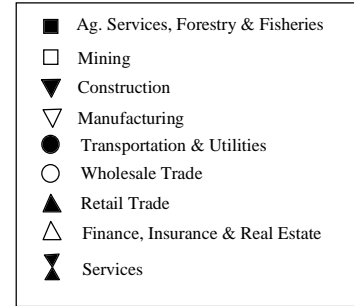
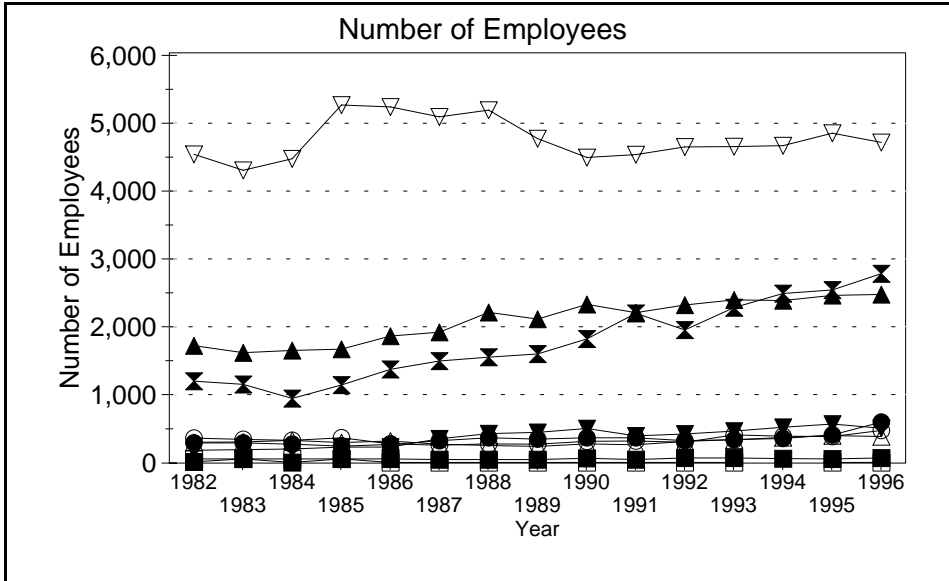


Business Statistics



Source: County Business Patterns, Ohio. These data are derived from all wage and salary employment covered by FICA which includes private non-farm employers and non-profit organizations, but does not include farms and the self employed.

Business Statistics

Number of Employees

Year	Ag. Services, Forestry, Fisheries*	Mining	Construction	Manufacturing	Transportation & Utilities	Wholesale Trade	Retail Trade	Finance, Insurance, Real Estate	Services	Not Classifiable	Total
1982	17	B	188	4,516	297	363	1,717	302	1,199	B	8,658
1983	B	B	195	4,281	296	347	1,617	307	1,150	21	8,255
1984	A	B	206	4,449	278	333	1,646	330	944	57	8,278
1985	B	B	232	5,239	249	371	1,667	300	1,140	85	9,336
1986	B	A	234	5,208	271	282	1,859	325	1,370	89	9,690
1987	50	A	358	5,063	328	264	1,913	276	1,495	A	9,773
1988	50	A	429	5,163	372	282	2,204	257	1,547	B	10,352
1989	52	A	451	4,745	349	274	2,106	242	1,598	B	9,871
1990	68	A	506	4,471	372	318	2,320	280	1,814	A	10,182
1991	53	A	398	4,513	368	323	2,200	265	2,192	B	10,350
1992	73	A	424	4,626	326	303	2,314	320	1,946	A	10,345
1993	74	A	469	4,627	340	414	2,389	342	2,276	A	10,955
1994	64		525	4,645	360	393	2,377	375	2,482	16	11,237
1995	63	A	570	4,823	410	390	2,454	402	2,533	B	11,678
1996	74	A	511	4,689	601	476	2,468	389	2,773	A	11,983

Number of Establishments

Year	Ag. Services, Forestry, Fisheries*	Mining	Construction	Manufacturing	Transportation & Utilities	Wholesale Trade	Retail Trade	Finance, Insurance, Real Estate	Services	Not Classifiable	Total
1982	4	2	60	29	24	52	187	42	163	12	575
1983	7	1	63	29	31	48	214	47	169	22	631
1984	5	1	56	33	27	45	211	49	167	47	641
1985	9	1	58	37	26	44	192	50	168	61	646
1986	11	1	60	37	31	41	197	51	186	45	660
1987	13	2	75	43	35	45	210	50	215	13	701
1988	11	1	78	42	33	42	203	44	209	49	712
1989	10	1	79	39	29	41	217	46	213	43	718
1990	12	2	81	39	30	44	210	50	219	21	708
1991	12	1	82	41	27	43	216	62	224	20	728
1992	15	1	87	40	26	50	219	67	237	12	754
1993	13	1	100	42	37	54	219	72	255	13	806
1994	16		102	45	46	58	220	76	260	14	837
1995	16	1	105	50	47	54	219	79	270	18	859
1996	15	1	98	49	56	57	212	76	282	6	852

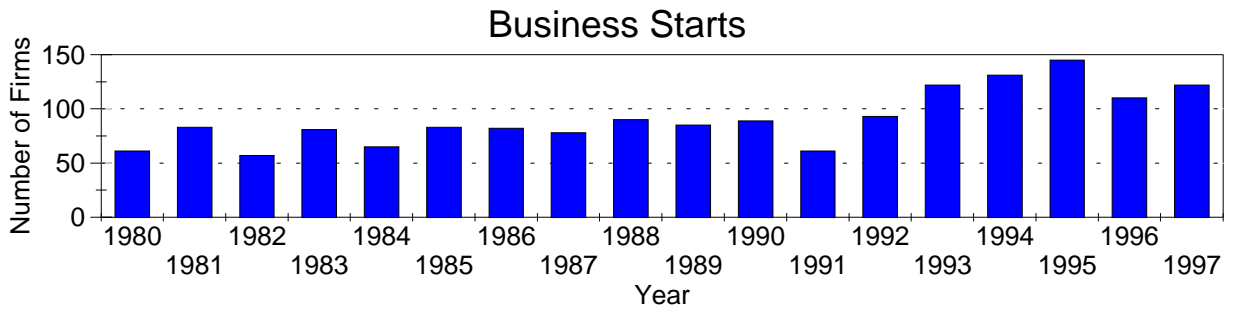
Annual Payroll (Thousands of Dollars)

Year	Ag. Services, Forestry, Fisheries*	Mining	Construction	Manufacturing	Transportation & Utilities	Wholesale Trade	Retail Trade	Finance, Insurance, Real Estate	Services	Not Classifiable	Total
1982	130	D	3,530	101,244	5,783	5,440	13,904	3,885	9,569	D	144,116
1983	D	D	3,519	104,968	5,182	5,388	14,360	3,922	9,676	140	147,642
1984	D	D	4,543	113,981	5,299	5,665	15,290	4,310	10,288	530	160,434
1985	D	D	5,057	135,974	5,212	6,339	16,175	4,237	11,780	611	186,199
1986	D	D	6,083	139,511	5,851	4,760	16,587	4,131	13,052	891	191,857
1987	771	D	7,866	139,390	6,542	4,765	18,385	4,011	16,132	D	198,439
1988	785	D	8,536	148,781	9,007	5,440	20,560	3,651	16,385	D	213,937
1989	832	D	9,844	141,490	7,644	5,255	22,329	3,713	18,193	D	210,119
1990	1,006	D	9,769	141,178	8,839	5,611	23,938	4,092	19,252	D	214,270
1991	999	D	10,110	151,005	7,874	6,171	23,946	4,249	26,860	D	231,794
1992	1,354	D	10,705	154,440	7,922	6,524	25,344	5,616	24,959	D	237,227
1993	1,336	D	12,070	155,244	8,772	8,058	26,216	6,220	31,660	D	250,022
1994	1,371		13,084	167,208	10,087	8,943	27,869	7,396	36,711	221	272,890
1995	1,340	D	14,222	177,288	11,746	9,086	28,729	9,499	41,651	D	293,803
1996	1,453	D	13,951	178,979	15,298	11,611	28,744	7,917	47,112	D	305,129

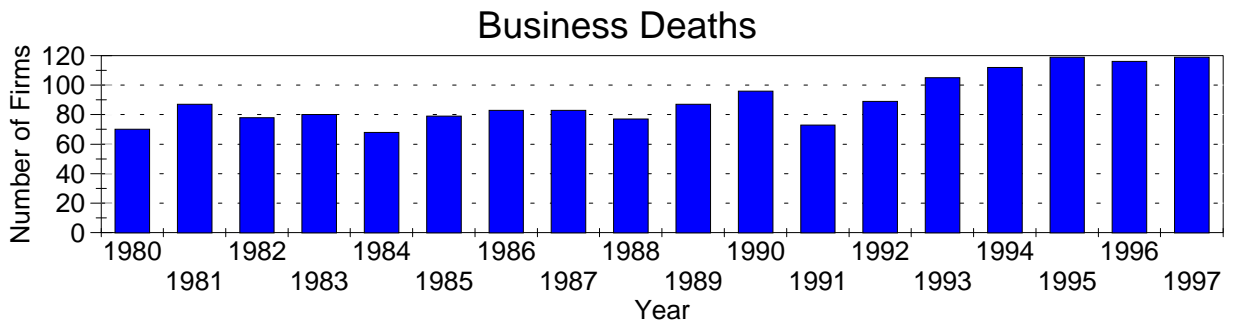
A=0-19, B=20-99, C=100-249, D=figures withheld, E=250-499,  
 F=500-999, G=1,000-2,499, H=2,500-4,999, I=5,000-9,999,  
 J=10,000-24,999, K=25,000-49,999, L=50,000-99,999, M=100,000 or more

\*Ag. Services, Forestry & Fisheries include only non-farm businesses.

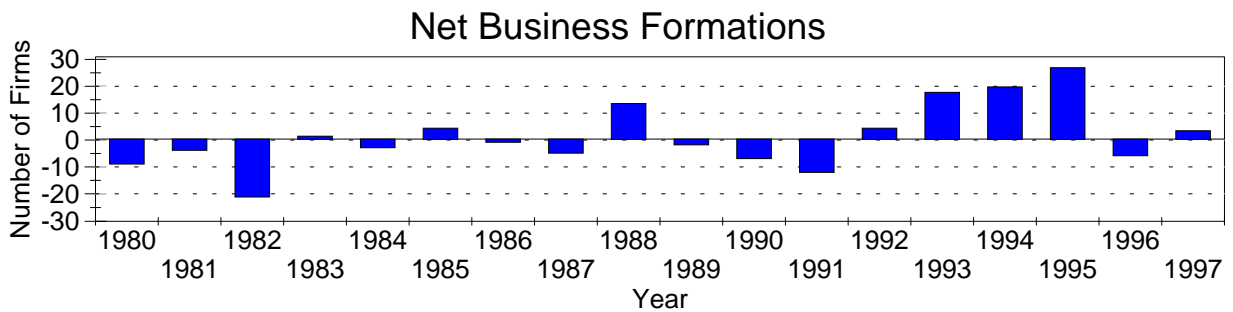
Business Statistics



Business starts and business deaths are determined from workers compensation records.



Business starts less business deaths equal net business formations.



Business Starts

Year	Number of Firms
1980	61
1981	83
1982	57
1983	81
1984	65
1985	83
1986	82
1987	78
1988	90
1989	85
1990	89
1991	61
1992	93
1993	122
1994	131
1995	145
1996	110
1997	122

Business Deaths

Year	Number of Firms
1980	70
1981	87
1982	78
1983	80
1984	68
1985	79
1986	83
1987	83
1988	77
1989	87
1990	96
1991	73
1992	89
1993	105
1994	112
1995	119
1996	116
1997	119

Net Business Formations

Year	Number of Firms
1980	-9
1981	-4
1982	-21
1983	1
1984	-3
1985	4
1986	-1
1987	-5
1988	13
1989	-2
1990	-7
1991	-12
1992	4
1993	17
1994	19
1995	26
1996	-6
1997	3

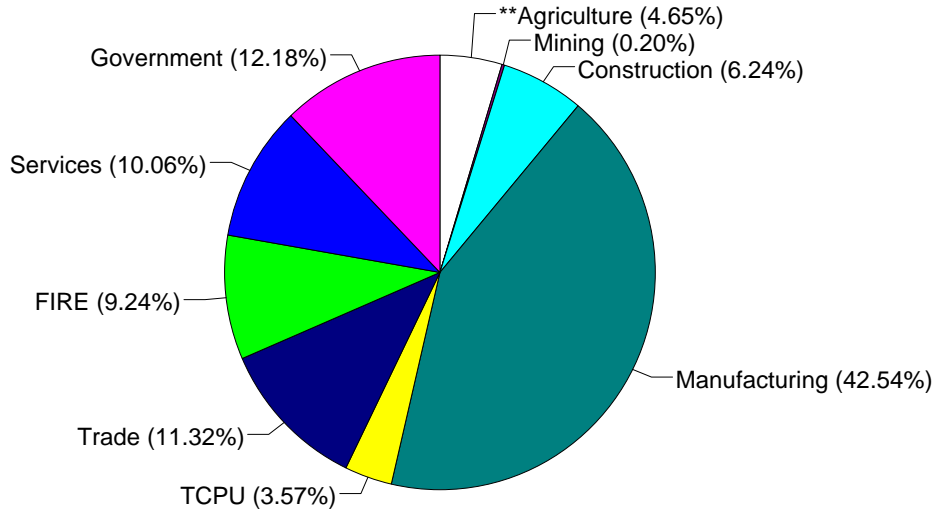
Source: Components of Business Change, Ohio Department of Development, Office of Strategic Research

Economic Structure

Total Value Added:  
\$793.89 million.

Value Added by Sector (1993)\*

Value Added is a broad measure of income that includes employee compensations, business profits, and returns to property, plant, and equipment.



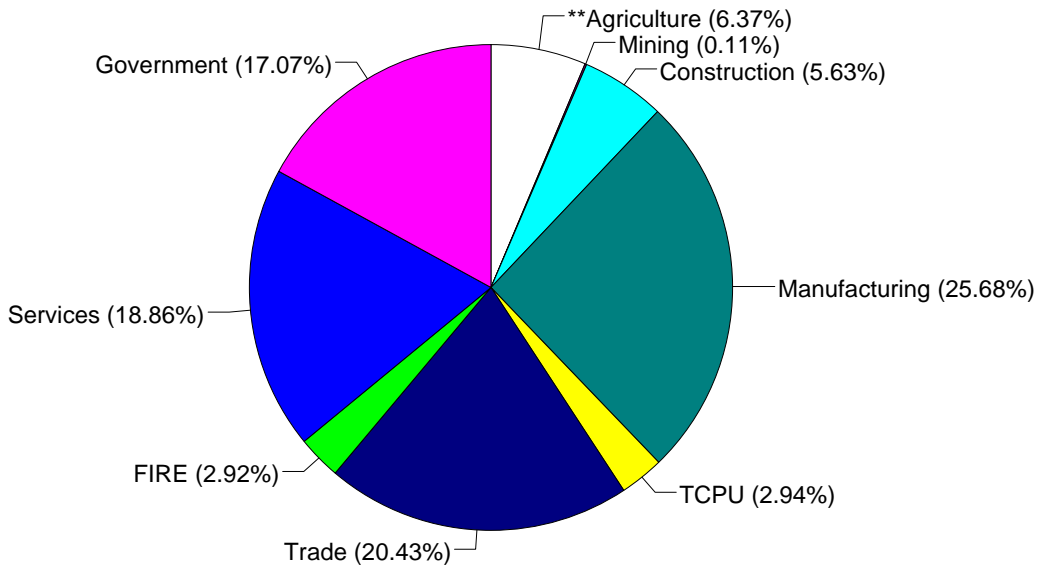
TCPU=Transportation, Communication, and Public Utilities.  
FIRE=Finance, Insurance, and Real Estate.

\*These estimates include many components not reported in other sources such as farms, self-employed, and small firms.

\*\*Agriculture/Fishing/Forestry sector includes production agriculture (farm), agricultural services, forestry, and fishing enterprises.

Total Employment:  
18,991 workers.

1993 Employment by Sector\*



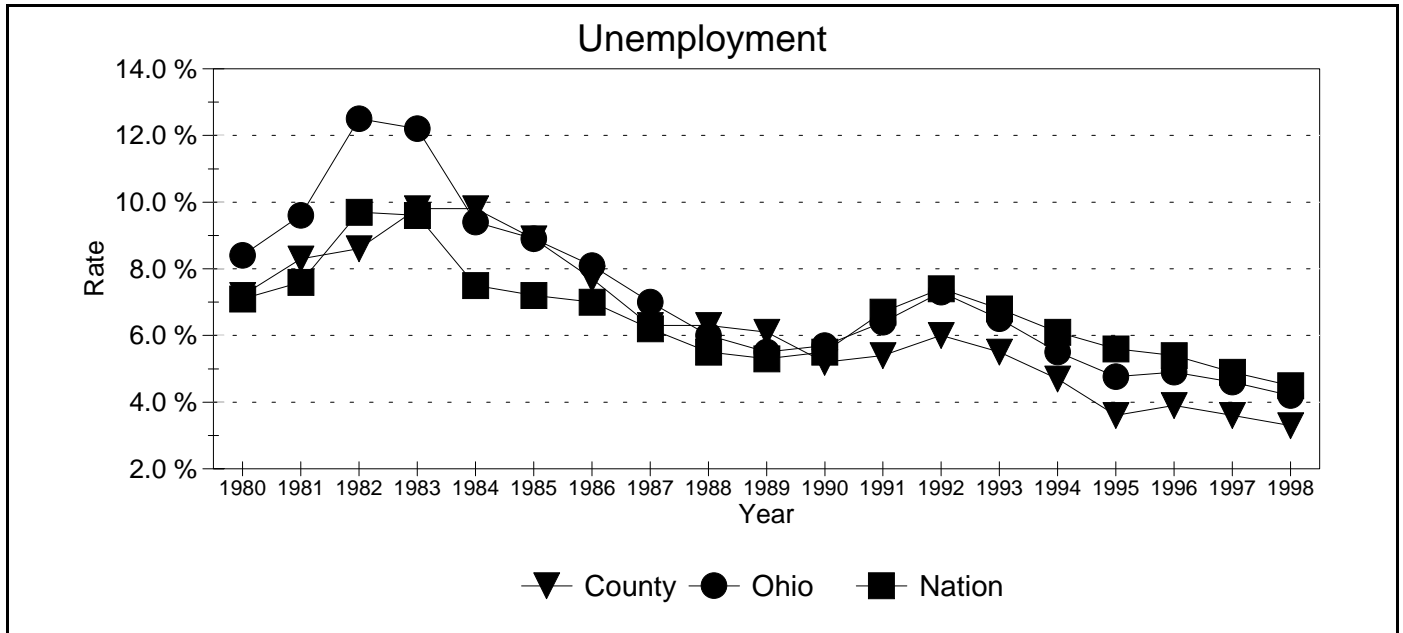
TCPU=Transportation, Communication, and Public Utilities.  
FIRE=Finance, Insurance, and Real Estate.

\*These estimates include many components not reported in other sources such as farms, self-employed, and small firms.

\*\*Agriculture/Fishing/Forestry sector includes production agriculture (farm), agricultural services, forestry, and fishing enterprises.

Source: 1993 IMPLAN database, Minnesota Implan Group. IMPLAN is a non-survey regional input-output account generator originally developed by the U.S. Forest Service. These estimates provide a full picture of the county's economy.

Unemployment Statistics



Source: Bureau of Labor Statistics

Commuting Statistics

Residents retained in Pickaway County: 9,751.

Residents of Neighboring Counties Working in Pickaway County, 1990

County of Residence	Number of Incommuters
Ross	1,941
Franklin	1,103
Fairfield	849
Hocking	495
Fayette	209
Madison	172
Pike	92

Residents of Pickaway County Working in Neighboring Counties, 1990

County of Work	Number of Outcommuters
Franklin	7,876
Ross	590
Madison	328
Fairfield	270
Fayette	173
Hocking	85
Licking	60

Source: U.S. Census Bureau, 1990 Census Summary Tape File S-5.