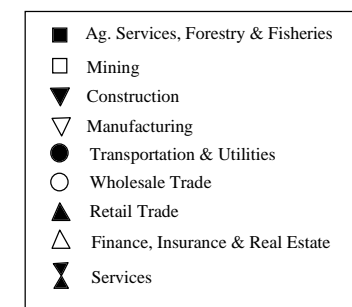
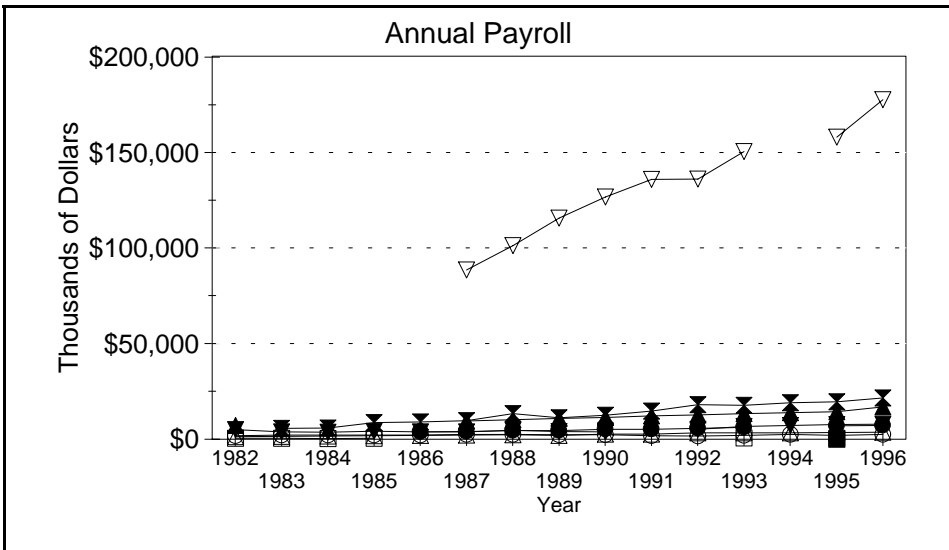
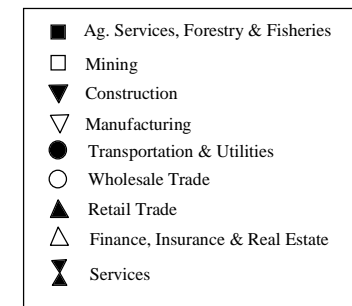
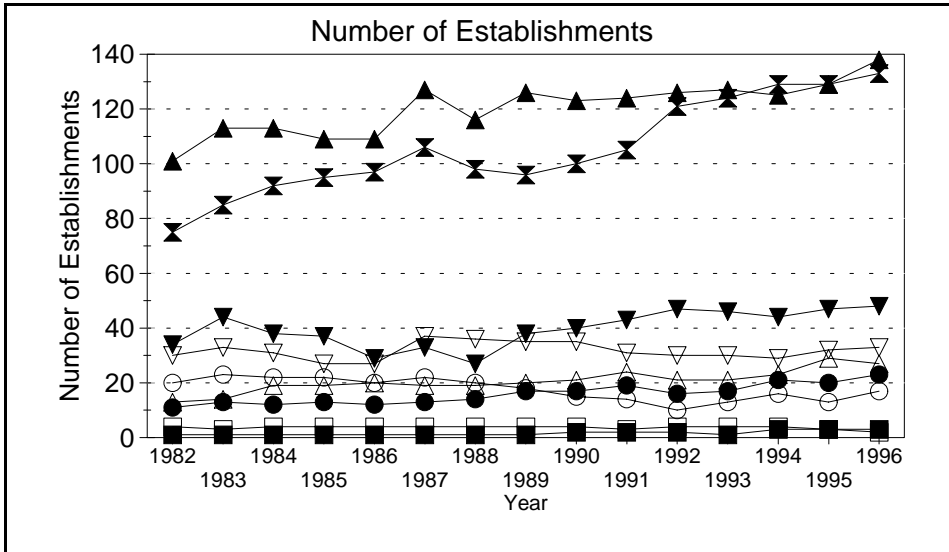
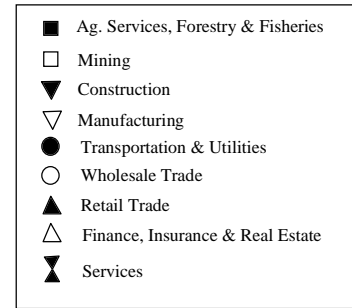
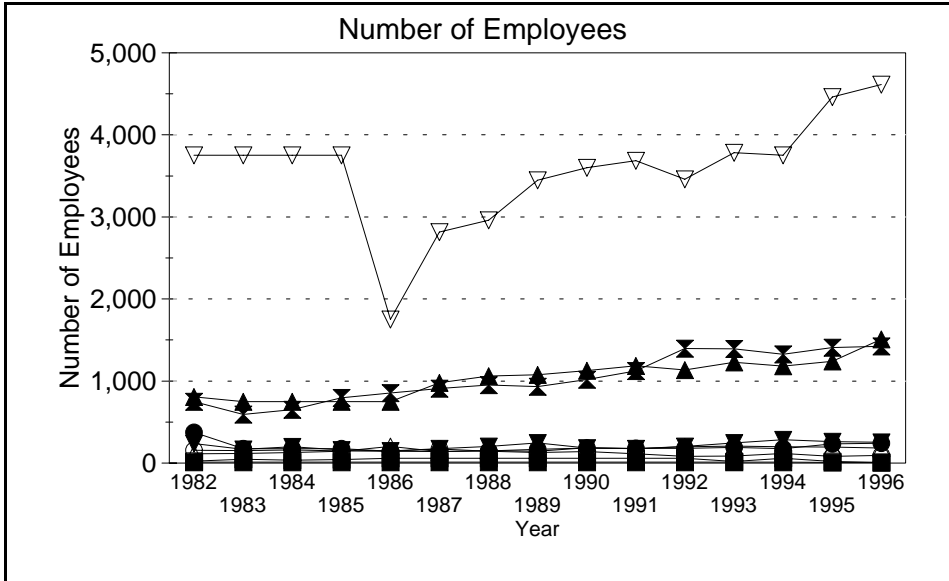


Business Statistics



Source: County Business Patterns, Ohio. These data are derived from all wage and salary employment covered by FICA which includes private non-farm employers and non-profit organizations, but does not include farms and the self employed.

Business Statistics

Number of Employees

Year	Ag. Services, Forestry, Fisheries*	Mining	Construction	Manufacturing	Transportation & Utilities	Wholesale Trade	Retail Trade	Finance, Insurance, Real Estate	Services	Not Classifiable	Total
1982	A	25	236	H	E	156	809	114	F	3	6,016
1983	A	48	167	H	C	153	F	117	593	26	5,585
1984	A	37	197	H	C	160	F	129	651	29	5,942
1985	A	44	159	H	C	147	F	146	797	39	6,281
1986	A	B	147	G	146	146	F	202	855	58	4,869
1987	A	B	174	2,817	139	172	979	139	907	9	5,364
1988	A	B	203	2,961	148	145	1,060	153	951	66	5,713
1989	A	B	247	3,446	169	128	1,078	144	934	57	6,233
1990	A	B	183	3,601	182	140	1,129	187	1,018	49	6,532
1991	A	B	C	3,684	178	112	1,184	176	1,125	A	6,733
1992	A	B	202	3,460	180	83	1,136	197	1,397	1	6,693
1993	A	19	246	3,782	193	86	1,227	206	1,394	B	7,182
1994	A	B	284	H	C	116	1,181	199	1,327	A	6,181
1995	9	20	263	4,462	235	82	1,242	195	1,409	8	7,925
1996	A	A	252	4,613	243	93	1,508	183	1,422		8,338

Number of Establishments

Year	Ag. Services, Forestry, Fisheries*	Mining	Construction	Manufacturing	Transportation & Utilities	Wholesale Trade	Retail Trade	Finance, Insurance, Real Estate	Services	Not Classifiable	Total
1982	1	4	34	30	11	20	101	13	75	8	297
1983	1	3	44	33	13	23	113	14	85	16	345
1984	1	4	38	31	12	22	113	19	92	33	365
1985	1	4	37	27	13	22	109	19	95	32	359
1986	1	4	29	27	12	20	109	20	97	29	348
1987	1	4	33	37	13	22	127	19	106	10	372
1988	1	4	27	36	14	20	116	19	98	35	370
1989	1	4	38	35	17	18	126	20	96	28	383
1990	2	4	40	35	17	15	123	21	100	20	377
1991	2	3	43	31	19	14	124	24	105	7	372
1992	2	4	47	30	16	10	126	21	121	5	382
1993	1	4	46	30	17	13	127	21	124	7	390
1994	3	4	44	29	21	16	125	23	129	6	400
1995	3	3	47	32	20	13	129	29	129	5	410
1996	3	2	48	33	23	17	138	27	133		424

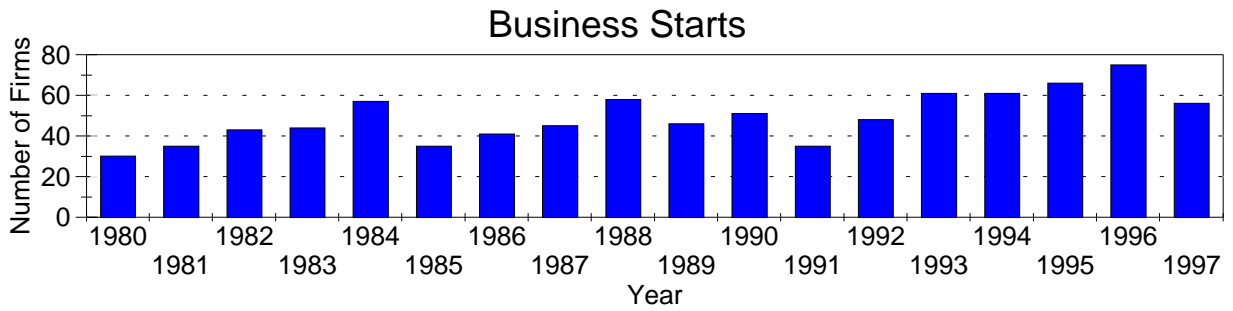
Annual Payroll (Thousands of Dollars)

Year	Ag. Services, Forestry, Fisheries*	Mining	Construction	Manufacturing	Transportation & Utilities	Wholesale Trade	Retail Trade	Finance, Insurance, Real Estate	Services	Not Classifiable	Total
1982	D	496	4,948	D	D	1,909	7,246	1,410	D	76	116,652
1983	D	425	3,815	D	D	2,198	D	1,514	5,651	311	118,940
1984	D	394	3,667	D	D	2,151	D	1,622	5,918	1,513	128,843
1985	D	474	4,150	D	D	2,126	D	1,826	8,753	375	138,511
1986	D	D	3,835	D	3,866	2,134	D	1,949	8,941	506	104,528
1987	D	D	3,784	88,342	4,081	2,423	9,547	2,103	9,621	97	120,513
1988	D	D	4,599	101,106	4,545	2,456	10,203	2,298	13,289	844	139,957
1989	D	D	3,957	115,379	4,587	2,303	10,786	2,065	11,163	516	151,415
1990	D	D	3,905	126,448	5,184	2,422	11,365	2,625	12,499	312	165,463
1991	D	D	D	135,737	5,241	1,892	12,237	2,756	14,667	D	177,878
1992	D	D	5,168	135,857	5,654	1,618	12,773	3,275	17,962	67	183,018
1993	D	603	6,661	150,283	6,210	2,045	13,320	3,304	17,668	D	200,275
1994	D	D	7,193	D	D	2,543	13,805	3,360	19,085	D	183,828
1995	70	547	7,610	157,778	7,041	1,950	14,292	3,562	19,594	105	212,549
1996	D	D	7,921	177,247	7,266	2,502	16,889	3,724	21,519		237,701

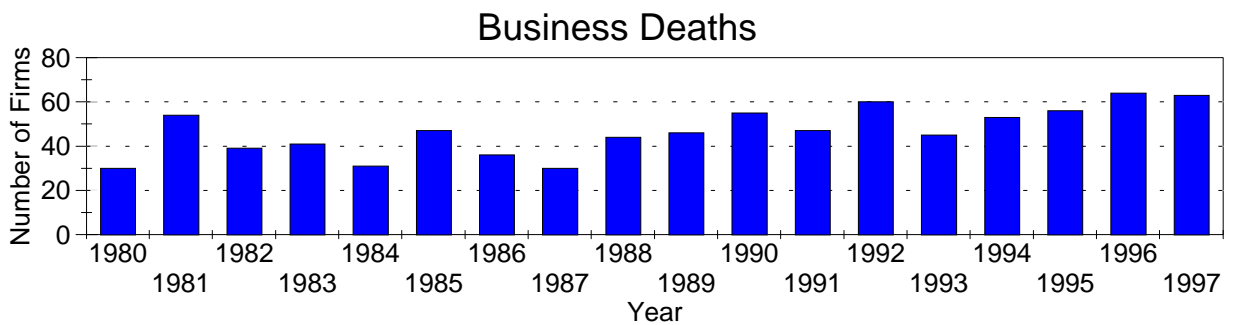
A=0-19, B=20-99, C=100-249, D=figures withheld, E=250-499,
 F=500-999, G=1,000-2,499, H=2,500-4,999, I=5,000-9,999,
 J=10,000-24,999, K=25,000-49,999, L=50,000-99,999, M=100,000 or more

*Ag. Services, Forestry & Fisheries include only non-farm businesses.

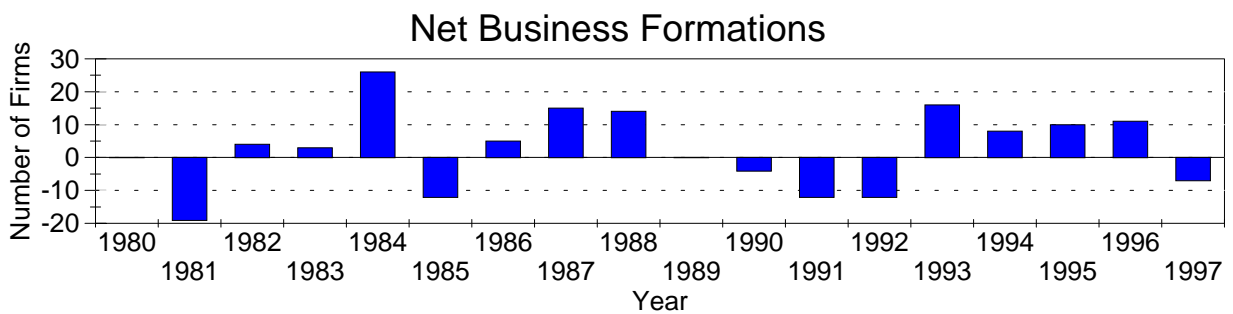
Business Statistics



Business starts and business deaths are determined from workers compensation records.



Business starts less business deaths equal net business formations.



Business Starts

Year	Number of Firms
1980	30
1981	35
1982	43
1983	44
1984	57
1985	35
1986	41
1987	45
1988	58
1989	46
1990	51
1991	35
1992	48
1993	61
1994	61
1995	66
1996	75
1997	56

Business Deaths

Year	Number of Firms
1980	30
1981	54
1982	39
1983	41
1984	31
1985	47
1986	36
1987	30
1988	44
1989	46
1990	55
1991	47
1992	60
1993	45
1994	53
1995	56
1996	64
1997	63

Net Business Formations

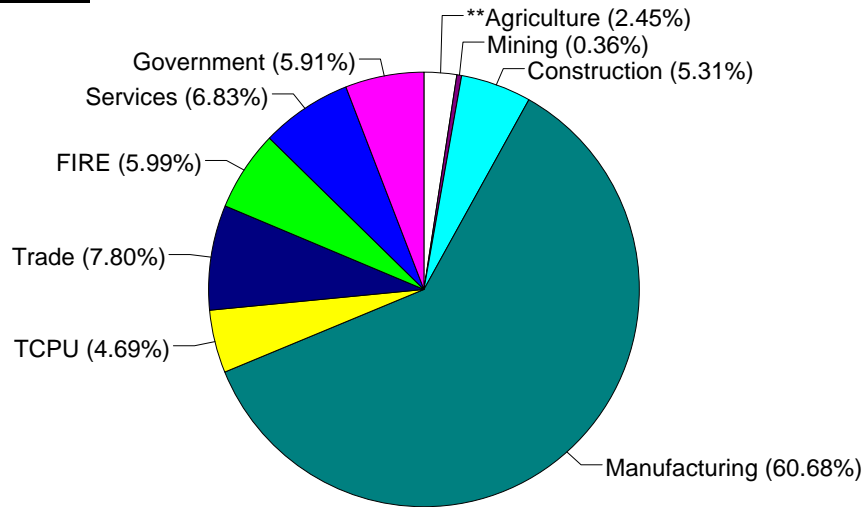
Year	Number of Firms
1980	0
1981	-19
1982	4
1983	3
1984	26
1985	-12
1986	5
1987	15
1988	14
1989	0
1990	-4
1991	-12
1992	-12
1993	16
1994	8
1995	10
1996	11
1997	-7

Source: Components of Business Change, Ohio Department of Development, Office of Strategic Research

Economic Structure

Total Value Added:
\$548.87 million.

Value Added by Sector (1993)*



Value Added is a broad measure of income that includes employee compensations, business profits, and returns to property, plant, and equipment.

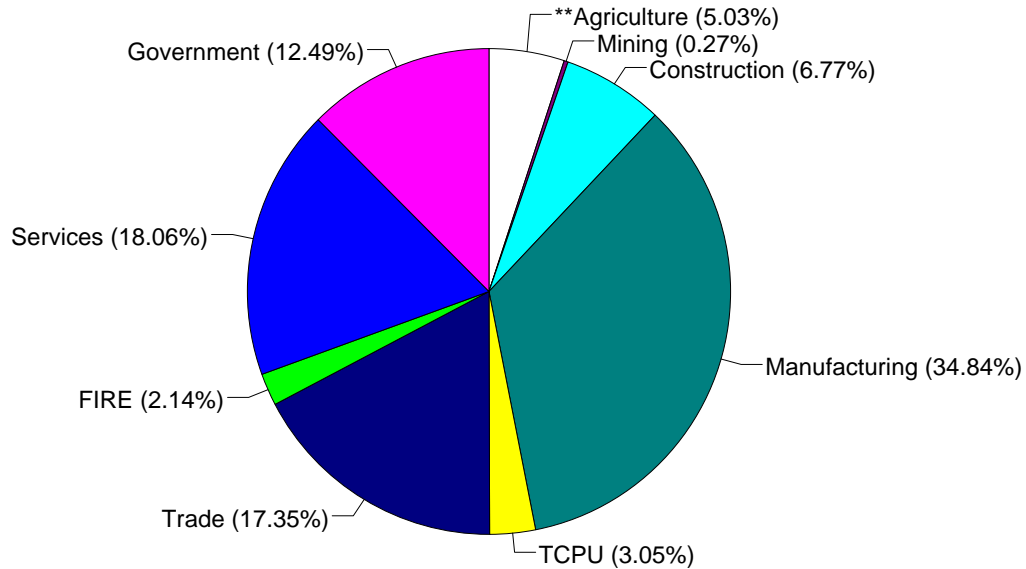
TCPU=Transportation, Communication, and Public Utilities.
FIRE=Finance, Insurance, and Real Estate.

*These estimates include many components not reported in other sources such as farms, self-employed, and small firms.

**Agriculture/Fishing/Forestry sector includes production agriculture (farm), agricultural services, forestry, and fishing enterprises.

Total Employment:
10,880 workers.

1993 Employment by Sector*



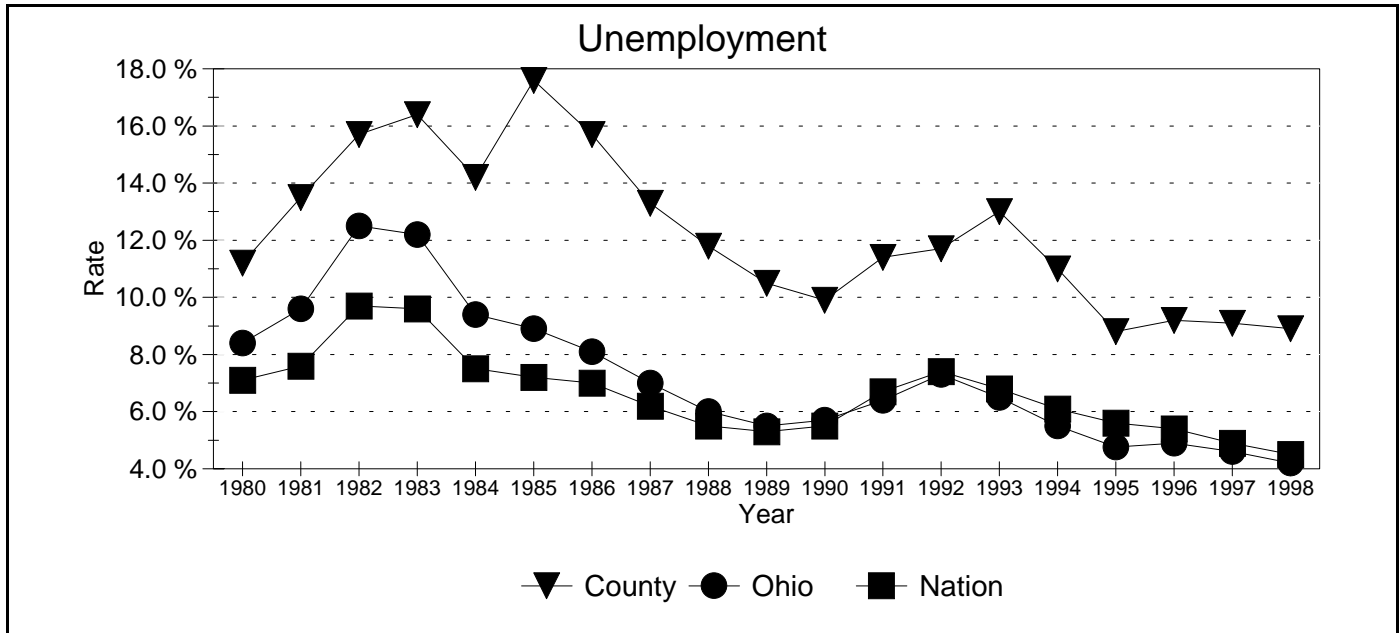
TCPU=Transportation, Communication, and Public Utilities.
FIRE=Finance, Insurance, and Real Estate.

*These estimates include many components not reported in other sources such as farms, self-employed, and small firms.

**Agriculture/Fishing/Forestry sector includes production agriculture (farm), agricultural services, forestry, and fishing enterprises.

Source: 1993 IMPLAN database, Minnesota Implan Group. IMPLAN is a non-survey regional input-output account generator originally developed by the U.S. Forest Service. These estimates provide a full picture of the county's economy.

Unemployment Statistics



Source: Bureau of Labor Statistics

Commuting Statistics

Residents retained in Pike County:
5,106.

Residents of Neighboring Counties Working in Pike County, 1990

County of Residence	Number of Incommuters
Scioto	1,534
Ross	827
Jackson	433
Adams	77
Pickaway	55
Greenup (KY)	39
Franklin	34

Residents of Pike County Working in Neighboring Counties, 1990

County of Work	Number of Outcommuters
Ross	1,263
Scioto	389
Franklin	350
Jackson	127
Adams	111
Highland	104
Pickaway	92

Source: U.S. Census Bureau, 1990 Census Summary Tape File S-5.