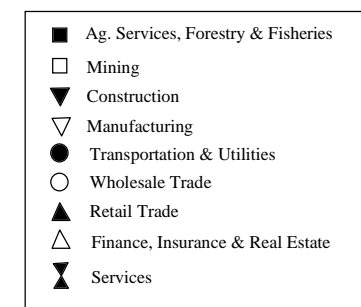
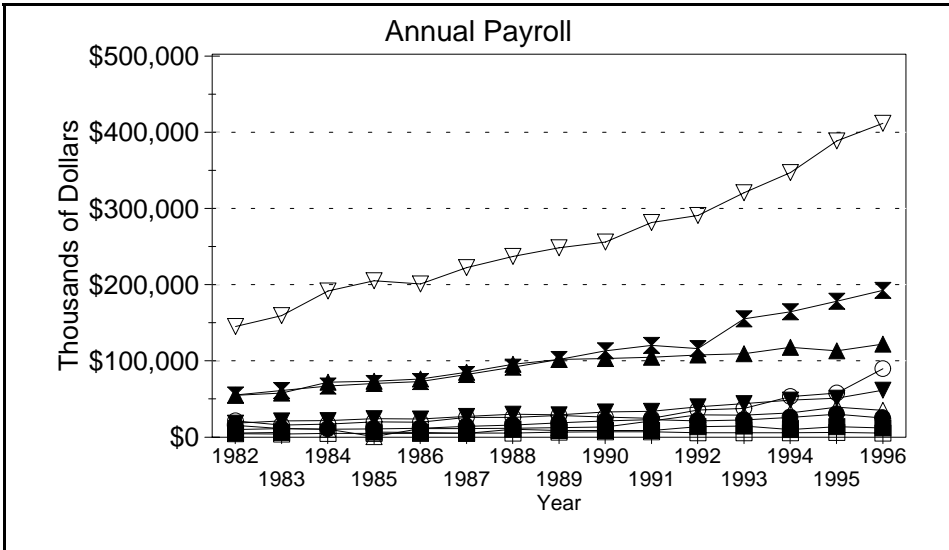
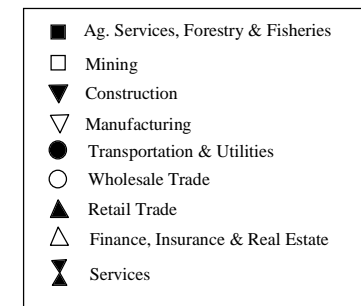
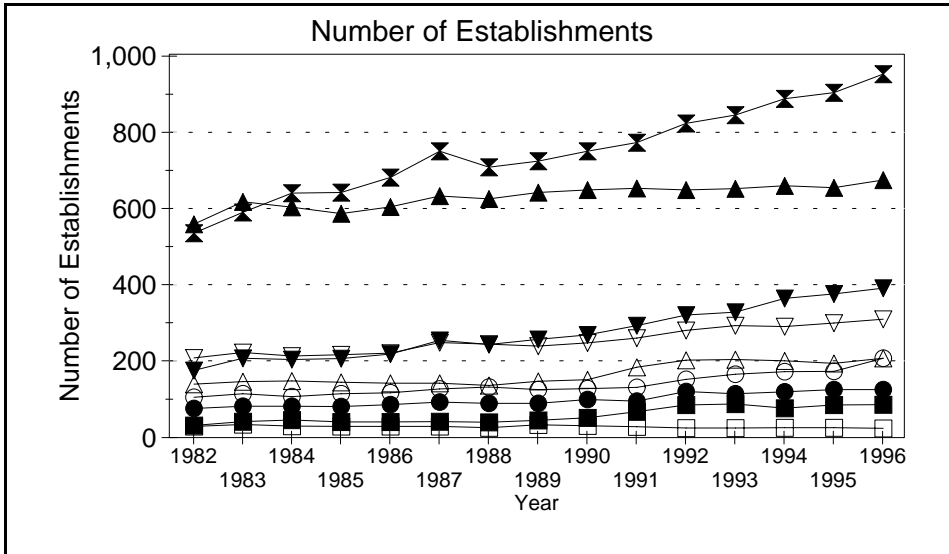
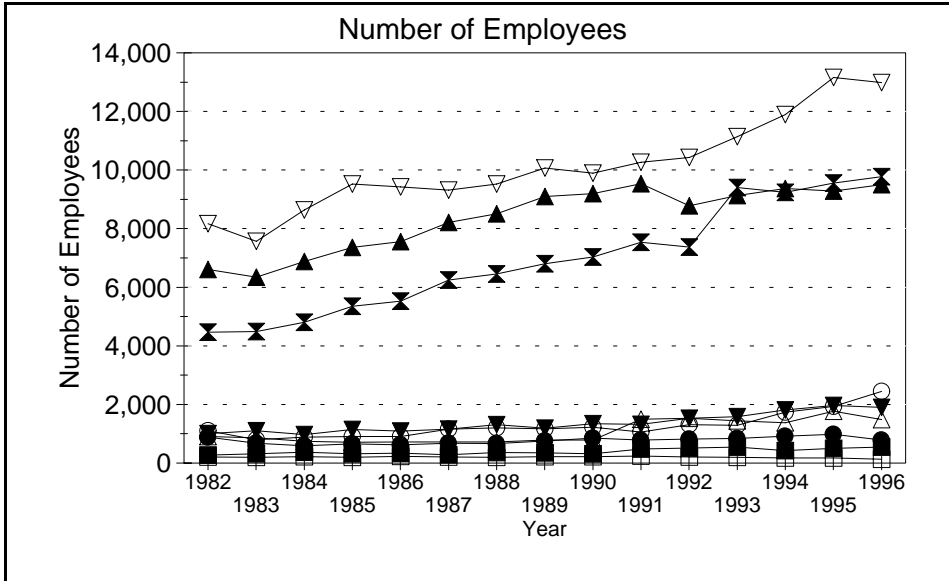


Business Statistics



Source: County Business Patterns, Ohio. These data are derived from all wage and salary employment covered by FICA which includes private non-farm employers and non-profit organizations, but does not include farms and the self employed.

Business Statistics

Number of Employees

Year	Ag. Services, Forestry, Fisheries*	Mining	Construction	Manufacturing	Transportation & Utilities	Wholesale Trade	Retail Trade	Finance, Insurance, Real Estate	Services	Not Classifiable	Total
1982	277	212	1,002	8,167	880	1,100	6,607	904	4,464	32	23,645
1983	320	194	1,107	7,567	676	792	6,345	863	4,491	104	22,459
1984	E	215	975	8,635	593	882	6,885	744	4,800	E	24,350
1985	321	198	1,142	9,519	650	903	7,361	712	5,350	385	26,541
1986	341	231	1,089	9,428	621	911	7,556	725	5,525	291	26,718
1987	279	207	1,161	9,320	681	1,161	8,208	723	6,244	97	28,081
1988	364	195	1,305	9,526	665	1,197	8,509	716	6,453	189	29,119
1989	344	214	1,191	10,074	750	1,168	9,096	782	6,801	235	30,655
1990	315	220	1,344	9,896	855	1,218	9,192	784	7,028	127	30,979
1991	480	240	1,320	10,262	791	1,054	9,538	1,496	7,537	70	32,788
1992	517	206	1,534	10,427	821	1,306	8,777	1,526	7,374	6	32,494
1993	549	193	1,584	11,134	838	1,289	9,129	1,441	9,399	24	35,580
1994	431	177	1,810	11,887	920	1,737	9,371	1,381	9,235	47	36,996
1995	503	177	1,964	13,164	981	1,936	9,281	1,766	9,555	48	39,375
1996	542	130	1,902	12,987	790	2,448	9,498	1,481	9,771	15	39,564

Number of Establishments

Year	Ag. Services, Forestry, Fisheries*	Mining	Construction	Manufacturing	Transportation & Utilities	Wholesale Trade	Retail Trade	Finance, Insurance, Real Estate	Services	Not Classifiable	Total
1982	32	29	175	208	76	105	557	139	533	29	1,883
1983	42	34	207	222	82	114	615	146	588	91	2,141
1984	46	30	204	213	82	107	601	148	638	157	2,226
1985	41	29	206	216	81	114	584	144	639	199	2,253
1986	41	29	218	220	86	117	602	142	679	184	2,318
1987	42	29	254	248	93	127	630	142	747	62	2,374
1988	40	26	243	244	89	132	623	136	705	144	2,382
1989	45	33	256	239	89	125	639	147	721	139	2,433
1990	52	31	268	247	99	128	646	151	747	92	2,461
1991	68	28	292	260	95	131	650	184	770	43	2,521
1992	85	25	320	280	120	152	646	202	820	33	2,683
1993	88	25	327	292	114	165	649	204	841	33	2,738
1994	77	26	363	290	119	172	657	200	884	35	2,823
1995	85	26	375	299	125	173	652	194	900	31	2,860
1996	86	24	390	309	125	207	672	207	948	16	2,984

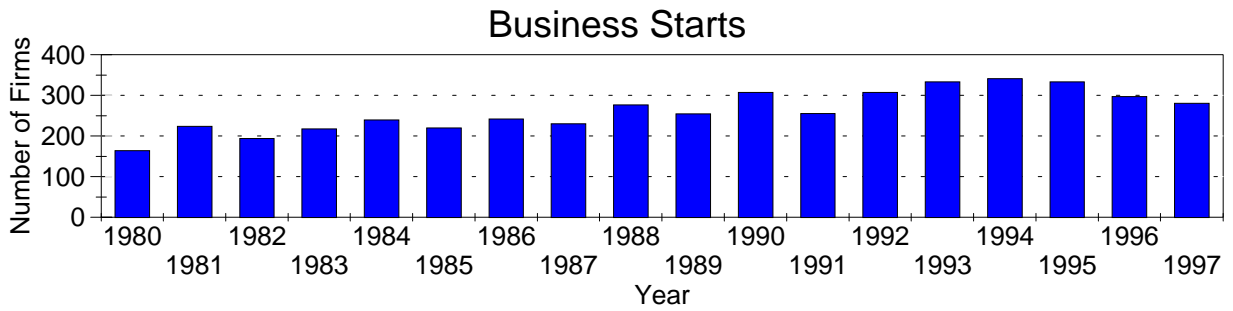
Annual Payroll (Thousands of Dollars)

Year	Ag. Services, Forestry, Fisheries*	Mining	Construction	Manufacturing	Transportation & Utilities	Wholesale Trade	Retail Trade	Finance, Insurance, Real Estate	Services	Not Classifiable	Total
1982	5,356	4,635	18,511	144,466	15,601	21,384	54,744	10,220	55,288	422	330,627
1983	6,375	4,278	21,385	158,848	11,452	15,679	57,818	11,107	60,810	1,866	349,619
1984	D	4,950	21,549	190,782	10,517	16,952	71,818	10,410	66,758	D	403,987
1985	6,579	4,953	24,256	204,206	11,068	20,059	73,186	1,040	70,004	4,307	429,028
1986	6,147	5,106	23,831	200,104	11,510	19,735	76,038	11,355	72,772	3,582	430,182
1987	4,978	5,629	27,290	221,491	14,367	26,100	84,870	11,075	82,075	1,130	479,005
1988	10,303	5,576	29,980	236,072	16,009	25,895	95,353	11,671	91,623	3,468	525,950
1989	8,970	6,542	29,426	247,189	18,975	28,257	101,387	12,683	101,447	3,460	558,336
1990	8,673	7,248	32,995	254,941	21,207	26,520	102,785	13,356	112,879	3,056	583,660
1991	8,610	7,217	33,799	280,414	22,916	24,555	104,488	21,354	119,727	962	624,042
1992	13,919	5,656	39,793	289,433	21,118	35,374	107,282	29,189	115,810	1,674	659,248
1993	14,531	5,797	44,025	318,969	22,495	37,716	109,224	28,836	154,498	277	736,368
1994	10,132	5,808	48,605	345,397	25,858	52,887	117,252	31,693	163,854	854	802,340
1995	13,922	6,060	51,155	386,860	30,003	57,689	112,971	39,227	177,620	549	876,056
1996	12,176	5,552	61,592	409,818	25,223	89,346	121,441	34,970	191,767	241	952,126

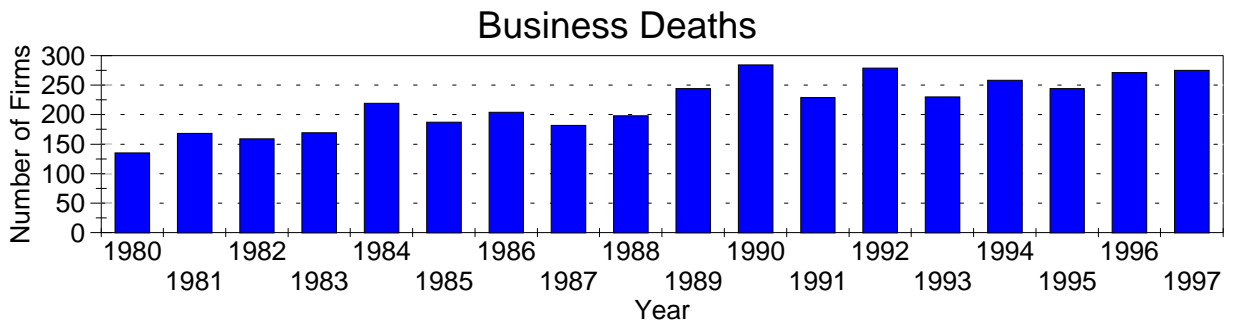
A=0-19, B=20-99, C=100-249, D=figures withheld, E=250-499,
 F=500-999, G=1,000-2,499, H=2,500-4,999, I=5,000-9,999,
 J=10,000-24,999, K=25,000-49,999, L=50,000-99,999, M=100,000 or more

*Ag. Services, Forestry & Fisheries include only non-farm businesses.

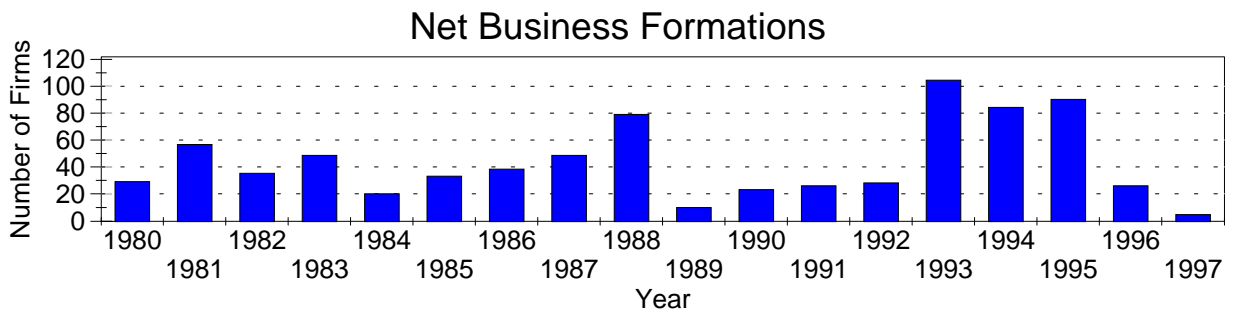
Business Statistics



Business starts and business deaths are determined from workers compensation records.



Business starts less business deaths equal net business formations.



Business Starts

Year	Number of Firms
1980	164
1981	224
1982	194
1983	217
1984	239
1985	220
1986	242
1987	230
1988	276
1989	254
1990	307
1991	255
1992	307
1993	333
1994	341
1995	333
1996	297
1997	280

Business Deaths

Year	Number of Firms
1980	135
1981	168
1982	159
1983	169
1984	219
1985	187
1986	204
1987	182
1988	198
1989	244
1990	284
1991	229
1992	279
1993	230
1994	258
1995	244
1996	271
1997	275

Net Business Formations

Year	Number of Firms
1980	29
1981	56
1982	35
1983	48
1984	20
1985	33
1986	38
1987	48
1988	78
1989	10
1990	23
1991	26
1992	28
1993	103
1994	83
1995	89
1996	26
1997	5

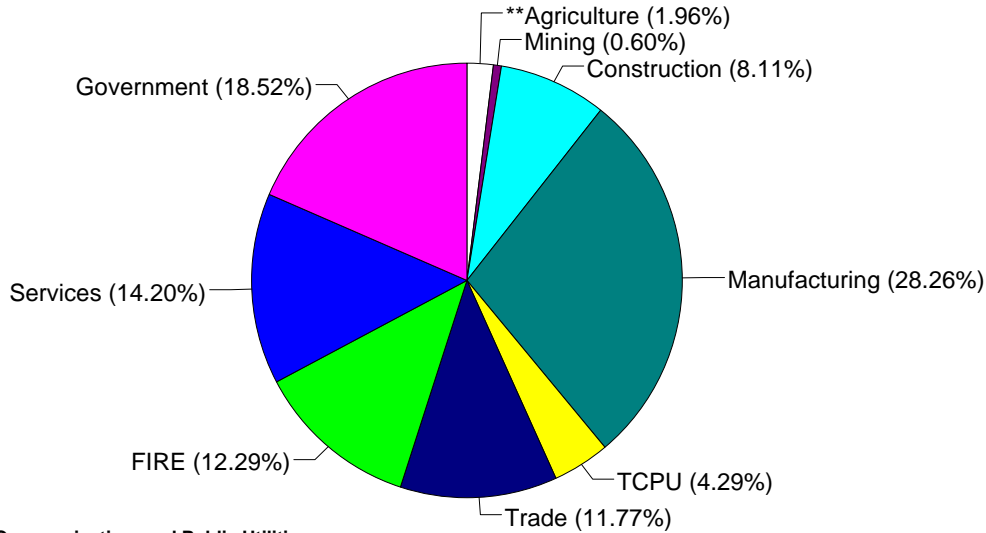
Source: Components of Business Change, Ohio Department of Development, Office of Strategic Research

Economic Structure

Total Value Added:
\$2,175.69 million.

Value Added by Sector (1993)*

Value Added is a broad measure of income that includes employee compensations, business profits, and returns to property, plant, and equipment.



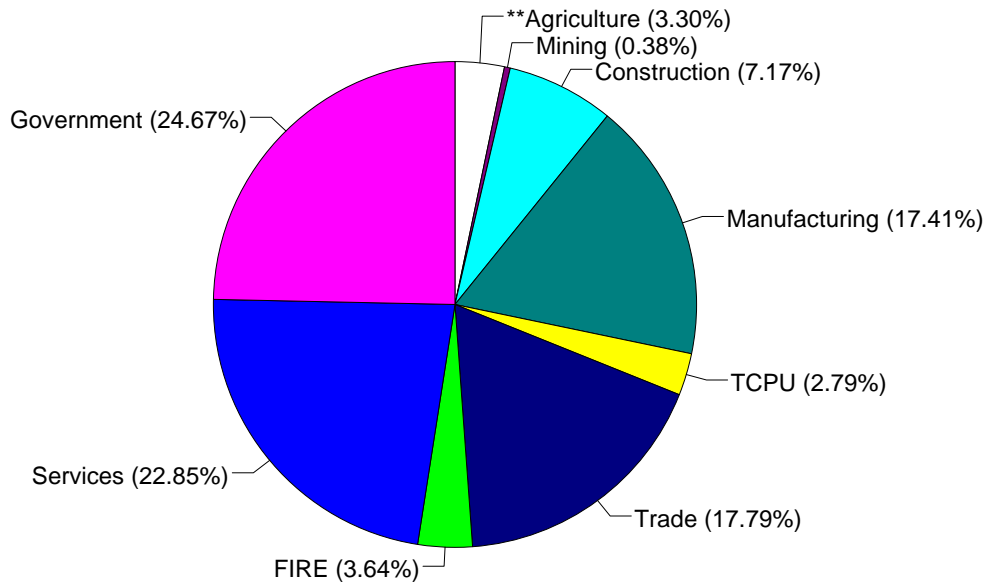
TCPU=Transportation, Communication, and Public Utilities.
FIRE=Finance, Insurance, and Real Estate.

*These estimates include many components not reported in other sources such as farms, self-employed, and small firms.

**Agriculture/Fishing/Forestry sector includes production agriculture (farm), agricultural services, forestry, and fishing enterprises.

Total Employment:
60,476 workers.

1993 Employment by Sector*



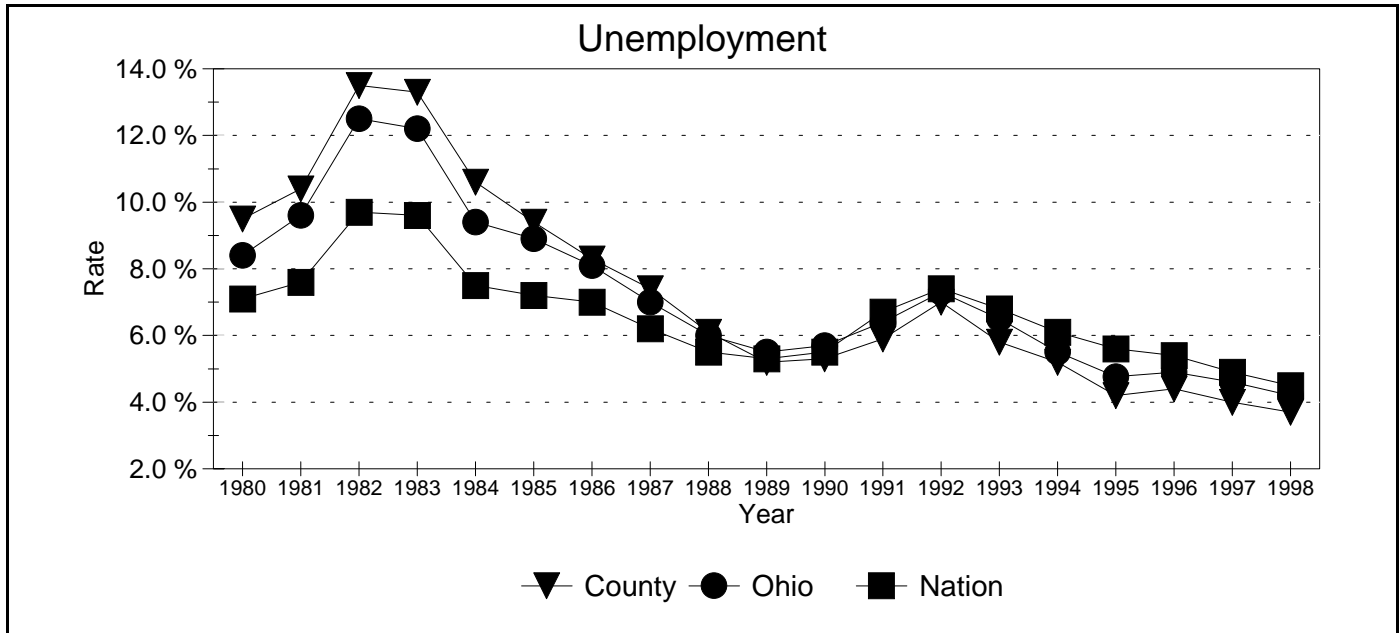
TCPU=Transportation, Communication, and Public Utilities.
FIRE=Finance, Insurance, and Real Estate.

*These estimates include many components not reported in other sources such as farms, self-employed, and small firms.

**Agriculture/Fishing/Forestry sector includes production agriculture (farm), agricultural services, forestry, and fishing enterprises.

Source: 1993 IMPLAN database, Minnesota Implan Group. IMPLAN is a non-survey regional input-output account generator originally developed by the U.S. Forest Service. These estimates provide a full picture of the county's economy.

Unemployment Statistics



Source: Bureau of Labor Statistics

Commuting Statistics

Residents retained in Portage County: 34,848.

Residents of Neighboring Counties Working in Portage County, 1990

County of Residence	Number of Incommuters
Summit	7,714
Trumbull	1,661
Stark	1,381
Cuyahoga	1,374
Mahoning	747
Geauga	615
Medina	189

Residents of Portage County Working in Neighboring Counties, 1990

County of Work	Number of Outcommuters
Summit	15,735
Cuyahoga	10,163
Stark	1,483
Trumbull	1,352
Geauga	1,281
Mahoning	536
Lake	447

Source: U.S. Census Bureau, 1990 Census Summary Tape File S-5.