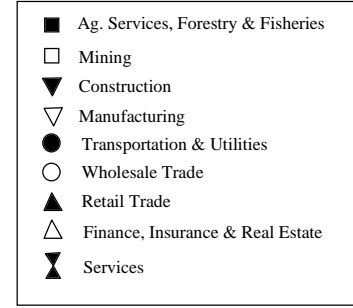
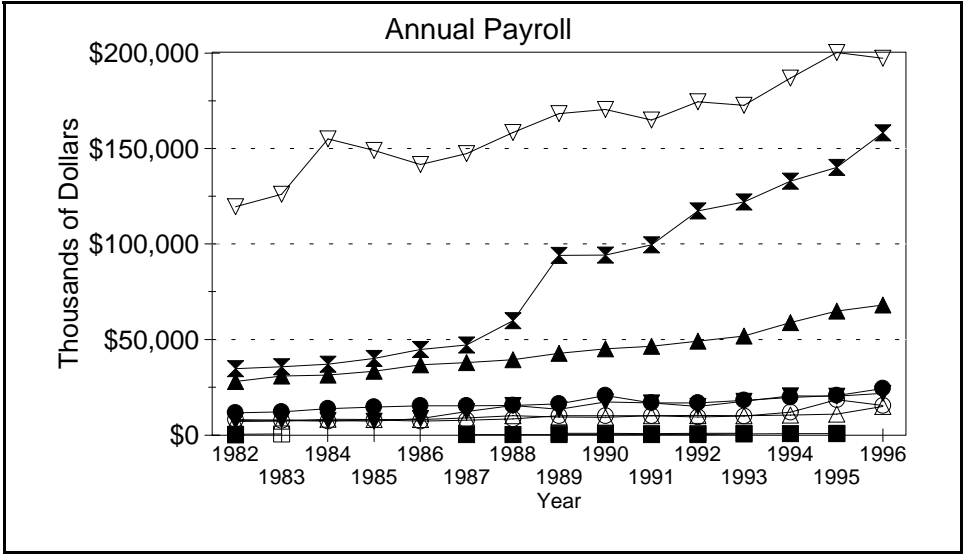
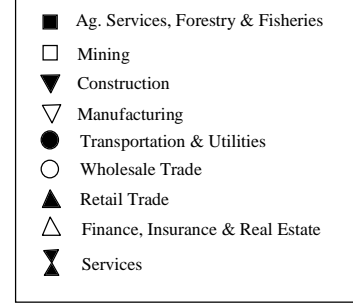
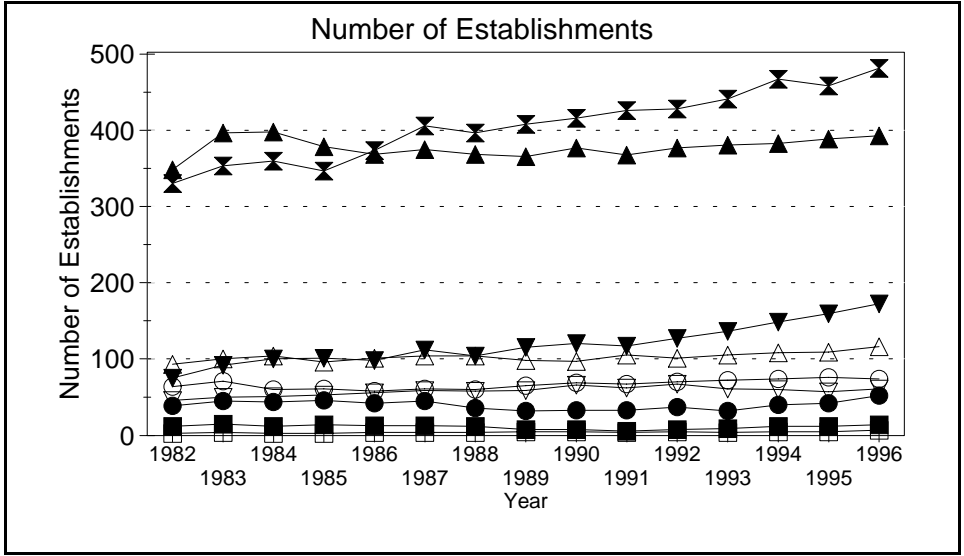
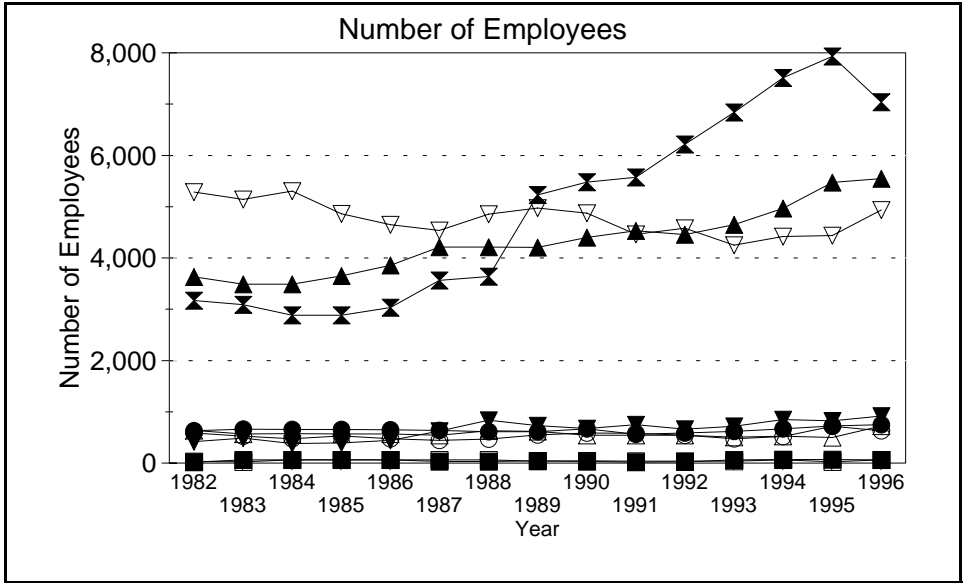


Business Statistics



Source: County Business Patterns, Ohio. These data are derived from all wage and salary employment covered by FICA which includes private non-farm employers and non-profit organizations, but does not include farms and the self employed.

Business Statistics

Number of Employees

Year	Ag. Services, Forestry, Fisheries*	Mining	Construction	Manufacturing	Transportation & Utilities	Wholesale Trade	Retail Trade	Finance, Insurance, Real Estate	Services	Not Classifiable	Total
1982	20	33	416	5,287	632	585	3,634	639	3,173	28	14,447
1983	B	28	484	5,141	659	523	3,490	569	3,088	B	14,061
1984	B	B	379	5,307	653	477	3,487	575	2,884	109	13,932
1985	B	B	395	4,863	657	532	3,653	569	2,886	169	13,775
1986	B	B	446	4,649	647	477	3,855	570	3,031	183	13,943
1987	31	B	626	4,534	638	441	4,210	544	3,564	B	14,649
1988	31	B	834	4,858	613	469	4,210	633	3,638	B	15,416
1989	43	37	729	4,972	609	548	4,207	618	5,227	127	17,117
1990	30	42	672	4,871	666	589	4,398	542	5,482	16	17,308
1991	18	37	751	4,460	561	578	4,530	544	5,575	15	17,069
1992	25	40	661	4,582	587	544	4,455	544	6,213	3	17,654
1993	64	39	719	4,250	618	475	4,647	506	6,839	2	18,159
1994	66	B	851	4,417	665	520	4,968	522	7,513	A	19,559
1995	68	24	821	4,437	723	720	5,474	502	7,931	6	20,706
1996	B	B	917	4,933	746	630	5,548	725	7,038	6	20,647

Number of Establishments

Year	Ag. Services, Forestry, Fisheries*	Mining	Construction	Manufacturing	Transportation & Utilities	Wholesale Trade	Retail Trade	Finance, Insurance, Real Estate	Services	Not Classifiable	Total
1982	12	3	75	46	39	64	347	93	329	19	1,027
1983	15	4	92	50	45	71	395	100	352	32	1,156
1984	12	3	100	51	44	60	396	104	358	66	1,194
1985	14	3	101	53	46	61	377	96	345	96	1,192
1986	13	4	98	56	42	58	367	101	372	86	1,197
1987	13	4	112	59	45	61	373	104	404	28	1,203
1988	12	4	104	58	36	60	367	104	395	71	1,211
1989	8	5	115	59	32	65	364	98	406	55	1,207
1990	8	5	120	66	33	69	375	97	414	32	1,219
1991	6	4	117	62	33	67	366	105	424	23	1,207
1992	8	5	127	67	37	70	375	101	426	7	1,223
1993	9	4	136	61	32	72	379	105	439	12	1,249
1994	12	5	148	60	40	74	381	108	465	9	1,302
1995	12	5	159	57	42	76	387	109	456	12	1,315
1996	14	7	172	61	52	74	391	116	479	6	1,372

Annual Payroll (Thousands of Dollars)

Year	Ag. Services, Forestry, Fisheries*	Mining	Construction	Manufacturing	Transportation & Utilities	Wholesale Trade	Retail Trade	Finance, Insurance, Real Estate	Services	Not Classifiable	Total
1982	152	559	7,700	119,302	11,668	8,129	28,099	7,170	34,726	141	217,646
1983	D	656	7,980	125,866	12,246	7,689	30,978	7,392	35,825	D	229,258
1984	D	D	7,639	154,681	13,865	7,420	31,474	8,308	37,122	1,055	262,579
1985	D	D	7,294	148,704	14,701	8,041	33,460	8,260	40,136	1,545	263,277
1986	D	D	8,763	141,379	15,427	7,332	36,739	8,180	44,700	2,254	266,143
1987	375	D	12,343	147,026	15,341	7,925	37,847	9,050	47,077	D	278,407
1988	328	D	15,582	158,115	15,468	8,494	39,504	10,252	59,799	D	311,782
1989	292	1,034	13,559	167,972	16,402	10,131	42,739	9,442	93,933	1,372	356,876
1990	289	949	17,440	170,044	20,793	10,269	45,082	9,294	94,110	223	368,493
1991	292	874	16,928	164,540	16,910	10,188	46,405	10,147	99,476	179	365,939
1992	393	986	15,048	174,038	16,930	9,534	49,174	10,419	117,095	64	393,681
1993	675	1,032	17,680	172,230	18,244	9,978	51,877	10,265	121,876	71	403,928
1994	852	D	20,520	186,392	19,794	12,012	58,823	10,596	132,653	D	442,571
1995	913	958	20,308	199,914	20,720	18,582	64,770	10,981	139,859	142	477,147
1996	D	D	21,883	196,775	24,343	15,598	67,922	15,074	157,897	66	501,966

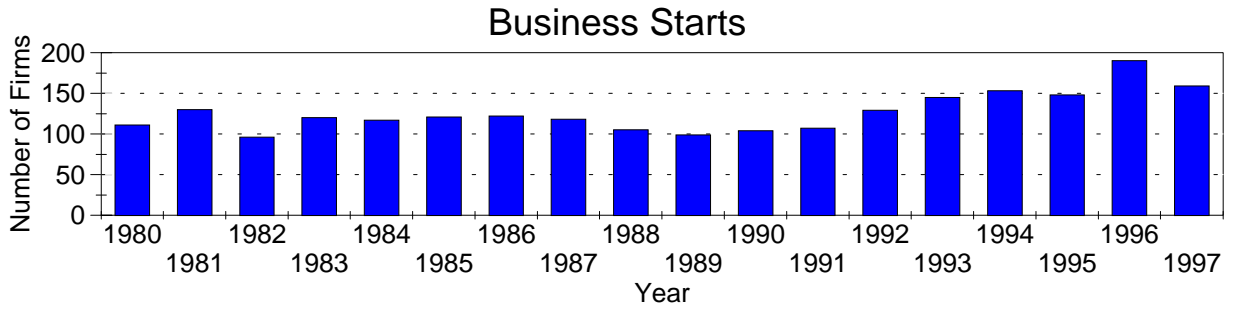
A=0-19, B=20-99, C=100-249, D=figures withheld, E=250-499,

F=500-999, G=1,000-2,499, H=2,500-4,999, I=5,000-9,999,

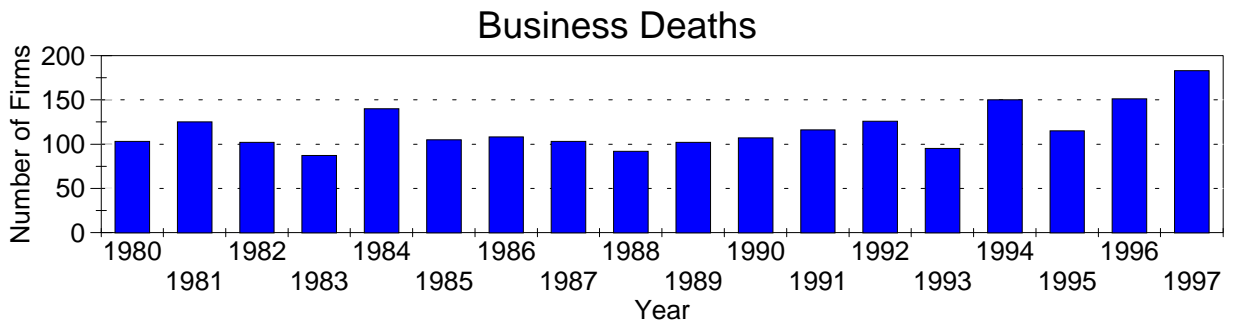
J=10,000-24,999, K=25,000-49,999, L=50,000-99,999, M=100,000 or more

*Ag. Services, Forestry & Fisheries include only non-farm businesses.

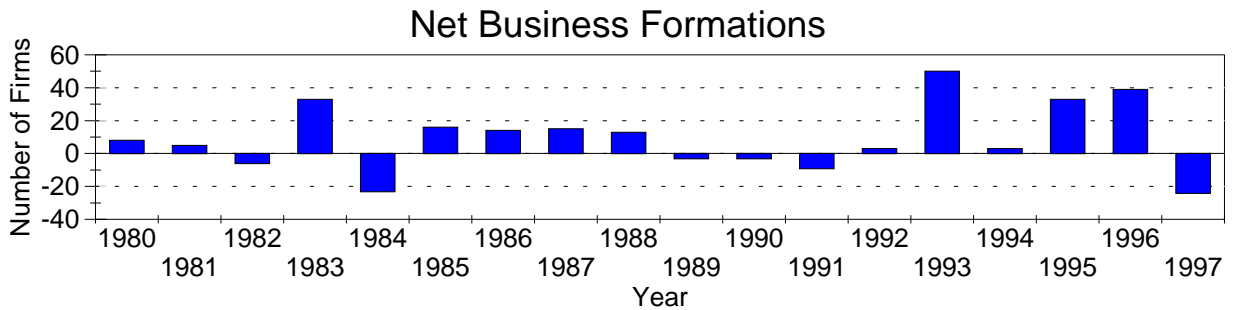
Business Statistics



Business starts and business deaths are determined from workers compensation records.



Business starts less business deaths equal net business formations.



Business Starts

Year	Number of Firms
1980	111
1981	130
1982	96
1983	120
1984	117
1985	121
1986	122
1987	118
1988	105
1989	99
1990	104
1991	107
1992	129
1993	145
1994	153
1995	148
1996	190
1997	159

Business Deaths

Year	Number of Firms
1980	103
1981	125
1982	102
1983	87
1984	140
1985	105
1986	108
1987	103
1988	92
1989	102
1990	107
1991	116
1992	126
1993	95
1994	150
1995	115
1996	151
1997	183

Net Business Formations

Year	Number of Firms
1980	8
1981	5
1982	-6
1983	33
1984	-23
1985	16
1986	14
1987	15
1988	13
1989	-3
1990	-3
1991	-9
1992	3
1993	50
1994	3
1995	33
1996	39
1997	-24

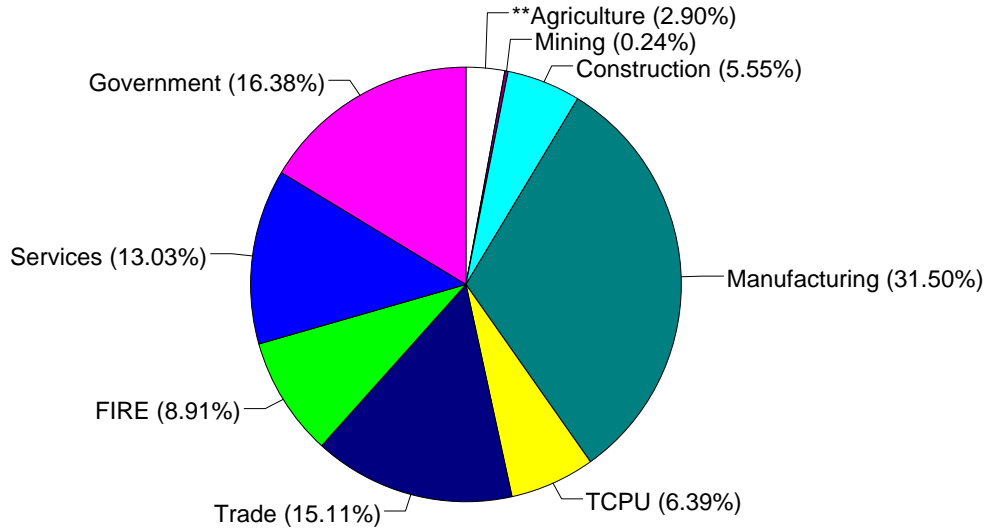
Source: Components of Business Change, Ohio Department of Development, Office of Strategic Research

Economic Structure

Total Value Added:
\$1,247.09 million.

Value Added by Sector (1993)*

Value Added is a broad measure of income that includes employee compensations, business profits, and returns to property, plant, and equipment.



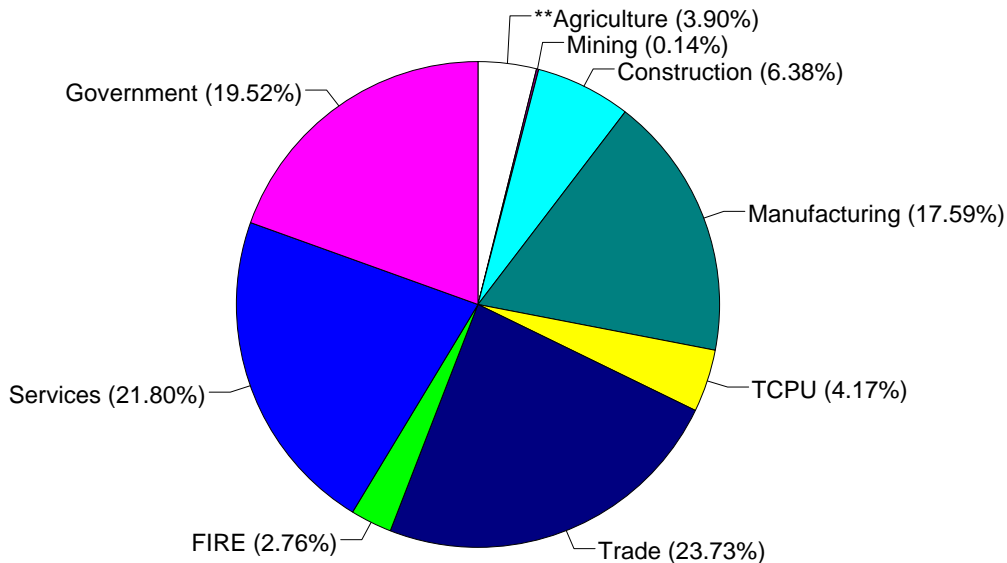
TCPU=Transportation, Communication, and Public Utilities.
FIRE=Finance, Insurance, and Real Estate.

*These estimates include many components not reported in other sources such as farms, self-employed, and small firms.

**Agriculture/Fishing/Forestry sector includes production agriculture (farm), agricultural services, forestry, and fishing enterprises.

Total Employment:
31,067 workers.

1993 Employment by Sector*



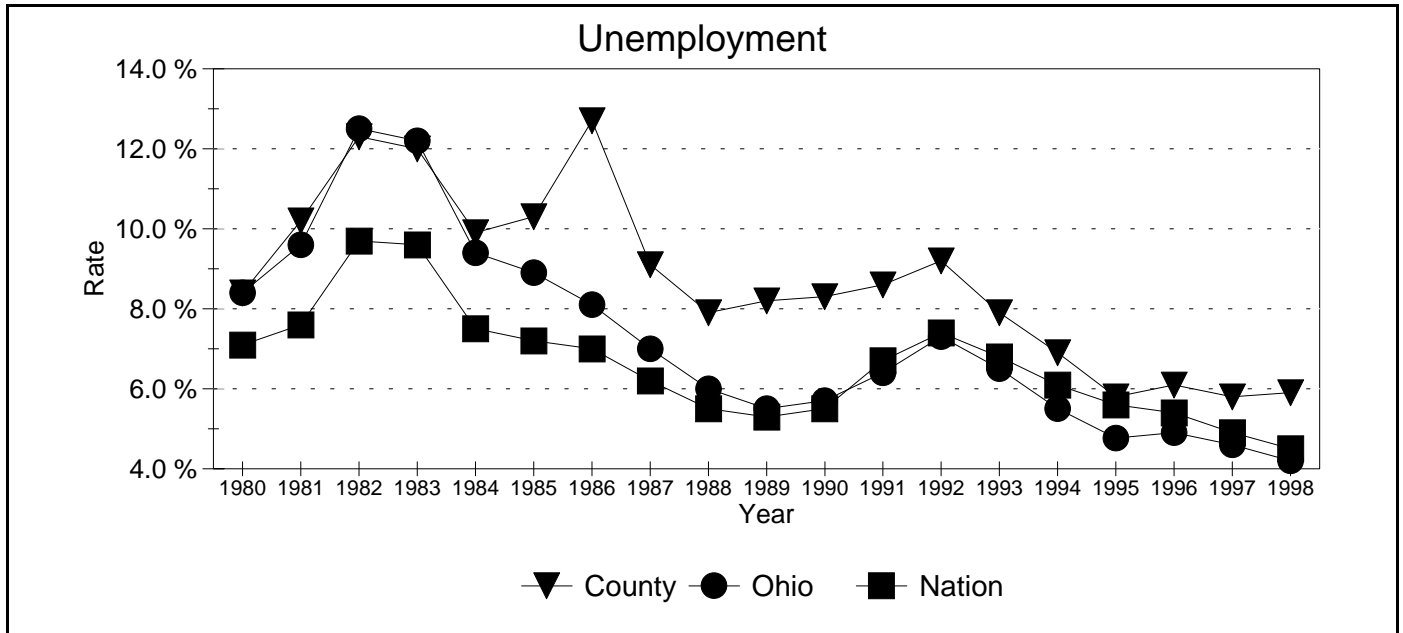
TCPU=Transportation, Communication, and Public Utilities.
FIRE=Finance, Insurance, and Real Estate.

*These estimates include many components not reported in other sources such as farms, self-employed, and small firms.

**Agriculture/Fishing/Forestry sector includes production agriculture (farm), agricultural services, forestry, and fishing enterprises.

Source: 1993 IMPLAN database, Minnesota Implan Group. IMPLAN is a non-survey regional input-output account generator originally developed by the U.S. Forest Service. These estimates provide a full picture of the county's economy.

Unemployment Statistics



Source: Bureau of Labor Statistics

Commuting Statistics

Residents retained in Ross County:
19,693.

Residents of Neighboring Counties Working in Ross County, 1990

County of Residence	Number of Incommuters
Pike	1,263
Pickaway	590
Jackson	451
Vinton	441
Franklin	303
Scioto	260
Highland	220

Residents of Ross County Working in Neighboring Counties, 1990

County of Work	Number of Outcommuters
Pickaway	1,941
Franklin	1,407
Pike	827
Highland	612
Fayette	325
Jackson	81
Hocking	81

Source: U.S. Census Bureau, 1990 Census Summary Tape File S-5.