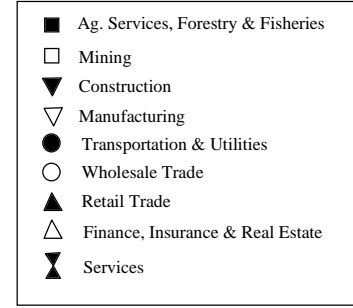
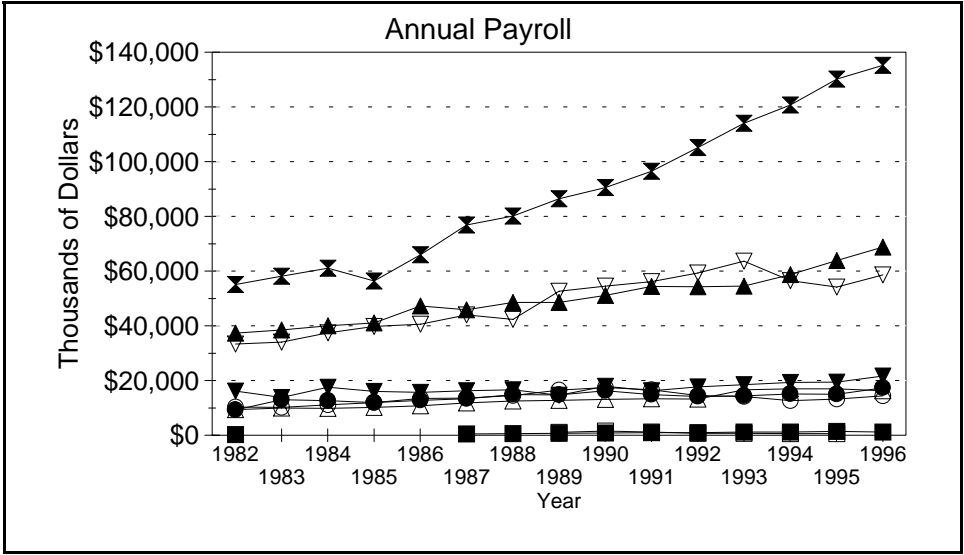
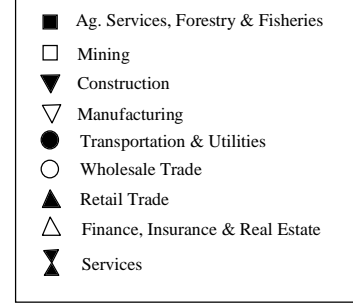
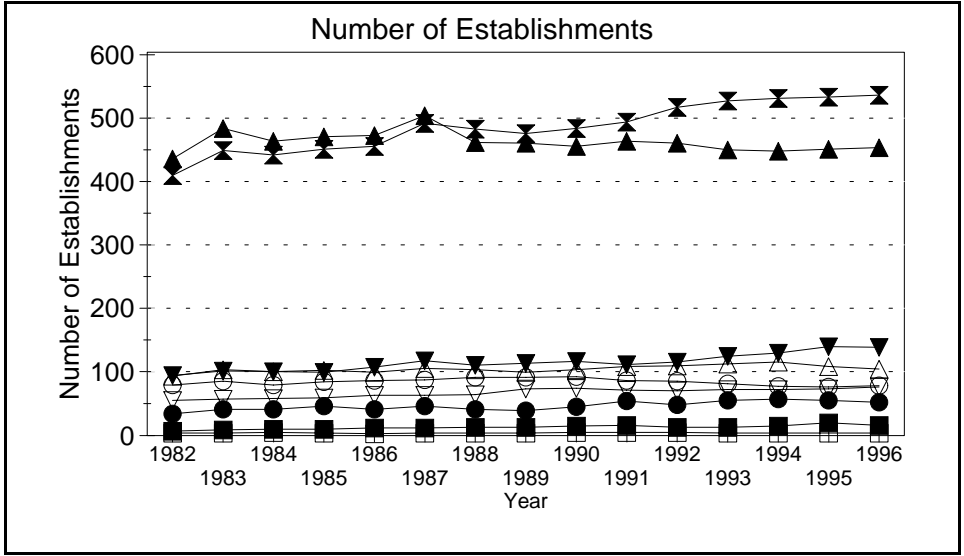
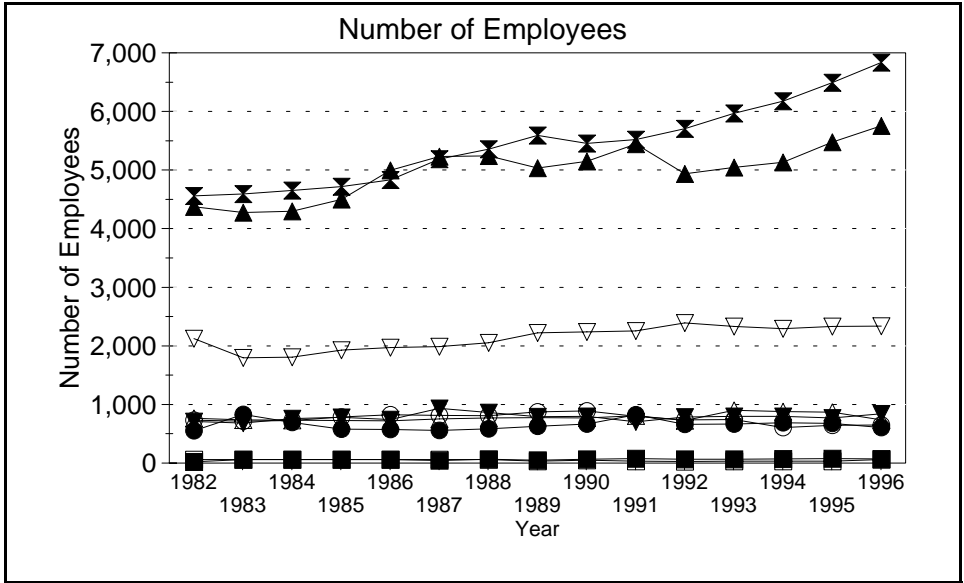


Business Statistics



Source: County Business Patterns, Ohio. These data are derived from all wage and salary employment covered by FICA which includes private non-farm employers and non-profit organizations, but does not include farms and the self employed.

Business Statistics

Number of Employees

Year	Ag. Services, Forestry, Fisheries*	Mining	Construction	Manufacturing	Transportation & Utilities	Wholesale Trade	Retail Trade	Finance, Insurance, Real Estate	Services	Not Classifiable	Total
1982	23	B	708	2,122	552	730	4,376	765	4,560	A	13,887
1983	B	B	682	1,798	829	717	4,277	736	4,591	65	13,760
1984	B	B	757	1,810	695	727	4,296	730	4,652	206	13,962
1985	B	B	781	1,927	580	788	4,499	728	4,718	165	14,273
1986	B	B	741	1,972	572	824	4,997	723	4,834	105	14,855
1987	46	B	934	1,990	558	811	5,233	755	5,185	B	15,580
1988	65	B	860	2,052	586	810	5,241	772	5,357	C	15,899
1989	49	35	790	2,225	626	876	5,034	775	5,589	189	16,188
1990	68	50	795	2,237	664	890	5,149	772	5,455	58	16,138
1991	79	33	705	2,256	824	796	5,444	807	5,523	34	16,501
1992	68	30	786	2,391	659	738	4,934	726	5,705	5	16,042
1993	67	32	796	2,334	664	745	5,047	899	5,968	11	16,563
1994	69	31	797	2,293	689	605	5,132	880	6,176	10	16,682
1995	78	35	771	2,334	676	642	5,479	866	6,491	10	17,382
1996	72	B	842	2,337	607	651	5,757	737	6,837	A	17,870

Number of Establishments

Year	Ag. Services, Forestry, Fisheries*	Mining	Construction	Manufacturing	Transportation & Utilities	Wholesale Trade	Retail Trade	Finance, Insurance, Real Estate	Services	Not Classifiable	Total
1982	7	4	94	55	34	79	433	93	407	13	1,219
1983	9	4	101	57	41	85	481	103	446	47	1,374
1984	10	5	100	58	41	79	461	100	439	99	1,392
1985	10	4	99	59	46	84	468	102	448	110	1,430
1986	12	3	107	63	41	86	470	99	453	102	1,436
1987	12	4	117	63	46	87	501	105	489	28	1,452
1988	13	4	110	64	41	91	459	103	480	88	1,453
1989	13	4	113	73	39	91	458	99	473	85	1,448
1990	15	5	116	74	45	92	453	103	481	53	1,437
1991	16	5	111	71	54	86	461	108	491	29	1,432
1992	13	5	115	70	48	85	458	109	514	14	1,431
1993	13	4	124	72	55	81	447	112	524	11	1,443
1994	15	4	129	72	57	77	445	115	528	11	1,453
1995	20	4	139	73	55	76	448	108	530	13	1,466
1996	16	4	138	76	52	78	451	104	533	1	1,453

Annual Payroll (Thousands of Dollars)

Year	Ag. Services, Forestry, Fisheries*	Mining	Construction	Manufacturing	Transportation & Utilities	Wholesale Trade	Retail Trade	Finance, Insurance, Real Estate	Services	Not Classifiable	Total
1982	200	D	16,109	33,384	9,275	10,260	37,301	9,385	55,071	D	172,118
1983	D	D	13,821	33,986	12,955	10,145	38,452	9,922	58,161	962	179,879
1984	D	D	17,515	37,388	12,635	11,069	40,021	9,837	61,052	2,319	193,310
1985	D	D	15,977	39,729	11,946	11,923	41,009	10,229	56,366	1,539	189,898
1986	D	D	15,666	40,614	12,763	13,443	47,265	10,733	65,918	1,795	209,415
1987	526	D	16,309	43,994	13,287	13,589	45,832	11,804	76,811	D	223,471
1988	618	D	16,550	42,355	14,860	14,520	48,517	12,548	80,143	D	232,742
1989	658	1,041	14,656	52,633	14,781	16,541	48,582	12,787	86,434	2,023	250,136
1990	798	1,477	17,926	54,456	16,297	17,404	51,138	13,154	90,526	556	263,732
1991	994	1,150	16,239	56,139	14,815	16,610	54,416	13,309	96,487	607	270,766
1992	967	647	17,649	59,295	14,144	14,550	54,302	13,164	105,192	52	279,962
1993	1,121	708	18,515	63,617	14,352	14,138	54,558	16,595	113,994	105	297,703
1994	1,115	592	19,355	56,514	15,073	12,580	58,677	16,990	120,674	111	301,681
1995	1,360	565	19,439	54,158	14,972	13,220	63,867	16,998	130,129	136	314,844
1996	1,206	D	21,583	58,559	17,359	14,378	68,756	16,247	135,194	D	333,889

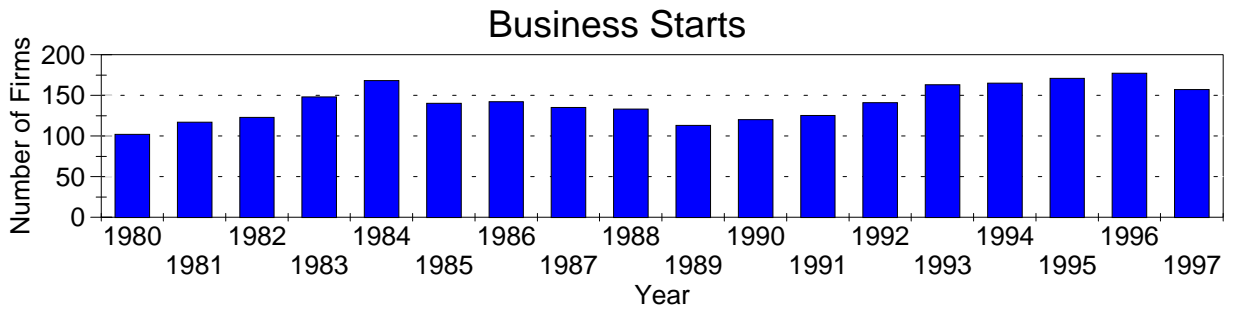
A=0-19, B=20-99, C=100-249, D=figures withheld, E=250-499,

F=500-999, G=1,000-2,499, H=2,500-4,999, I=5,000-9,999,

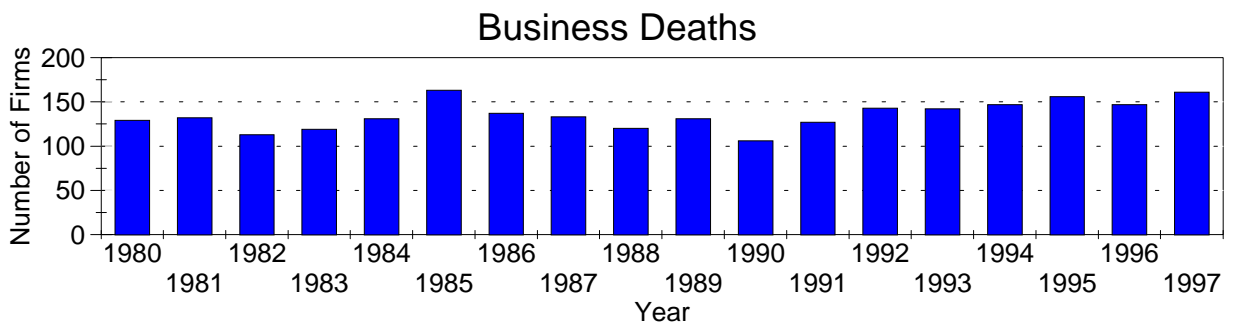
J=10,000-24,999, K=25,000-49,999, L=50,000-99,999, M=100,000 or more

*Ag. Services, Forestry & Fisheries include only non-farm businesses.

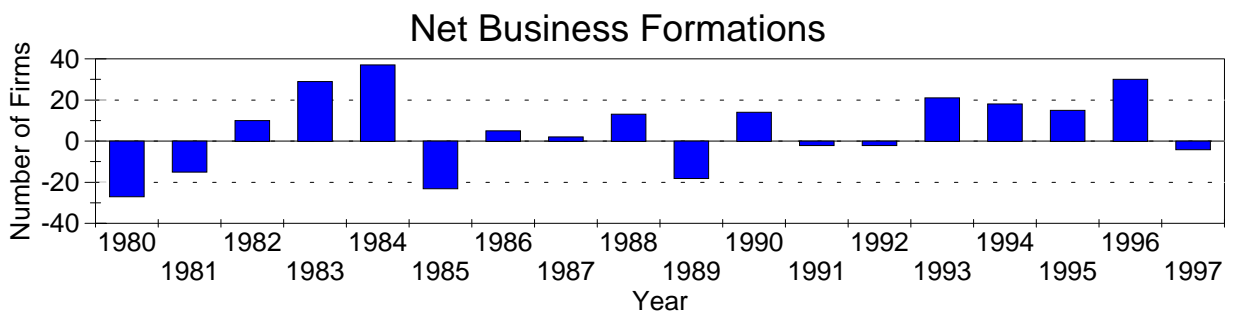
Business Statistics



Business starts and business deaths are determined from workers compensation records.



Business starts less business deaths equal net business formations.



Business Starts

Year	Number of Firms
1980	102
1981	117
1982	123
1983	148
1984	168
1985	140
1986	142
1987	135
1988	133
1989	113
1990	120
1991	125
1992	141
1993	163
1994	165
1995	171
1996	177
1997	157

Business Deaths

Year	Number of Firms
1980	129
1981	132
1982	113
1983	119
1984	131
1985	163
1986	137
1987	133
1988	120
1989	131
1990	106
1991	127
1992	143
1993	142
1994	147
1995	156
1996	147
1997	161

Net Business Formations

Year	Number of Firms
1980	-27
1981	-15
1982	10
1983	29
1984	37
1985	-23
1986	5
1987	2
1988	13
1989	-18
1990	14
1991	-2
1992	-2
1993	21
1994	18
1995	15
1996	30
1997	-4

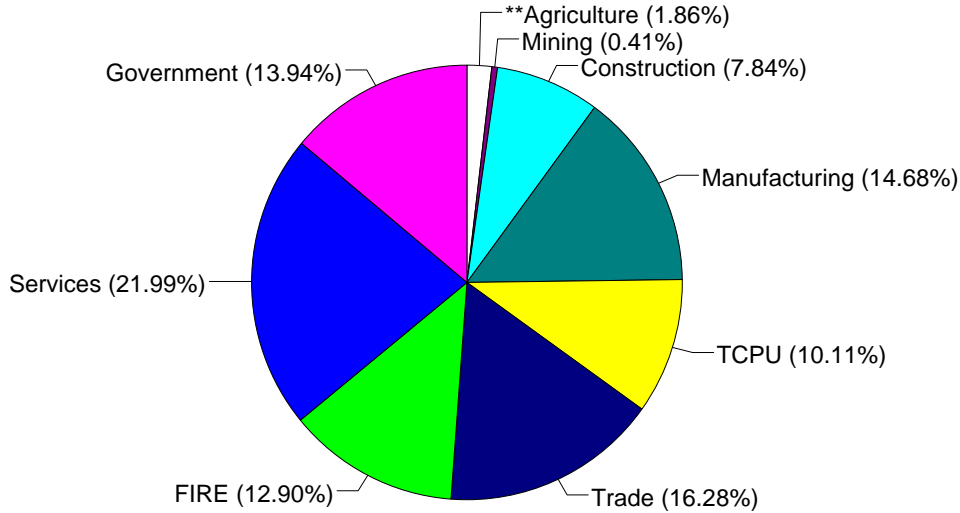
Source: Components of Business Change, Ohio Department of Development, Office of Strategic Research

Economic Structure

Total Value Added:
\$972.48 million.

Value Added by Sector (1993)*

Value Added is a broad measure of income that includes employee compensations, business profits, and returns to property, plant, and equipment.



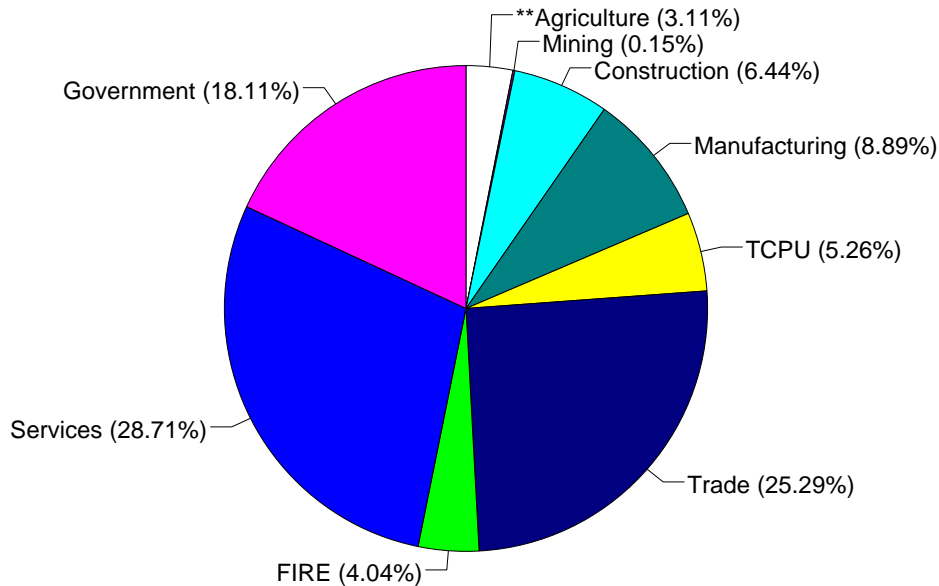
TCPU=Transportation, Communication, and Public Utilities.
FIRE=Finance, Insurance, and Real Estate.

*These estimates include many components not reported in other sources such as farms, self-employed, and small firms.

**Agriculture/Fishing/Forestry sector includes production agriculture (farm), agricultural services, forestry, and fishing enterprises.

Total Employment:
29,072 workers.

1993 Employment by Sector*



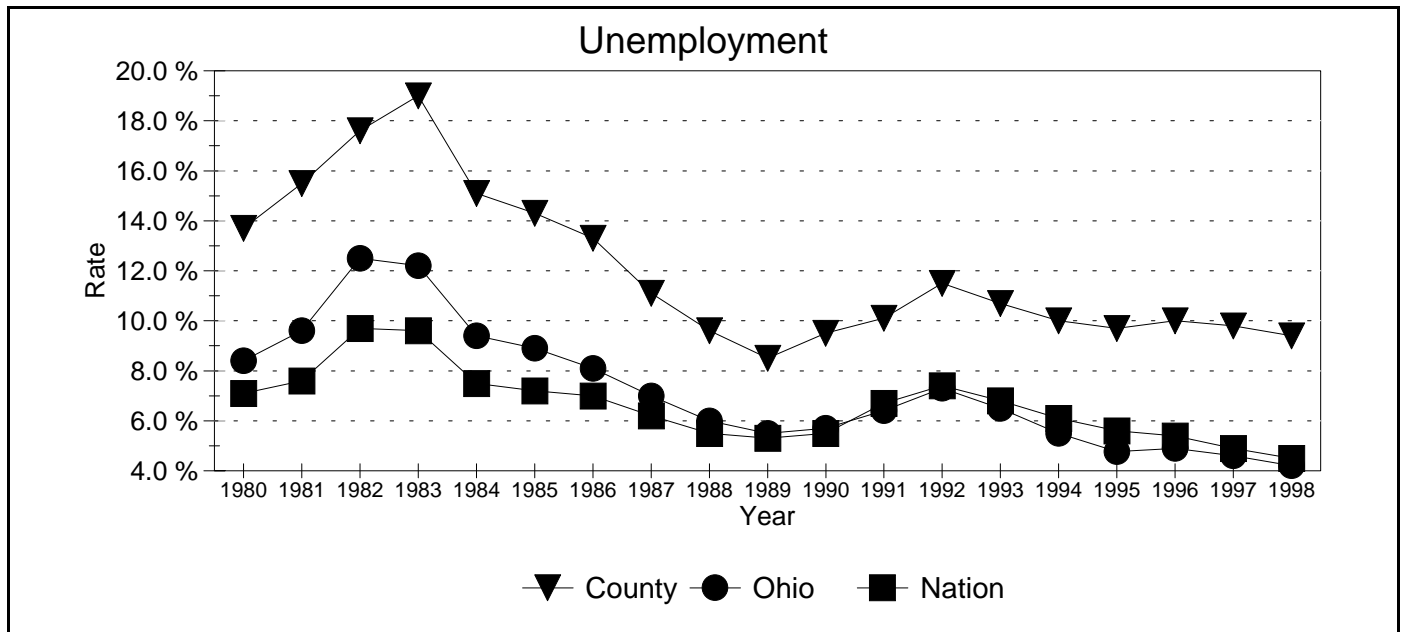
TCPU=Transportation, Communication, and Public Utilities.
FIRE=Finance, Insurance, and Real Estate.

*These estimates include many components not reported in other sources such as farms, self-employed, and small firms.

**Agriculture/Fishing/Forestry sector includes production agriculture (farm), agricultural services, forestry, and fishing enterprises.

Source: 1993 IMPLAN database, Minnesota Implan Group. IMPLAN is a non-survey regional input-output account generator originally developed by the U.S. Forest Service. These estimates provide a full picture of the county's economy.

Unemployment Statistics



Source: Bureau of Labor Statistics

Commuting Statistics

Residents retained in Scioto County:
19,938.

Residents of Neighboring Counties Working in Scioto County, 1990

County of Residence	Number of Incommuters
Greenup (KY)	1,038
Lawrence	460
Pike	389
Lewis (KY)	232
Jackson	147
Adams	136
Carter (KY)	81

Residents of Scioto County Working in Neighboring Counties, 1990

County of Work	Number of Outcommuters
Pike	1,534
Lawrence	517
Boyd (KY)	338
Franklin	306
Adams	297
Greenup (KY)	295
Ross	260

Source: U.S. Census Bureau, 1990 Census Summary Tape File S-5.