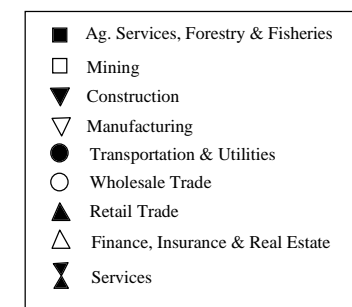
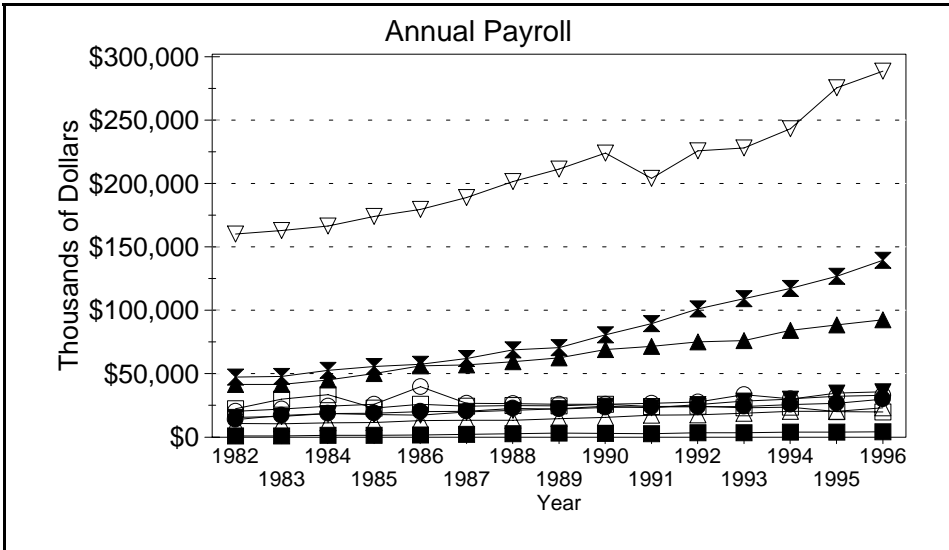
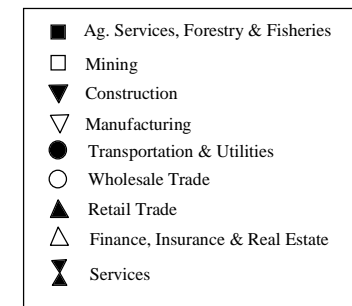
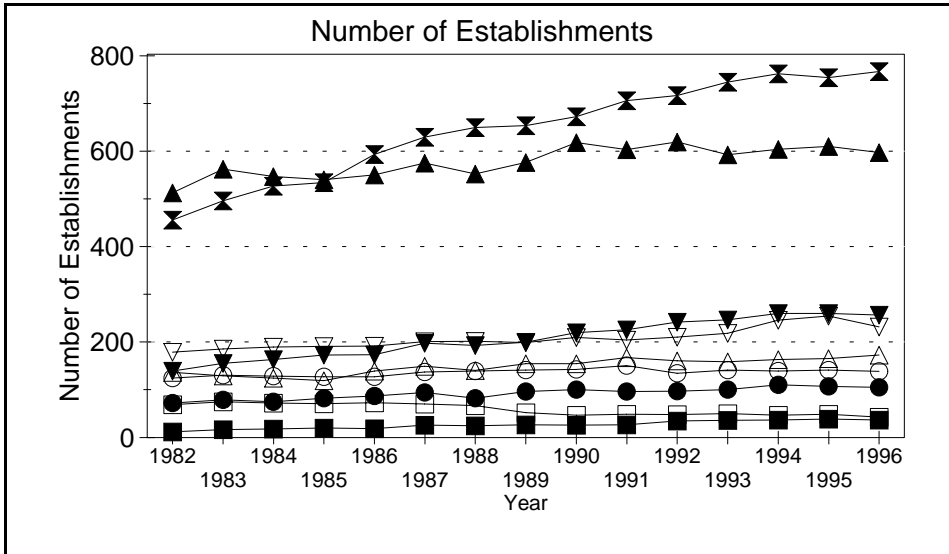
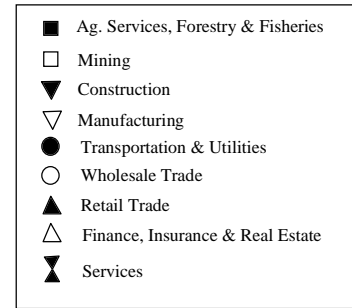
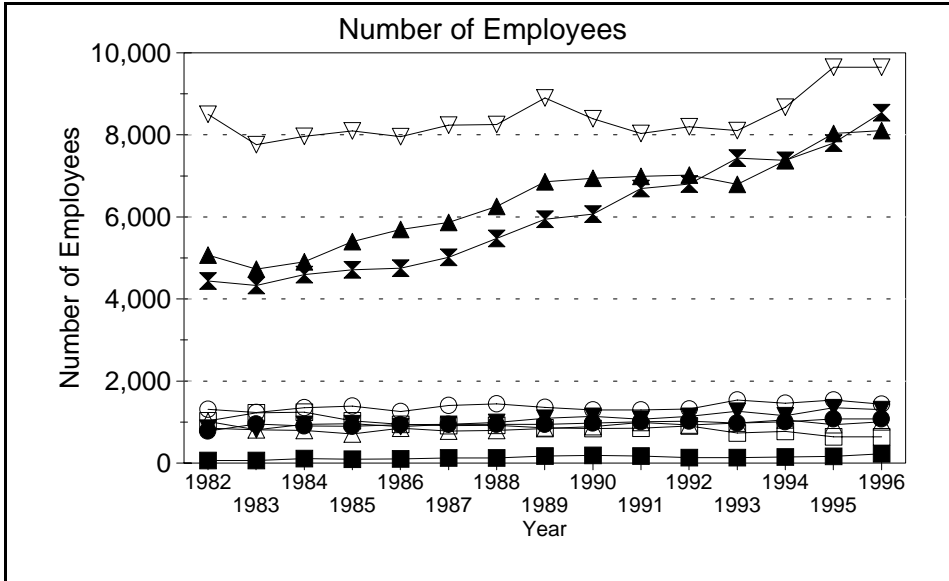


Business Statistics



Source: County Business Patterns, Ohio. These data are derived from all wage and salary employment covered by FICA which includes private non-farm employers and non-profit organizations, but does not include farms and the self employed.

Business Statistics

Number of Employees

Year	Ag. Services, Forestry, Fisheries*	Mining	Construction	Manufacturing	Transportation & Utilities	Wholesale Trade	Retail Trade	Finance, Insurance, Real Estate	Services	Not Classifiable	Total
1982	59	1,032	848	8,506	777	1,311	5,071	1,016	4,442	7	23,069
1983	63	1,226	811	7,759	948	1,234	4,730	809	4,326	64	21,970
1984	108	1,243	947	7,961	906	1,351	4,903	797	4,596	349	23,161
1985	96	1,027	958	8,099	899	1,390	5,396	713	4,712	465	23,755
1986	99	944	893	7,954	937	1,258	5,696	847	4,750	302	23,680
1987	124	912	944	8,237	947	1,403	5,869	778	5,014	38	24,266
1988	124	920	988	8,255	946	1,443	6,253	796	5,477	191	25,393
1989	169	859	1,091	8,900	941	1,355	6,853	843	5,944	252	27,207
1990	186	843	1,139	8,395	977	1,293	6,940	891	6,067	79	26,810
1991	168	847	1,070	8,038	1,004	1,291	6,986	990	6,689	45	27,128
1992	133	906	1,141	8,197	1,021	1,320	7,018	927	6,798	7	27,468
1993	131	735	1,267	8,105	974	1,533	6,794	973	7,434	20	27,966
1994	145	771	1,158	8,677	1,007	1,457	7,372	1,051	7,379	26	29,043
1995	162	636	1,353	9,650	1,078	1,538	8,035	937	7,801	5	31,195
1996	223	637	1,300	9,650	1,077	1,433	8,102	1,007	8,538	0	31,967

Number of Establishments

Year	Ag. Services, Forestry, Fisheries*	Mining	Construction	Manufacturing	Transportation & Utilities	Wholesale Trade	Retail Trade	Finance, Insurance, Real Estate	Services	Not Classifiable	Total
1982	12	69	139	178	72	124	511	136	454	15	1,710
1983	17	75	155	185	79	130	560	129	494	59	1,883
1984	18	72	163	189	75	128	545	124	525	161	2,000
1985	20	71	172	190	82	127	538	119	532	216	2,067
1986	19	73	173	191	87	127	548	139	591	156	2,104
1987	26	70	197	200	94	137	573	149	627	31	2,104
1988	25	67	192	201	82	139	550	140	647	123	2,166
1989	27	52	199	198	96	141	574	154	651	136	2,228
1990	26	47	219	209	100	142	616	154	670	77	2,260
1991	27	49	225	204	96	150	601	167	703	40	2,262
1992	35	48	241	210	97	134	617	160	714	18	2,274
1993	36	50	246	218	100	141	590	158	742	25	2,306
1994	37	47	259	245	110	139	602	163	759	18	2,379
1995	39	49	259	254	107	141	608	165	751	17	2,390
1996	37	43	256	231	105	138	595	172	764	4	2,345

Annual Payroll (Thousands of Dollars)

Year	Ag. Services, Forestry, Fisheries*	Mining	Construction	Manufacturing	Transportation & Utilities	Wholesale Trade	Retail Trade	Finance, Insurance, Real Estate	Services	Not Classifiable	Total
1982	906	22,385	15,591	159,183	13,723	20,200	41,401	10,760	47,119	76	331,345
1983	1,101	29,749	16,299	161,952	17,158	22,037	41,285	10,558	47,612	1,034	348,785
1984	1,431	33,342	18,450	165,491	18,471	24,319	44,819	11,197	52,279	3,885	373,684
1985	1,519	22,726	17,852	172,957	18,791	25,840	49,762	11,619	55,305	3,356	379,727
1986	1,871	25,707	17,237	178,568	20,151	39,668	55,992	12,928	57,243	3,418	412,783
1987	2,283	24,231	19,758	187,706	20,288	26,621	56,571	13,269	61,708	302	412,737
1988	2,700	24,921	20,996	200,191	22,491	26,335	59,091	13,200	68,423	2,494	440,842
1989	3,143	24,639	22,345	209,917	21,934	25,804	62,068	14,463	70,267	4,075	458,655
1990	2,984	25,789	24,273	222,467	23,365	25,749	68,596	15,484	80,091	799	489,597
1991	2,854	24,132	23,070	202,674	23,758	26,457	71,080	17,279	88,863	1,125	481,292
1992	3,509	24,405	25,519	224,414	23,916	27,497	74,595	17,561	100,439	295	522,150
1993	3,459	23,017	28,405	226,654	23,991	33,267	75,640	18,686	108,580	253	541,952
1994	3,892	23,444	29,754	241,544	25,618	30,117	83,832	20,235	116,534	219	575,189
1995	4,133	20,138	34,607	273,668	26,505	32,012	87,922	20,373	125,968	112	625,438
1996	4,325	19,790	35,698	286,801	29,843	32,847	91,934	23,018	138,646	12	662,914

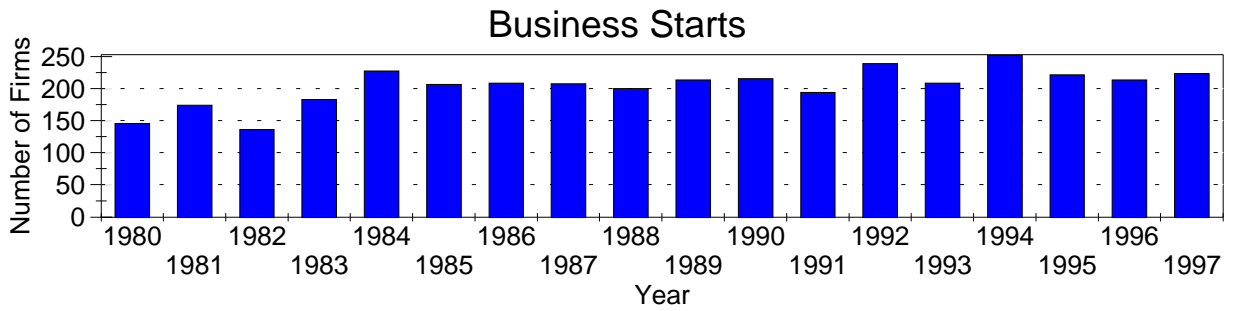
A=0-19, B=20-99, C=100-249, D=figures withheld, E=250-499,

F=500-999, G=1,000-2,499, H=2,500-4,999, I=5,000-9,999,

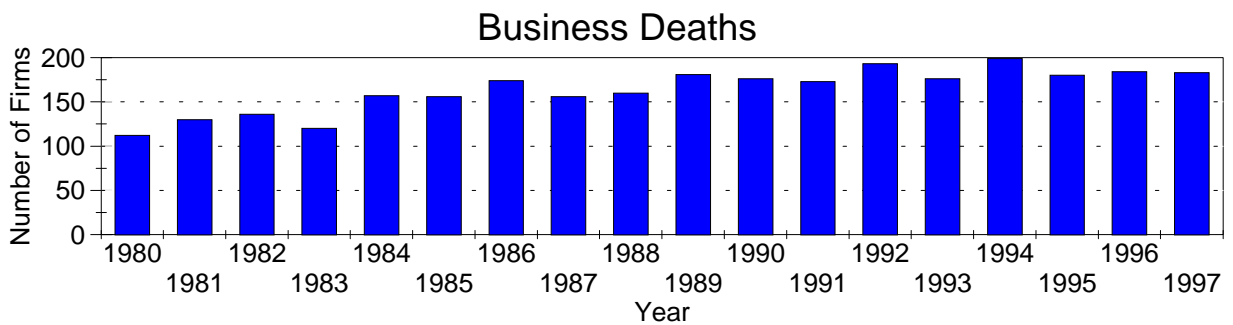
J=10,000-24,999, K=25,000-49,999, L=50,000-99,999, M=100,000 or more

*Ag. Services, Forestry & Fisheries include only non-farm businesses.

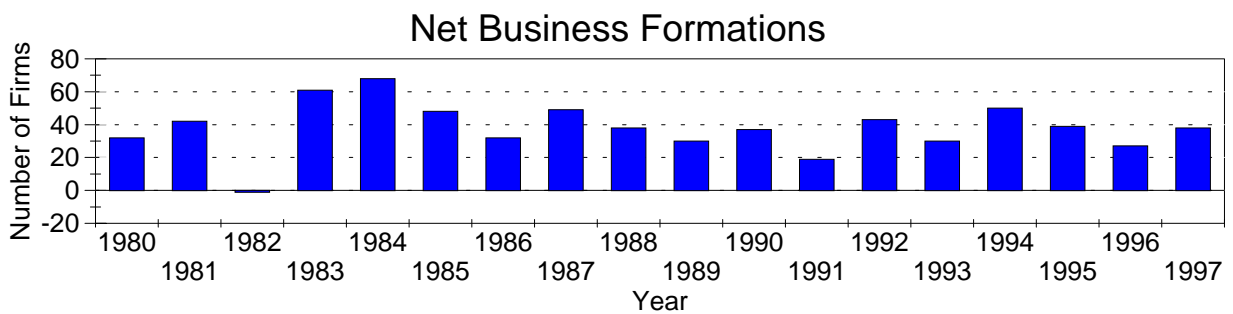
Business Statistics



Business starts and business deaths are determined from workers compensation records.



Business starts less business deaths equal net business formations.



Business Starts

Year	Number of Firms
1980	144
1981	172
1982	135
1983	181
1984	225
1985	204
1986	206
1987	205
1988	198
1989	211
1990	213
1991	192
1992	236
1993	206
1994	249
1995	219
1996	211
1997	221

Business Deaths

Year	Number of Firms
1980	112
1981	130
1982	136
1983	120
1984	157
1985	156
1986	174
1987	156
1988	160
1989	181
1990	176
1991	173
1992	193
1993	176
1994	199
1995	180
1996	184
1997	183

Net Business Formations

Year	Number of Firms
1980	32
1981	42
1982	-1
1983	61
1984	68
1985	48
1986	32
1987	49
1988	38
1989	30
1990	37
1991	19
1992	43
1993	30
1994	50
1995	39
1996	27
1997	38

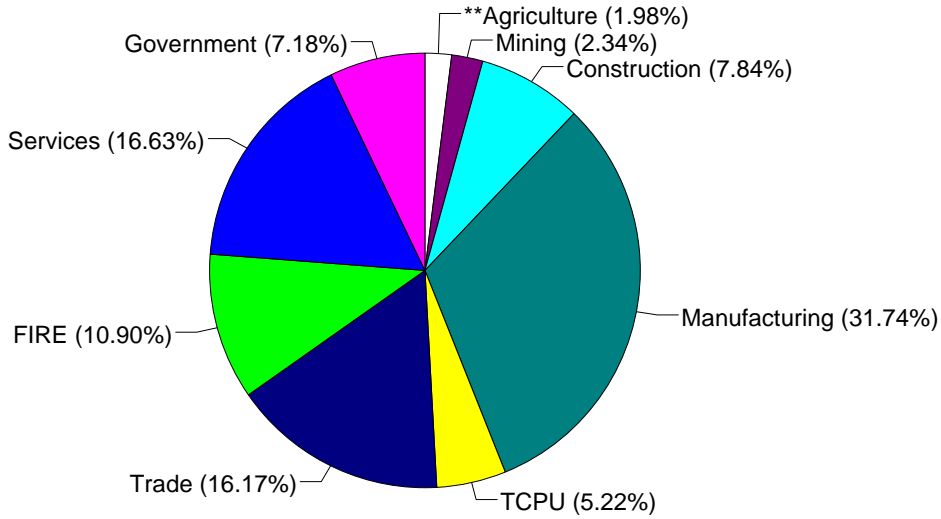
Source: Components of Business Change, Ohio Department of Development, Office of Strategic Research

Economic Structure

Total Value Added:
\$1,467.00 million.

Value Added by Sector (1993)*

Value Added is a broad measure of income that includes employee compensations, business profits, and returns to property, plant, and equipment.



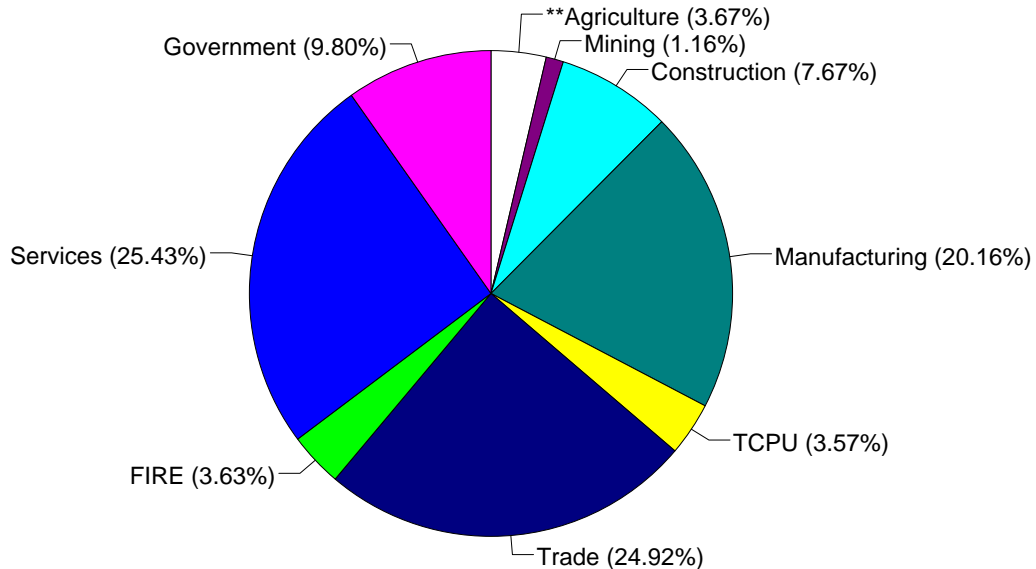
TCPU=Transportation, Communication, and Public Utilities.
FIRE=Finance, Insurance, and Real Estate.

*These estimates include many components not reported in other sources such as farms, self-employed, and small firms.

**Agriculture/Fishing/Forestry sector includes production agriculture (farm), agricultural services, forestry, and fishing enterprises.

Total Employment:
41,400 workers.

1993 Employment by Sector*



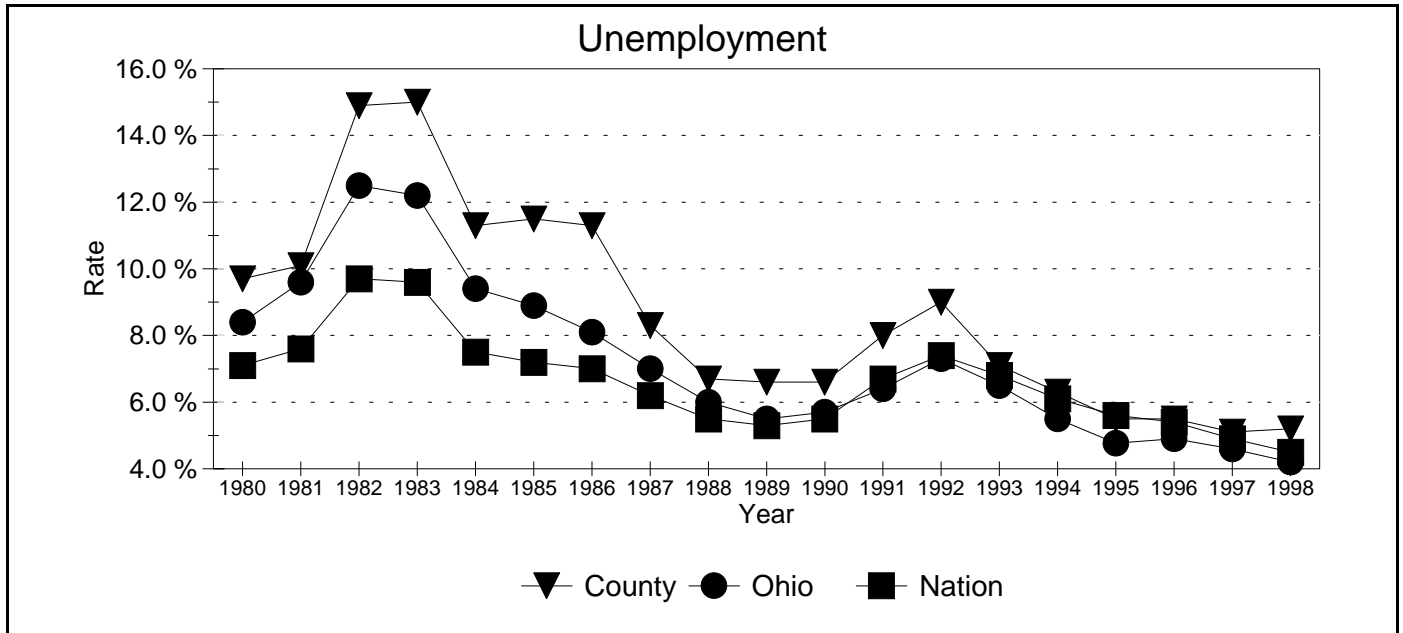
TCPU=Transportation, Communication, and Public Utilities.
FIRE=Finance, Insurance, and Real Estate.

*These estimates include many components not reported in other sources such as farms, self-employed, and small firms.

**Agriculture/Fishing/Forestry sector includes production agriculture (farm), agricultural services, forestry, and fishing enterprises.

Source: 1993 IMPLAN database, Minnesota Implan Group. IMPLAN is a non-survey regional input-output account generator originally developed by the U.S. Forest Service. These estimates provide a full picture of the county's economy.

Unemployment Statistics



Source: Bureau of Labor Statistics

Commuting Statistics

Residents retained in Tuscarawas County: 27,880.

Residents of Neighboring Counties Working in Tuscarawas County, 1990

County of Residence	Number of Incommuters
Stark	1,346
Harrison	756
Coshocton	637
Carroll	593
Holmes	587
Guernsey	319
Wayne	97

Residents of Tuscarawas County Working in Neighboring Counties, 1990

County of Work	Number of Outcommuters
Stark	3,888
Holmes	944
Coshocton	511
Summit	278
Carroll	248
Harrison	225
Wayne	204

Source: U.S. Census Bureau, 1990 Census Summary Tape File S-5.