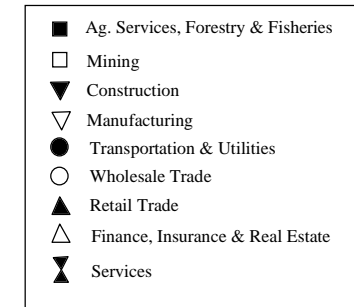
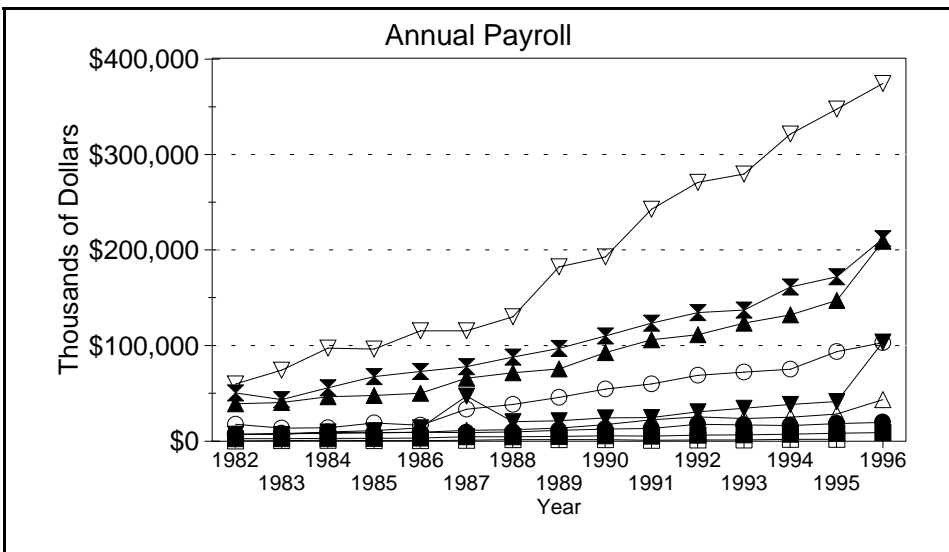
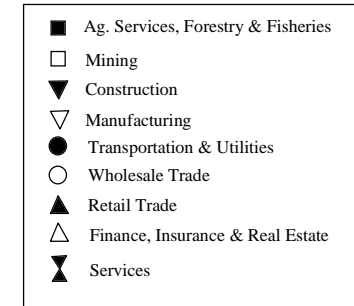
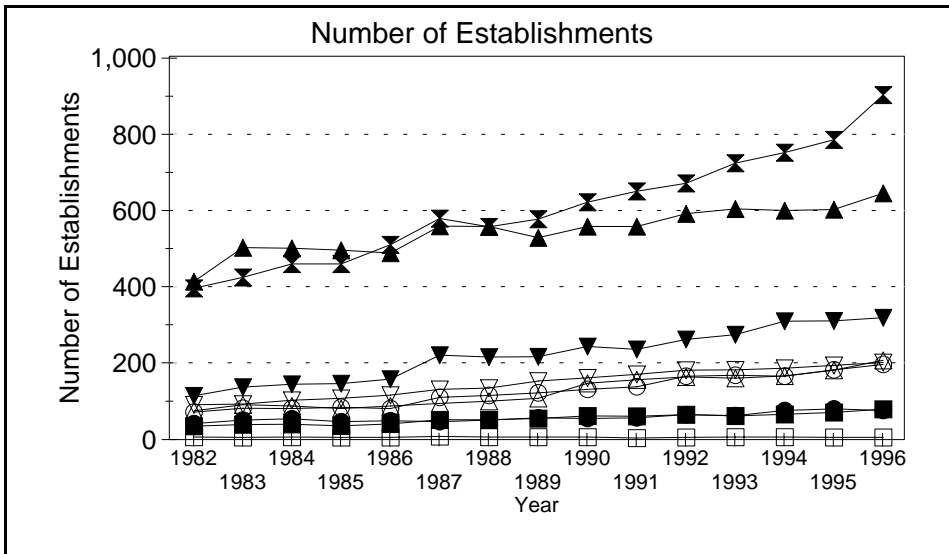
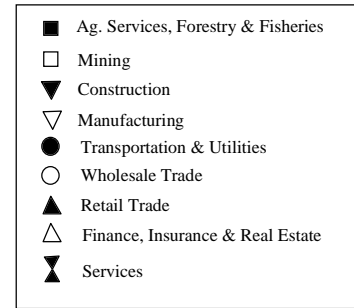
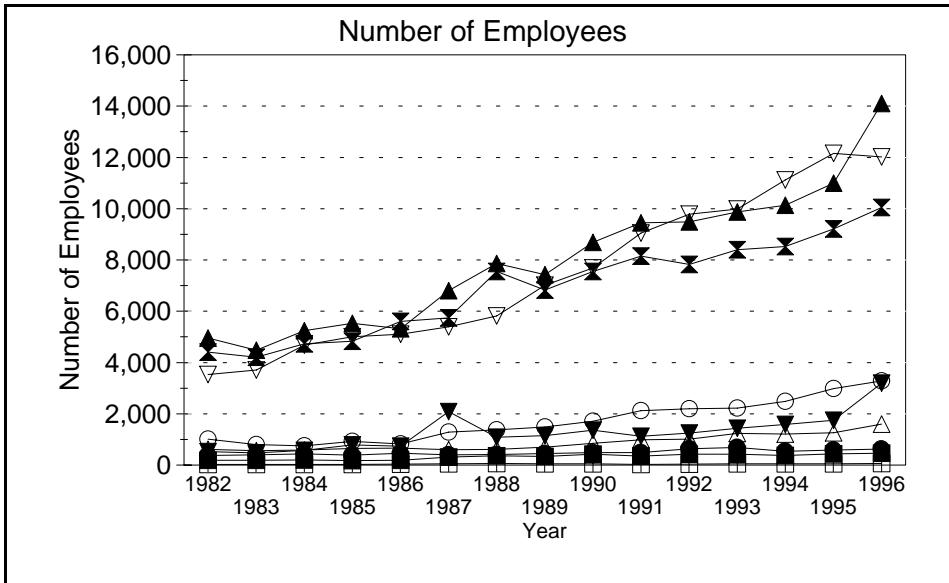


Business Statistics



Source: County Business Patterns, Ohio. These data are derived from all wage and salary employment covered by FICA which includes private non-farm employers and non-profit organizations, but does not include farms and the self employed.

Business Statistics

Number of Employees

Year	Ag. Services, Forestry, Fisheries*	Mining	Construction	Manufacturing	Transportation & Utilities	Wholesale Trade	Retail Trade	Finance, Insurance, Real Estate	Services	Not Classifiable	Total
1982	188	20	530	3,538	374	1,009	4,959	607	4,402	7	15,634
1983	192	21	474	3,702	396	794	4,479	563	4,206	106	14,933
1984	202	19	579	4,677	437	744	5,244	587	4,730	176	17,395
1985	180	27	783	5,001	389	919	5,530	643	4,827	281	18,580
1986	186	32	731	5,108	463	822	5,320	661	5,604	280	19,207
1987	308	46	2,079	5,391	403	1,289	6,800	595	5,745	17	22,673
1988	359	62	1,081	5,814	406	1,373	7,858	612	7,553	128	25,246
1989	340	45	1,144	7,019	453	1,485	7,432	701	6,824	205	25,648
1990	427	55	1,365	7,692	484	1,710	8,683	849	7,549	96	28,910
1991	350	26	1,125	9,051	481	2,120	9,448	984	8,148	27	31,760
1992	427	43	1,246	9,781	637	2,200	9,486	1,012	7,826	12	32,670
1993	422	49	1,437	9,982	688	2,225	9,867	1,232	8,404	13	34,319
1994	376	50	1,588	11,119	537	2,479	10,136	1,207	8,529	34	36,055
1995	432	51	1,742	12,158	581	2,979	10,993	1,263	9,205	32	39,436
1996	458	B	3,194	12,021	618	3,286	14,097	1,593	10,053	A	45,368

Number of Establishments

Year	Ag. Services, Forestry, Fisheries*	Mining	Construction	Manufacturing	Transportation & Utilities	Wholesale Trade	Retail Trade	Finance, Insurance, Real Estate	Services	Not Classifiable	Total
1982	35	7	114	91	42	72	412	75	395	14	1,257
1983	39	6	137	93	51	82	501	91	423	59	1,482
1984	40	7	144	103	54	81	499	88	458	113	1,587
1985	36	6	146	108	47	84	494	81	458	140	1,600
1986	41	6	158	116	49	81	487	88	508	129	1,663
1987	52	8	220	131	47	110	557	94	577	34	1,830
1988	52	7	215	134	51	115	556	100	555	120	1,905
1989	55	7	216	153	57	122	527	108	575	116	1,936
1990	62	7	243	161	55	131	556	147	619	103	2,084
1991	61	4	235	170	57	138	556	156	648	47	2,072
1992	65	6	261	181	65	165	589	164	669	25	2,190
1993	62	7	274	182	63	168	602	160	721	21	2,260
1994	66	7	309	186	76	165	598	166	749	26	2,348
1995	71	6	310	194	80	182	600	181	782	16	2,422
1996	79	6	318	201	76	196	643	207	899	3	2,628

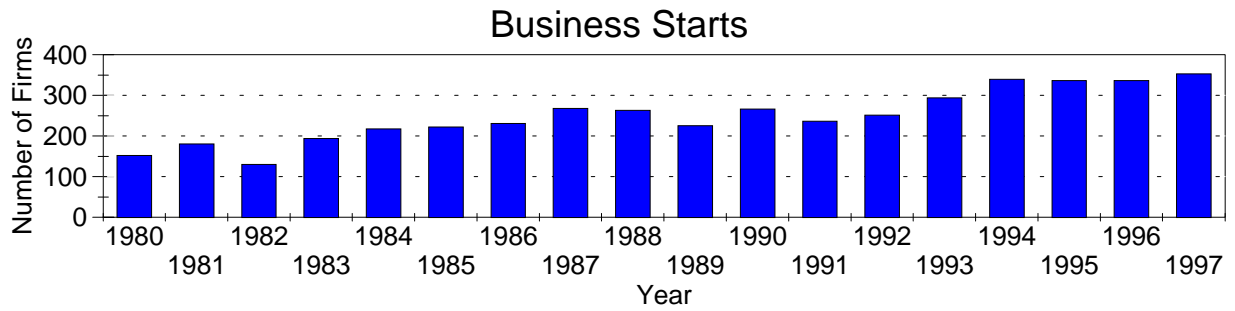
Annual Payroll (Thousands of Dollars)

Year	Ag. Services, Forestry, Fisheries*	Mining	Construction	Manufacturing	Transportation & Utilities	Wholesale Trade	Retail Trade	Finance, Insurance, Real Estate	Services	Not Classifiable	Total
1982	2,510	422	7,348	59,769	7,134	17,710	39,066	6,983	50,622	167	191,731
1983	2,617	638	6,964	74,235	8,168	13,597	40,289	7,949	43,302	1,248	209,008
1984	2,871	929	9,634	97,093	9,500	14,182	46,346	8,171	55,749	1,777	246,253
1985	3,010	820	11,099	96,080	8,723	19,043	47,693	9,062	67,516	3,126	266,173
1986	3,354	698	13,945	115,271	9,258	16,844	50,147	9,385	72,981	6,411	298,294
1987	4,659	908	47,034	115,131	9,093	33,320	65,950	11,303	77,761	416	365,575
1988	4,796	1,580	20,540	129,903	9,854	38,275	71,447	11,992	88,026	3,074	379,487
1989	5,045	1,672	21,535	182,176	11,447	45,670	75,466	13,595	97,051	4,486	458,143
1990	5,819	1,678	24,485	192,533	12,617	54,341	92,442	17,513	110,022	1,261	512,711
1991	5,288	942	24,581	242,396	13,228	59,698	106,093	22,269	123,143	1,987	599,625
1992	6,494	1,329	30,765	270,266	17,557	68,672	111,118	25,554	134,186	374	666,315
1993	6,753	1,499	34,466	279,192	17,189	72,162	123,336	23,631	136,908	232	695,368
1994	7,201	1,872	38,575	320,729	16,250	75,148	132,106	25,091	161,103	498	778,573
1995	8,276	1,844	41,484	347,010	18,315	93,557	147,172	28,343	171,711	175	857,887
1996	9,039	D	103,441	373,739	19,666	102,851	208,904	43,429	211,641	D	1,074,804

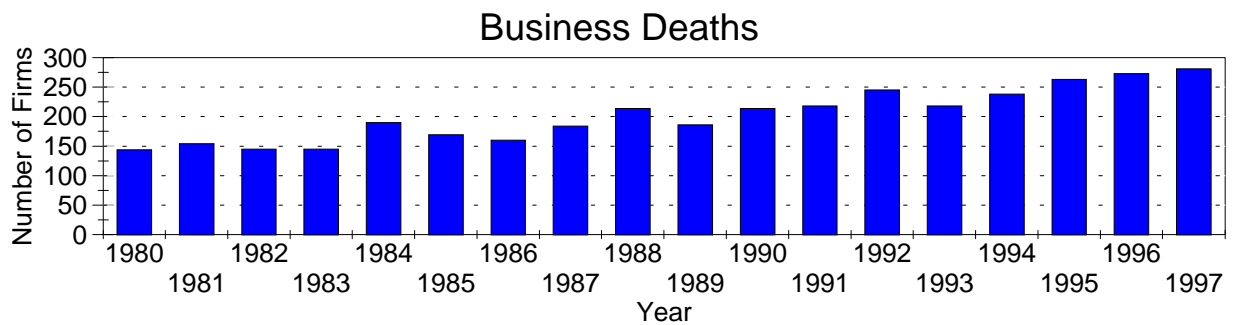
A=0-19, B=20-99, C=100-249, D=figures withheld, E=250-499,
 F=500-999, G=1,000-2,499, H=2,500-4,999, I=5,000-9,999,
 J=10,000-24,999, K=25,000-49,999, L=50,000-99,999, M=100,000 or more

*Ag. Services, Forestry & Fisheries include only non-farm businesses.

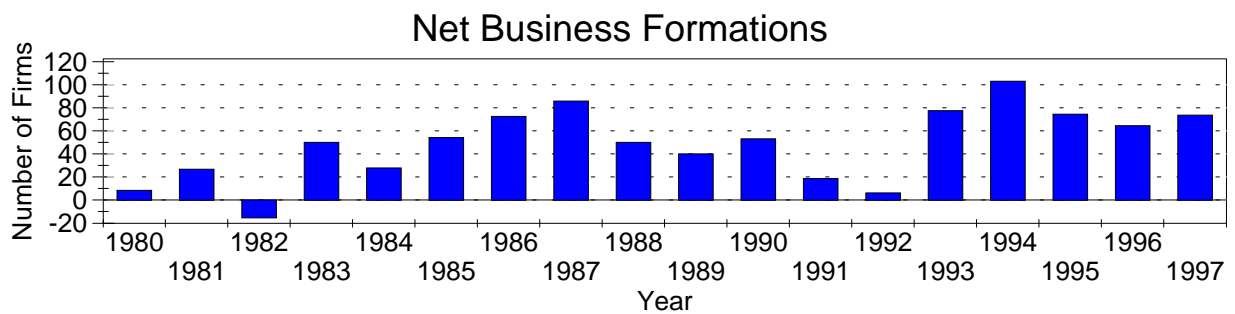
Business Statistics



Business starts and business deaths are determined from workers compensation records.



Business starts less business deaths equal net business formations.



Business Starts

Year	Number of Firms
1980	152
1981	180
1982	130
1983	194
1984	217
1985	222
1986	231
1987	268
1988	263
1989	225
1990	266
1991	236
1992	251
1993	294
1994	339
1995	336
1996	336
1997	353

Business Deaths

Year	Number of Firms
1980	144
1981	154
1982	145
1983	145
1984	190
1985	169
1986	160
1987	184
1988	214
1989	186
1990	214
1991	218
1992	245
1993	218
1994	238
1995	263
1996	273
1997	281

Net Business Formations

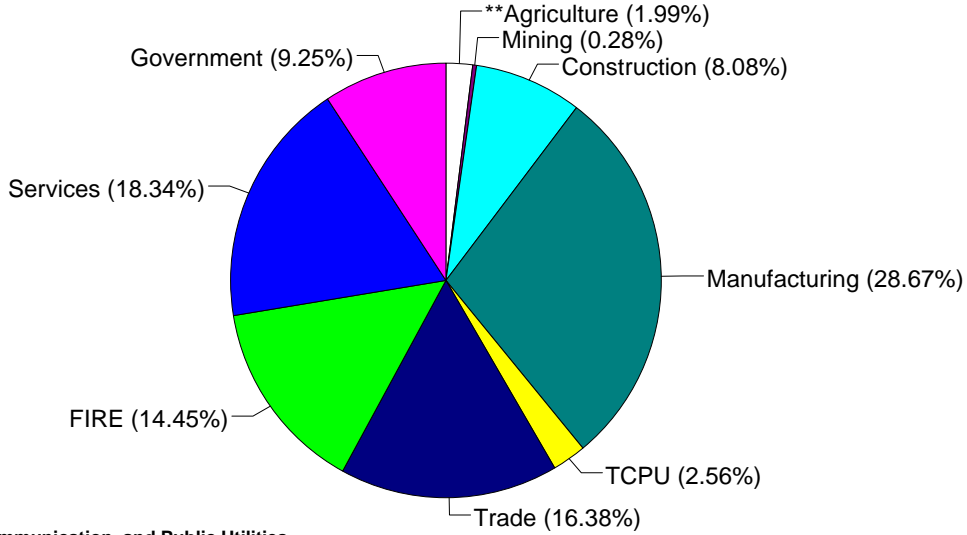
Year	Number of Firms
1980	8
1981	26
1982	-15
1983	49
1984	27
1985	53
1986	71
1987	84
1988	49
1989	39
1990	52
1991	18
1992	6
1993	76
1994	101
1995	73
1996	63
1997	72

Source: Components of Business Change, Ohio Department of Development, Office of Strategic Research

Economic Structure

Total Value Added:
\$1,747.18 million.

Value Added by Sector (1993)*



Value Added is a broad measure of income that includes employee compensations, business profits, and returns to property, plant, and equipment.

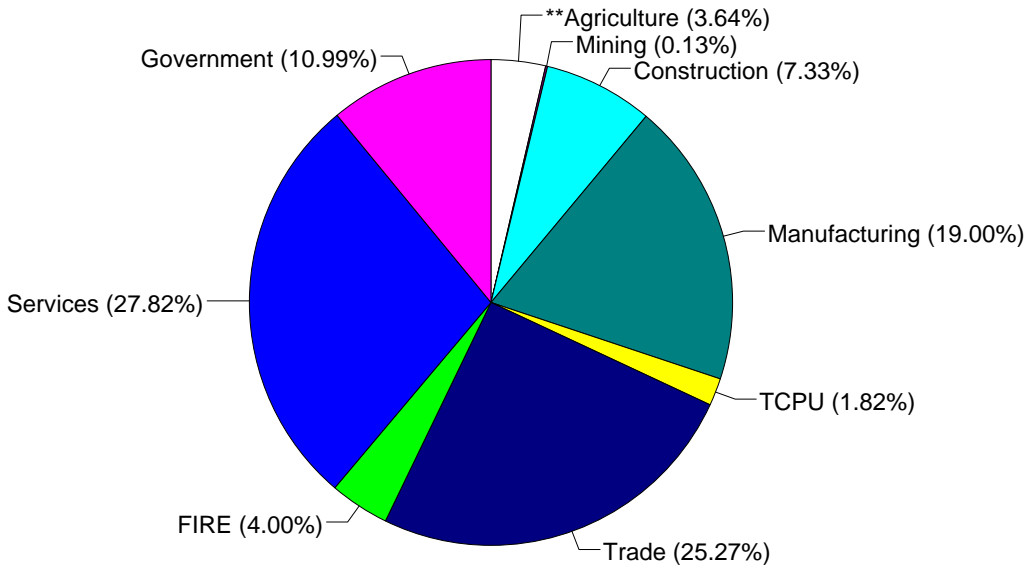
TCPU=Transportation, Communication, and Public Utilities.
FIRE=Finance, Insurance, and Real Estate.

*These estimates include many components not reported in other sources such as farms, self-employed, and small firms.

**Agriculture/Fishing/Forestry sector includes production agriculture (farm), agricultural services, forestry, and fishing enterprises.

Total Employment:
49,185 workers.

1993 Employment by Sector*



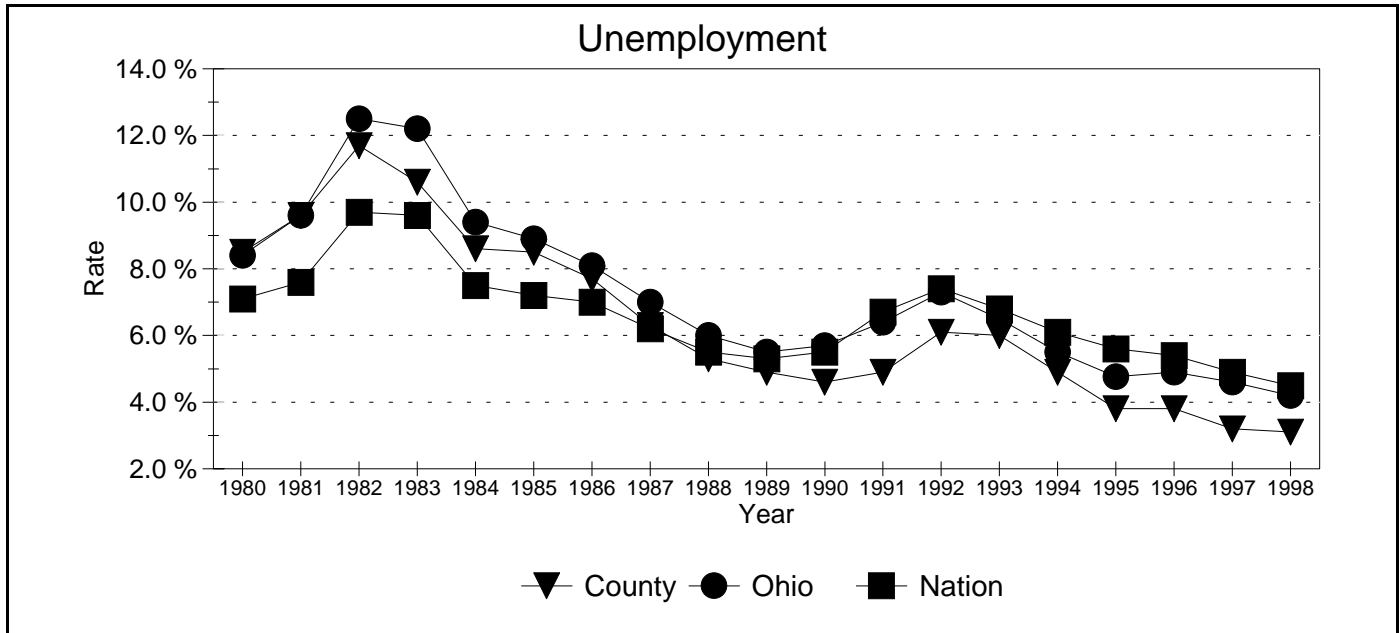
TCPU=Transportation, Communication, and Public Utilities.
FIRE=Finance, Insurance, and Real Estate.

*These estimates include many components not reported in other sources such as farms, self-employed, and small firms.

**Agriculture/Fishing/Forestry sector includes production agriculture (farm), agricultural services, forestry, and fishing enterprises.

Source: 1993 IMPLAN database, Minnesota Implan Group. IMPLAN is a non-survey regional input-output account generator originally developed by the U.S. Forest Service. These estimates provide a full picture of the county's economy.

Unemployment Statistics



Source: Bureau of Labor Statistics

Commuting Statistics

Residents retained in Warren County: 19,789.

Residents of Neighboring Counties Working in Warren County, 1990

County of Residence	Number of Incommuters
Butler	6,213
Hamilton	3,798
Montgomery	2,441
Clermont	1,346
Clinton	693
Greene	413
Kenton (KY)	263

Residents of Warren County Working in Neighboring Counties, 1990

County of Work	Number of Outcommuters
Hamilton	14,858
Montgomery	9,955
Butler	6,068
Clermont	919
Clinton	632
Greene	539
Campbell (KY)	166

Source: U.S. Census Bureau, 1990 Census Summary Tape File S-5.