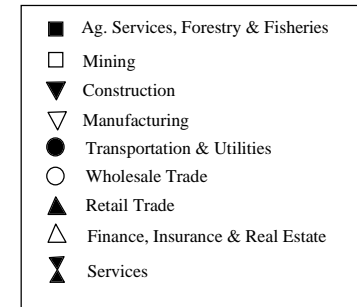
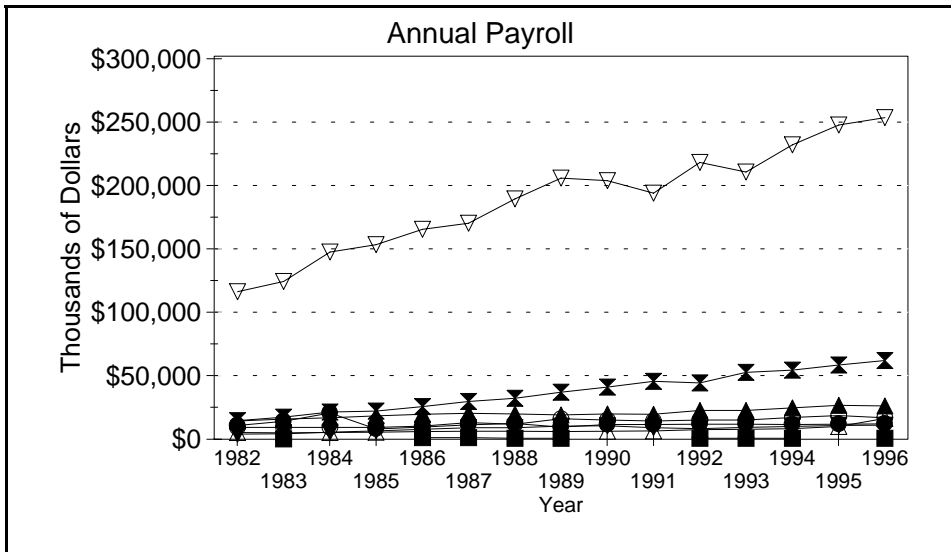
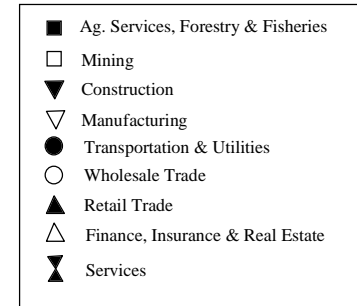
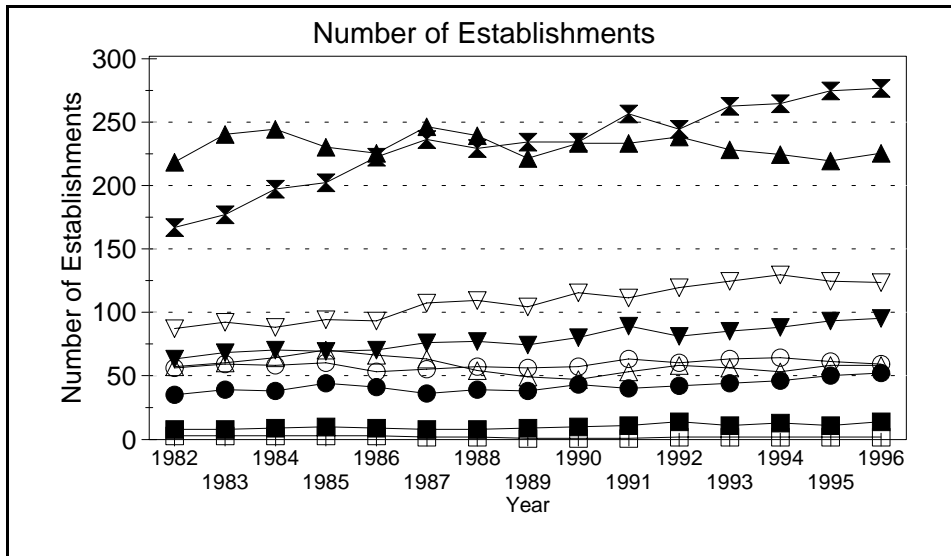
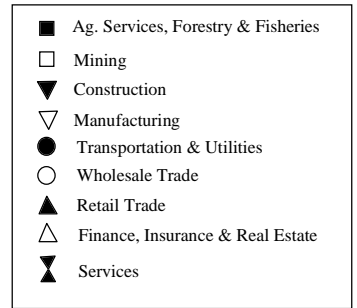
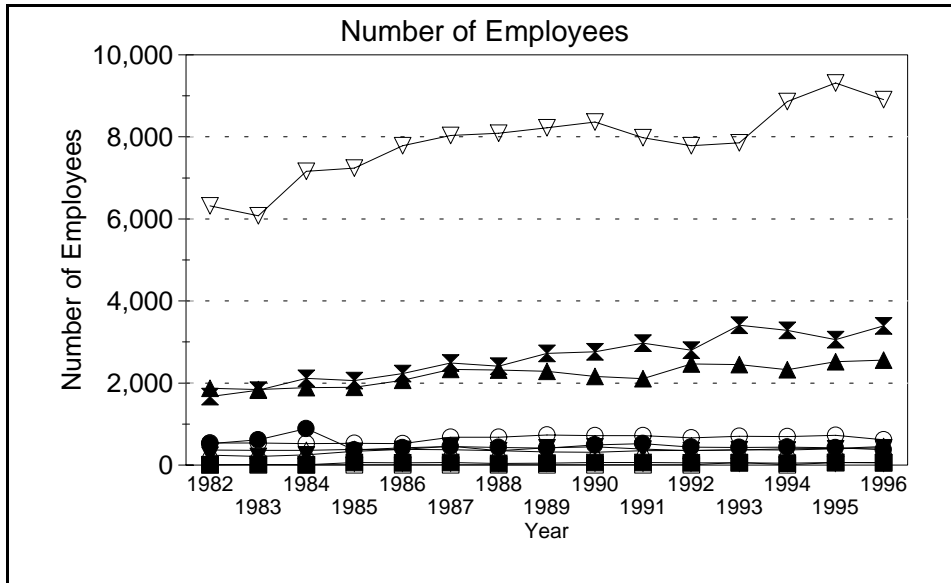


Business Statistics



Source: County Business Patterns, Ohio. These data are derived from all wage and salary employment covered by FICA which includes private non-farm employers and non-profit organizations, but does not include farms and the self employed.

Business Statistics

Number of Employees

Year	Ag. Services, Forestry, Fisheries*	Mining	Construction	Manufacturing	Transportation & Utilities	Wholesale Trade	Retail Trade	Finance, Insurance, Real Estate	Services	Not Classifiable	Total
1982	A	A	244	6,319	526	539	1,869	365	1,673	1	11,565
1983	19	A	207	6,076	617	537	1,844	355	1,822	B	11,513
1984	A	A	247	7,163	890	522	1,889	357	2,111	69	13,281
1985	B	A	336	7,238	367	532	1,897	386	2,060	117	12,970
1986	56	A	384	7,781	418	526	2,067	385	2,230	B	13,960
1987	62	A	463	8,031	455	681	2,330	377	2,489	A	14,906
1988	37	A	352	8,091	429	682	2,317	352	2,414	B	14,720
1989	44	A	421	8,224	412	732	2,289	319	2,726	B	15,242
1990	B	A	444	8,359	488	719	2,164	312	2,761	25	15,315
1991	B	A	389	7,981	520	720	2,106	350	2,973	23	15,113
1992	52	A	354	7,788	436	662	2,463	360	2,800	A	14,936
1993	51	B	371	7,856	429	699	2,453	365	3,407	A	15,669
1994	50	A	366	8,864	435	693	2,328	397	3,282	A	16,451
1995	B	B	400	9,312	423	729	2,516	406	3,058	7	16,919
1996	55	B	423	8,910	373	614	2,558	453	3,391	A	16,803

Number of Establishments

Year	Ag. Services, Forestry, Fisheries*	Mining	Construction	Manufacturing	Transportation & Utilities	Wholesale Trade	Retail Trade	Finance, Insurance, Real Estate	Services	Not Classifiable	Total
1982	8	3	63	87	35	56	217	57	166	6	698
1983	8	3	68	92	39	59	239	60	176	32	776
1984	9	3	70	88	38	58	243	64	196	55	824
1985	10	3	69	94	44	60	229	70	201	69	849
1986	9	3	70	93	41	53	224	66	221	56	836
1987	8	2	76	107	36	55	245	63	235	17	844
1988	8	2	77	109	39	57	238	54	228	34	846
1989	9	1	74	104	38	56	220	49	233	37	821
1990	10	1	80	115	43	57	232	47	233	33	851
1991	11	1	89	111	40	63	232	53	255	21	876
1992	14	2	81	119	42	60	237	58	243	8	864
1993	11	2	85	124	44	63	227	56	261	8	881
1994	13	2	88	129	46	64	223	53	263	11	892
1995	11	2	93	124	50	61	218	58	273	10	900
1996	14	2	95	123	52	59	224	58	275	3	905

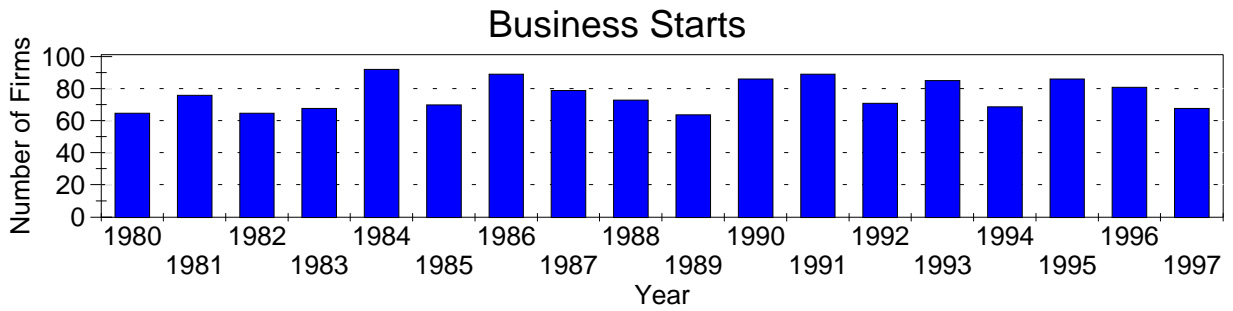
Annual Payroll (Thousands of Dollars)

Year	Ag. Services, Forestry, Fisheries*	Mining	Construction	Manufacturing	Transportation & Utilities	Wholesale Trade	Retail Trade	Finance, Insurance, Real Estate	Services	Not Classifiable	Total
1982	D	D	4,019	115,545	10,717	9,326	14,195	5,263	14,528	93	174,288
1983	221	D	4,259	123,536	13,939	9,246	15,747	5,050	17,292	D	190,045
1984	D	D	5,445	146,546	20,652	9,155	16,695	5,249	21,279	656	226,260
1985	D	D	6,623	152,269	7,998	9,169	18,229	5,639	22,176	1,199	223,996
1986	1,233	D	7,678	164,390	9,553	10,339	19,544	6,015	25,521	D	245,834
1987	1,372	D	8,937	169,074	11,301	13,145	20,323	6,350	29,534	D	260,431
1988	743	D	9,070	188,122	12,384	11,872	19,880	6,306	32,189	D	281,791
1989	783	D	10,158	204,513	9,575	15,932	19,058	5,989	36,948	D	304,214
1990	D	D	10,634	202,588	11,511	15,011	19,769	6,283	40,837	779	308,393
1991	D	D	9,037	192,809	11,613	14,315	19,597	6,531	45,475	1,777	302,239
1992	714	D	8,284	216,678	11,871	15,036	22,492	7,505	44,003	D	327,182
1993	636	D	9,223	209,354	11,723	15,080	22,642	7,657	52,315	D	329,401
1994	697	D	10,120	230,678	11,636	17,068	24,526	8,177	54,026	D	357,869
1995	D	D	10,689	246,161	11,720	18,479	26,555	9,937	58,105	73	383,017
1996	760	D	11,127	252,004	11,942	16,716	26,135	16,170	61,614	D	397,109

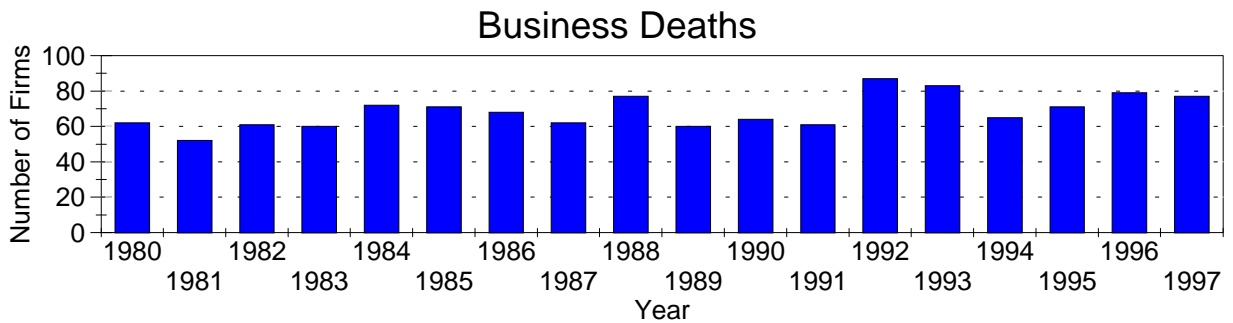
A=0-19, B=20-99, C=100-249, D=figures withheld, E=250-499,
 F=500-999, G=1,000-2,499, H=2,500-4,999, I=5,000-9,999,
 J=10,000-24,999, K=25,000-49,999, L=50,000-99,999, M=100,000 or more

*Ag. Services, Forestry & Fisheries include only non-farm businesses.

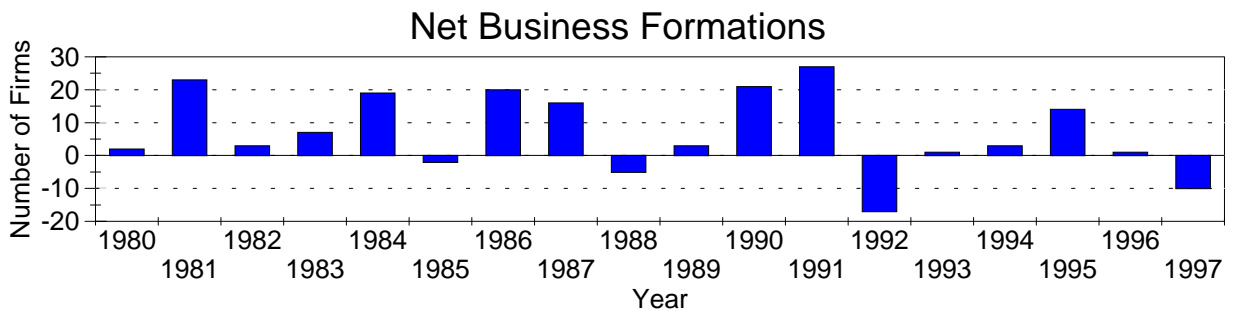
Business Statistics



Business starts and business deaths are determined from workers compensation records.



Business starts less business deaths equal net business formations.



Business Starts

Year	Number of Firms
1980	64
1981	75
1982	64
1983	67
1984	91
1985	69
1986	88
1987	78
1988	72
1989	63
1990	85
1991	88
1992	70
1993	84
1994	68
1995	85
1996	80
1997	67

Business Deaths

Year	Number of Firms
1980	62
1981	52
1982	61
1983	60
1984	72
1985	71
1986	68
1987	62
1988	77
1989	60
1990	64
1991	61
1992	87
1993	83
1994	65
1995	71
1996	79
1997	77

Net Business Formations

Year	Number of Firms
1980	2
1981	23
1982	3
1983	7
1984	19
1985	-2
1986	20
1987	16
1988	-5
1989	3
1990	21
1991	27
1992	-17
1993	1
1994	3
1995	14
1996	1
1997	-10

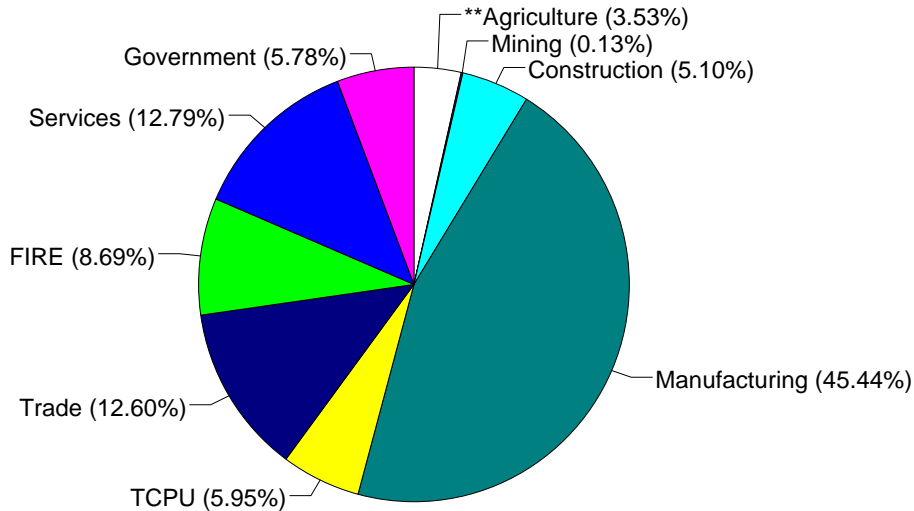
Source: Components of Business Change, Ohio Department of Development, Office of Strategic Research

Economic Structure

Total Value Added:
\$939.97 million.

Value Added by Sector (1993)*

Value Added is a broad measure of income that includes employee compensations, business profits, and returns to property, plant, and equipment.



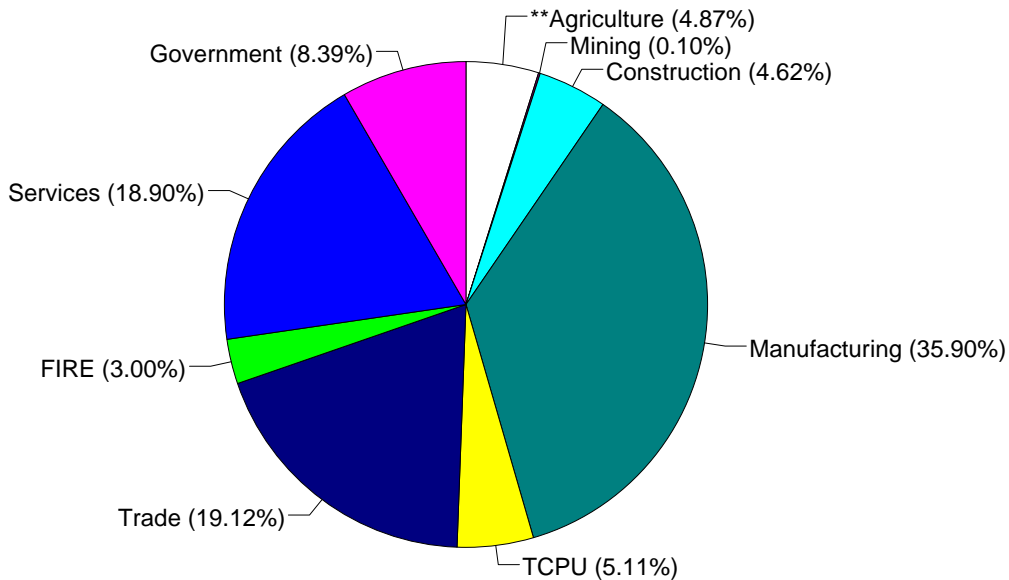
TCPU=Transportation, Communication, and Public Utilities.
FIRE=Finance, Insurance, and Real Estate.

*These estimates include many components not reported in other sources such as farms, self-employed, and small firms.

**Agriculture/Fishing/Forestry sector includes production agriculture (farm), agricultural services, forestry, and fishing enterprises.

Total Employment:
24,530 workers.

1993 Employment by Sector*



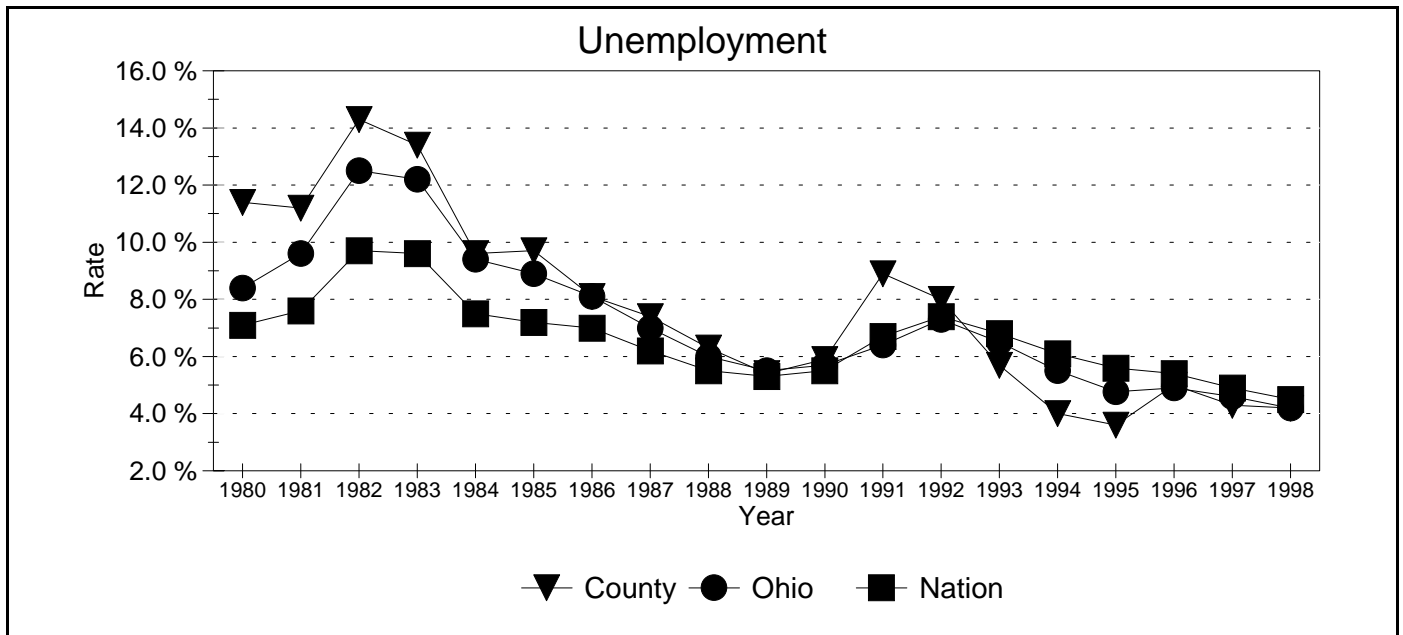
TCPU=Transportation, Communication, and Public Utilities.
FIRE=Finance, Insurance, and Real Estate.

*These estimates include many components not reported in other sources such as farms, self-employed, and small firms.

**Agriculture/Fishing/Forestry sector includes production agriculture (farm), agricultural services, forestry, and fishing enterprises.

Source: 1993 IMPLAN database, Minnesota Implan Group. IMPLAN is a non-survey regional input-output account generator originally developed by the U.S. Forest Service. These estimates provide a full picture of the county's economy.

Unemployment Statistics



Source: Bureau of Labor Statistics

Commuting Statistics

Residents retained in Williams County: 14,409.

Residents of Neighboring Counties Working in Williams County, 1990

County of Residence	Number of Incommuters
Defiance	1,699
Fulton	535
Hillsdale (MI)	511
Paulding	239
Henry	191
De Kalb (IN)	116
Lucas	103

Residents of Williams County Working in Neighboring Counties, 1990

County of Work	Number of Outcommuters
Fulton	1,253
Defiance	563
Steuben (IN)	445
De Kalb (IN)	349
Hillsdale (MI)	155
Henry	122
Lucas	107

Source: U.S. Census Bureau, 1990 Census Summary Tape File S-5.