



HORT SHORTS

July-August, 2000



OSU Extension
Lucas County
One Government Center,
Suite 550
Toledo, OH 43604

PHONE: 419-213-4254
OR 419-243-MOTH

FAX: 419-213-4241

CHECK OUT THESE FEATURES:

Hort Shorts Plant of the Month

Hort Shorts for Seedlings

Hort Shorts Pesky Pests

Hort Shorts Website of the Month

The Ohio State University,
The United States
Department of Agriculture,
and
Lucas County
Commissioners Cooperating
Sandy Isenberg, President
Bill Copeland
Harry Barlos

Urban & Consumer Program
Funded by:
City of Maumee
City of Sylvania
City of Toledo
Springfield Township
Sylvania Township
Village of Holland
Village of Ottawa Hills
Lucas County

Amy Stone, Extension Agent
Urban & Consumer
Horticulture



Syringa reticulata
Japanese Tree Lilac

PLANT OF THE MONTH:

Japanese Tree Lilac (*Syringa reticulata*)

The June blooms of the Japanese tree lilac bring the lilac season to a brilliant close. This small, vase-shaped tree has a refined beauty that is rare among trees. The form is graceful with and without leaves, and the show cream-colored flowers smell like honey. The glossy, reddish-brown bark is similar to cherry bark. Japanese tree lilac has little fall color, but the seed heads persist into winter and compliment the branching pattern and bark.

This hardy tree grows slowly and may reach 25' high and 15' wide in 30 years. Japanese tree lilacs can be grown as single-stemmed or multi-stemmed trees. The single-stem form makes an excellent small shade or street tree. The multi-stemmed form can be a fine focal point in larger areas. "Ivory Silk" is similar to the species except the crown form is more narrow. This lilac resists powdery mildew, scale, and borers.

DAY TRIPPIN'

Whether you have a few hours, or a few days, there is a lot to see in the "State Up North". I had the privilege of touring for 3 days numerous gardens, arboretums, and garden centers in Michigan with a group of OSU Extension Master Gardeners a couple of years ago.

We toured **Cranbrook Gardens**; **Matthaei Botanical Gardens**, **Cooley Gardens**; and **MSU – the 4-H Garden**, the **Annual and Perennial Demonstration Gardens**, the **Beal Botanical Gardens**, the **Botany Greenhouse and Butterfly House**, and the **Clarence E Lewis Landscape Arboretum**. We also stopped at **Bordine's Nursery and Gardening Center**, **Saguaro Rare Plant Nursery**, and the **Lansing City Market**.

Cranbrook Gardens, just outside of Detroit, has formal gardens and terraces enhanced by sculptures, fountains, and architectural fragments. Beyond the fieldstone surrounding the home, there were spacious lawns, specimen trees and a large lake.

The campus of **MSU** is absolutely wonderful. The five gardens are well taken care of and managed. A highlight for me was walking through the 4-H Children's Garden. The garden, although designed with children in mind, is a plant wonderland for the young and old. The pizza garden, secret garden, ABC garden, and the maze all stick out in my mind.

We took a leisurely walk through **Cooley Gardens**. The roses had just begun to bloom, but their scent filled the path leading into the gardens. Rows of peonies in the formal garden were in peak bloom for the group to take pictures.

We stopped at a rare plant nursery. The bus was filling up with gardeners' goodies. Succulents, annuals, perennials, ornamental grasses, bamboo, trees, shrubs, and hostas seemed to be big sellers. There was even a butterfly house for customers to enjoy.

Our final stop was **Matthaei Botanical Gardens**, (part of University of Michigan) just a short way up US-23. We toured the woodland wildflower area, their formal gardens, and gift shop. We saw first hand severe deer damage on yews

This publication is provided to assist you in receiving the horticultural information necessary to enhance the quality of life for you and your family. If you have any additions or deletions to our mailing list – please call Amy Stone or Barbara Northrup at 243-MOTH (6684). Visit our website at <http://www.ag.ohio-state.edu/>

HORT SHORTS GYPSY MOTH UPDATE

The phone continues to ring with residents reporting gypsy moths in their landscapes and neighborhoods. As you read this, caterpillars have begun to pupate and will be in this resting stage for 10-14 days. Adult moths will then emerge and mate. Once the egg masses have been laid, we will then do a preliminary egg-mass survey. This will give us an idea of where the high populations will be in 2001, and what areas may qualify for the Ohio Department of Agriculture (ODA) Suppression Program next season.

We have distributed *Entomophaga maimaiga* to those residents who were on a waiting list, and have attempted to be sure that the "new areas" have been inoculated with the fungus. With recent rains, we have also been receiving numerous phone calls that individuals are noticing fungus-killed caterpillars in their landscapes.

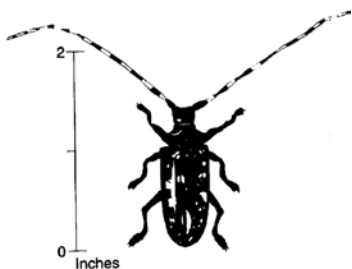
**HORT SHORTS FOR SEEDLINGS:
ASIAN LONG-HORNED BEETLE**

A long-horned beetle has recently been discovered attacking trees in Brooklyn and Amityville, NY. It's scientific name is *Anoplophora glabripennis* and this is the first time it has been seen infesting trees in the United States. This insect is native to Japan, Korea, and southern China where it kills trees.

In New York, the beetle has been attacking maple (*Acer*) species, including Norway, red, sugar, silver, boxelder, and sycamore maple. Horsechestnut (*Aesculus*) trees have also been heavily attacked. In China, it attacks other hardwoods including elms, poplars, willows, and fruit trees. In the United States it is important to limit spread because it may become a significant tree pest here.

WHAT TO LOOK FOR. . .

- ◆ Adult beetles have 1-1 1/4" long bodies with 2" long antennae. Their bodies are black with white spots, and their antennae are black and white.
- ◆ Large (1/2") round holes on the branches, trunk, or roots are places where the beetles exit the trees.
- ◆ Where females chew out a spot to lay their eggs, you may see oval, darkened places in the bark.



If you think you see this pest, contact the Extension Office Immediately!!!

COMING NEXT ISSUE:

- Landscaping to Attract Birds**
- The Heritage Oak
- Oak Wilt**
- Gypsy Moth Update
- Gourds, Gourds, and More Gourds**



HORT SHORTS PESKY PESTS

White Grubs in Turfgrass

White grubs are perennial pests of the cool-season and transition zone turf grasses. May/June beetles, masked chafers and Japanese beetles are found in all areas of Ohio (and generally east of the Mississippi River). The European chafer, Asiatic garden beetle and Oriental beetle are more recent introductions to Ohio and these pests are commonly encountered in counties bordering Lake Erie. The green June beetle is a native pest that seems to be causing more damage in Ohio's southern counties. The black turfgrass *ataenius* can be found throughout the state where it is a perennial pest on golf courses.

White grubs eat organic matter including the roots of plants. Therefore, damage first appears to be drought stress. Heavily infested turf first appears off color, gray-green, and wilts rapidly in the hot sun. Continued feeding will cause the turf to die in large irregular patches. The tunneling of the larvae cause the turf to feel spongy under foot and the turf can often be rolled back like a loose carpet. Grub populations may not cause observable turf injury, but predatory mammals such as skunks, raccoons, opossums, and moles dig in the turf in search of a meal.

White grubs seem to be periodic pests, attacking turf areas irregularly from year to year. The major factor influencing development of damaging numbers of grubs is soil moisture and rainfall. In general, in years with normal or above normal rainfall, grub populations increase. Well maintained turf next to ornamental plants favored by the adults seem to be more commonly attacked.

If you have a grub problem and want to make an insecticide application, timing is the key. Research data indicates that June, July, and early August applications of MACH2 give excellent control of masked chafers and Japanese Beetle Grubs. For more information, call 243-MOTH and request Factsheet 2500. This factsheet is also available on the web at: <http://www.ag.ohio-state.edu/~ohioline/hyg->

HORT SHORTS WEBSITE OF THE MONTH:

Want more info on the Asian Longhorned beetle: <http://willow.ncfes.umn.edu/albpestalert/>